

Brazil Macroeconomic Analysis

Brazil - Industrial Production

Andrea Damico | Ariana Zerbinatti | Marcelo Alonso |
Gustavo Rostelato | Thaís Rodrigues

Brazil IP | Breakdown



Guide

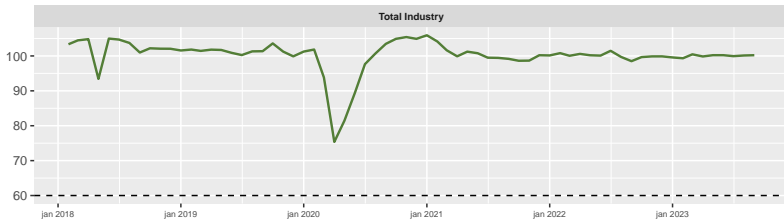
Index sa

Industrial Production - MoM (%)

Industrial Production - YoY (%)

Industrial Production

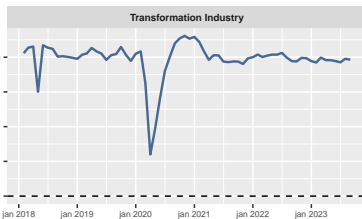
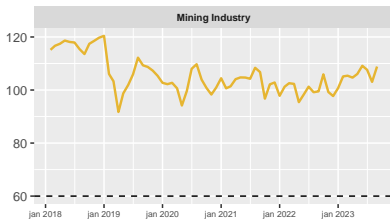
Index sa



Source: IBGE, BuysideBrazil

Industrial Production

Index sa

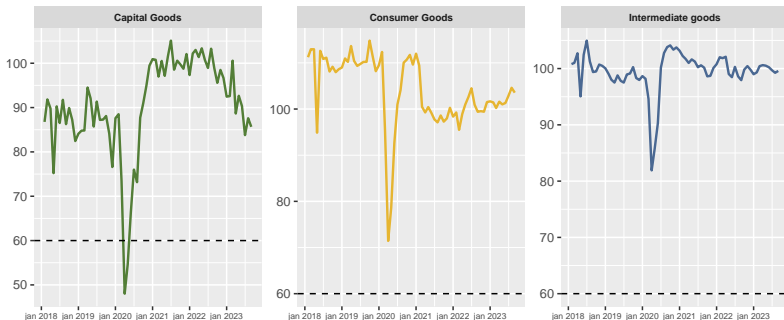


Source: IBGE, BuysideBrazil

Index sa - by categories

Industrial Production

Index sa

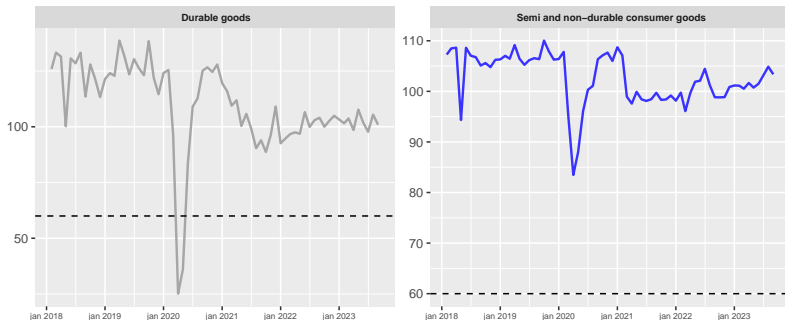


Source: IBGE, BuysideBrazil

Index sa - by categories

Industrial Production

Index sa



Source: IBGE, BuysideBrazil

Industrial Production - MoM (%)

Table 1: Industrial Production - MoM (%)

Month	Total Industry	Mining Industry	Transformation Industry
abr 2023	-0.6	-0.7	-0.7
mai 2023	0.4	1.3	0.0
jun 2023	0.0	2.9	-0.3
jul 2023	-0.3	-1.4	-0.4
ago 2023	0.2	-4.2	1.1
set 2023	0.1	5.6	-0.3

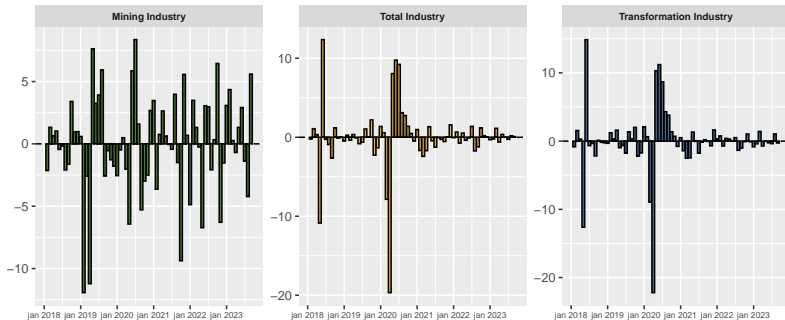
Table 2: Industrial Production - MoM (%)

Month	Capital goods	Intermediate goods	Consumer Goods	Durable goods	Semi and non-durable consumer goods
abr 2023	-11.9	0.2	1.4	-5.0	1.1
mai 2023	4.5	-0.1	-0.6	9.3	-0.9
jun 2023	-2.5	-0.3	0.3	-5.5	0.8
jul 2023	-7.3	-0.5	1.5	-3.9	1.6
ago 2023	4.5	-0.5	1.7	7.9	1.7
set 2023	-2.2	0.3	-1.0	-4.3	-1.4

Industrial Production (MoM%)

Industrial Production

MoM sa (%)



Source: IBGE, BuysideBrazil

Industrial Production - Categories (MoM%)

Industrial Production

MoM sa (%)

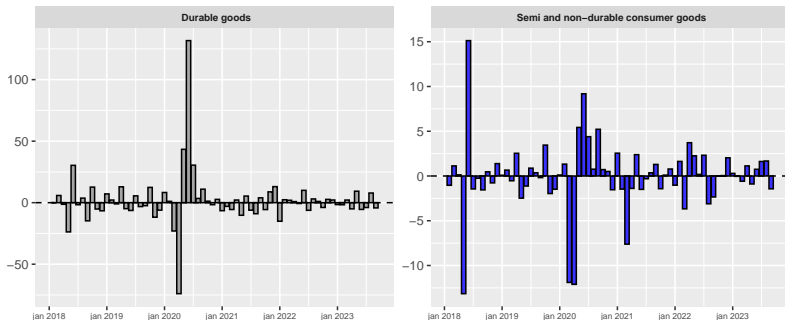


Source: IBGE, BuysideBrazil

Industrial Production - Categories (MoM%)

Industrial Production

MoM sa (%)



Source: IBGE, BuysideBrazil

Industrial Production - YoY (%)

Table 3: Industrial Production (YoY%)

Month	Total Industry	Mining Industry	Transformation Industry
abr 2023	-2.7	1.7	-3.5
mai 2023	1.9	12.0	0.3
jun 2023	0.2	10.9	-1.6
jul 2023	-1.2	7.0	-2.6
ago 2023	0.5	3.0	0.0
set 2023	0.6	9.1	-0.8

Table 4: Industrial Production - YoY (%)

Month	Capital goods	Intermediate goods	Consumer Goods	Durable Goods	Semi and non-durable consumer goods
abr 2023	-13.9	-2.9	-0.2	0.4	-0.3
mai 2023	-9.6	3.0	2.3	11.1	0.9
jun 2023	-9.9	1.8	-0.7	-4.0	-0.2
jul 2023	-15.6	-0.1	-0.8	-3.5	-0.5
ago 2023	-13.7	0.1	3.7	2.8	3.8
set 2023	-12.9	1.2	2.0	-3.0	2.8

