

IPCA

April, 2024

IPCA

	Weight	IPCA Mar-24	IPCA-15 Apr-24	IPCA Apr-24	Estimate	bps
IPCA (CPI)	100%	0,16%	0,21%	0,38%	0,32%	6
Food and beverages	21,4%	0,53%	0,61%	0,70%	0,59%	2
Food at home	15,6%	0,59%	0,74%	0,81%	0,70%	2
Fresh products	2,8%	2,50%	3,58%	3,66%	3,41%	1
Meat	2,4%	-0,94%	-1,43%	-0,97%	-1,20%	1
Milk and dairy	1,8%	0,74%	0,68%	0,94%	0,50%	1
Food away from home	5,8%	0,35%	0,25%	0,39%	0,32%	0
Housing	15,2%	0,19%	0,07%	-0,01%	0,04%	-1
Residential electricity	4,0%	0,12%	-0,07%	-0,46%	-0,20%	-1
Household furnishings and supplies	3,7%	-0,04%	0,03%	-0,26%	-0,04%	-1
Apparel	4,7%	0,03%	0,41%	0,55%	0,78%	-1
Transportation	20,6%	-0,33%	-0,49%	0,14%	-0,19%	7
Airfares	0,7%	-9,14%	-12,20%	-12,09%	-12,20%	0
Gasoline	5,0%	0,21%	-0,11%	1,50%	0,45%	5
Health and personal care	13,4%	0,43%	0,78%	1,16%	1,13%	0
Personal hygiene	4,0%	0,06%	0,29%	0,34%	0,00%	1
Personal expenses	10,1%	0,33%	0,40%	0,10%	0,16%	-1
Education	6,1%	0,14%	0,05%	0,05%	0,03%	0
Communication	4,8%	-0,13%	0,17%	0,48%	0,49%	0



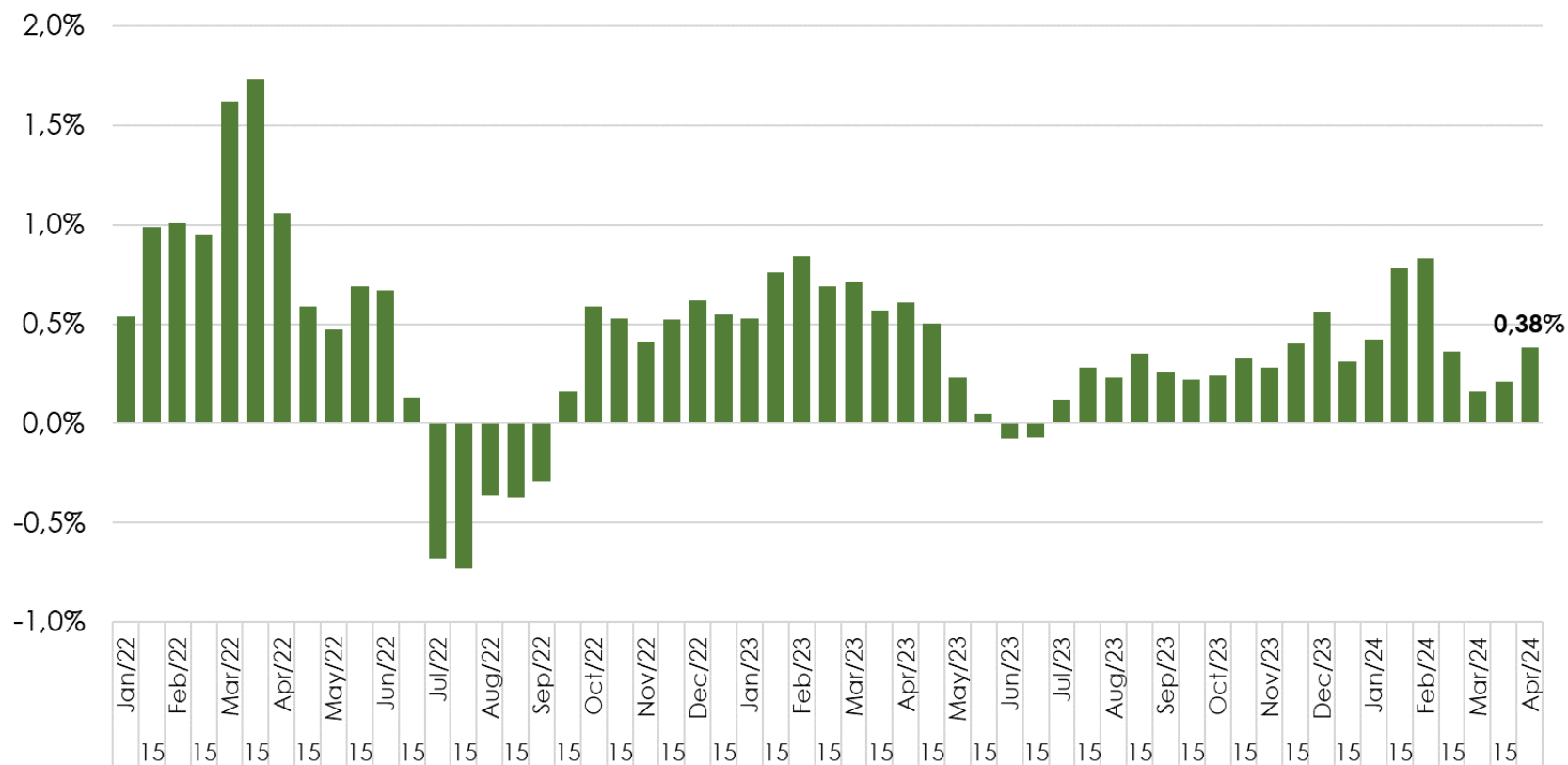
IPCA

	Weight	IPCA Mar-24	IPCA-15 Apr-24	IPCA Apr-24	Estimate	bps
IPCA (CPI)	100%	0,16%	0,21%	0,38%	0,32%	6
Free prices	73,7%	0,13%	0,19%	0,26%	0,22%	3
Administered prices	26,3%	0,25%	0,26%	0,73%	0,60%	3
Services	35,8%	0,10%	0,05%	0,06%	0,05%	0
Underlying services	21,1%	0,45%	0,38%	0,33%	0,29%	1
Industrial goods	23,3%	-0,14%	0,05%	0,21%	0,20%	0
Durable	9,7%	-0,32%	-0,12%	-0,14%	-0,15%	0
Semi-durable	6,1%	0,00%	0,22%	0,35%	0,62%	-2
Non-durable	22,1%	0,41%	0,57%	0,73%	0,57%	3
Core average	-	0,15%	0,19%	0,26%	0,24%	
EX0	59,0%	0,01%	0,06%	0,12%	0,10%	1
EX3	36,9%	0,21%	0,29%	0,26%	0,25%	0
MS	-	0,24%	0,29%	0,30%	0,25%	
DP	-	0,16%	0,22%	0,31%	0,28%	
P55	-	0,15%	0,10%	0,34%	0,32%	

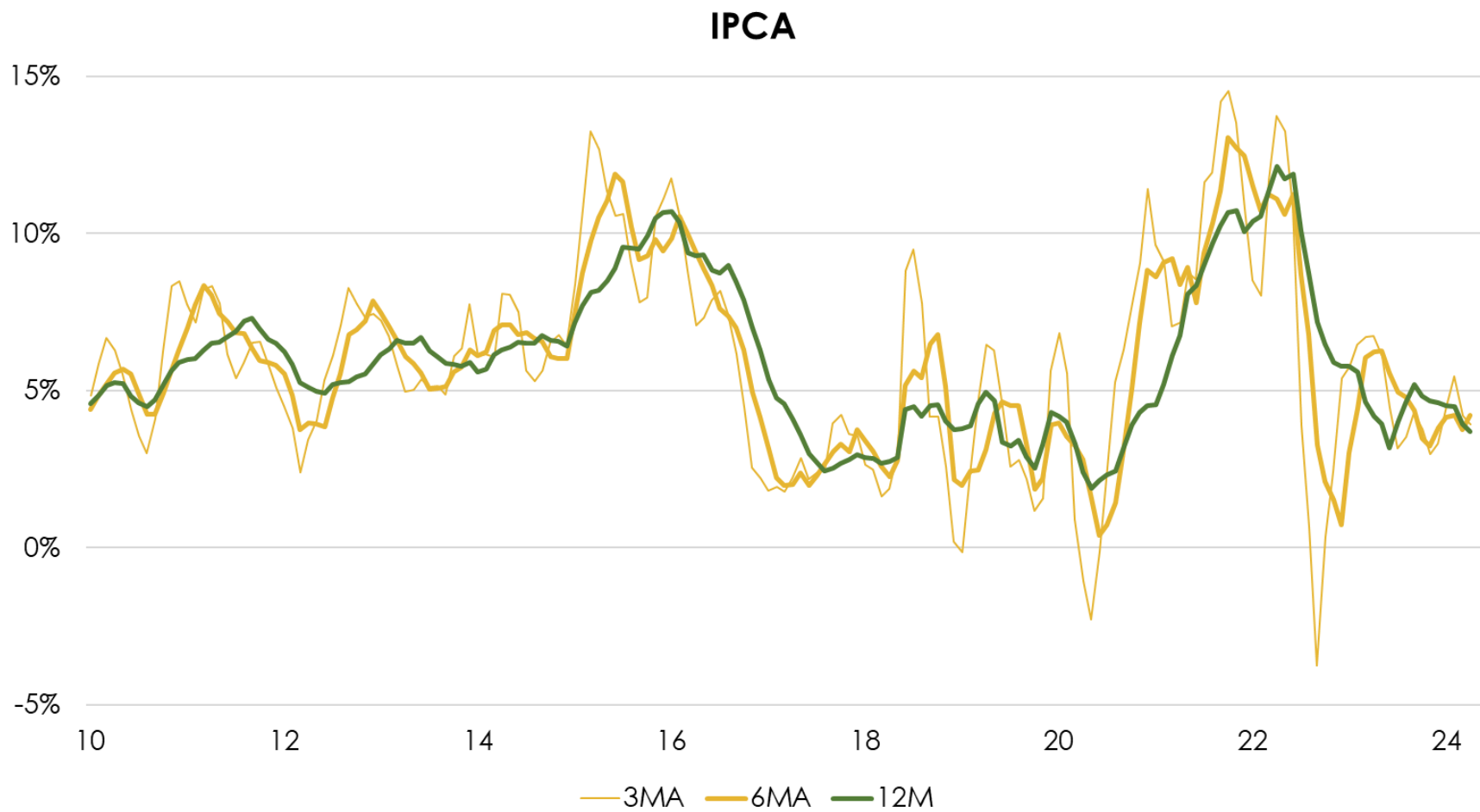


IPCA

IPCA (MoM)

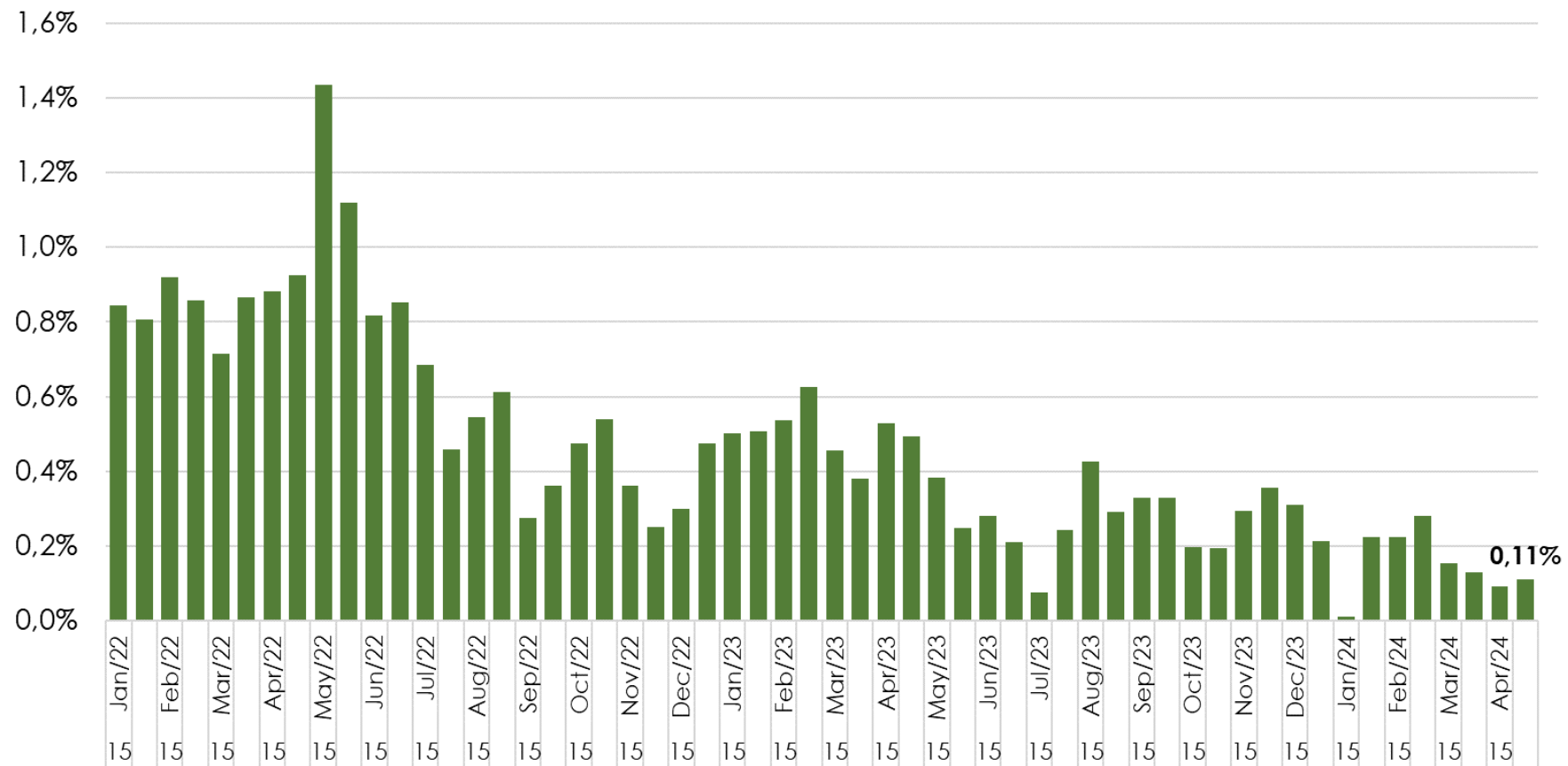


IPCA



EX0 Core

EX0 (MoM SA)

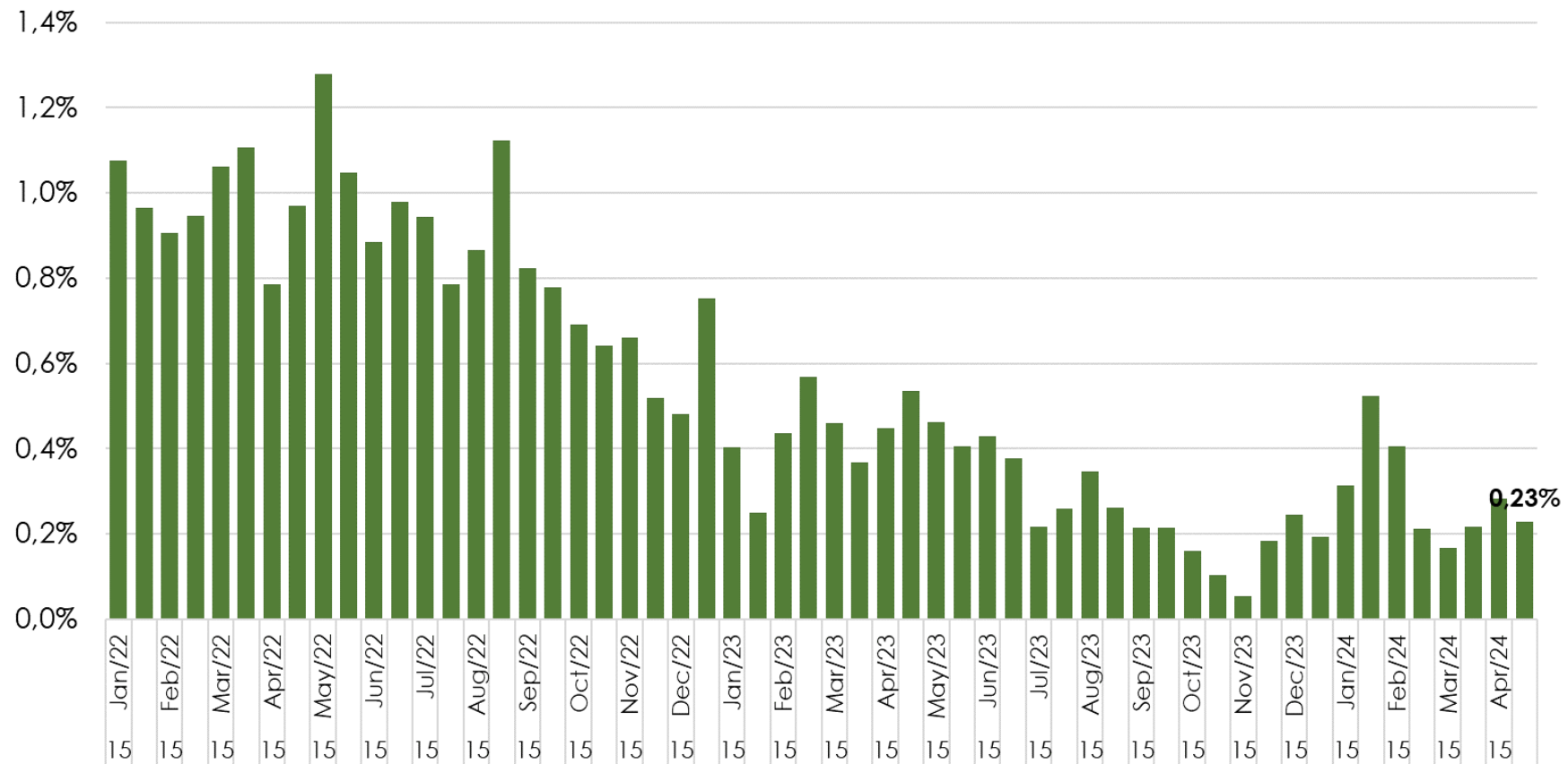


EX0 Core



EX3 Core

EX3 (MoM SA)

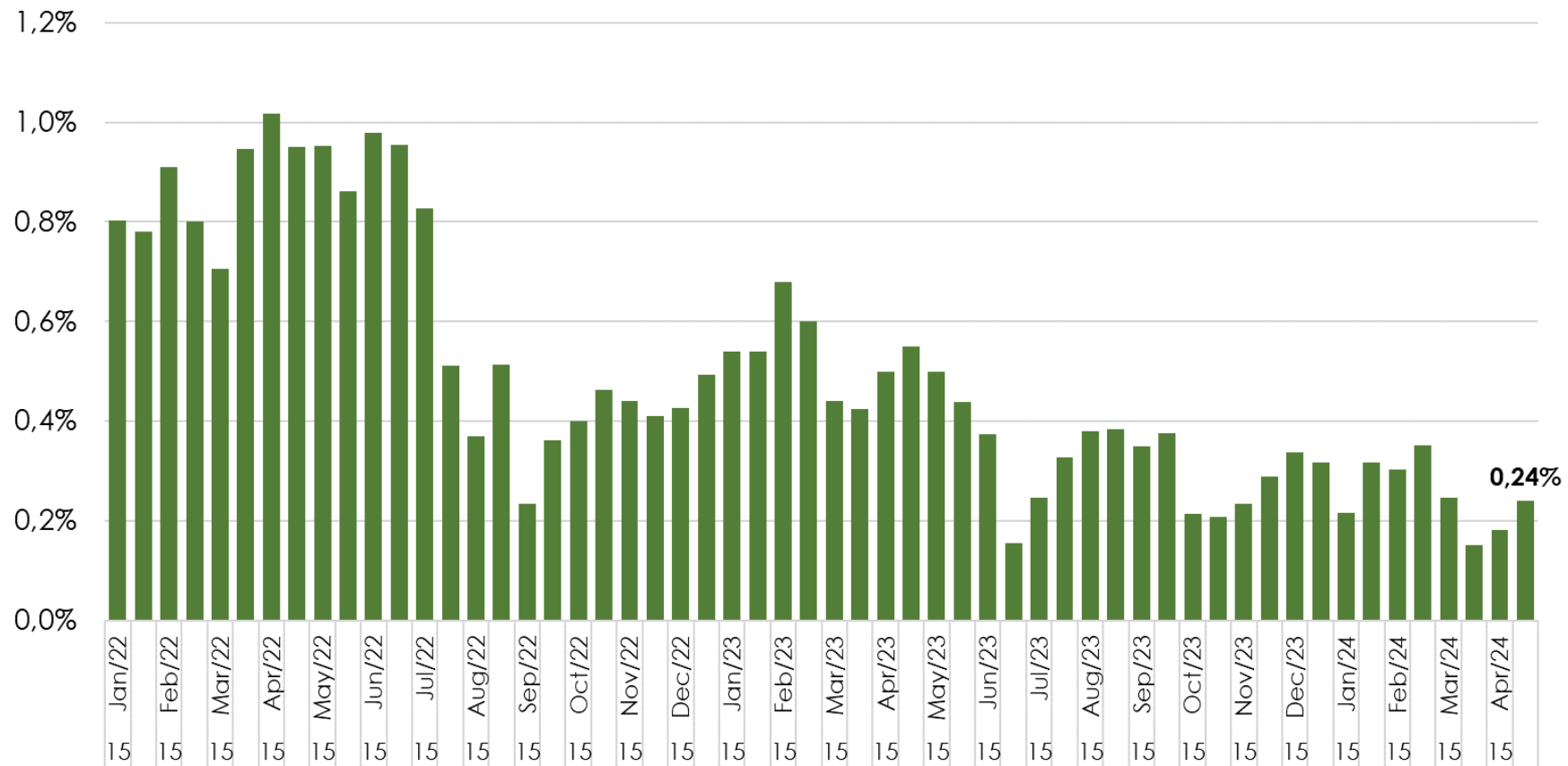


EX3 Core

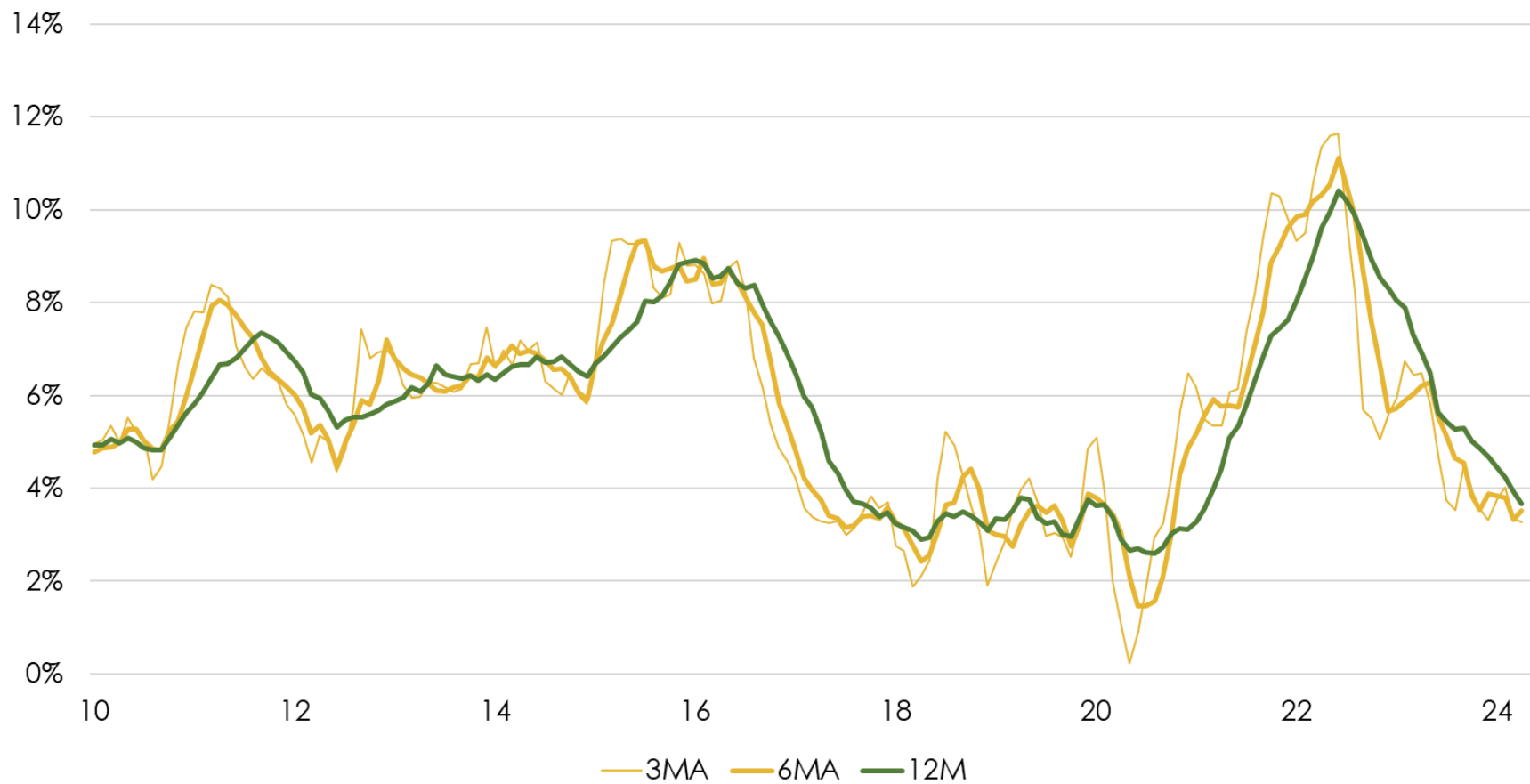


DP Core

DP (MoM SA)

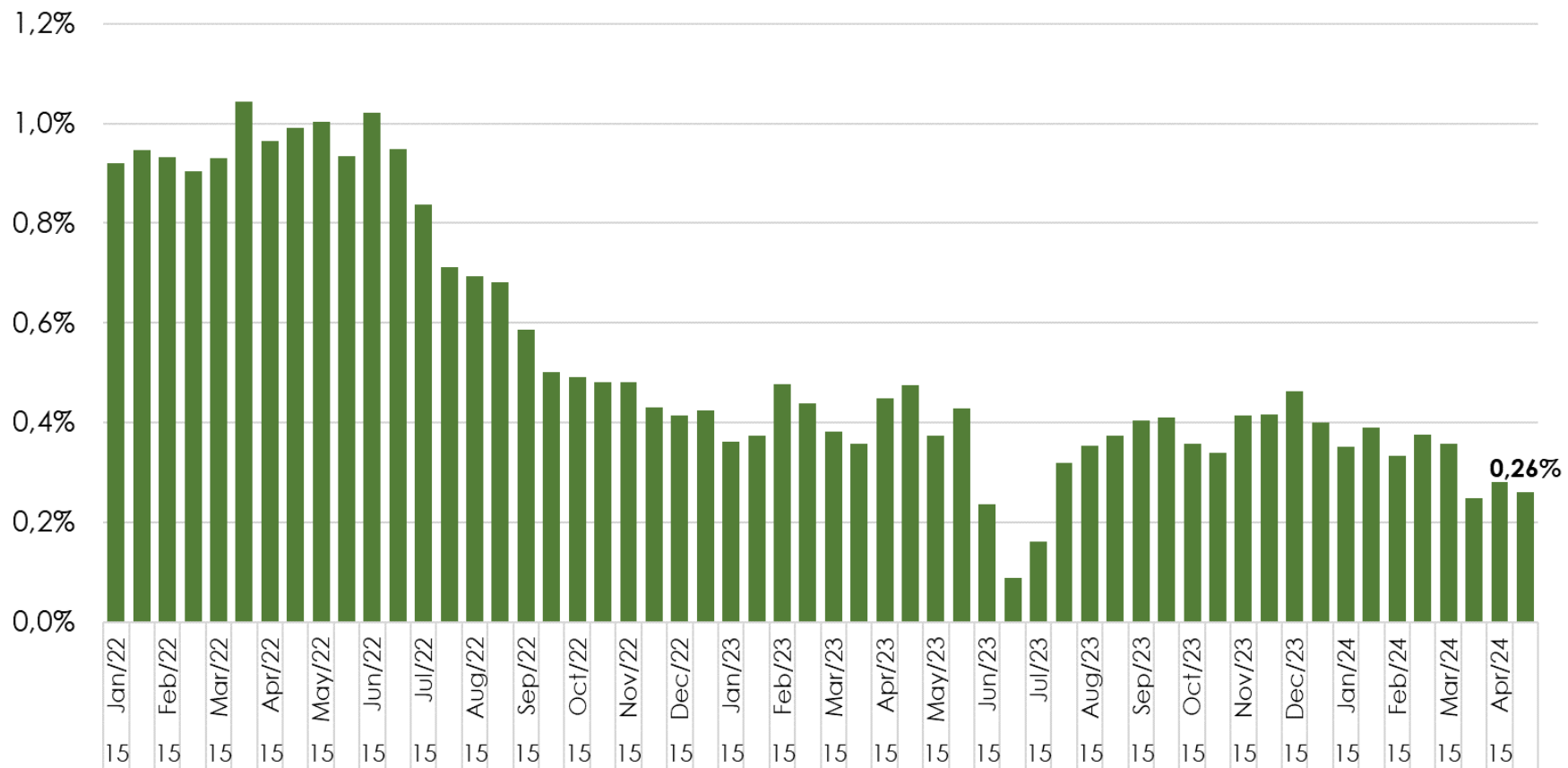


DP Core

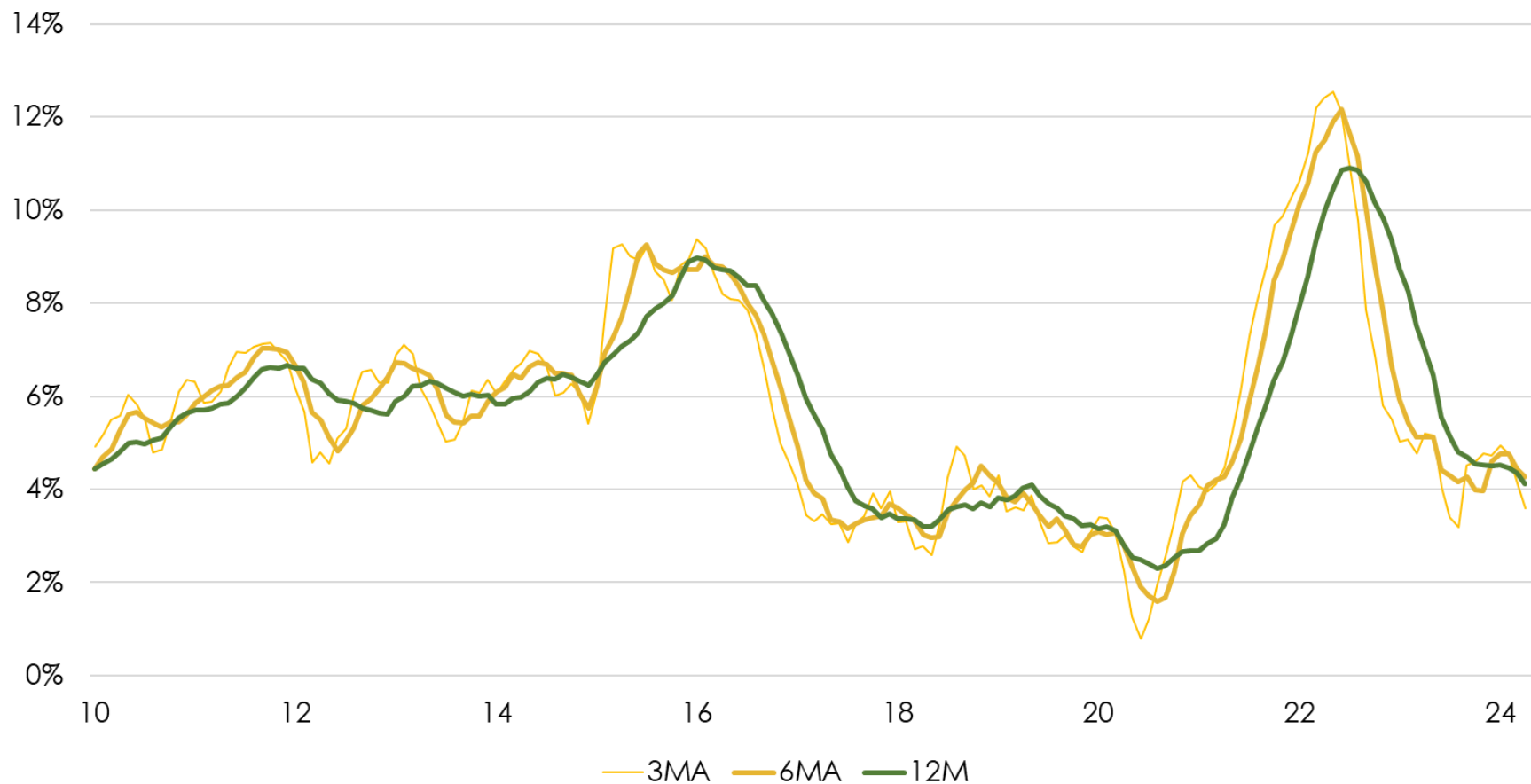


MS Core

MS (MoM SA)

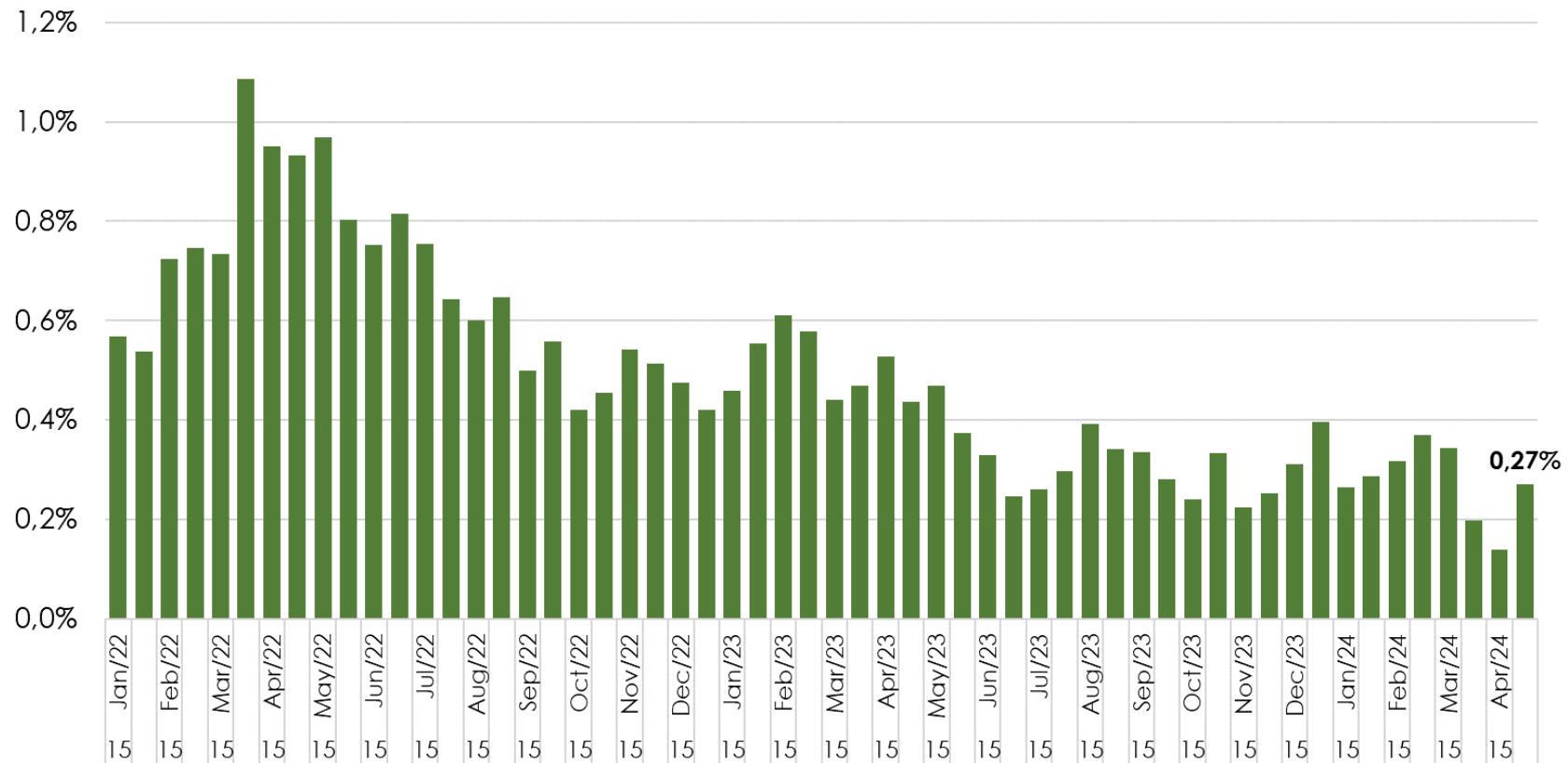


MS Core



P55 Core

P55 (MoM SA)

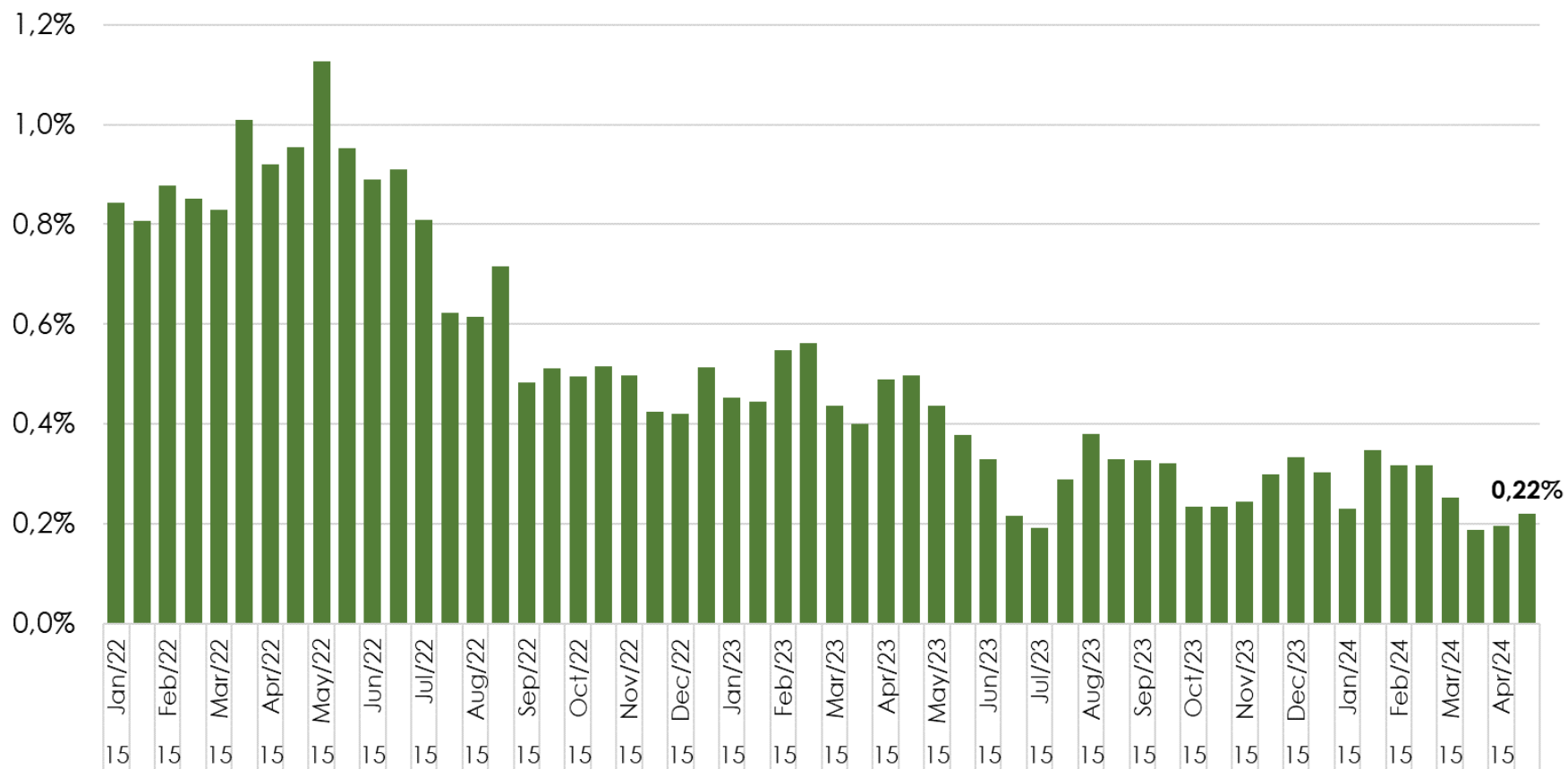


P55 Core

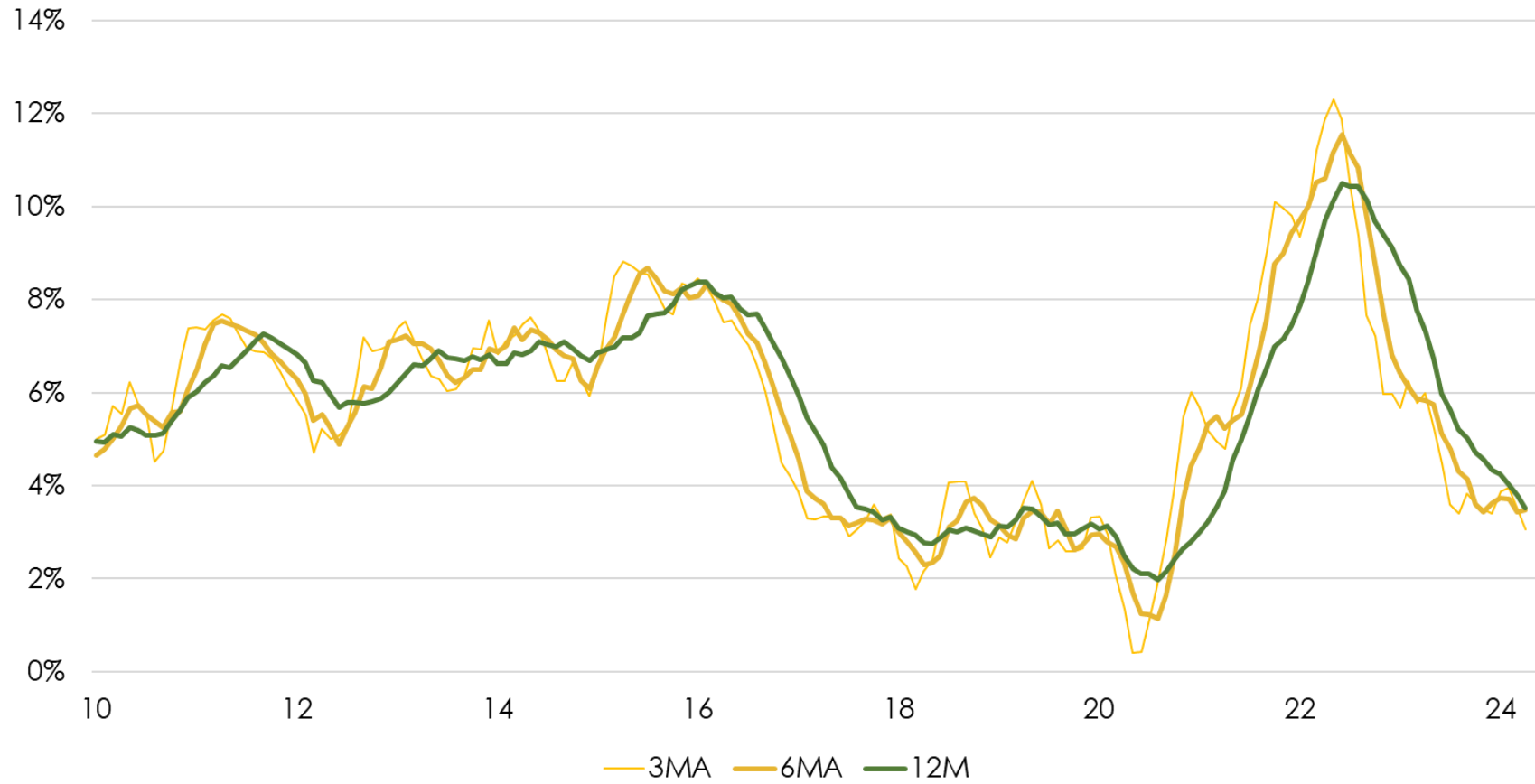


Core average

Core average (MoM SA)

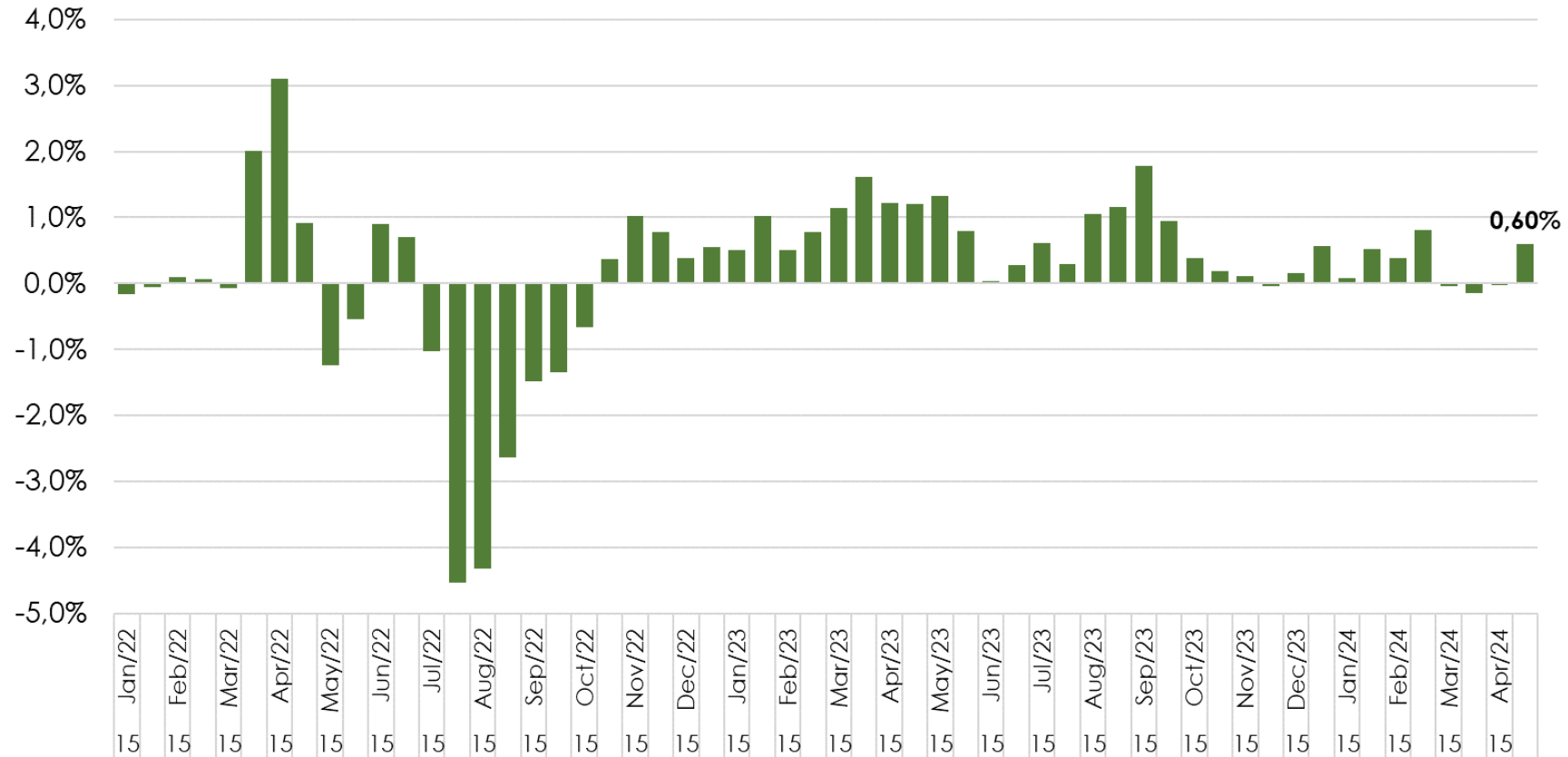


Core average

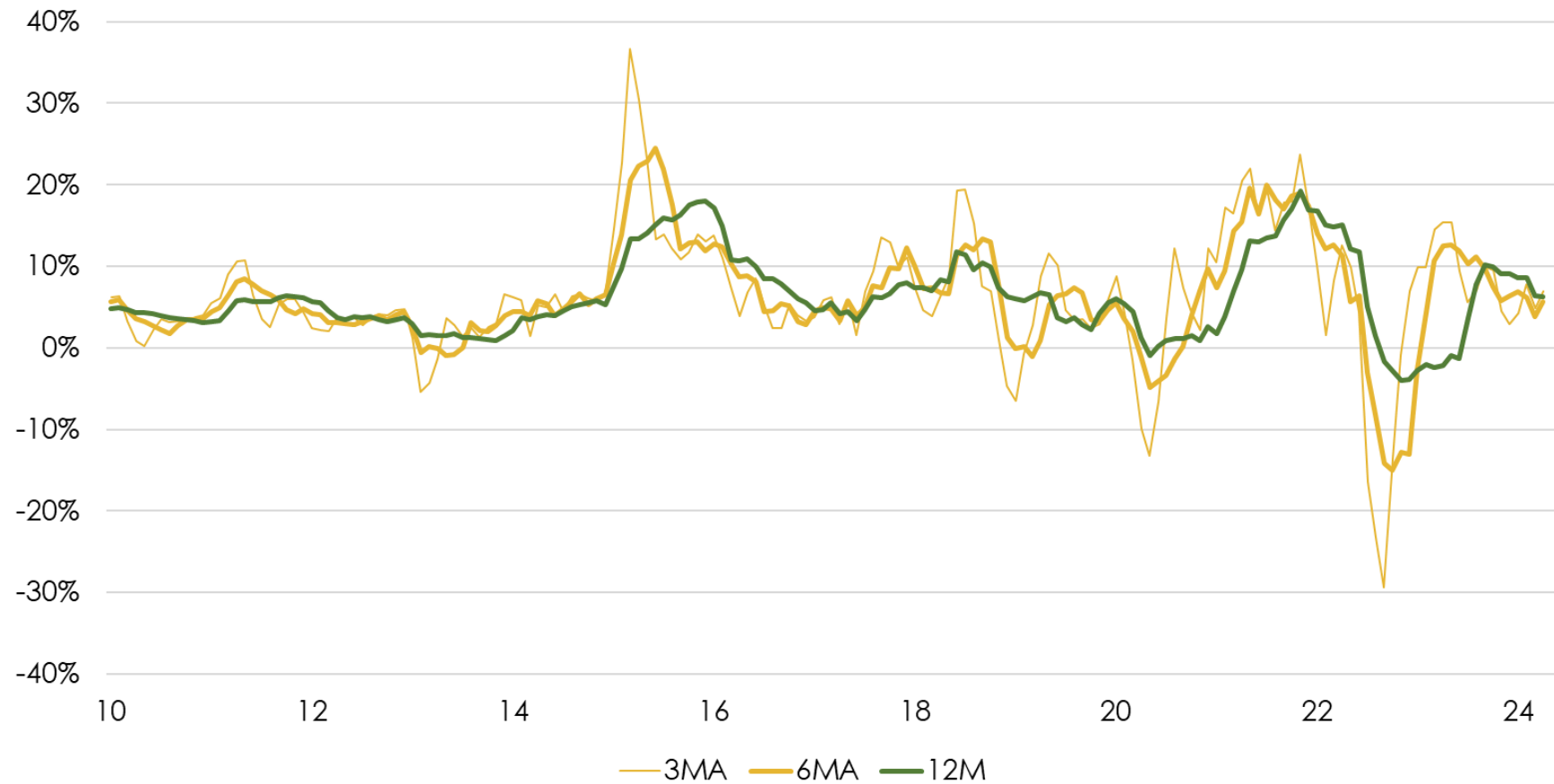


Administered prices

Administered prices (MoM SA)

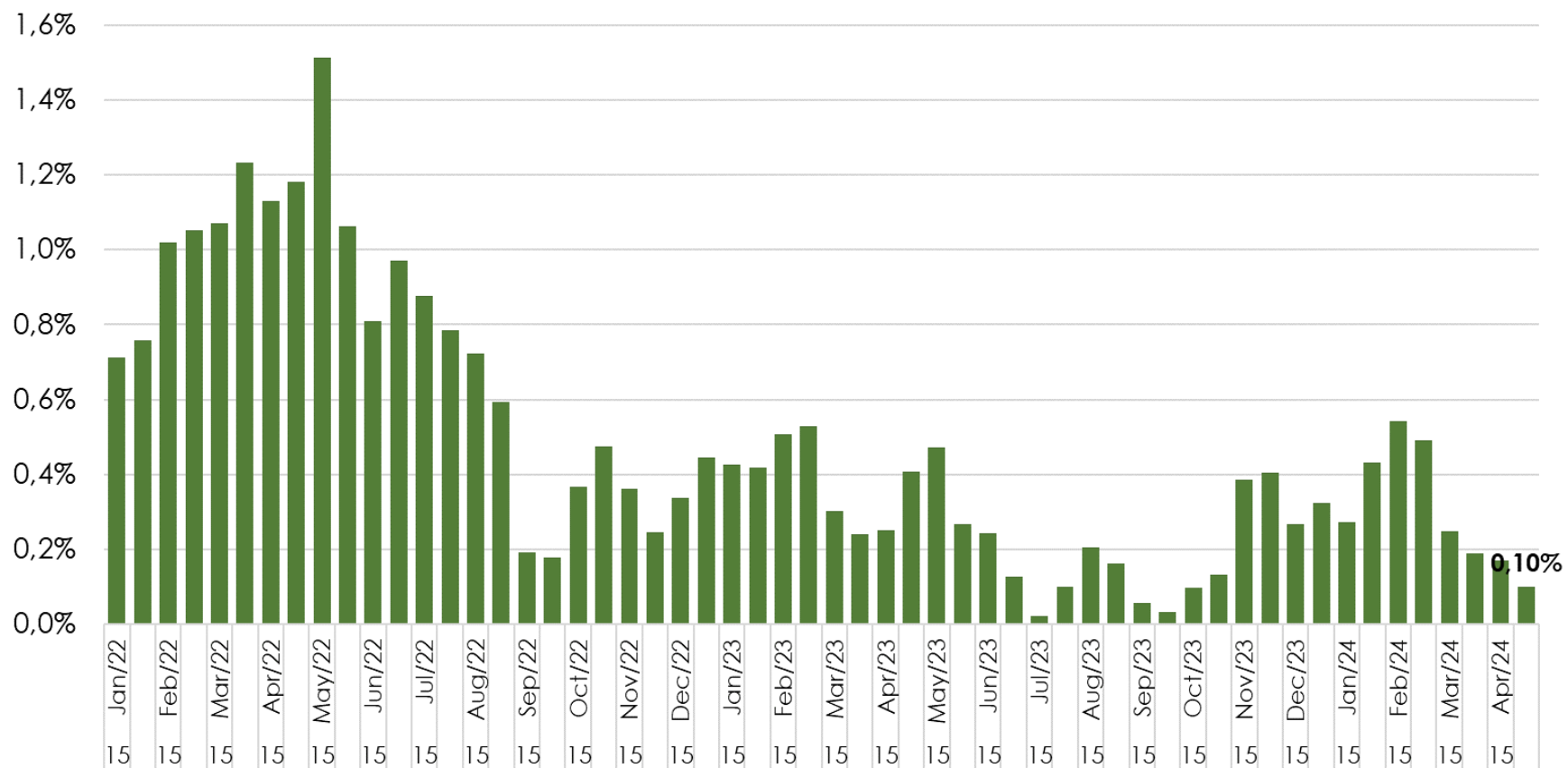


Administered prices

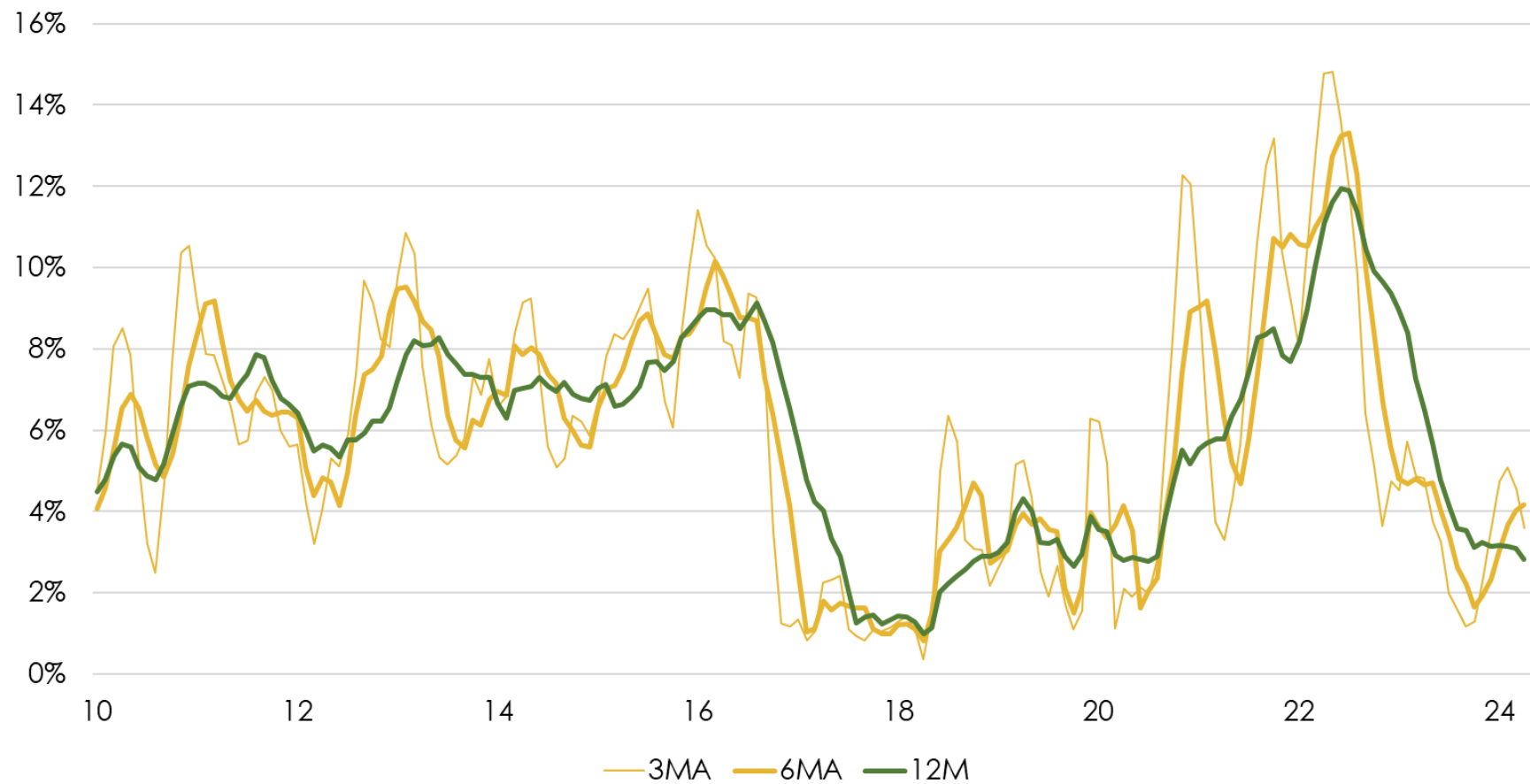


Free prices

Free prices (MoM SA)

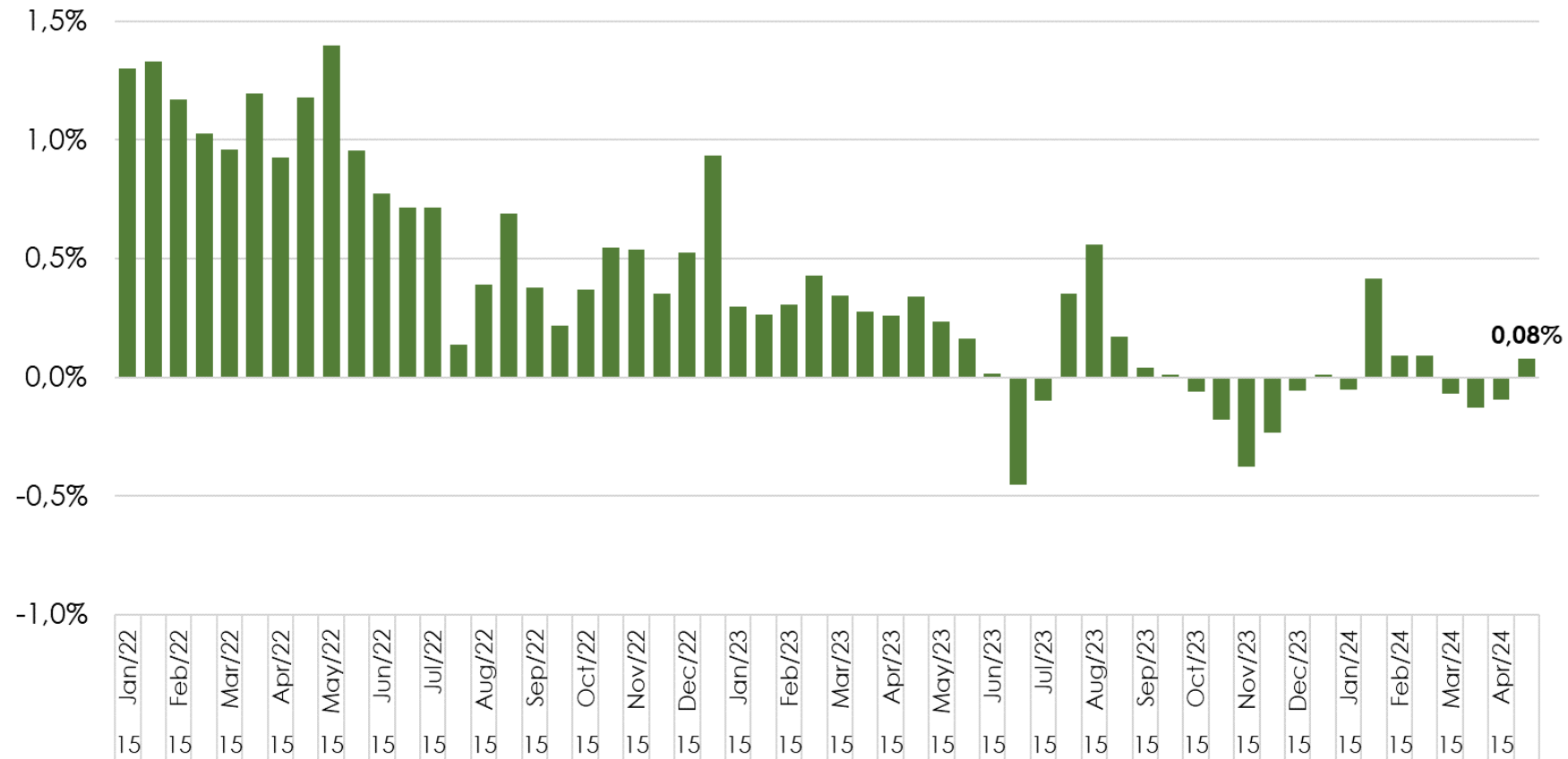


Free prices

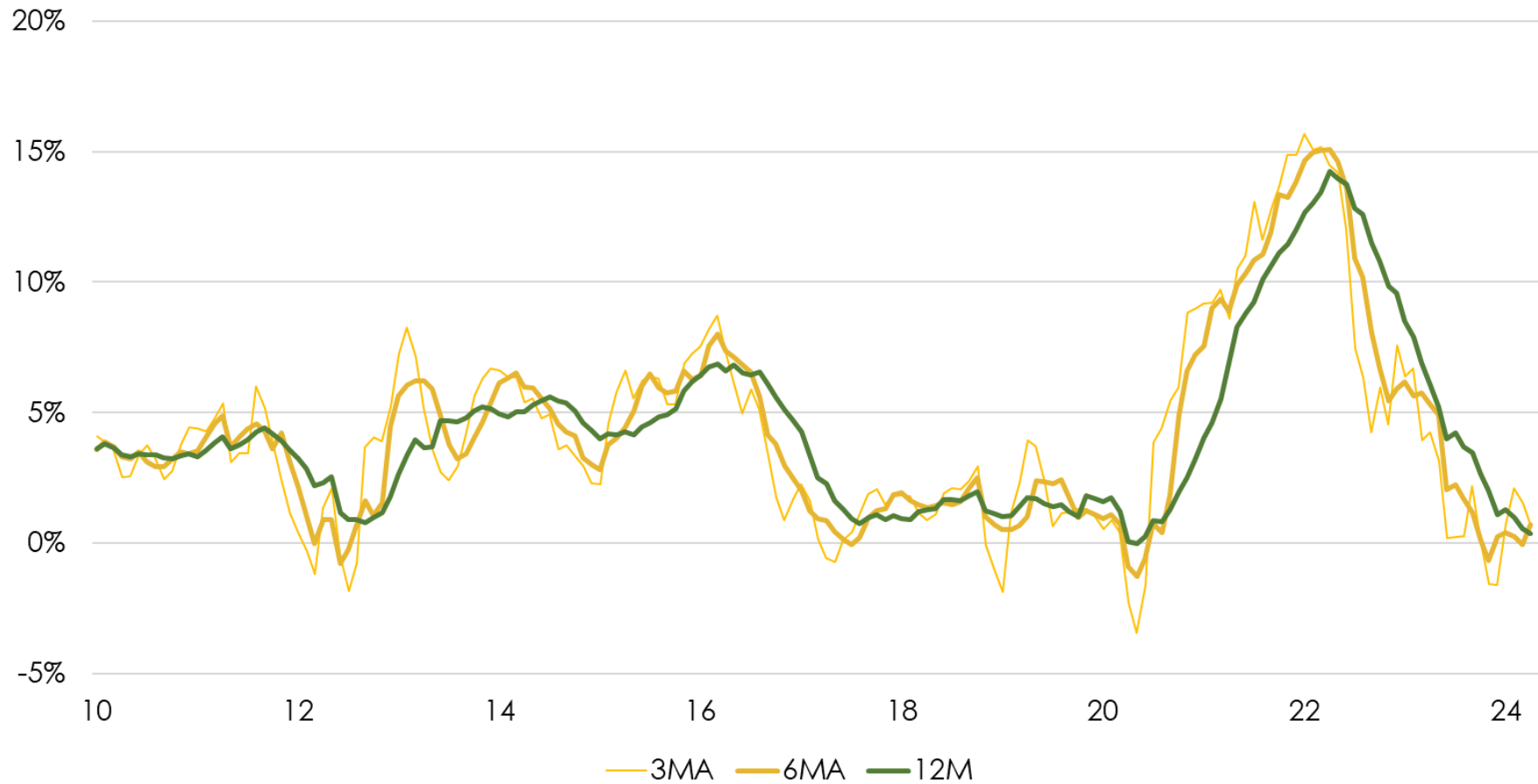


Industrial goods

Industrial goods (MoM SA)

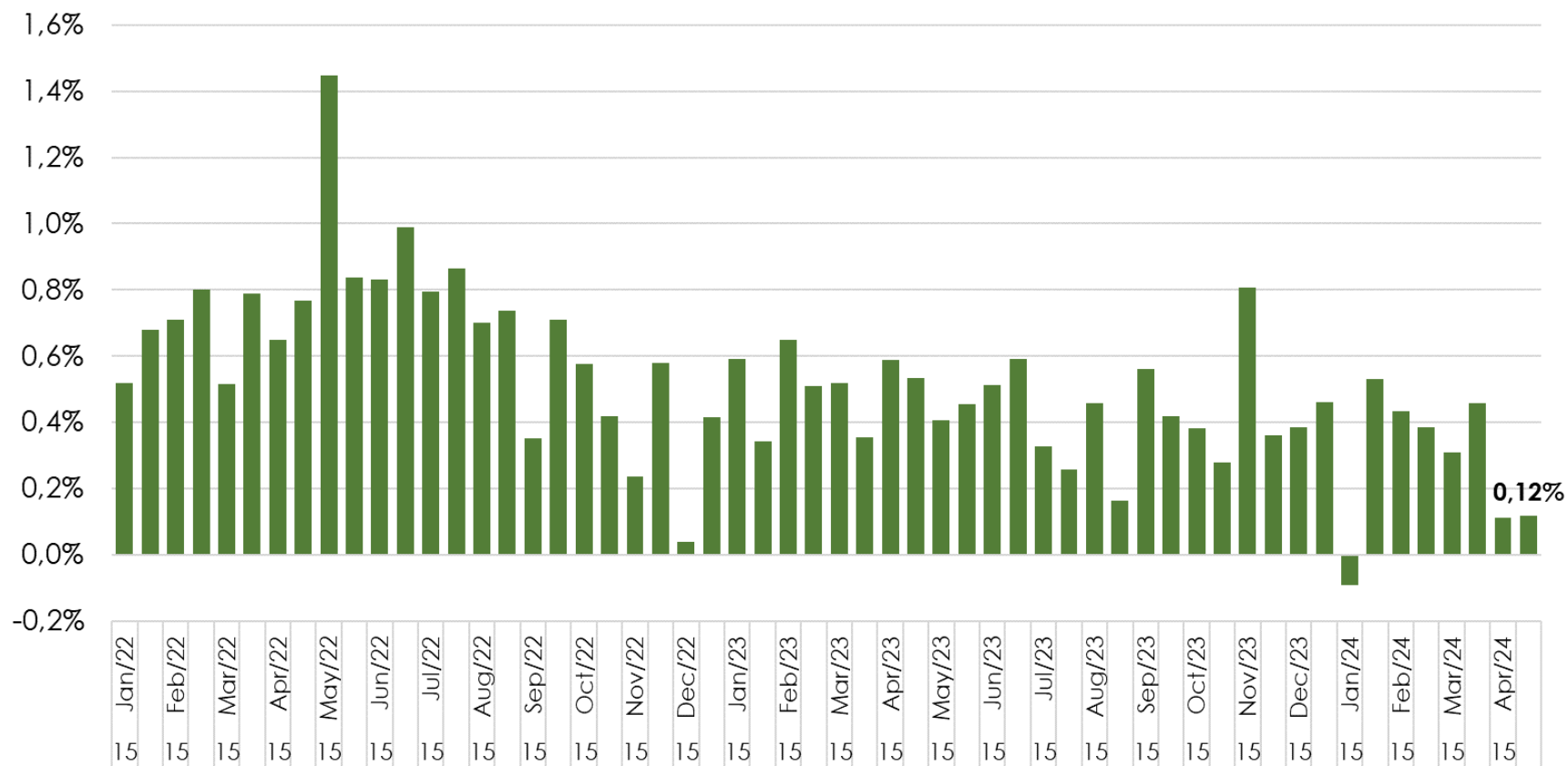


Industrial goods

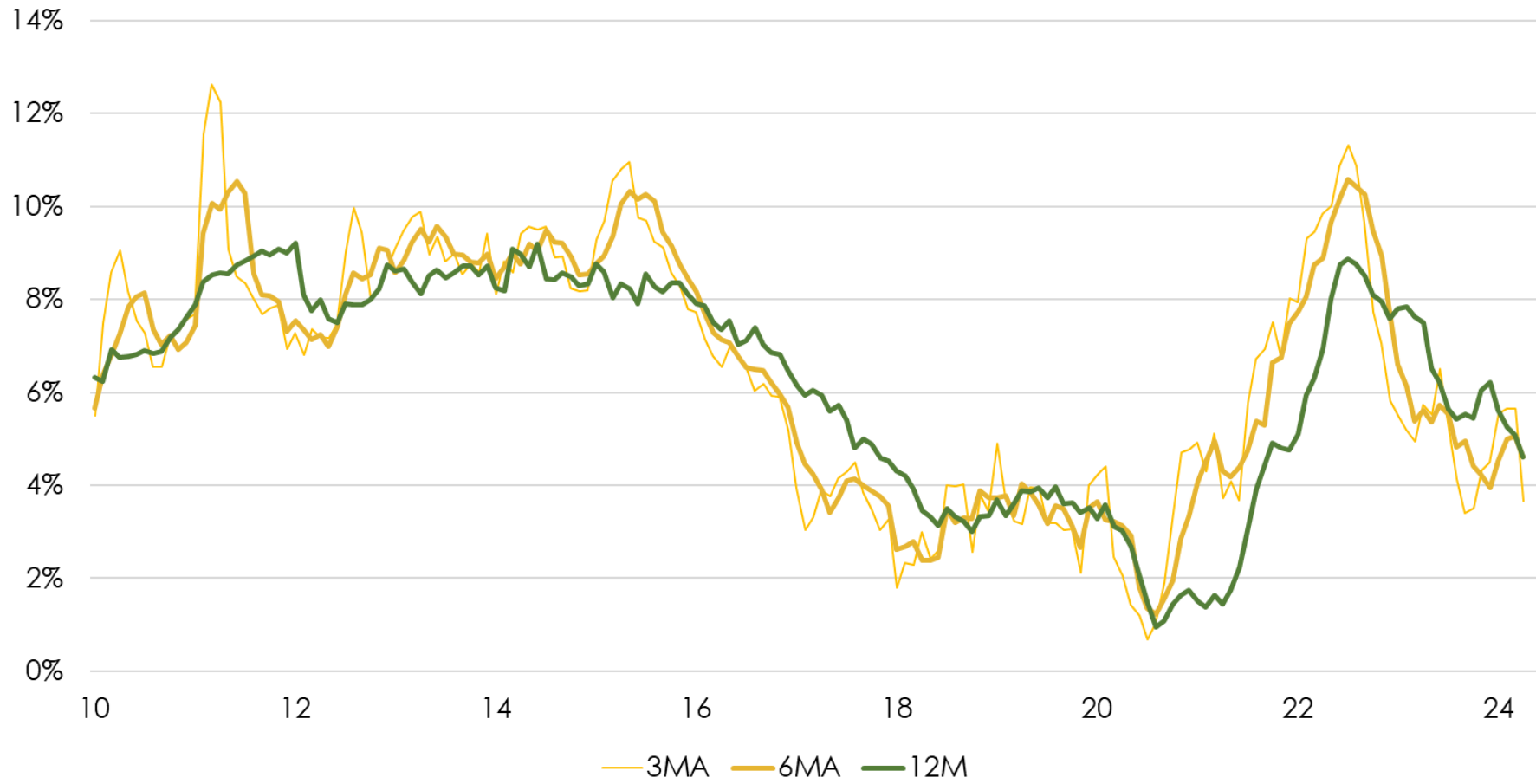


Services

Services (MoM SA)

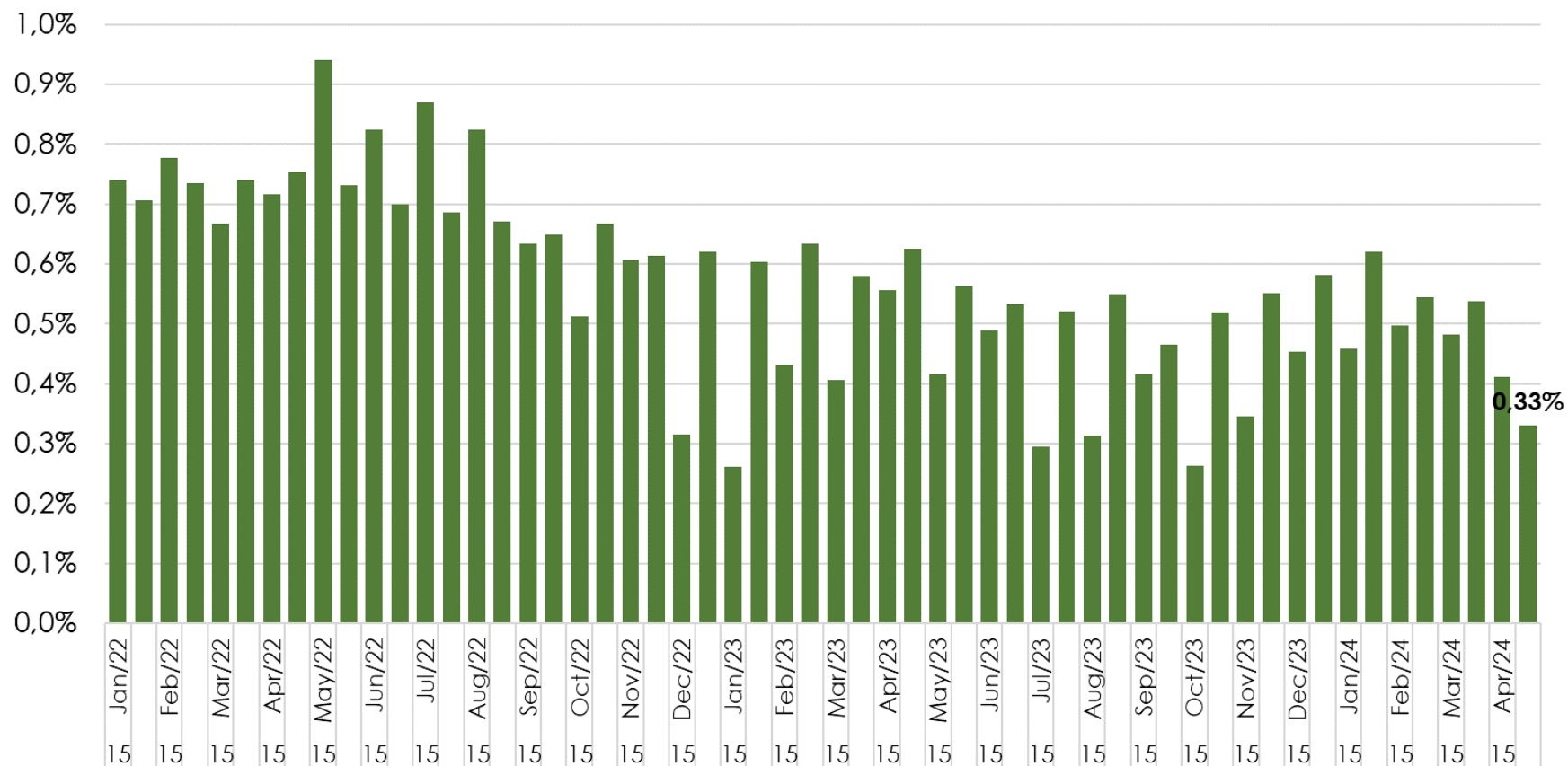


Services

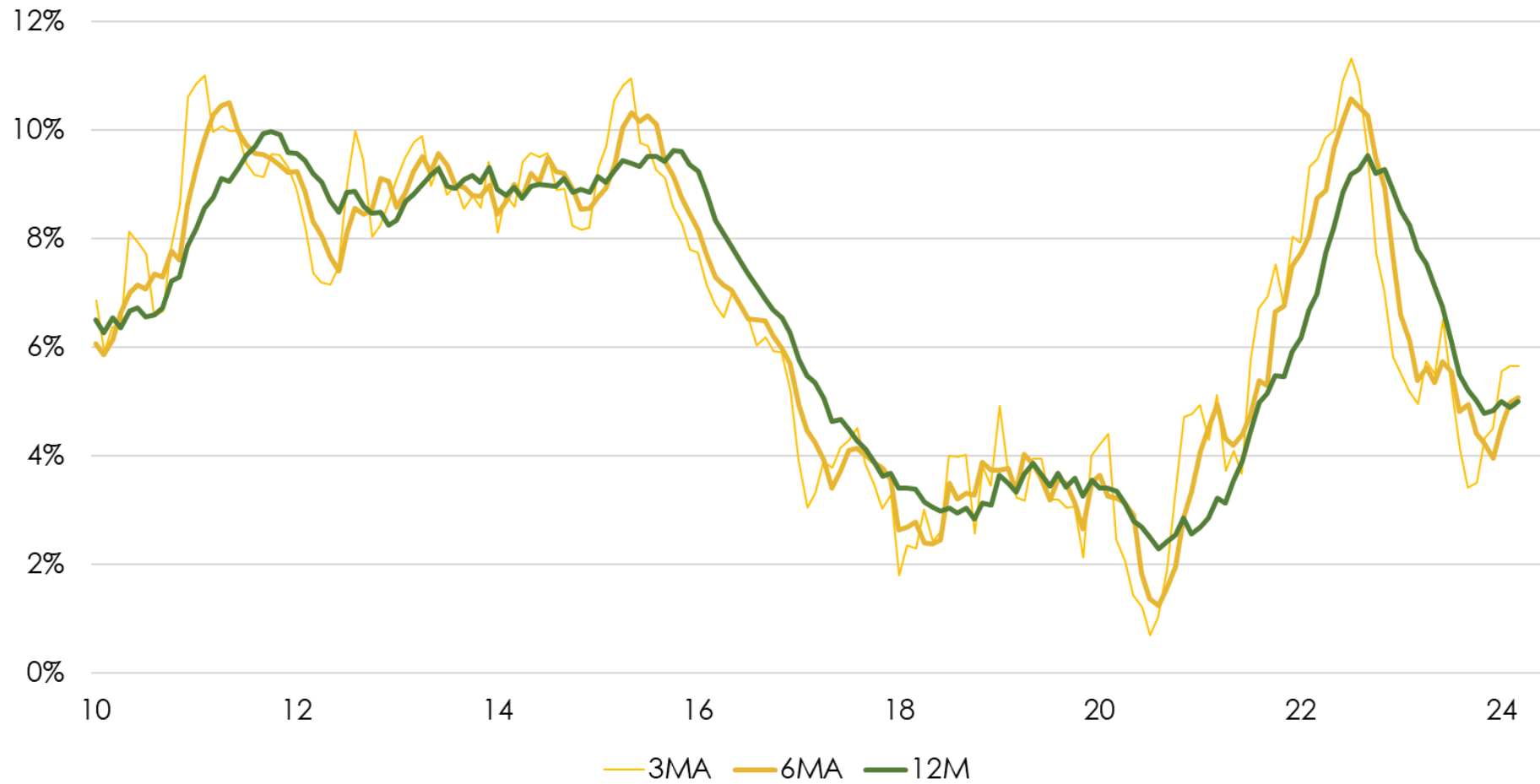


Underlying Services

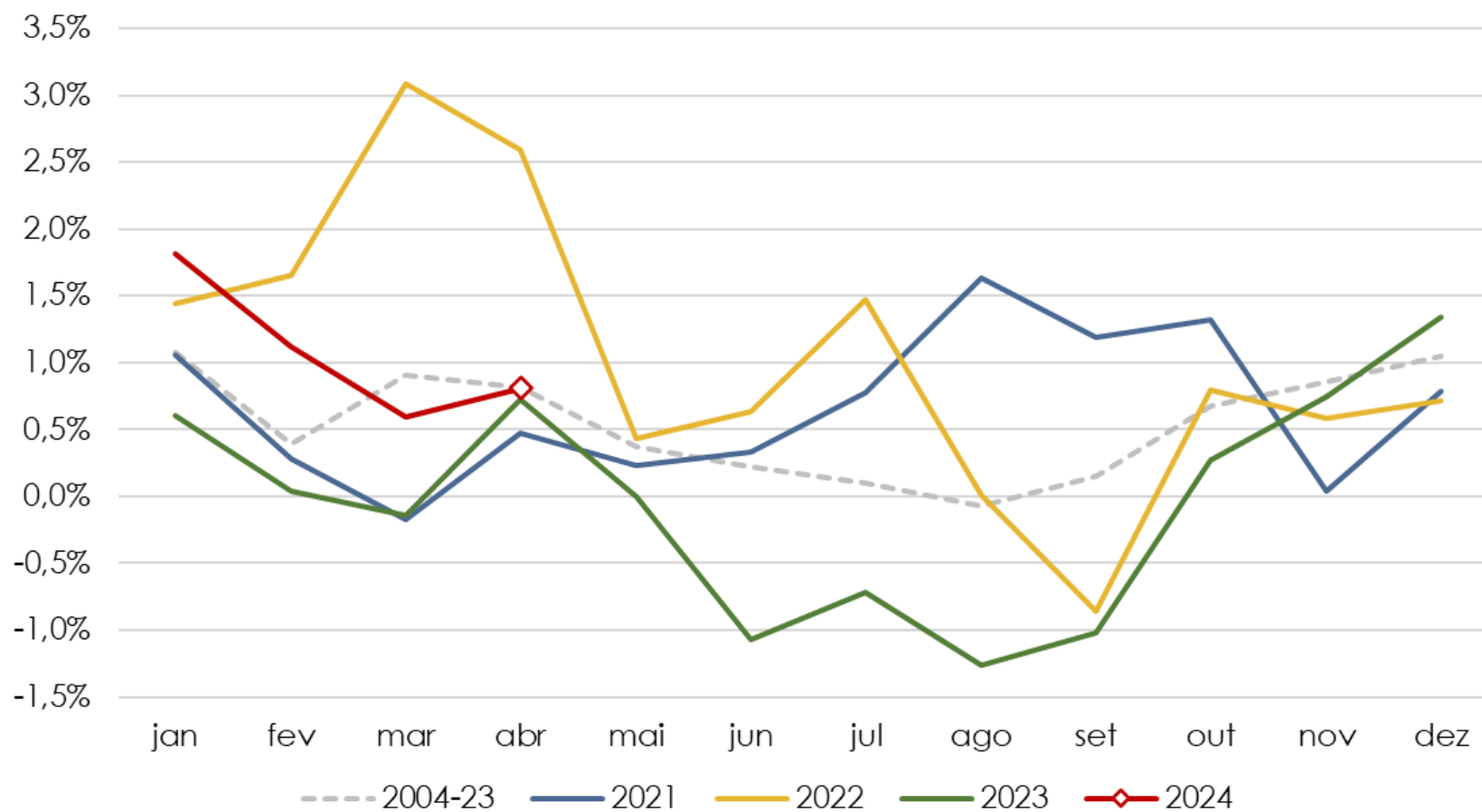
Underlying services (MoM SA)



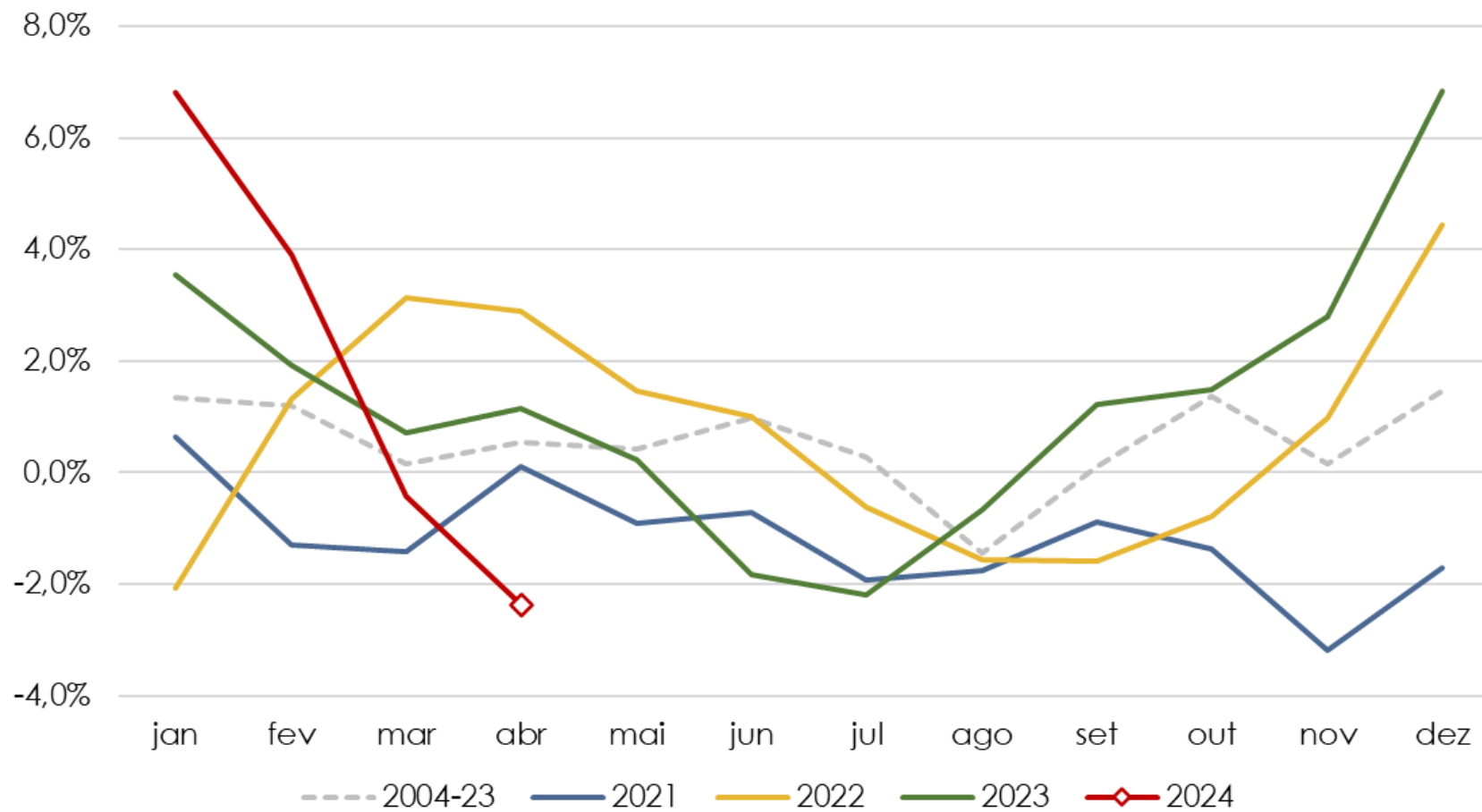
Underlying Services



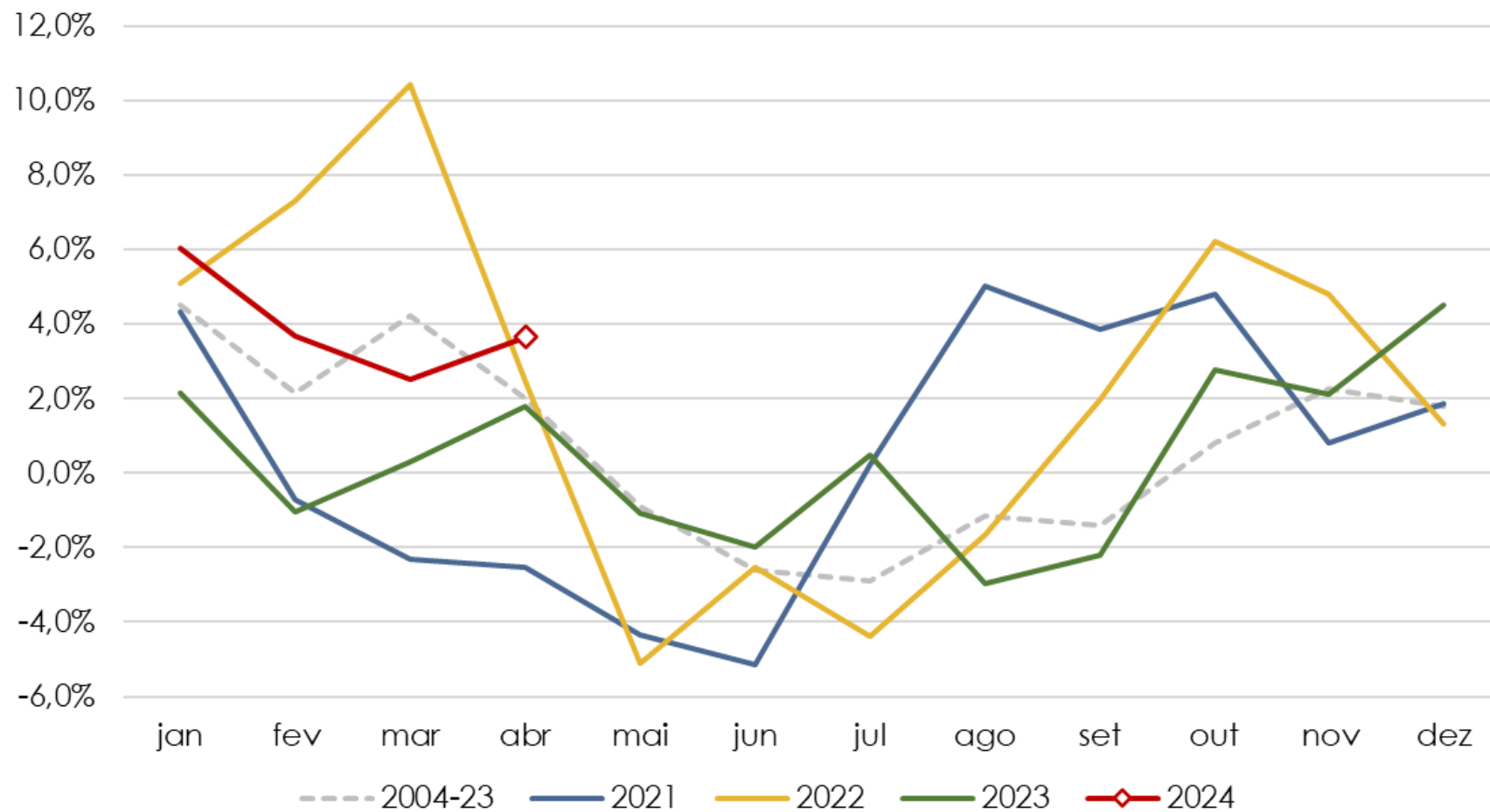
Food at home



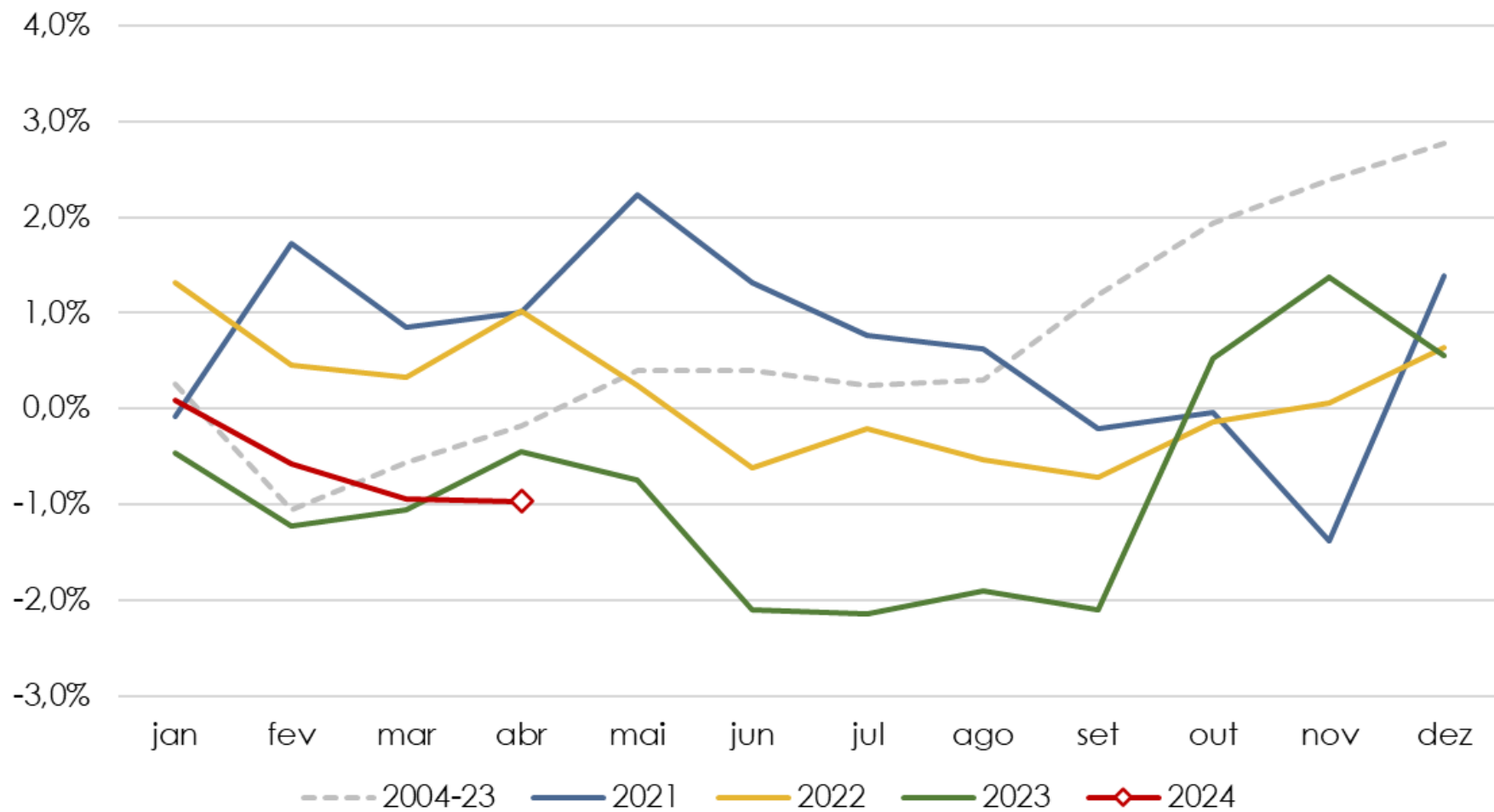
Cereals



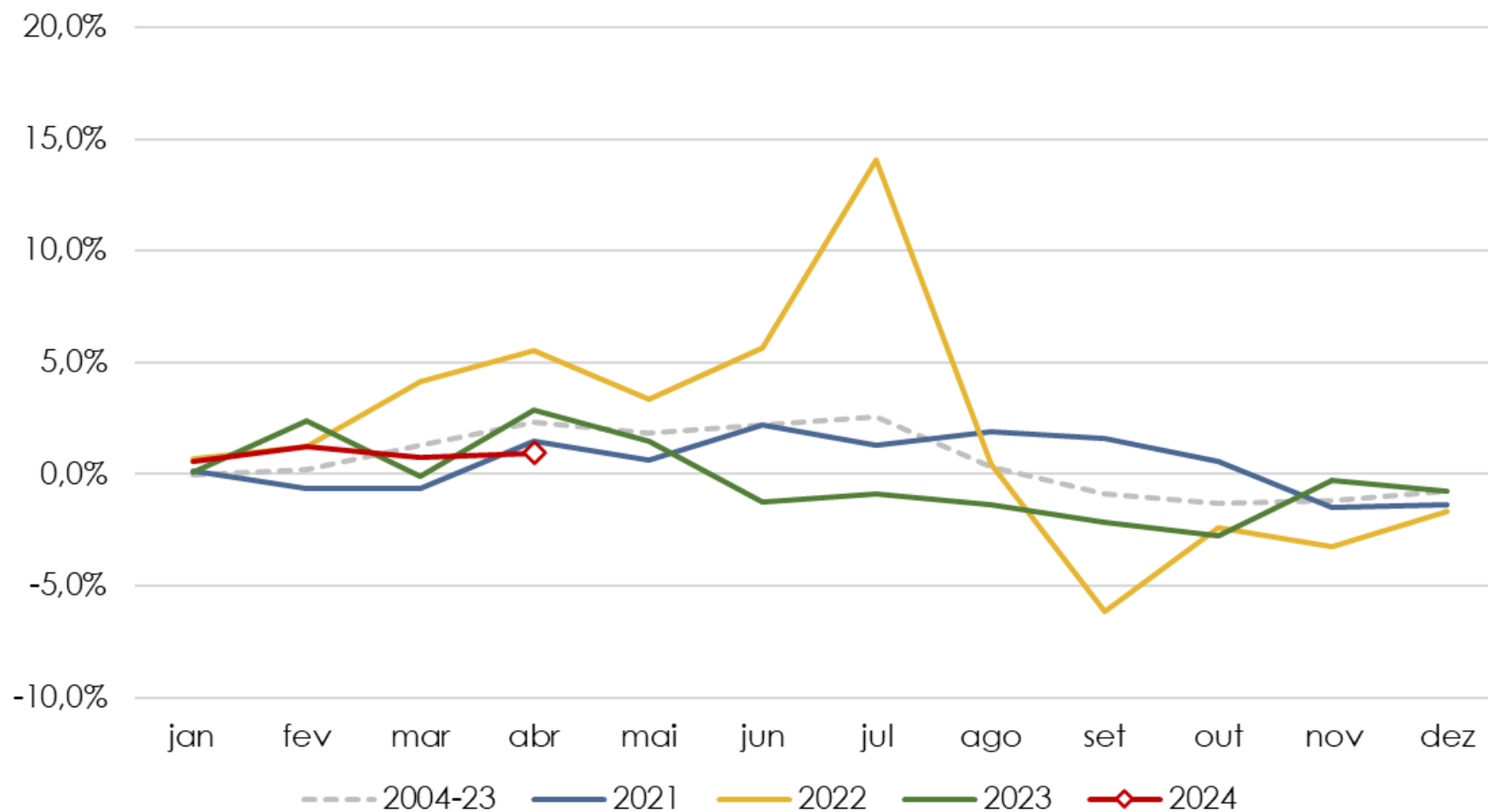
Fresh Products



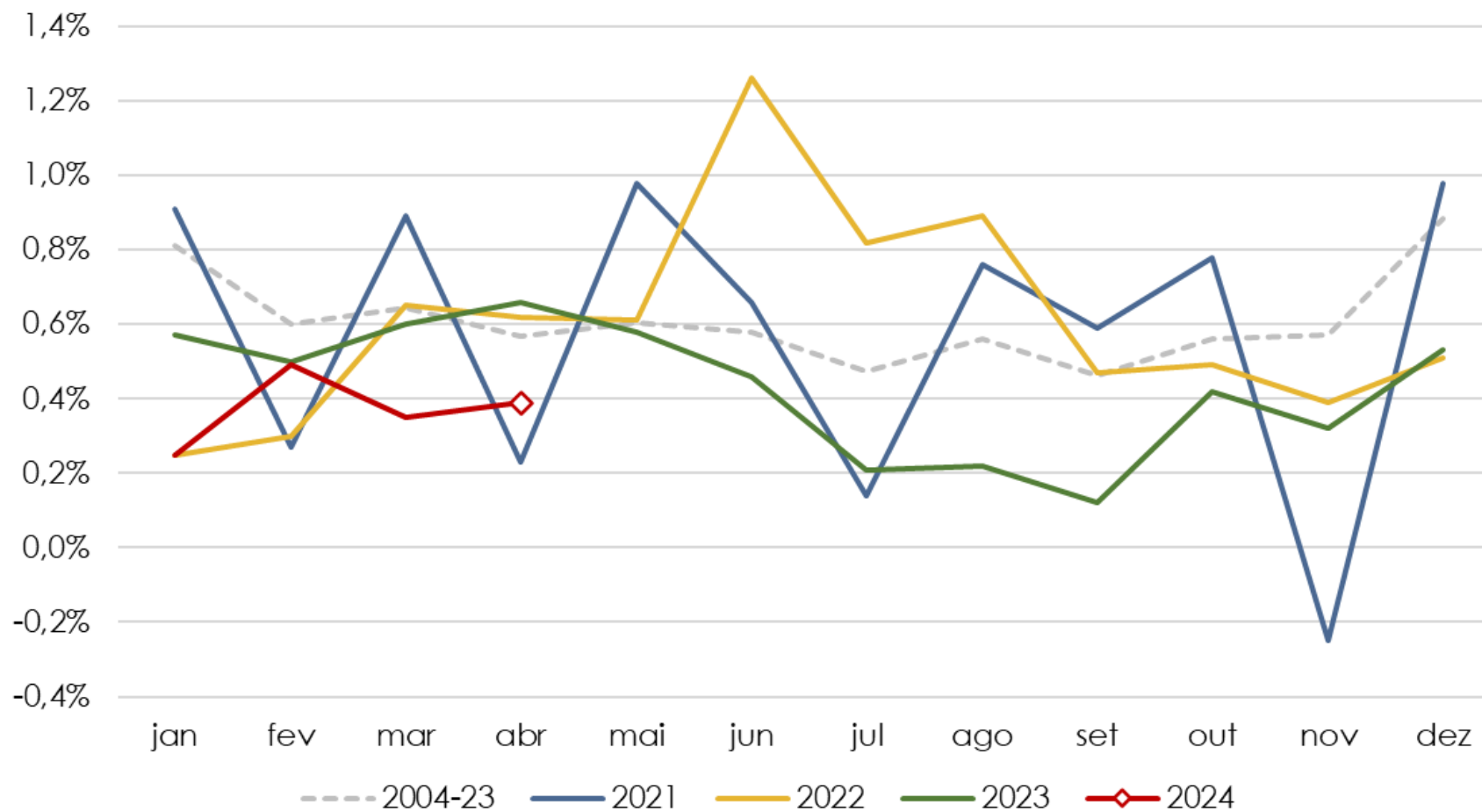
Meat



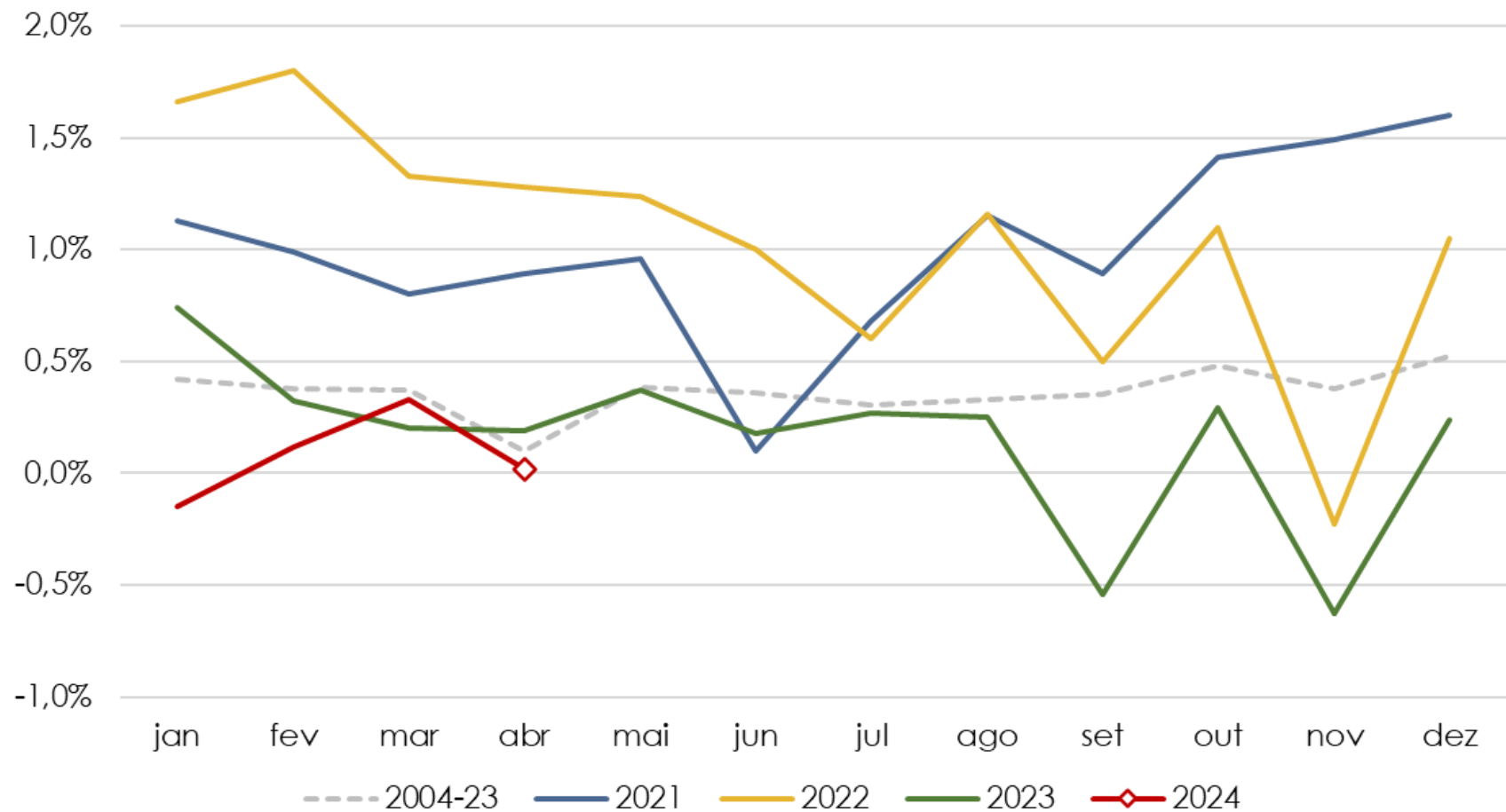
Milk and dairy products



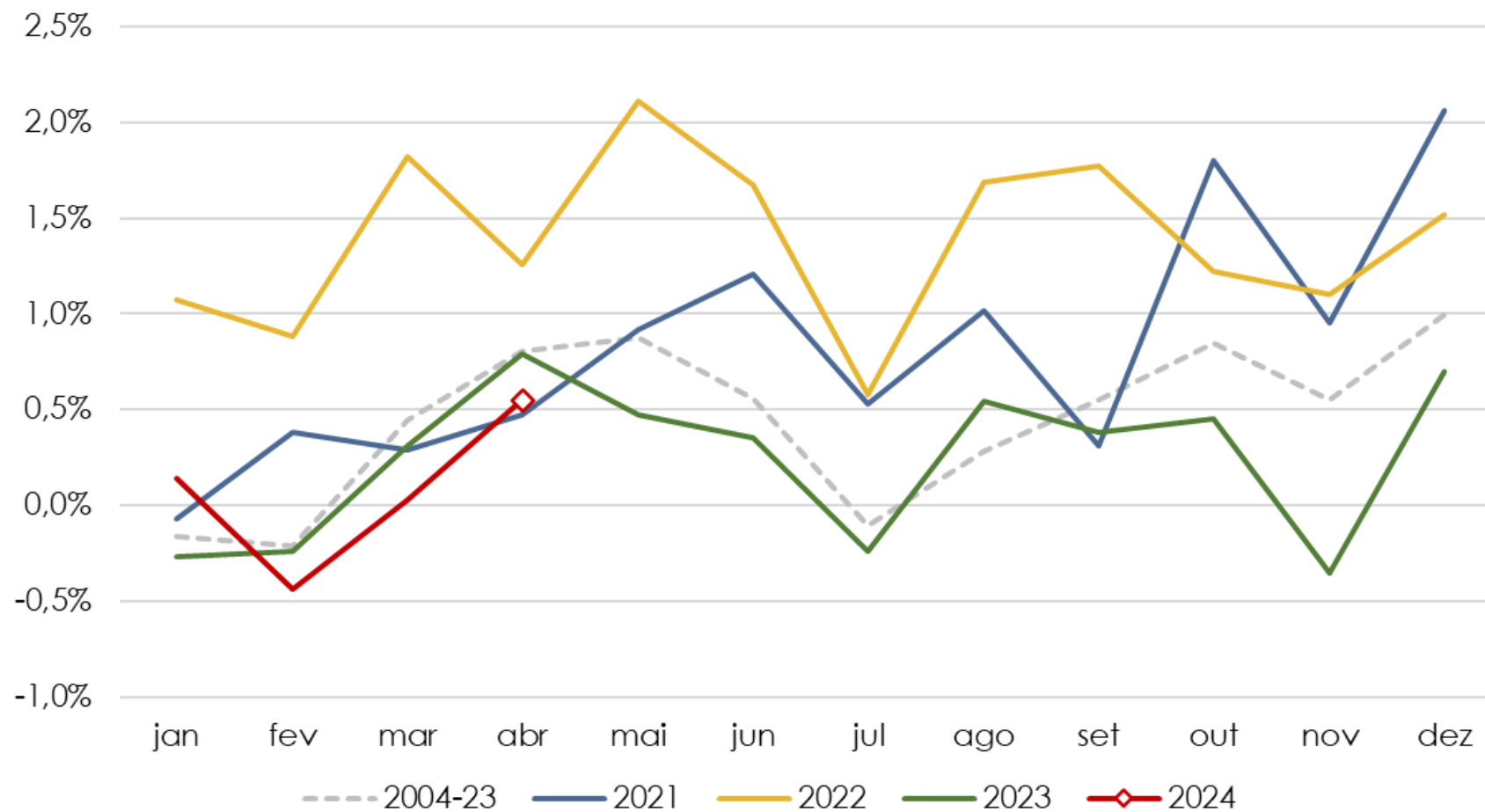
Food away from home



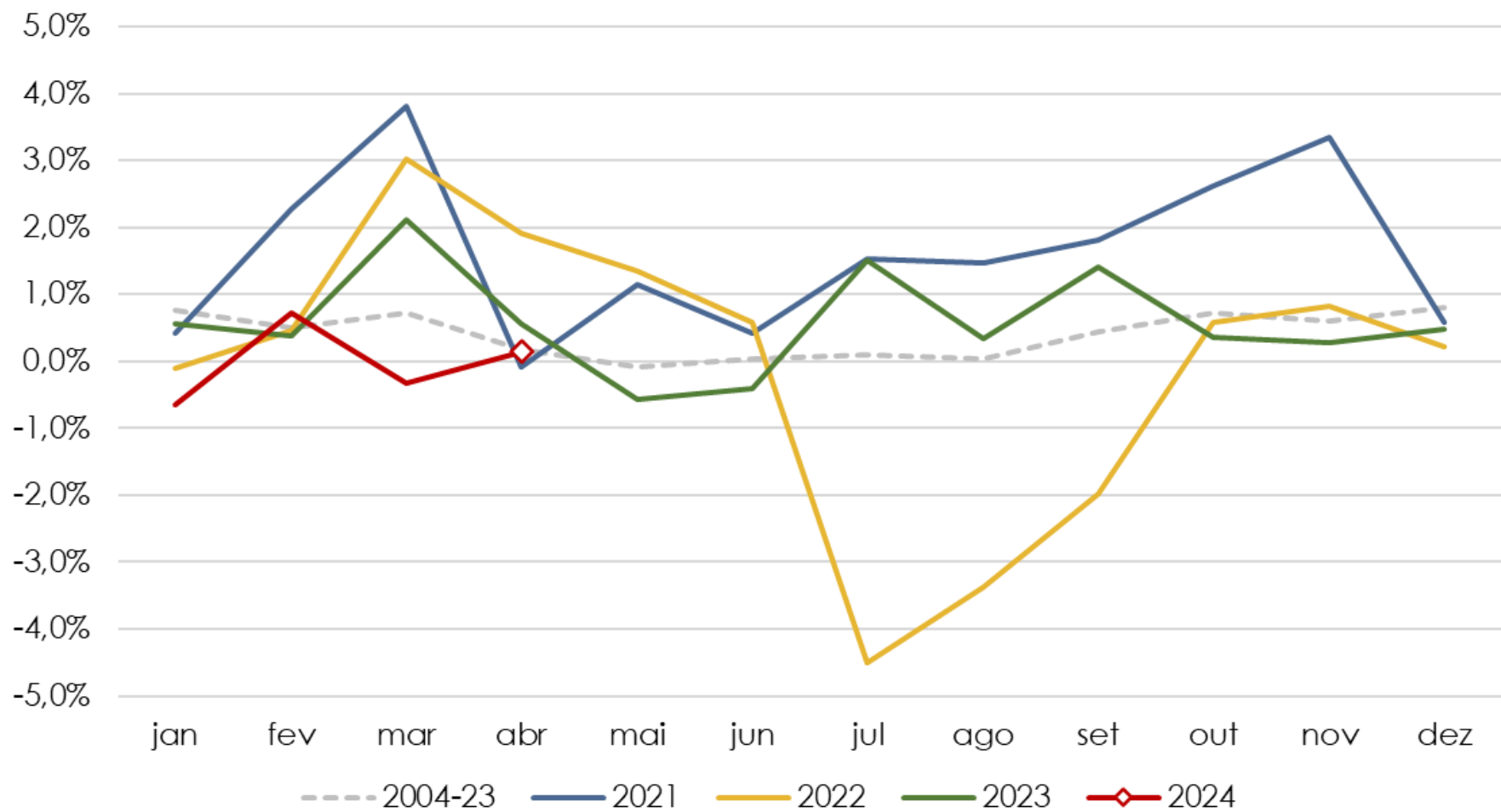
Household furnishings and supplies



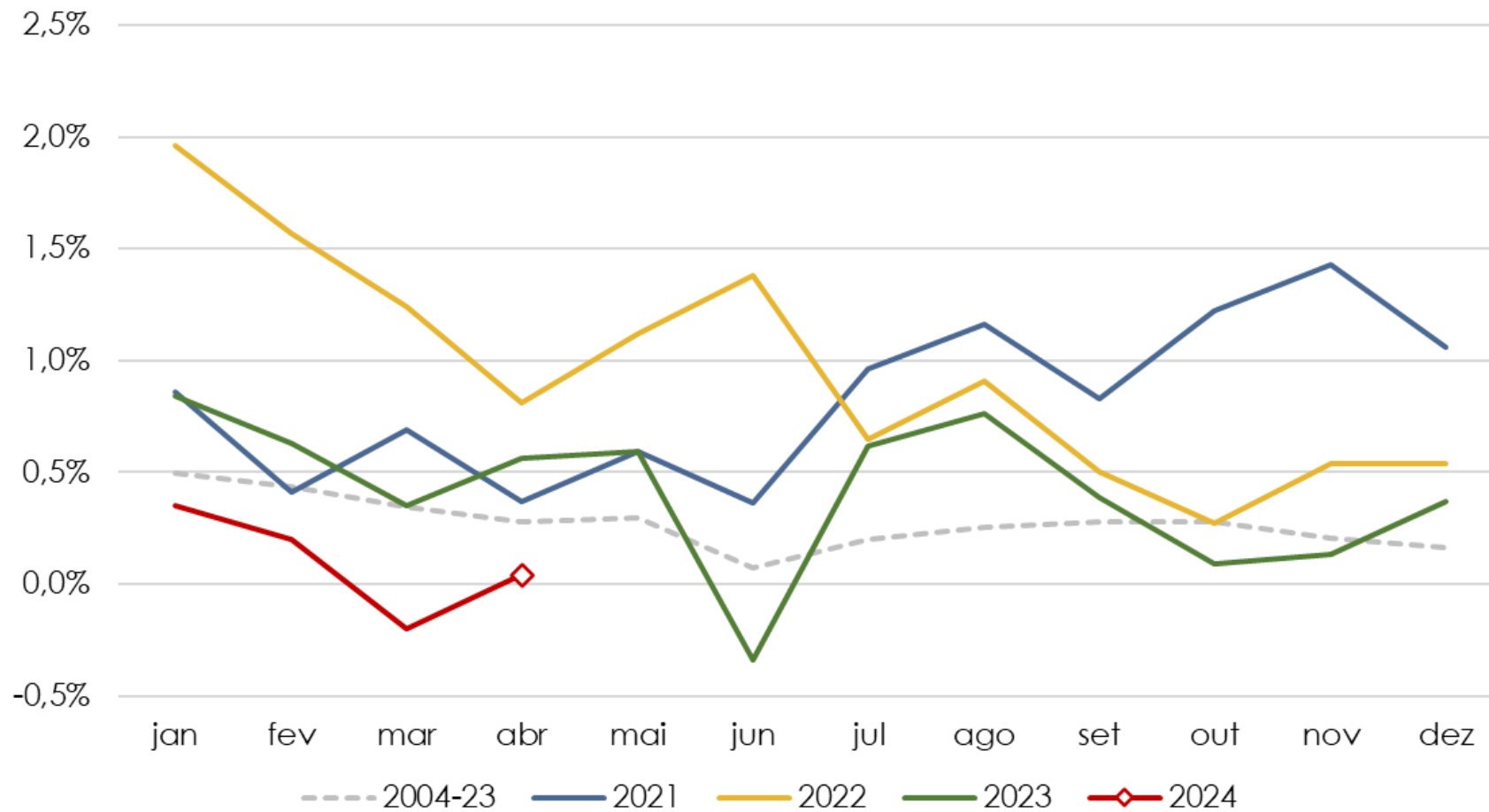
Apparel



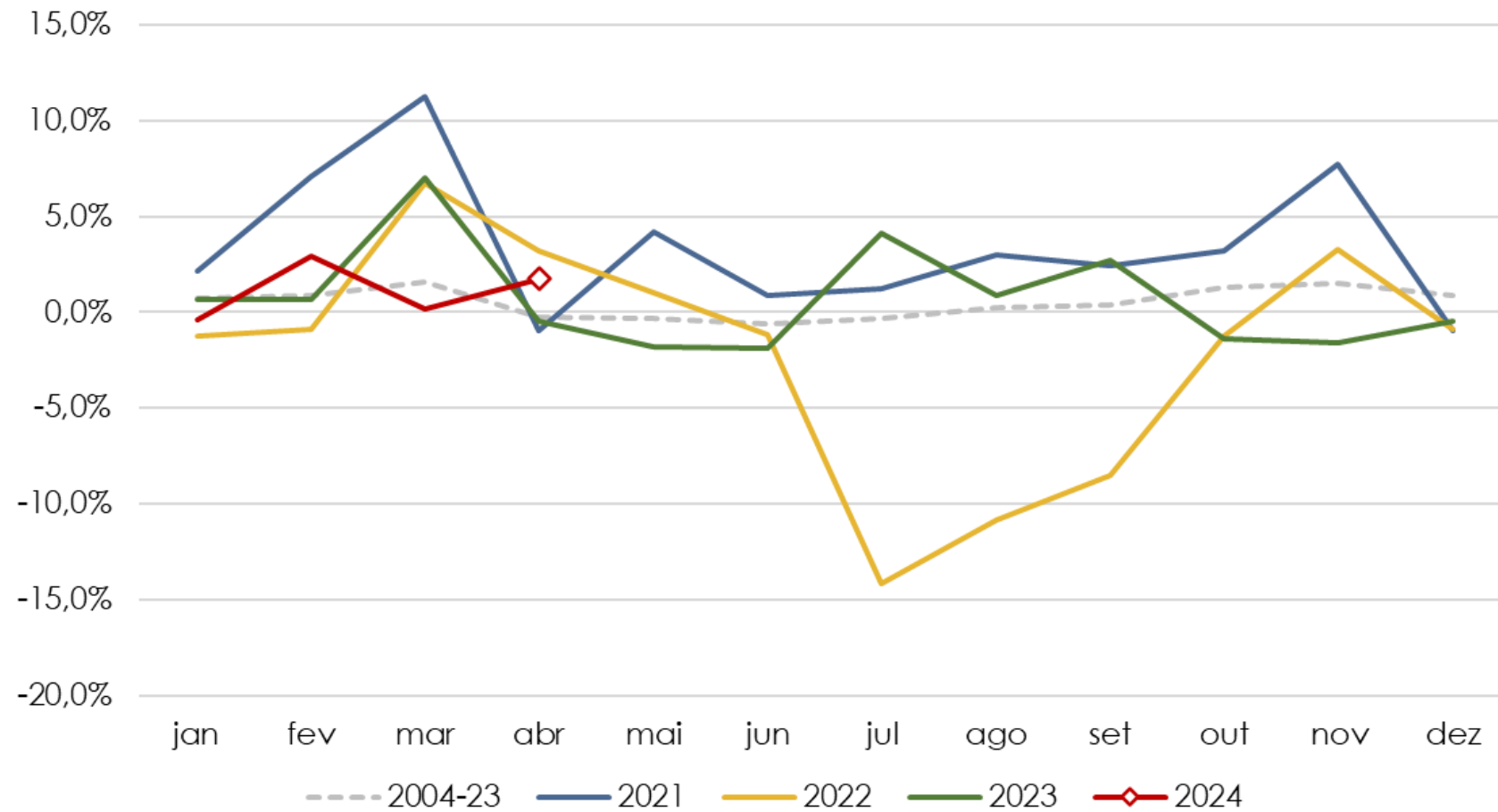
Transport



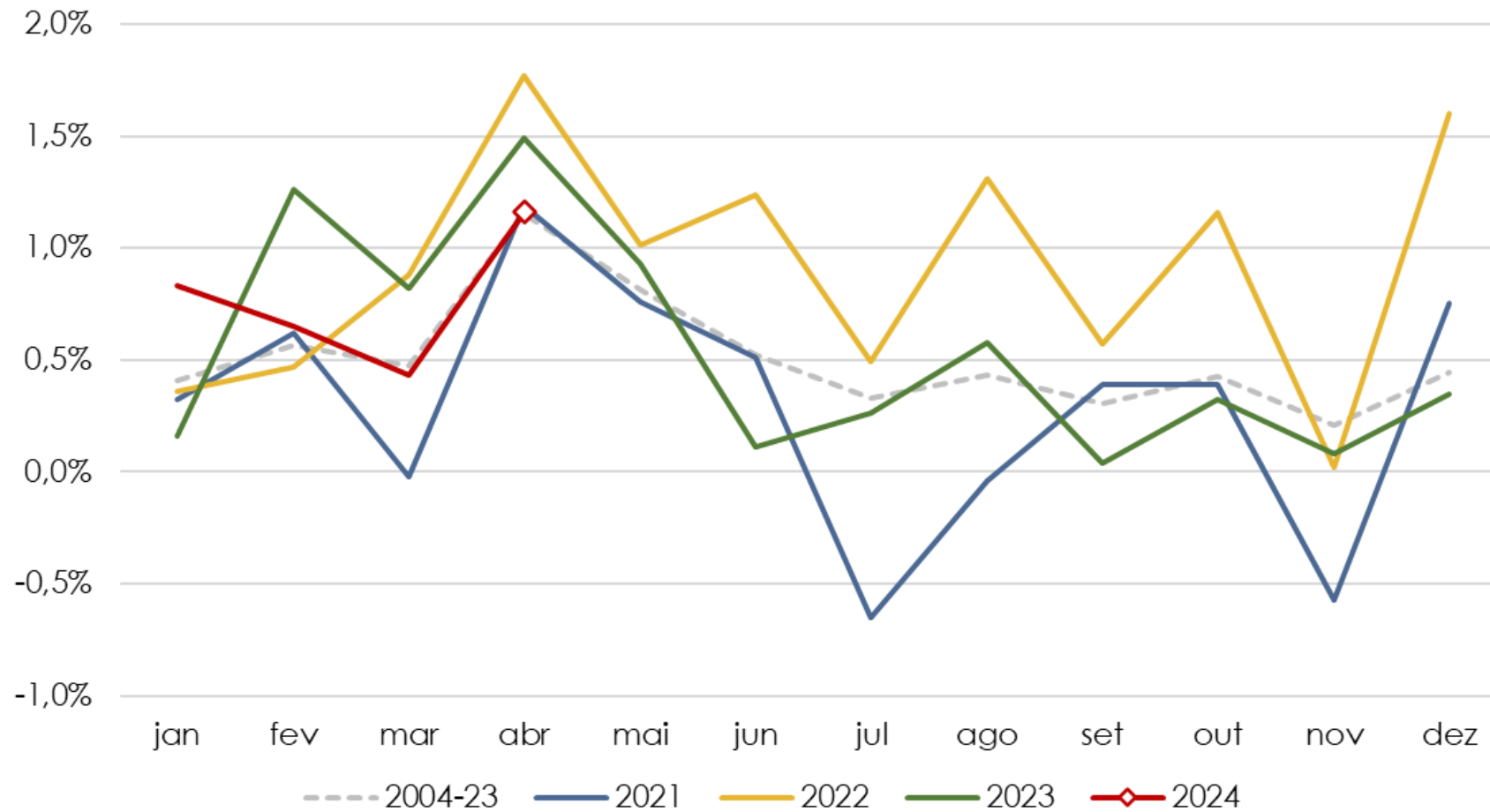
Private vehicle



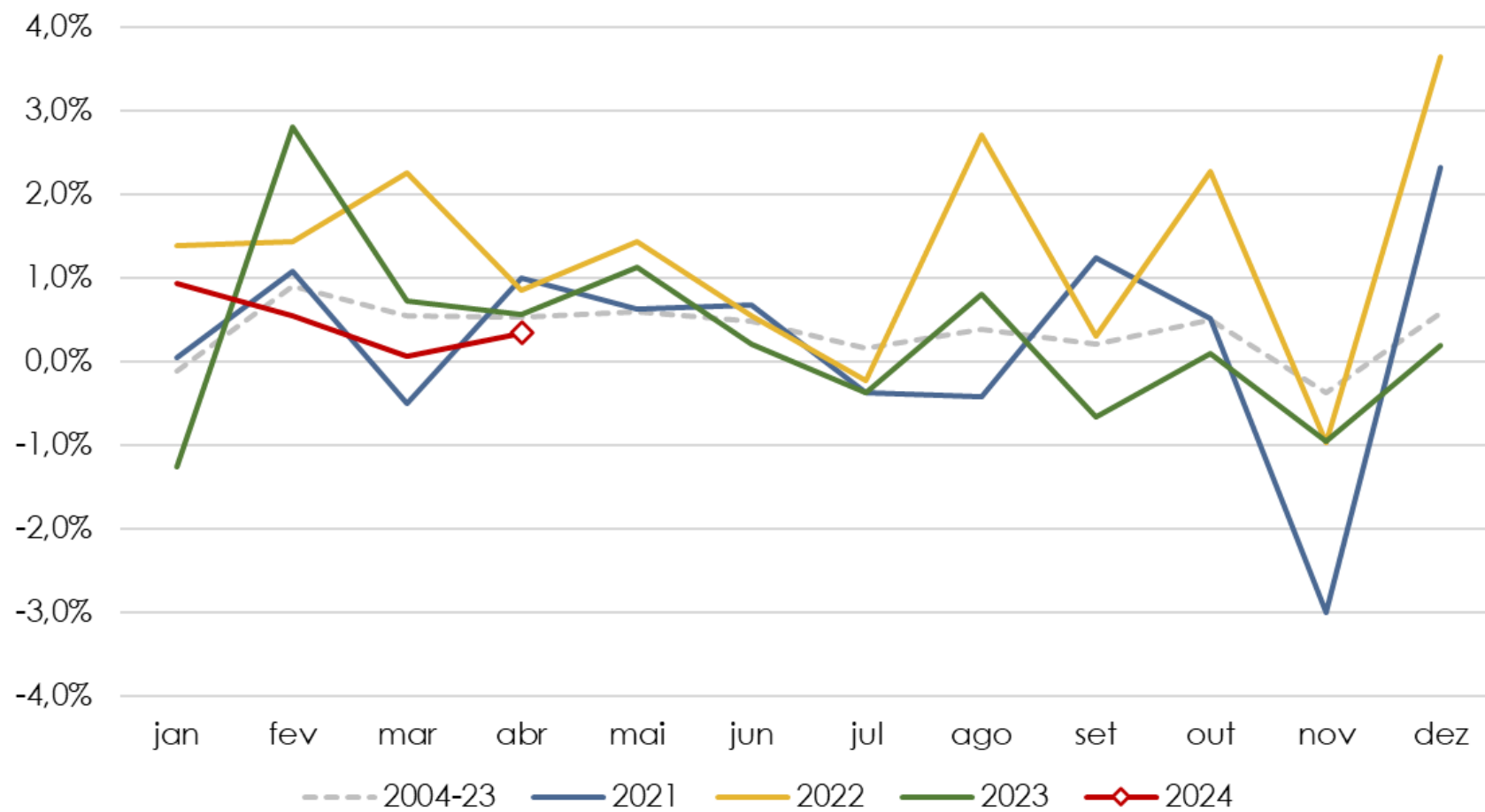
Fuels (vehicles)



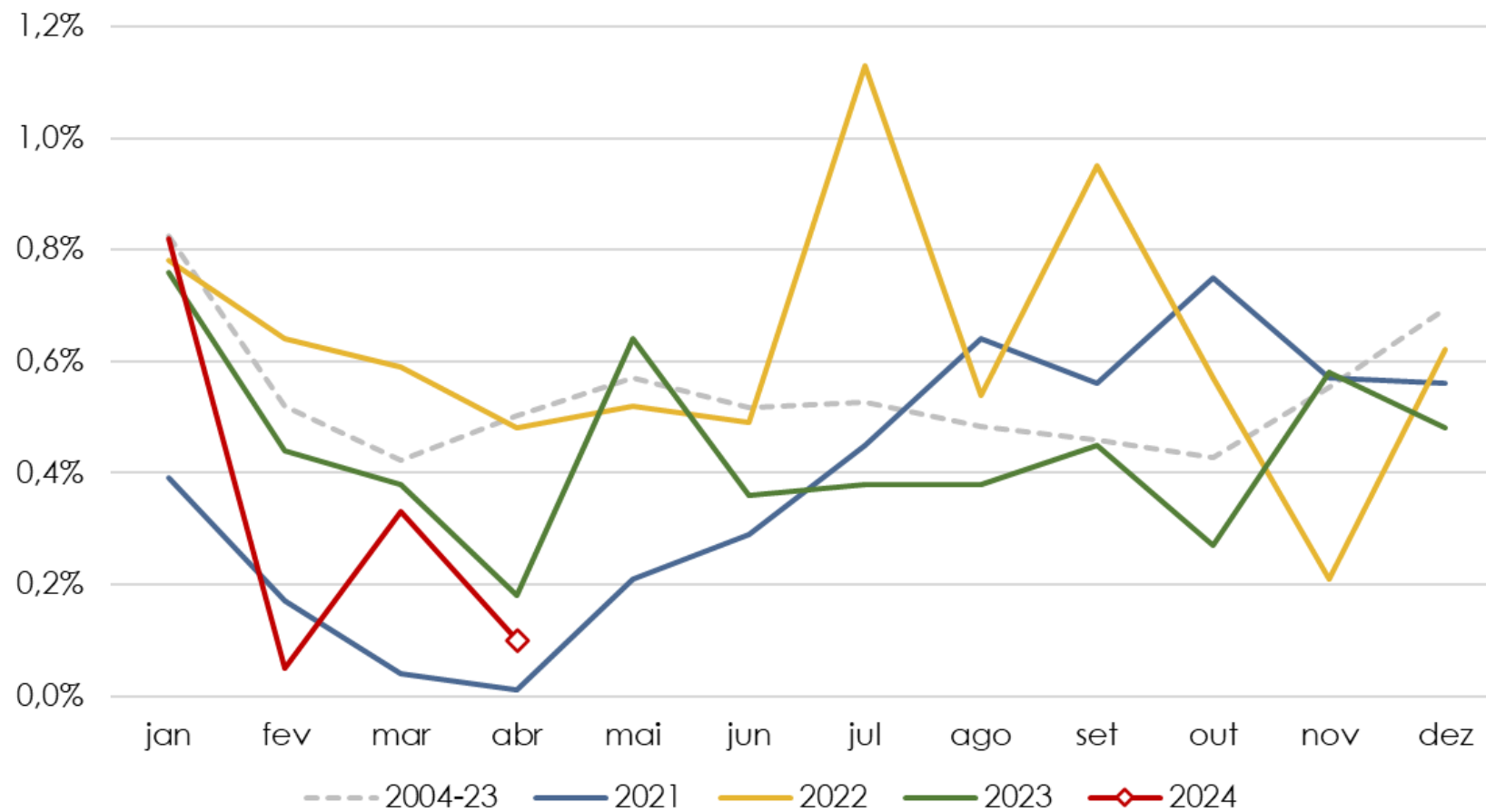
Healthcare and personal care



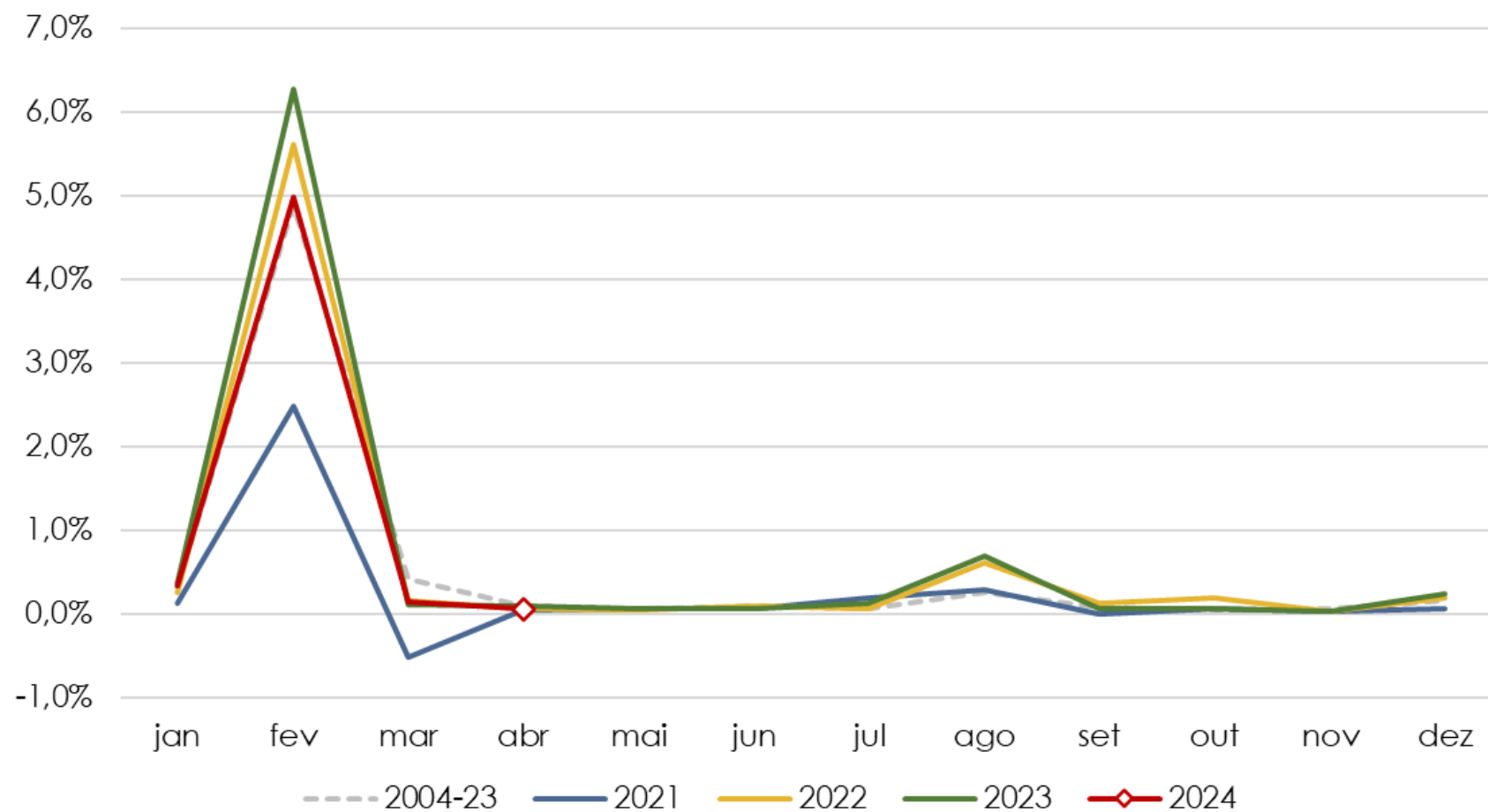
Personal care



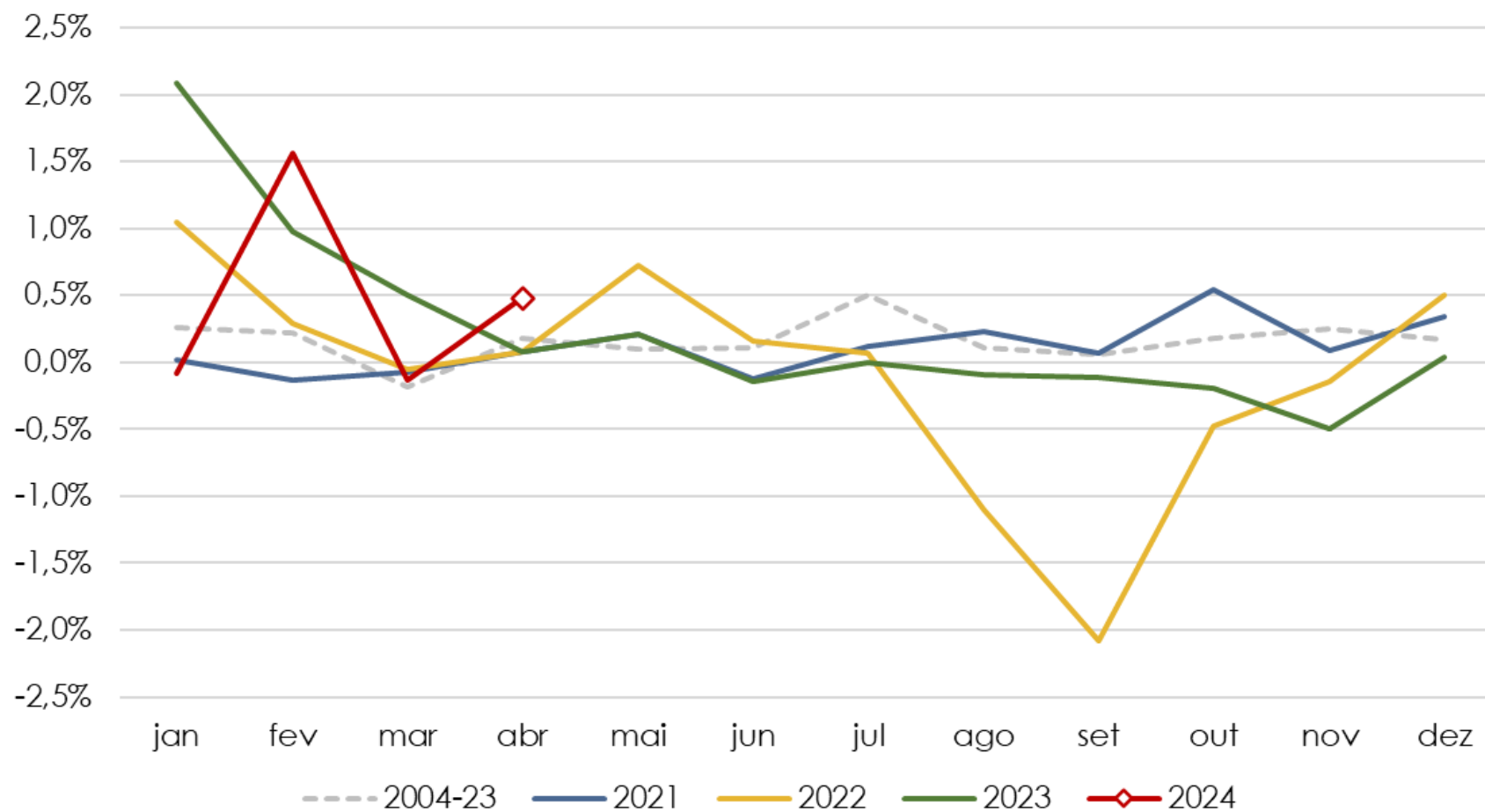
Personal expenses



Education




Communication



 **buyside**brazil

 **buyside**brazil

 contato@buysidebrazil.com

 +55 11 99173 0745

 www.buysidebrazil.com