

# IPCA

May, 2024

# IPCA

	Weight	IPCA-15 Apr-24	IPCA Apr-24	IPCA-15 May-24	IPCA May-24	Forecast	Surprise bps
<b>IPCA (CPI)</b>	<b>100%</b>	<b>0,21%</b>	<b>0,38%</b>	<b>0,44%</b>	<b>0,46%</b>	<b>0,41%</b>	<b>5</b>
<b>Food and beverages</b>	<b>21,5%</b>	<b>0,61%</b>	<b>0,70%</b>	<b>0,26%</b>	<b>0,62%</b>	0,36%	<b>6</b>
Food at home	15,6%	0,74%	0,81%	0,22%	0,66%	0,33%	<b>5</b>
Fresh products	2,8%	3,58%	3,66%	1,16%	1,02%	0,82%	<b>1</b>
Meat	2,4%	-1,43%	-0,97%	-0,72%	-0,04%	-0,40%	<b>1</b>
Milk and dairy	1,8%	0,68%	0,94%	0,75%	1,97%	1,40%	<b>1</b>
Food away from home	5,8%	0,25%	0,39%	0,37%	0,50%	0,45%	0
<b>Housing</b>	<b>15,2%</b>	<b>0,07%</b>	<b>-0,01%</b>	<b>0,25%</b>	<b>0,67%</b>	0,46%	<b>3</b>
Residential electricity	4,0%	-0,07%	-0,46%	0,17%	0,94%	0,35%	<b>2</b>
<b>Household furnishings and supplies</b>	<b>3,7%</b>	<b>0,03%</b>	<b>-0,26%</b>	<b>-0,44%</b>	<b>-0,53%</b>	-0,13%	-1
<b>Apparel</b>	<b>4,7%</b>	<b>0,41%</b>	<b>0,55%</b>	<b>0,66%</b>	<b>0,50%</b>	0,65%	-1
<b>Transportation</b>	<b>20,5%</b>	<b>-0,49%</b>	<b>0,14%</b>	<b>0,77%</b>	<b>0,44%</b>	0,45%	0
Airfares	0,6%	-12,20%	-12,09%	6,04%	5,91%	6,04%	0
Gasoline	5,1%	-0,11%	1,50%	1,90%	0,45%	1,00%	<b>-3</b>
<b>Health and personal care</b>	<b>13,5%</b>	<b>0,78%</b>	<b>1,16%</b>	<b>1,07%</b>	<b>0,69%</b>	0,91%	<b>-3</b>
Personal hygiene	4,0%	0,29%	0,34%	0,87%	1,04%	1,50%	<b>-2</b>
<b>Personal expenses</b>	<b>10,1%</b>	<b>0,40%</b>	<b>0,10%</b>	<b>0,18%</b>	<b>0,22%</b>	0,19%	0
<b>Education</b>	<b>6,1%</b>	<b>0,05%</b>	<b>0,05%</b>	<b>0,11%</b>	<b>0,09%</b>	0,09%	0
<b>Communication</b>	<b>4,8%</b>	<b>0,17%</b>	<b>0,48%</b>	<b>0,18%</b>	<b>0,14%</b>	-0,06%	<b>1</b>

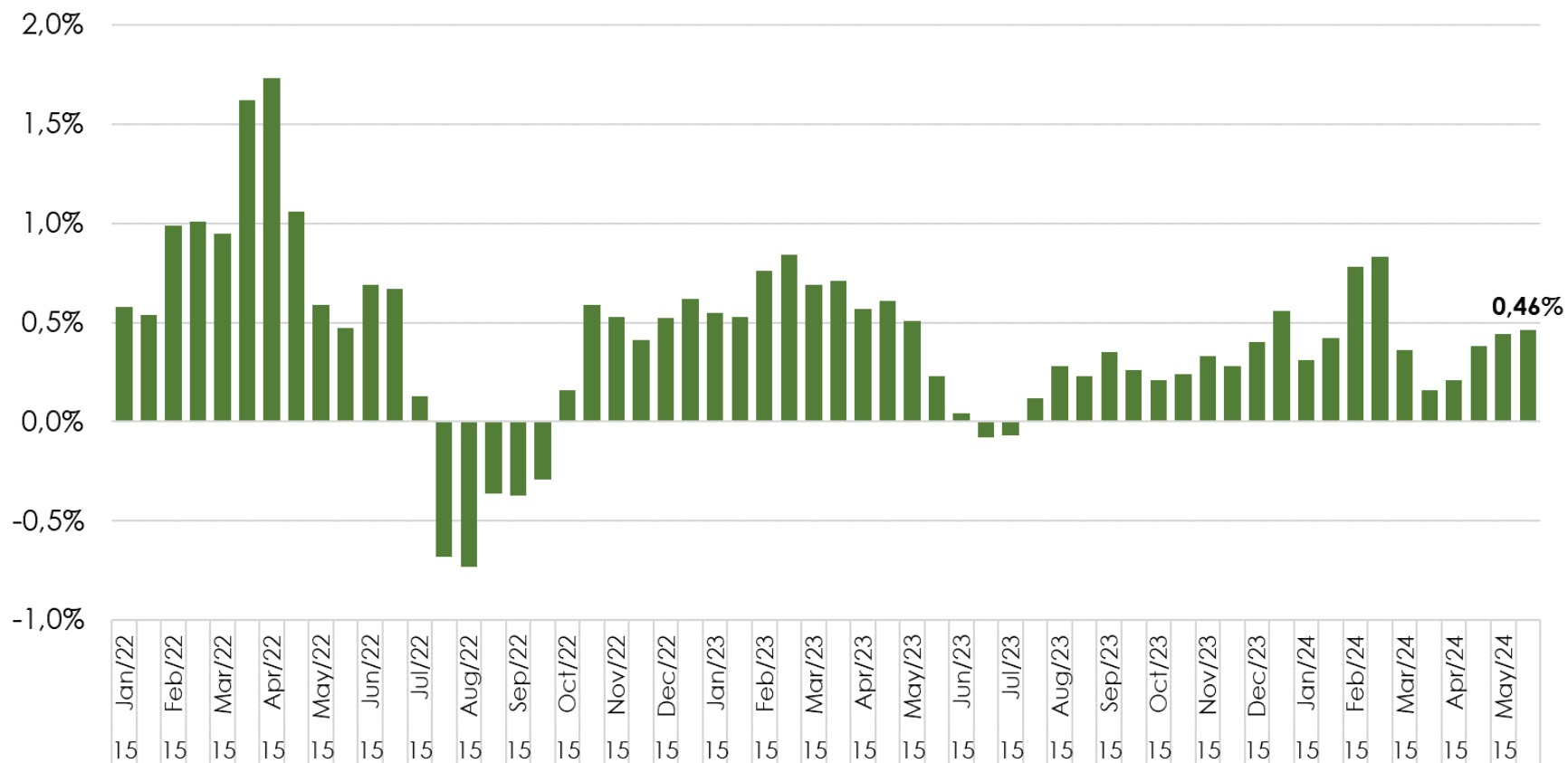


# IPCA

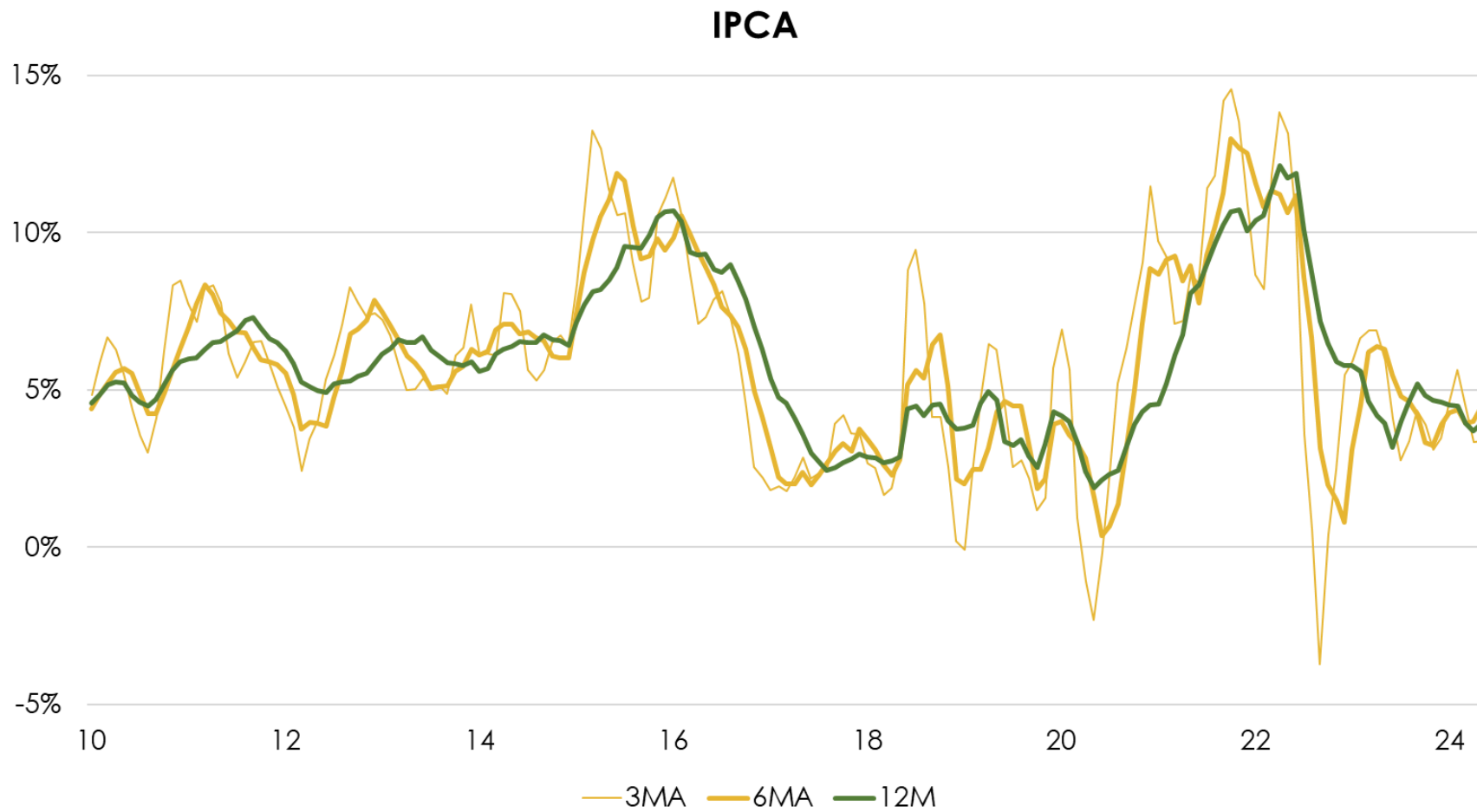
	Weight	IPCA-15 Apr-24	IPCA Apr-24	IPCA-15 May-24	IPCA May-24	Forecast	Surprise bps
<b>IPCA (CPI)</b>	<b>100%</b>	<b>0,21%</b>	<b>0,38%</b>	<b>0,44%</b>	<b>0,46%</b>	<b>0,41%</b>	<b>5</b>
<b>Free prices</b>	73,7%	<b>0,19%</b>	<b>0,26%</b>	<b>0,30%</b>	<b>0,42%</b>	0,34%	<b>6</b>
<b>Administered prices</b>	26,3%	<b>0,26%</b>	<b>0,73%</b>	<b>0,85%</b>	<b>0,56%</b>	0,61%	<b>-1</b>
<b>Services</b>	35,8%	<b>0,05%</b>	<b>0,06%</b>	<b>0,35%</b>	<b>0,40%</b>	0,31%	<b>3</b>
Underlying services	21,1%	0,38%	0,33%	0,31%	0,41%	0,32%	<b>2</b>
<b>Industrial goods</b>	23,3%	<b>0,05%</b>	<b>0,21%</b>	<b>0,33%</b>	<b>0,29%</b>	0,30%	0
Durable	9,7%	-0,12%	-0,14%	-0,22%	0,01%	-0,09%	<b>1</b>
Semi-durable	6,1%	0,22%	0,35%	0,45%	0,31%	0,45%	<b>-1</b>
<b>Core average</b>	-	<b>0,19%</b>	<b>0,26%</b>	<b>0,31%</b>	<b>0,39%</b>	0,31%	
EX0	59,0%	0,06%	0,06%	0,33%	0,36%	0,30%	<b>4</b>
EX3	36,9%	0,29%	0,29%	0,28%	0,37%	0,32%	<b>2</b>
MS	-	0,29%	0,31%	0,30%	0,40%	0,34%	
DP	-	0,22%	0,30%	0,31%	0,36%	0,26%	
P55	-	0,10%	0,34%	0,34%	0,45%	0,35%	



## IPCA (MoM)

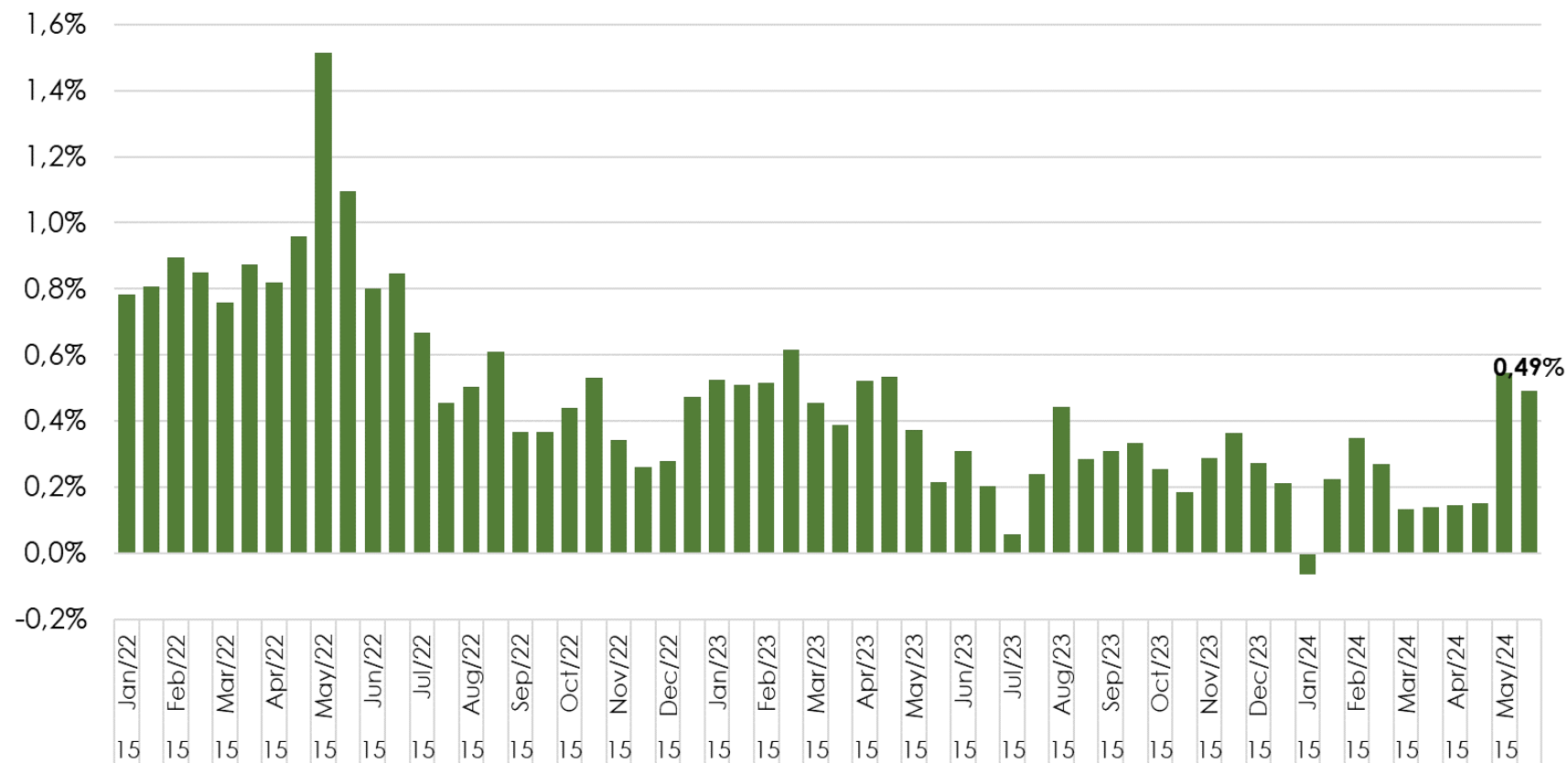


# IPCA

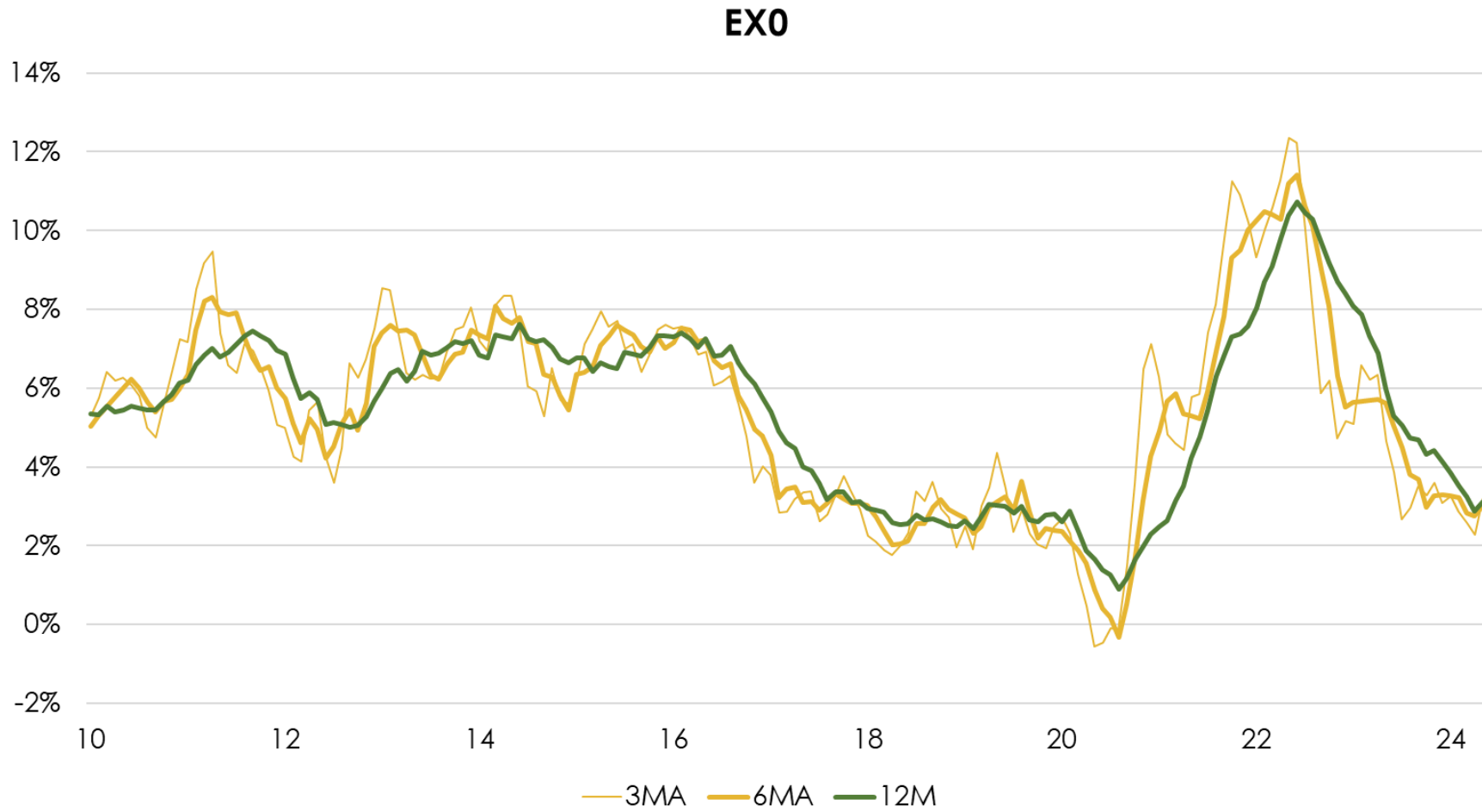


# EX0 Core

## EX0 (MoM SA)

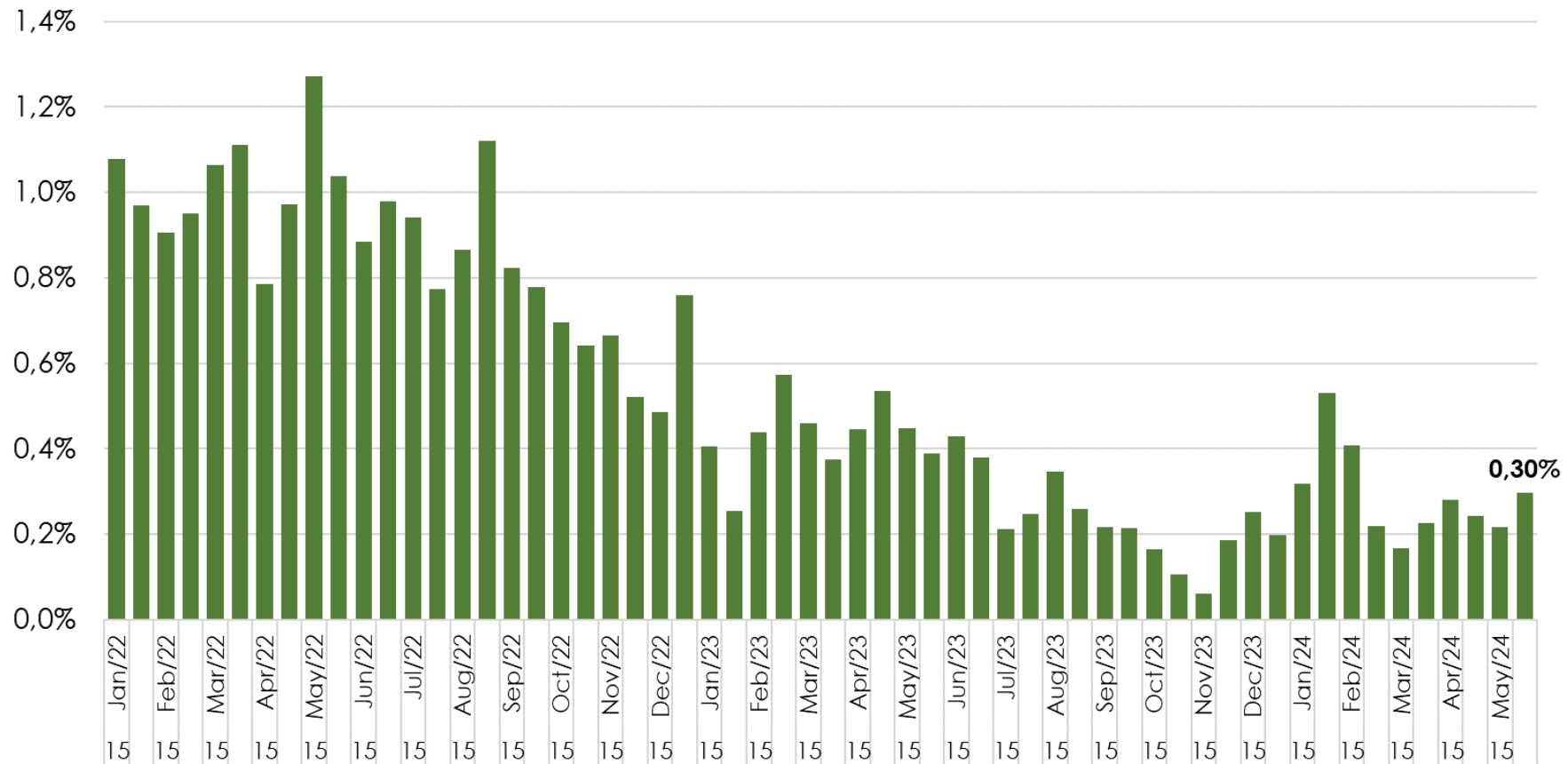


# EX0 Core



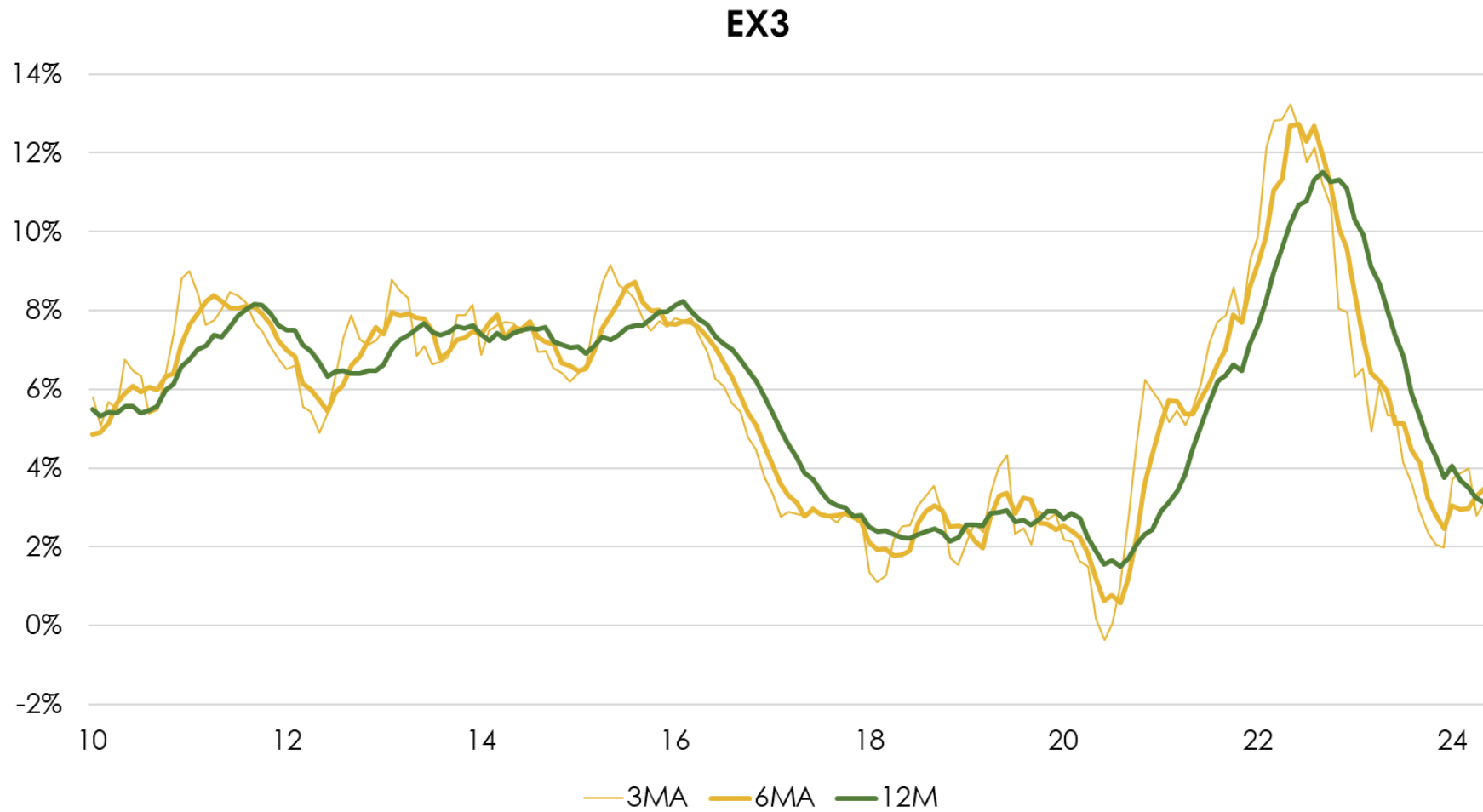
# EX3 Core

## EX3 (MoM SA)



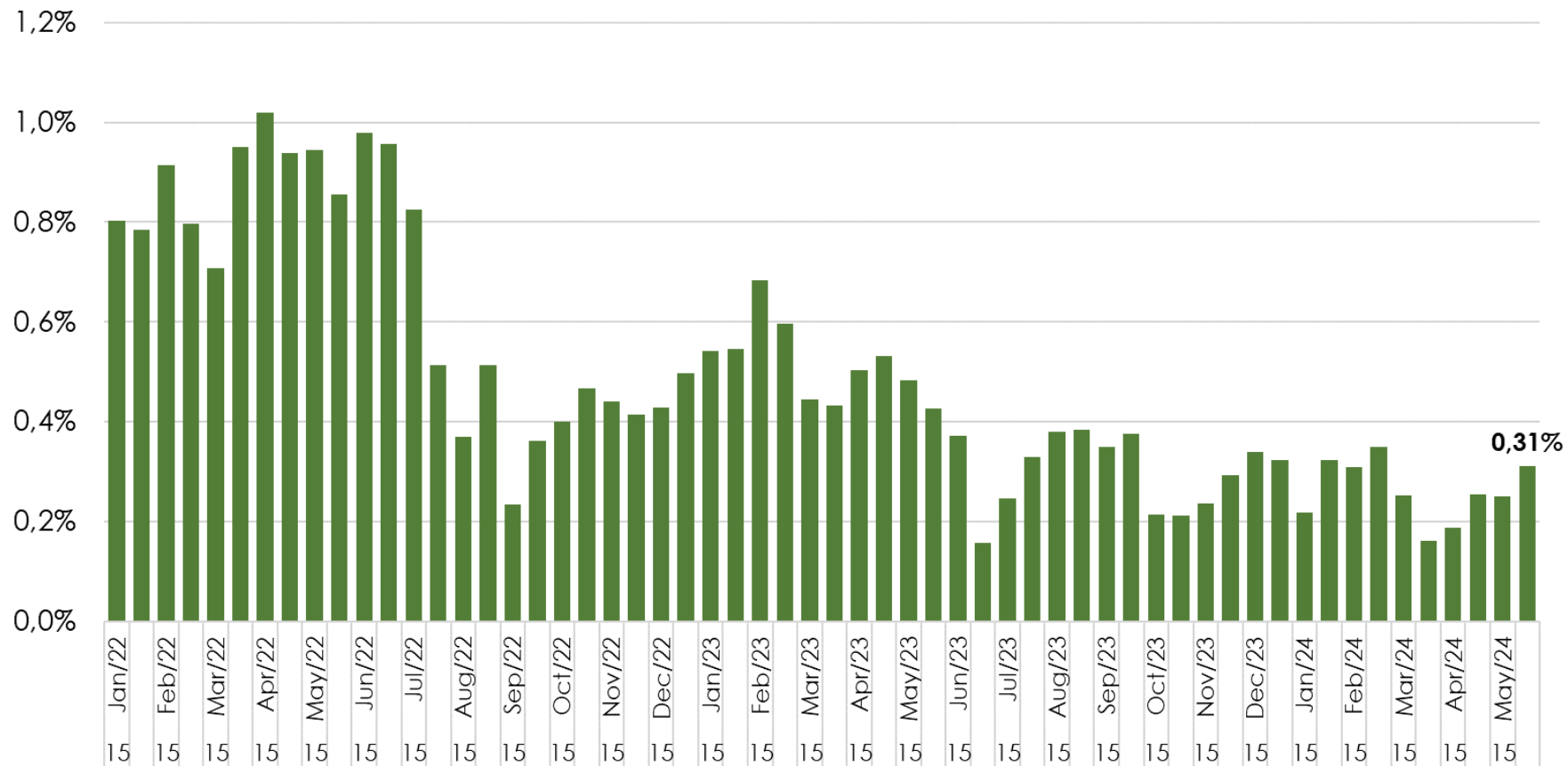


# EX3 Core

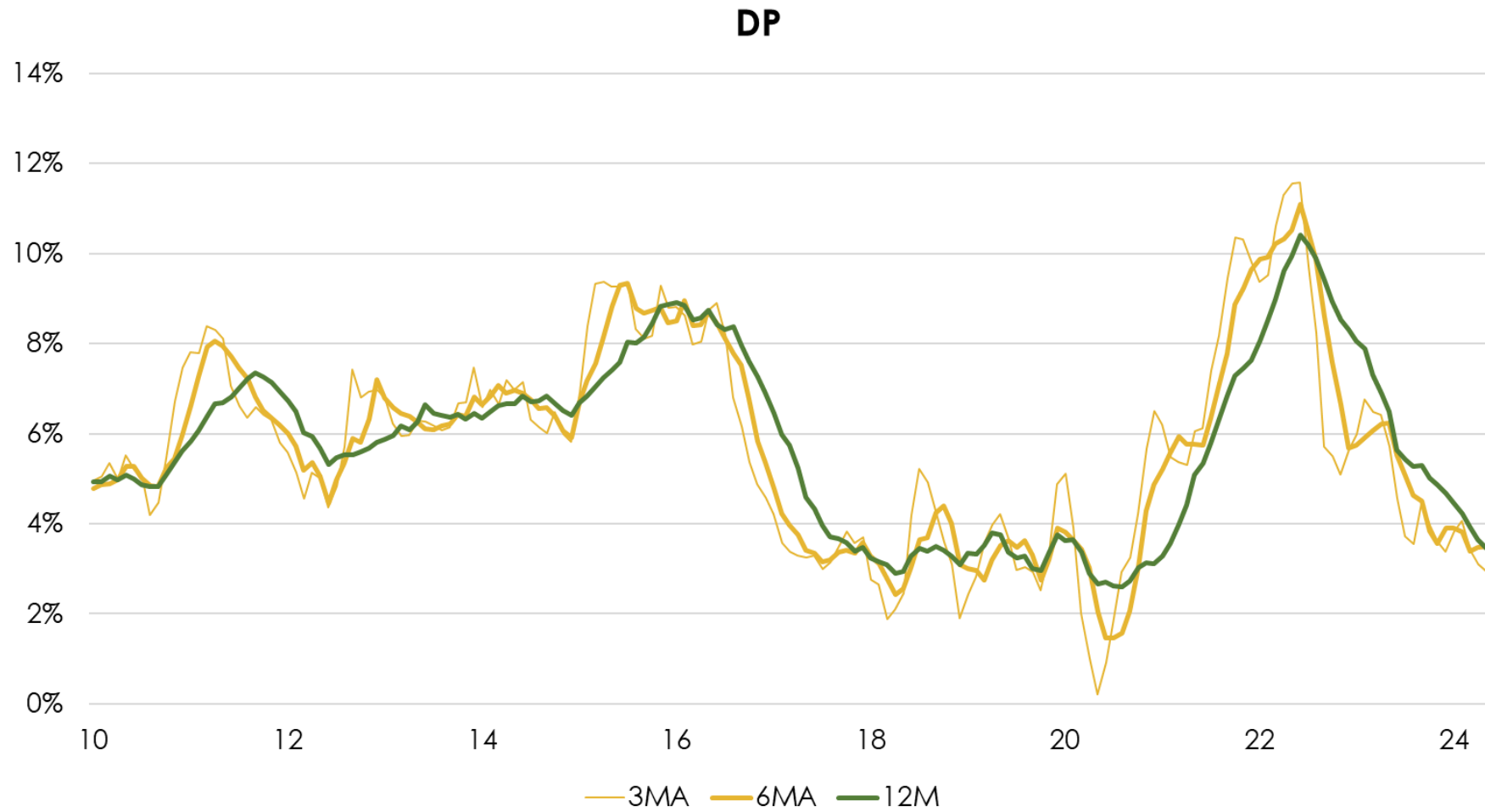


# DP Core

## DP (MoM SA)

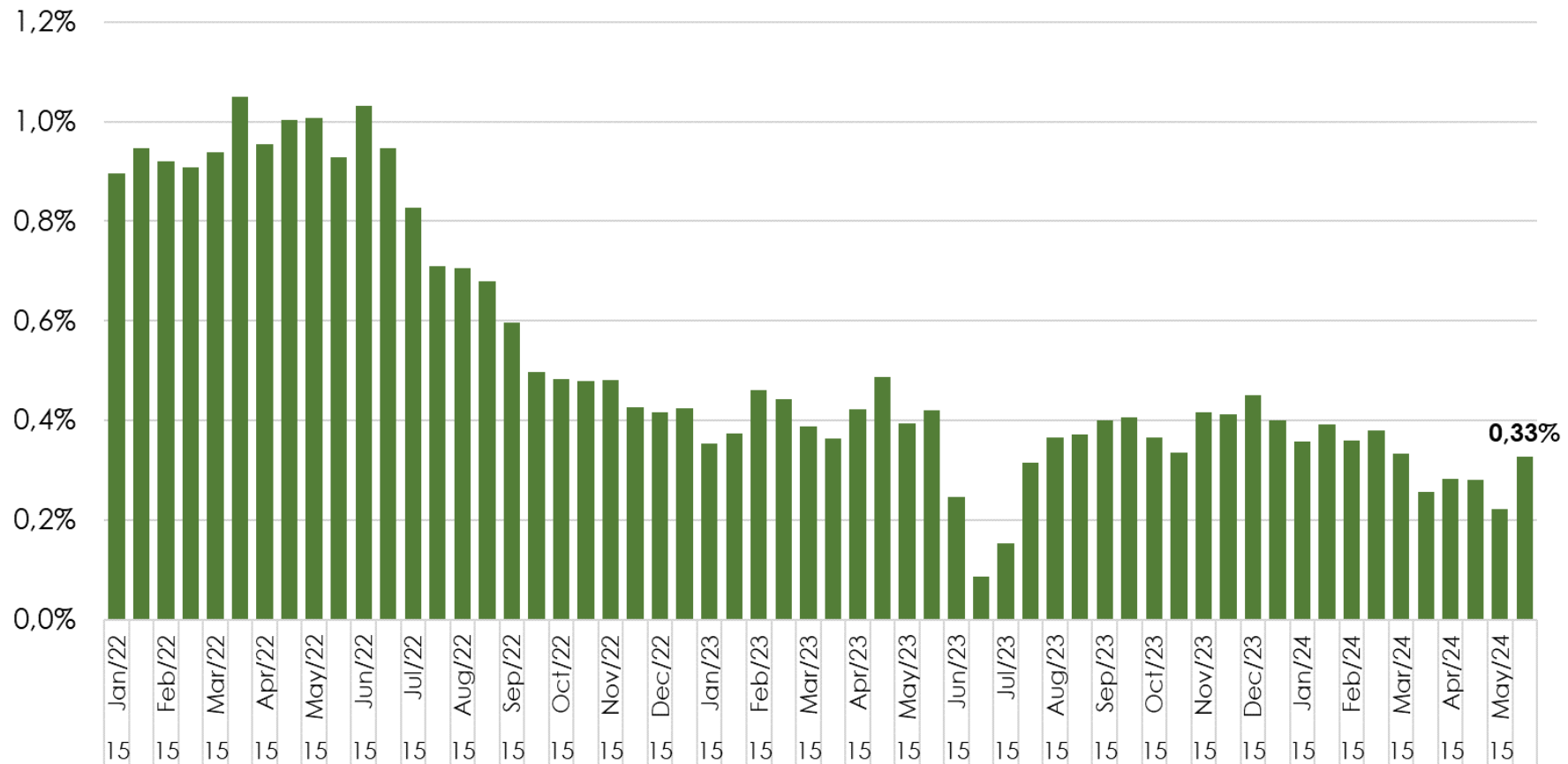


# DP Core

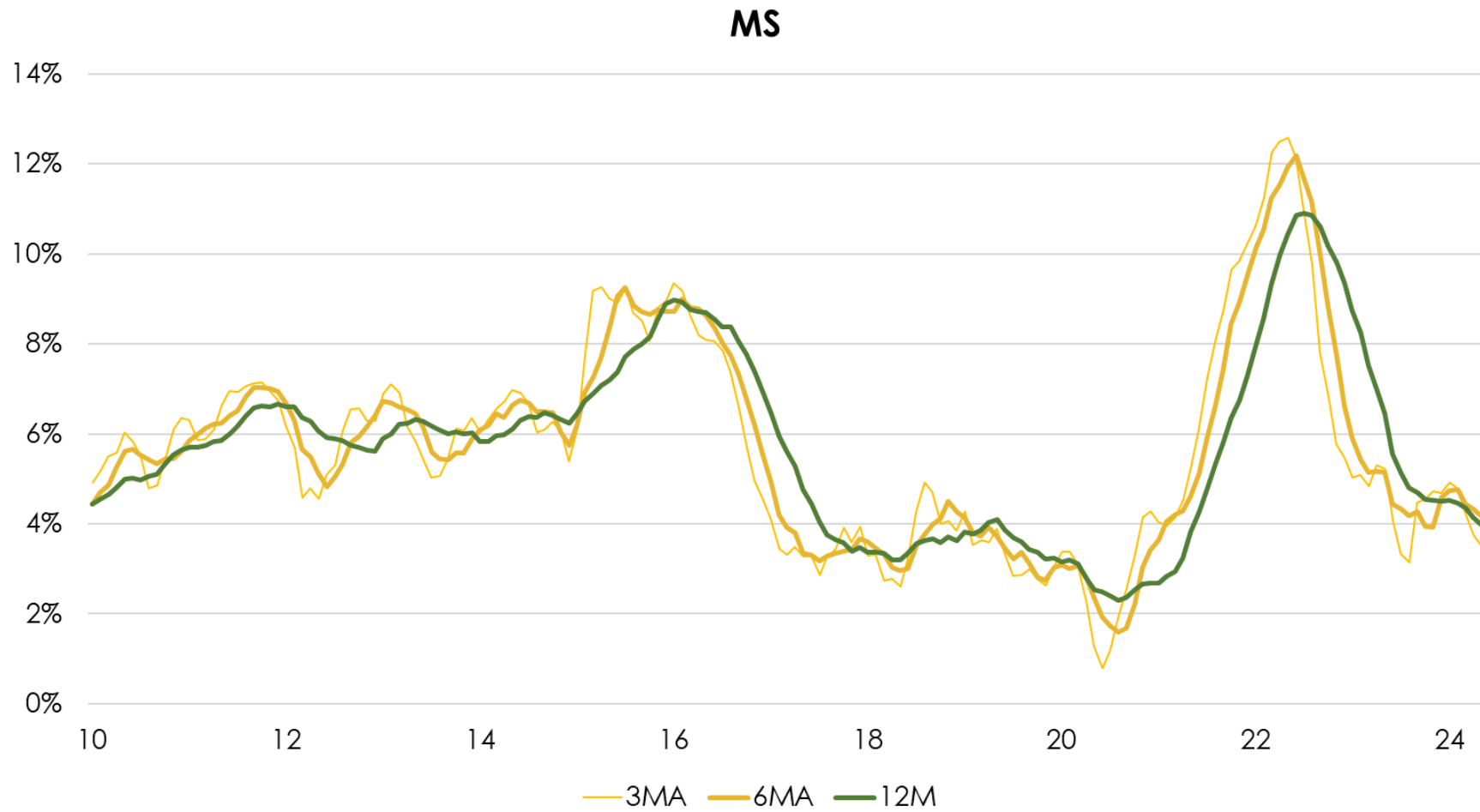


# MS Core

## MS (MoM SA)

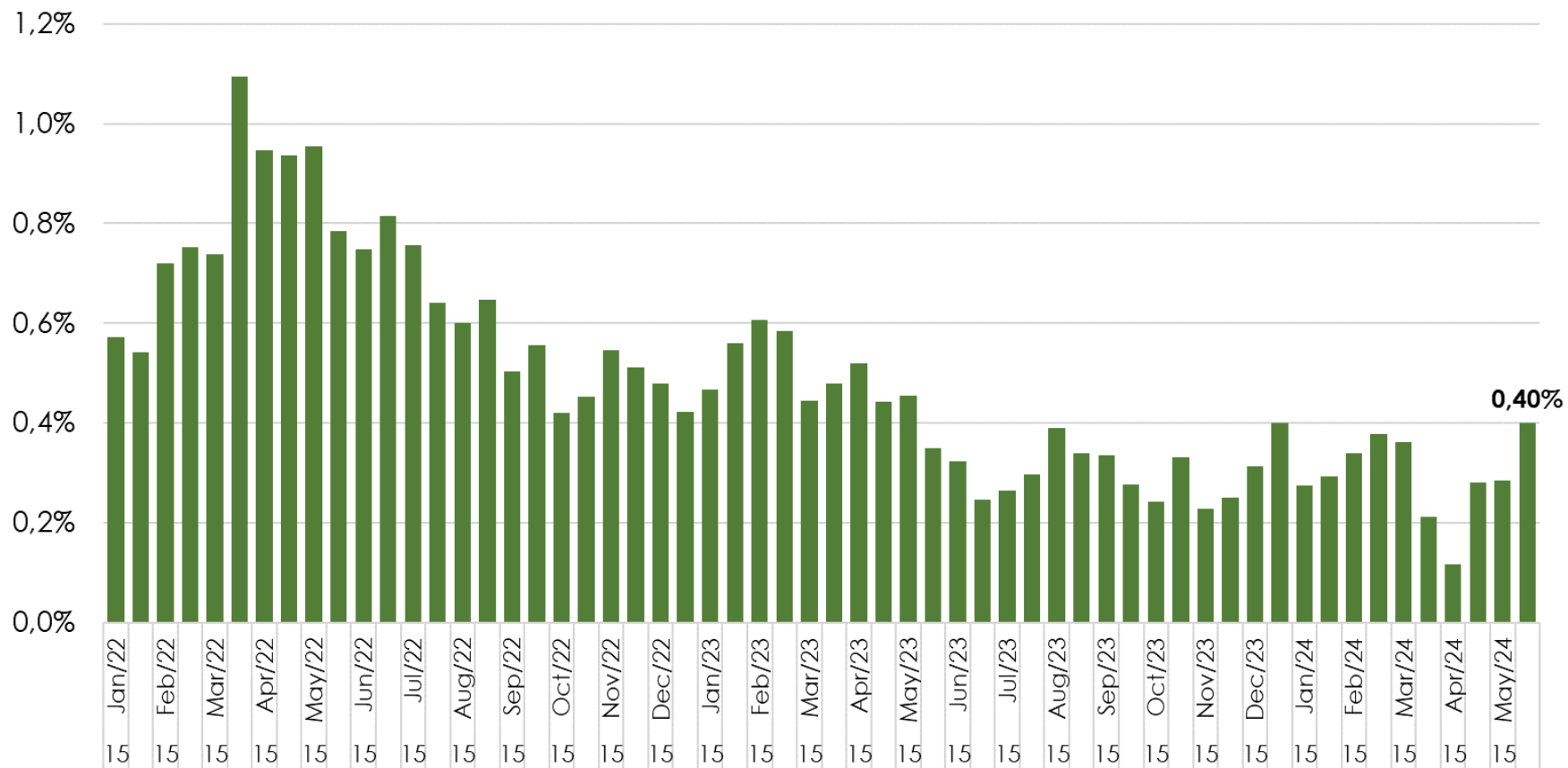


# MS Core

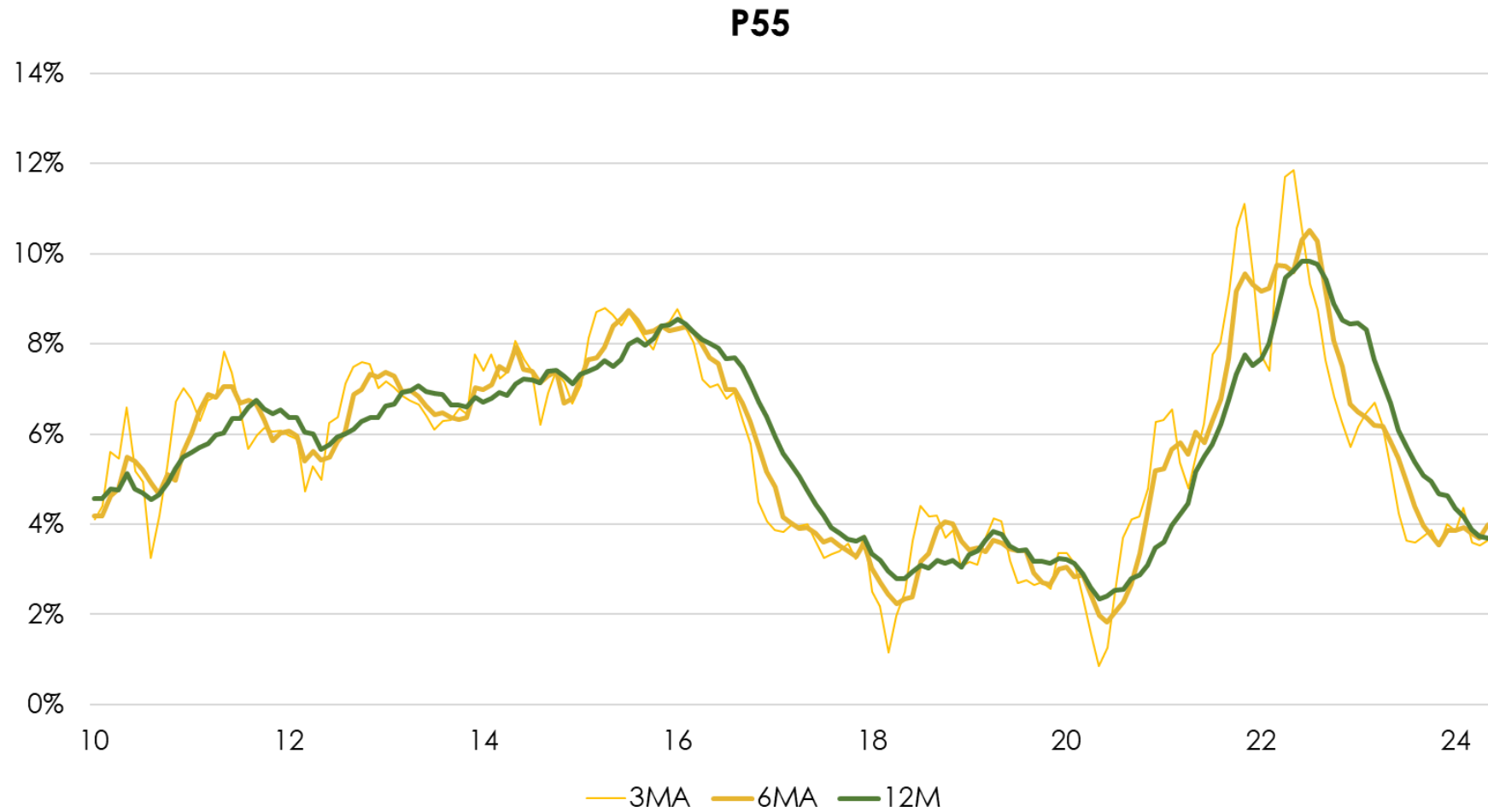


# P55 Core

## P55 (MoM SA)

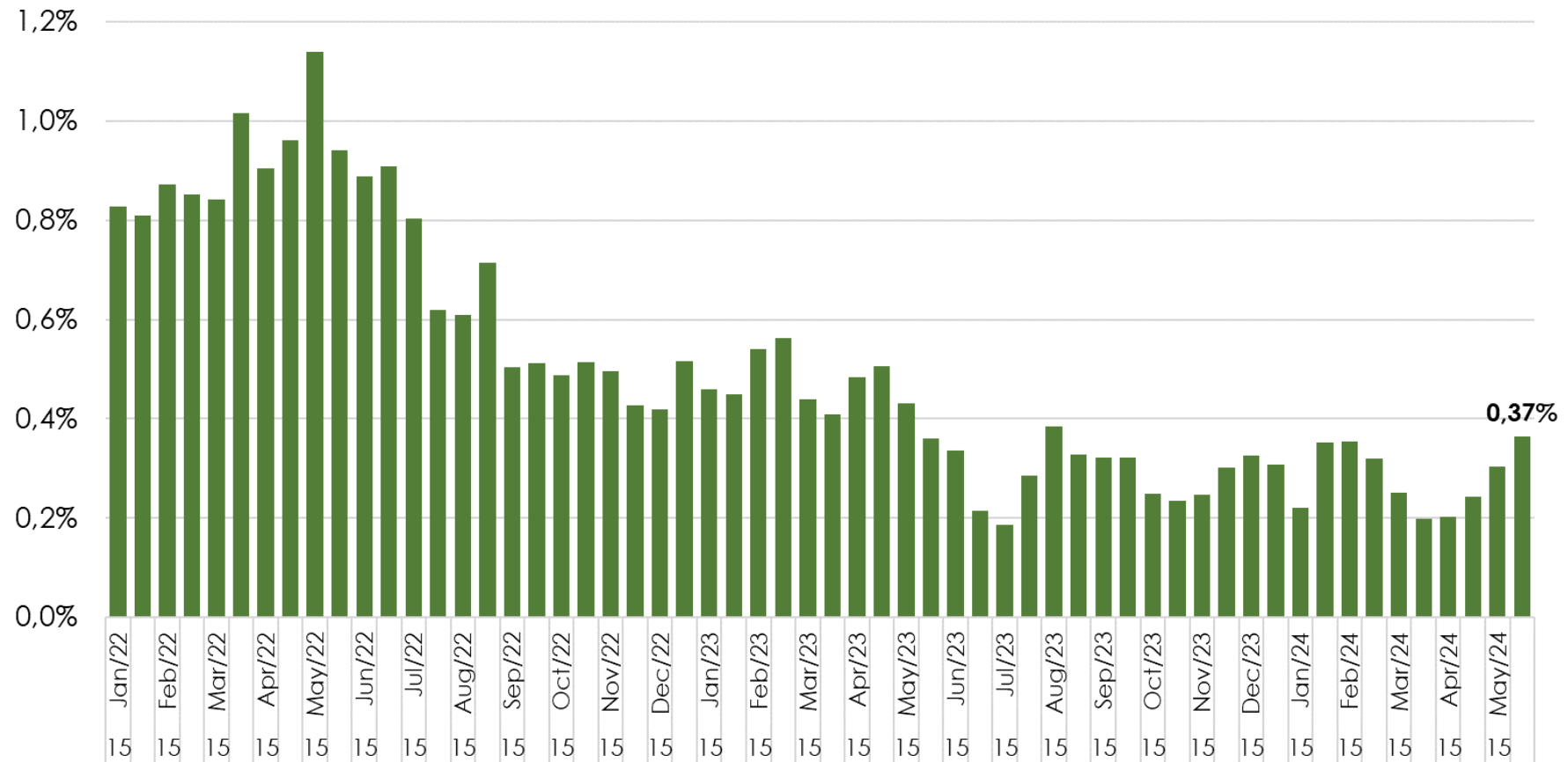


# P55 Core



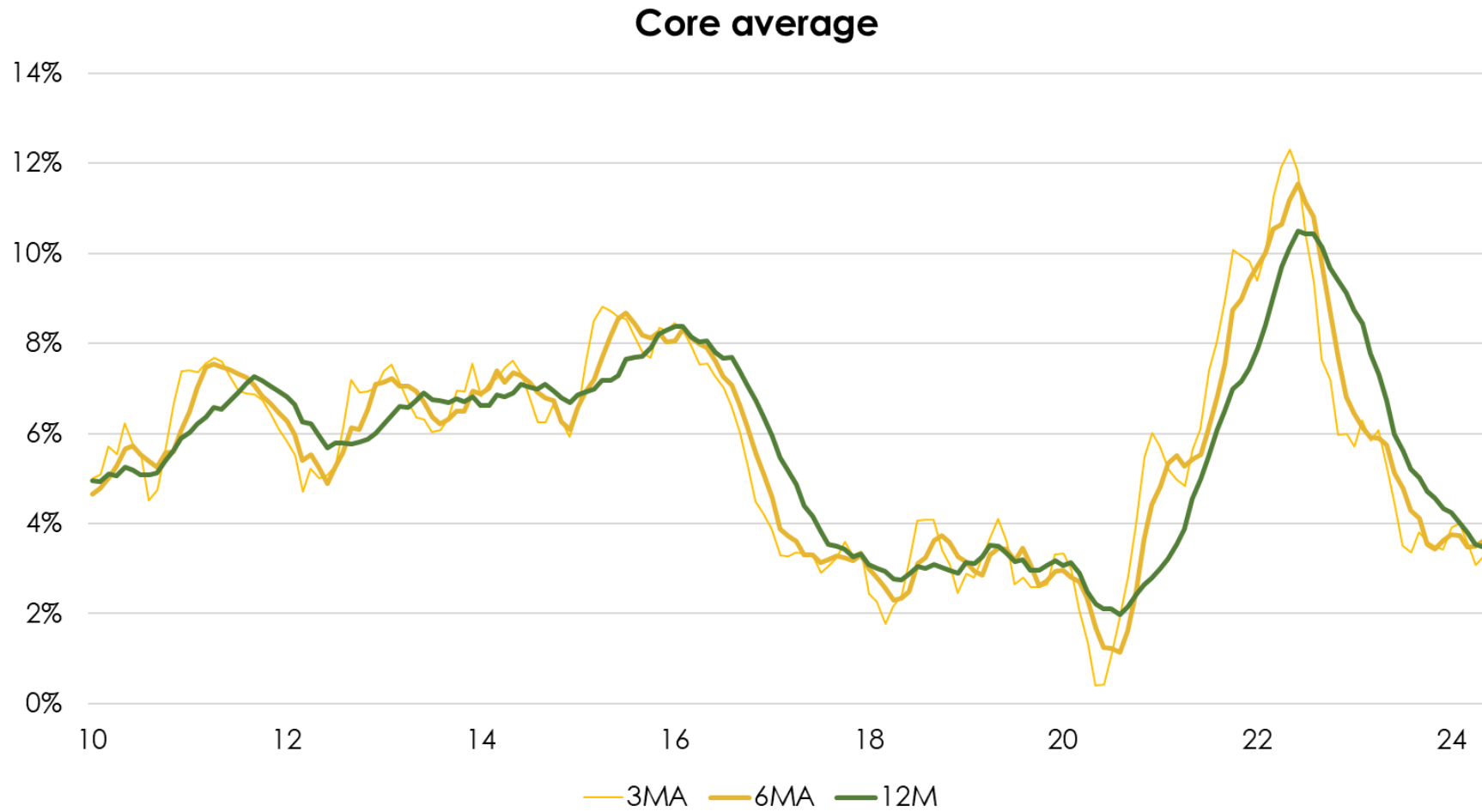
# Core average

Core average (MoM SA)



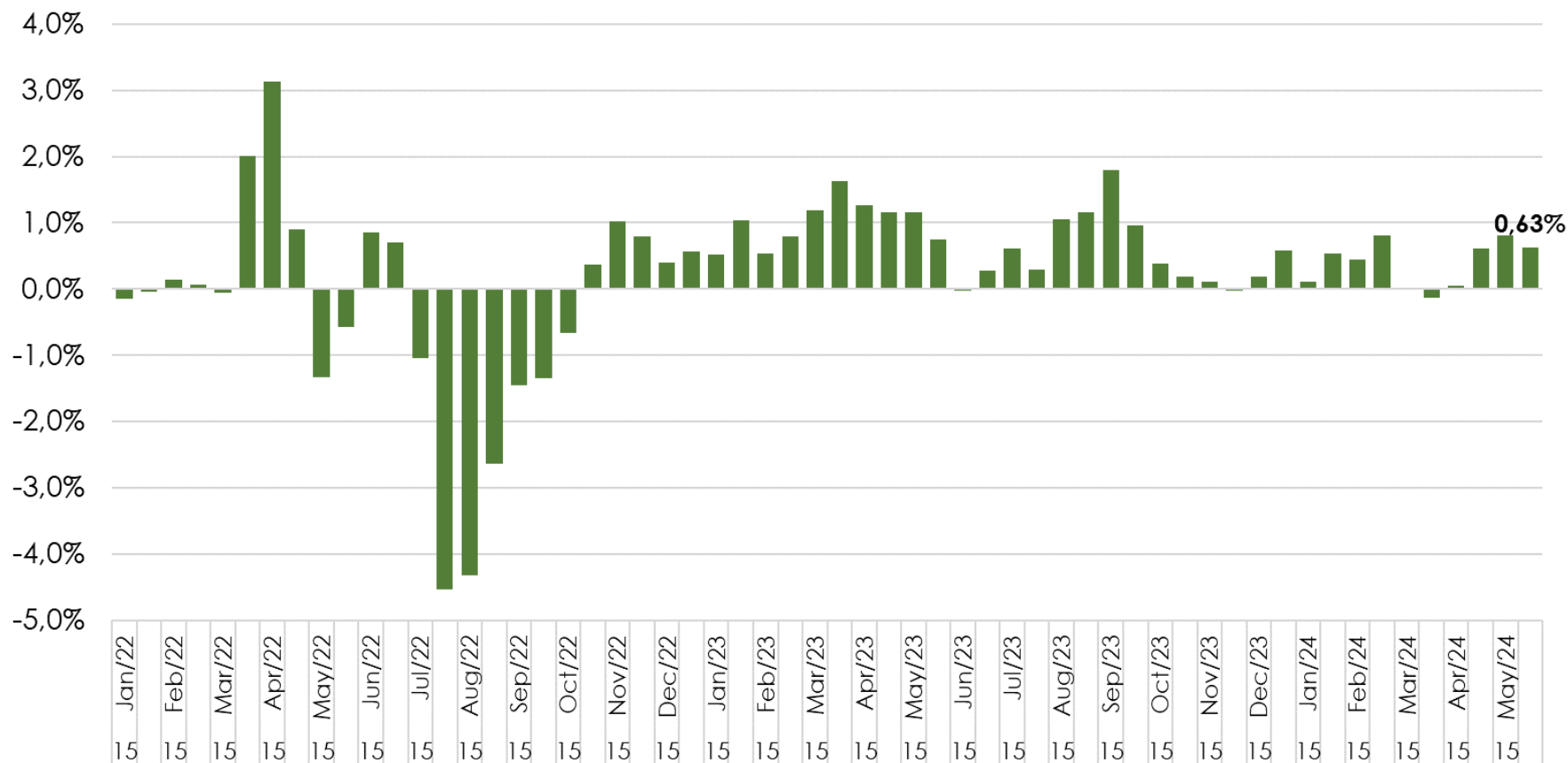


# Core average

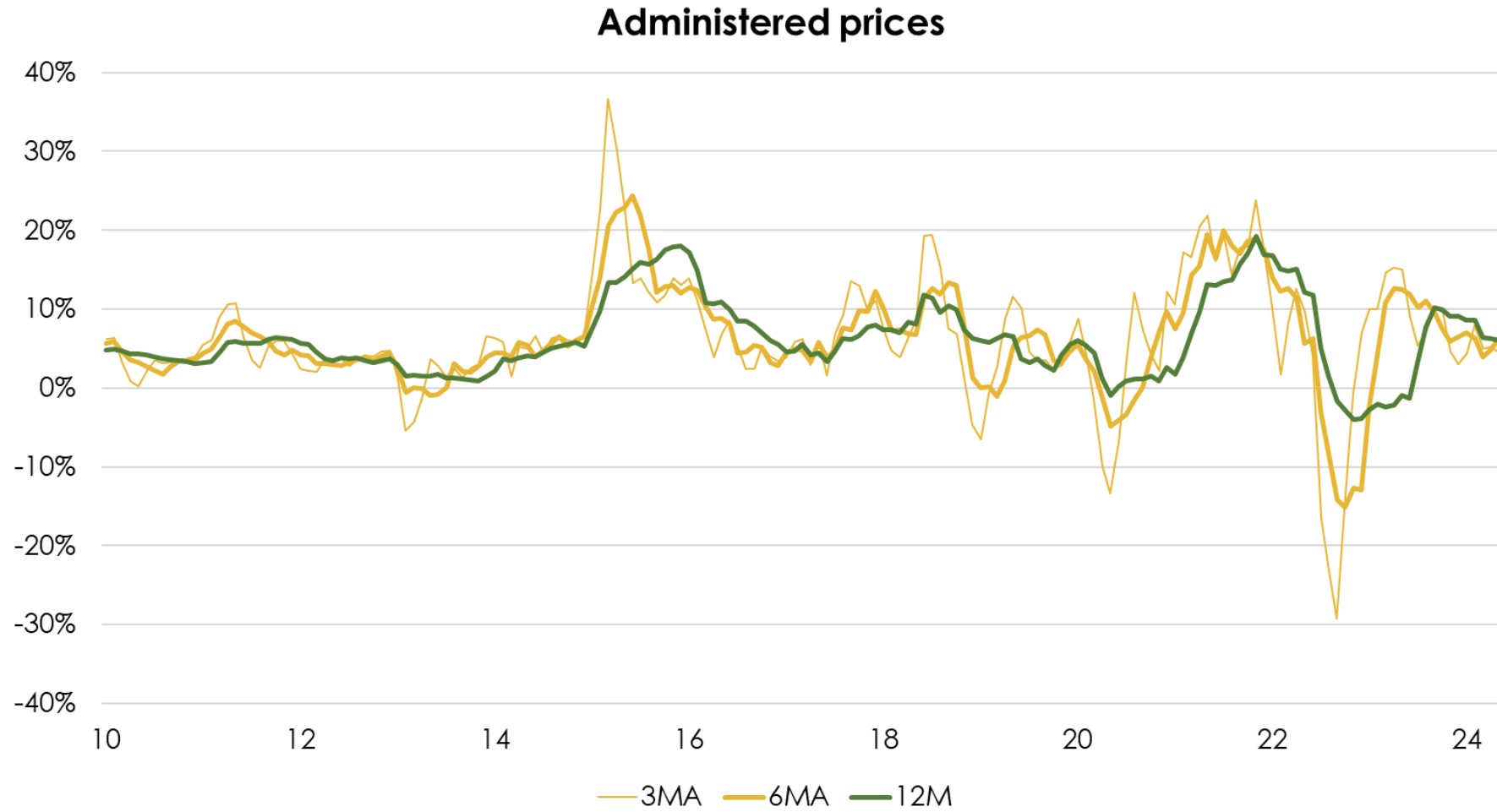


# Administered prices

## Administered prices (MoM SA)

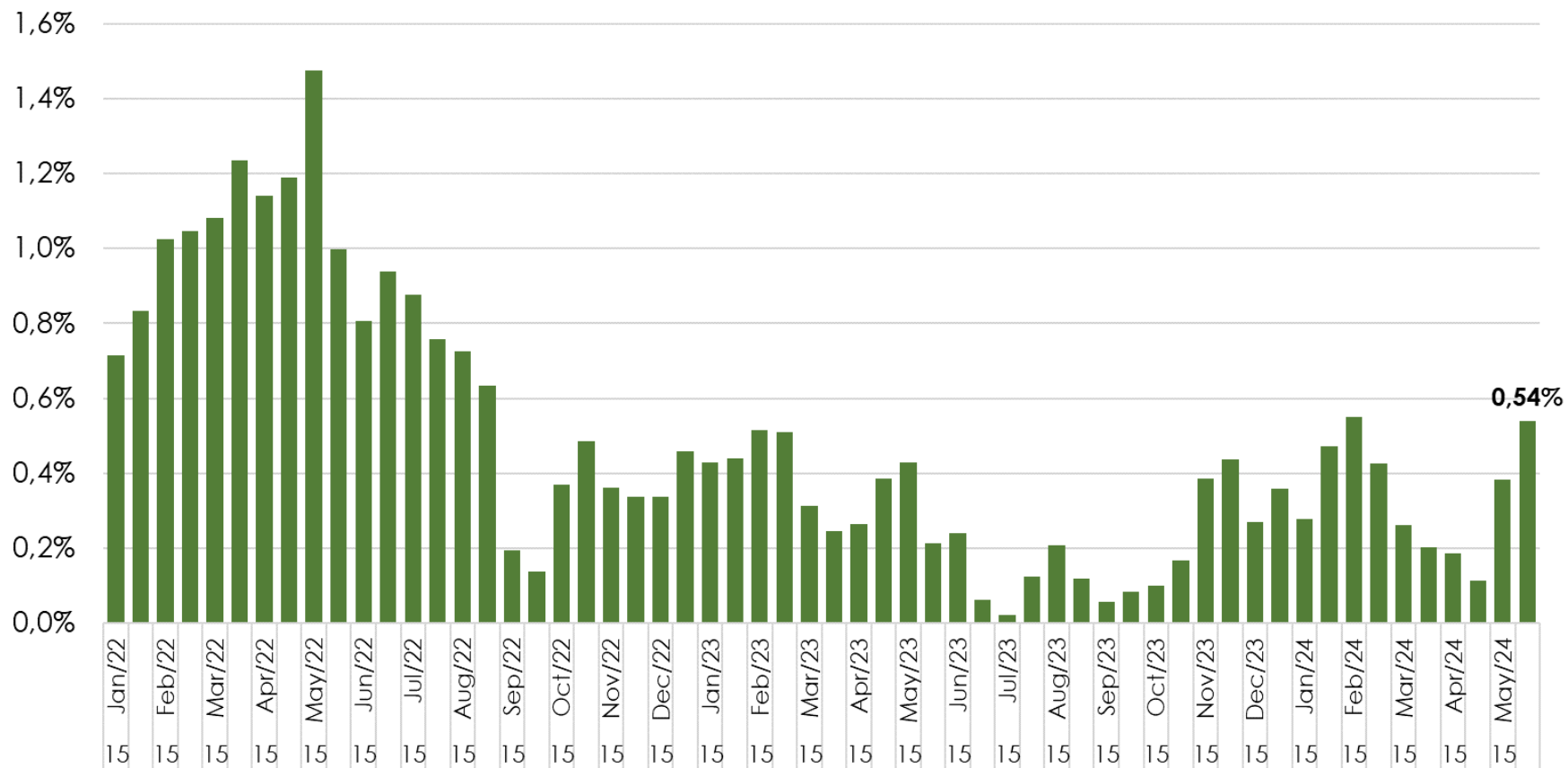


# Administered prices



# Free prices

## Free prices (MoM SA)

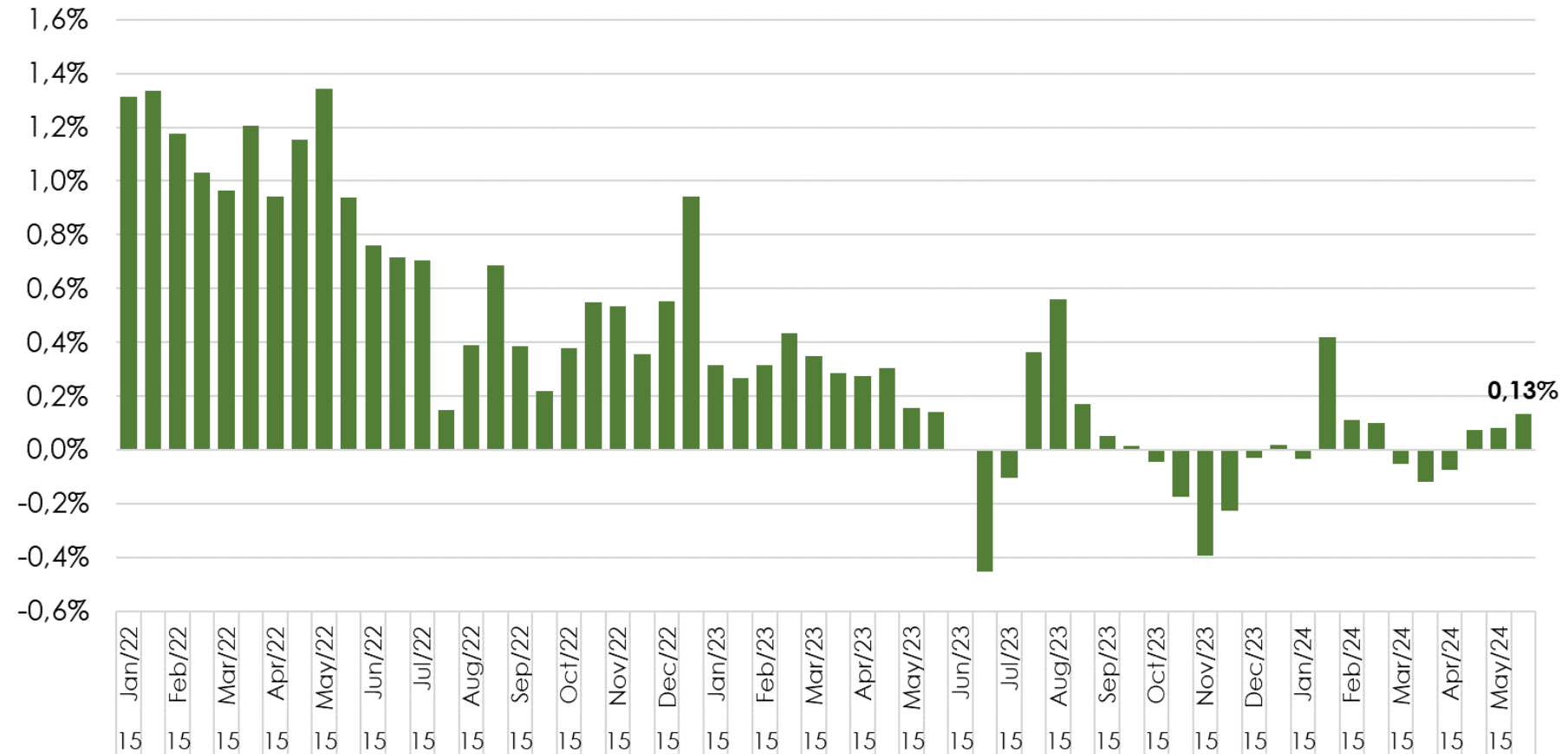


# Free prices



# Industrial goods

Industrial goods (MoM SA)

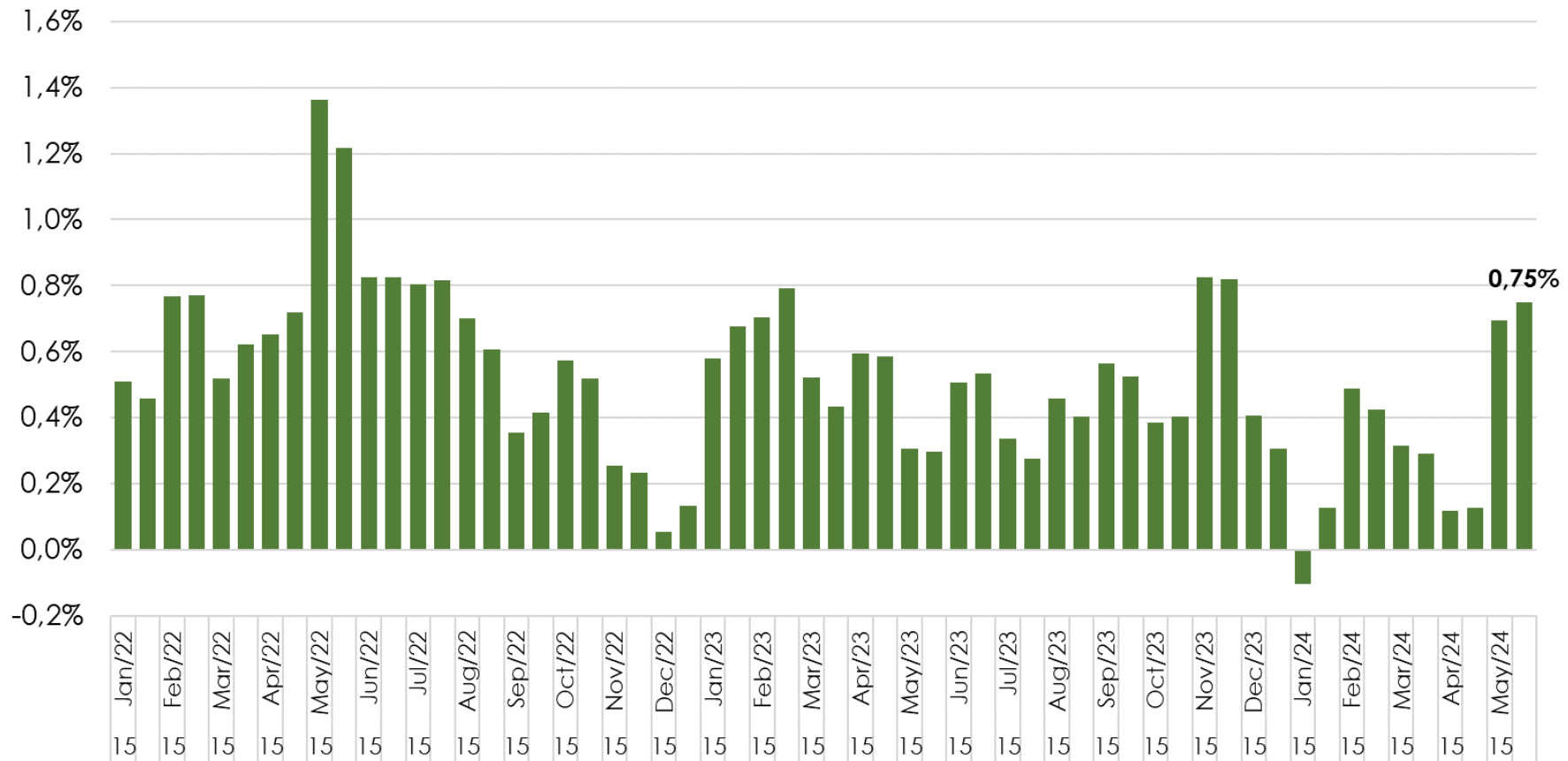


# Industrial goods



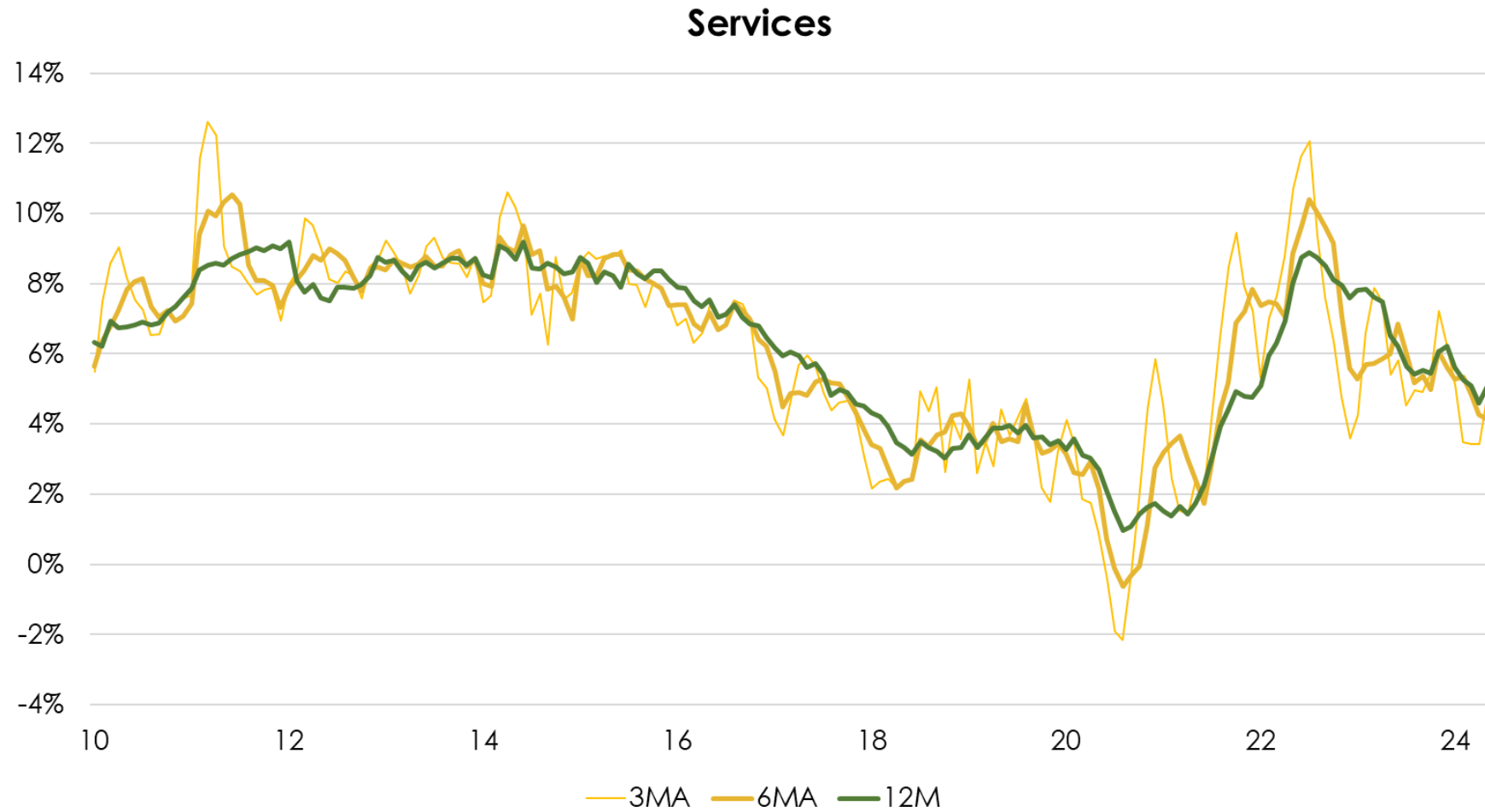
# Services

## Services (MoM SA)



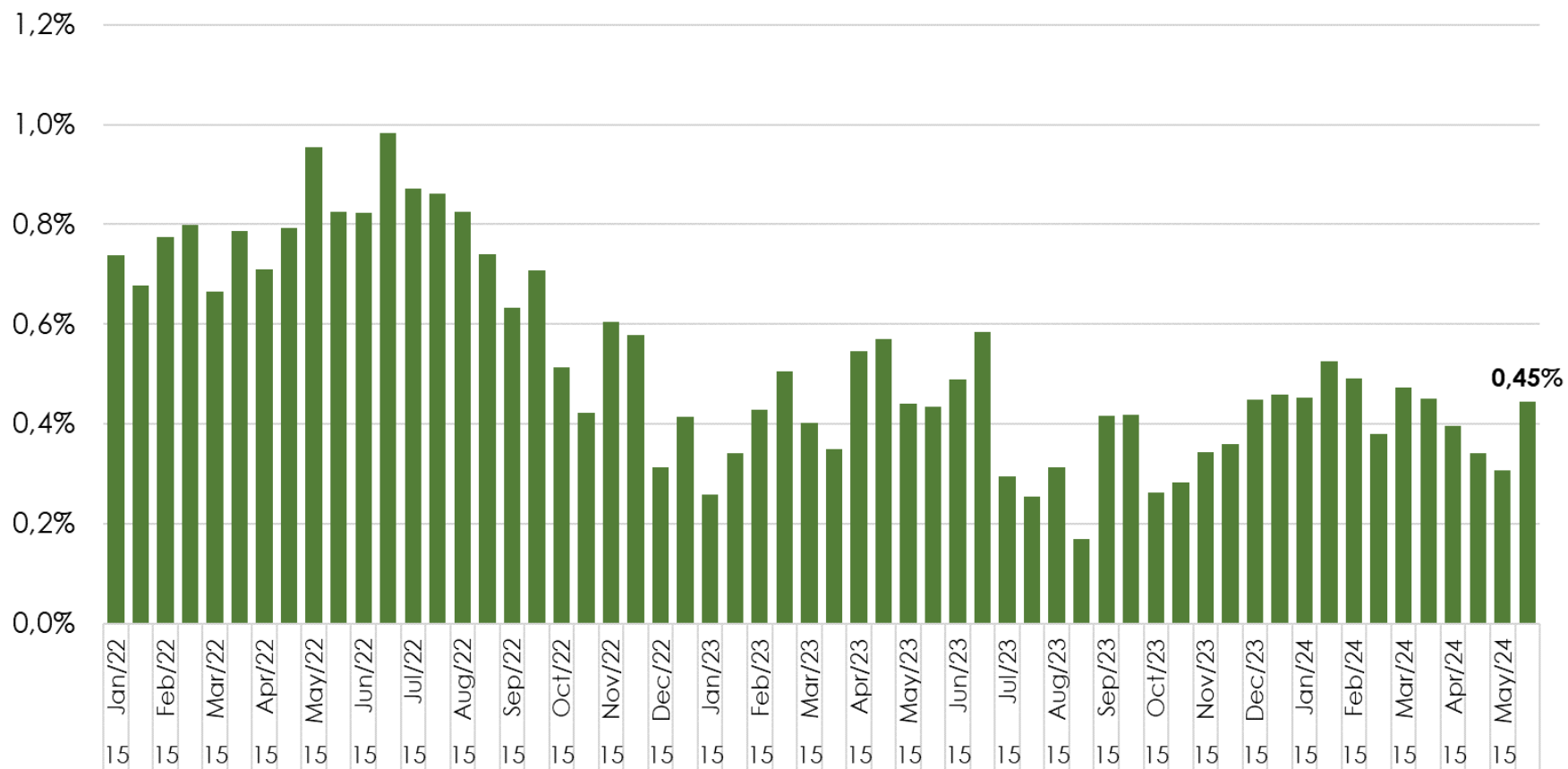


# Services

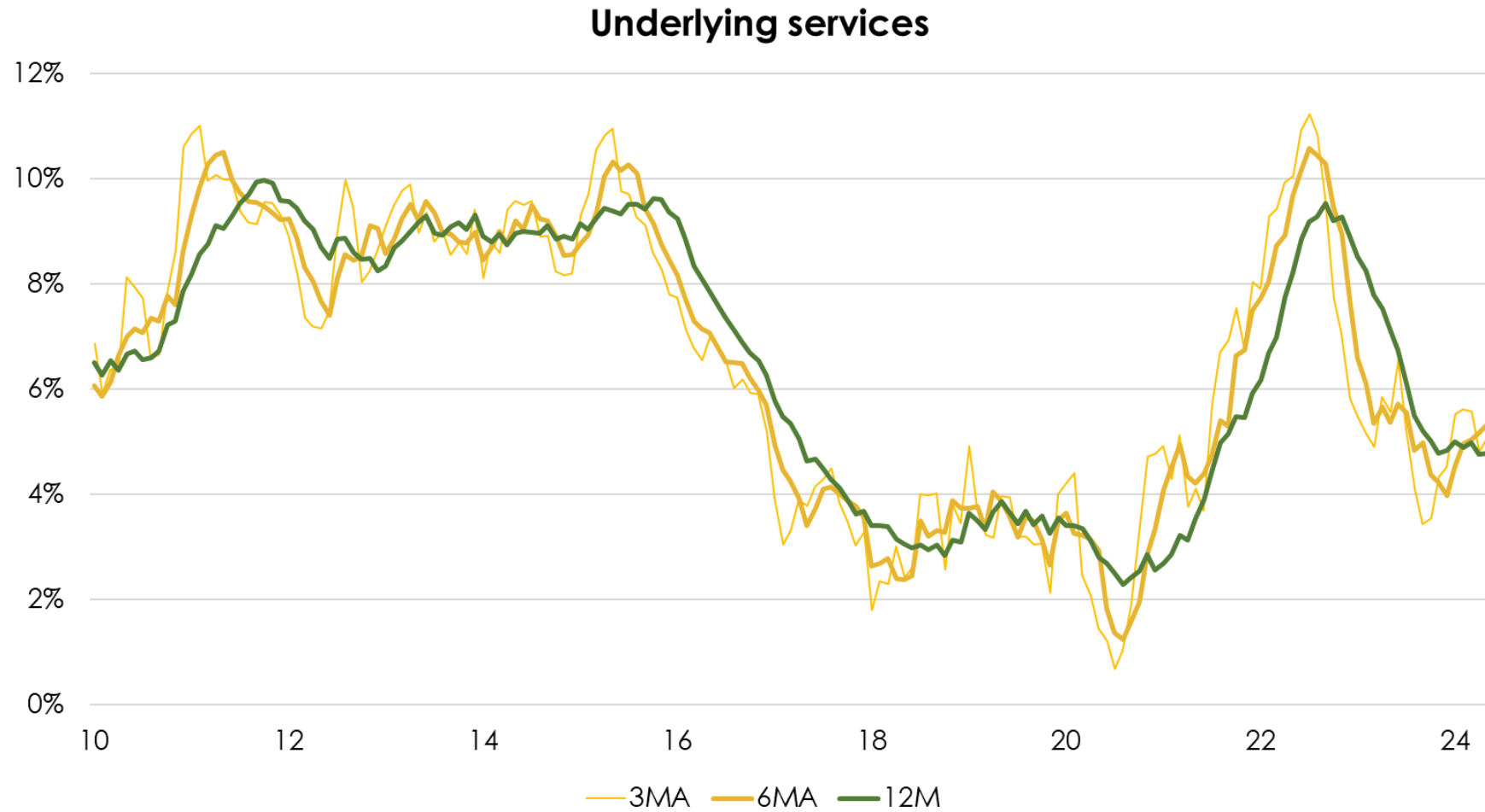


# Underlying Services

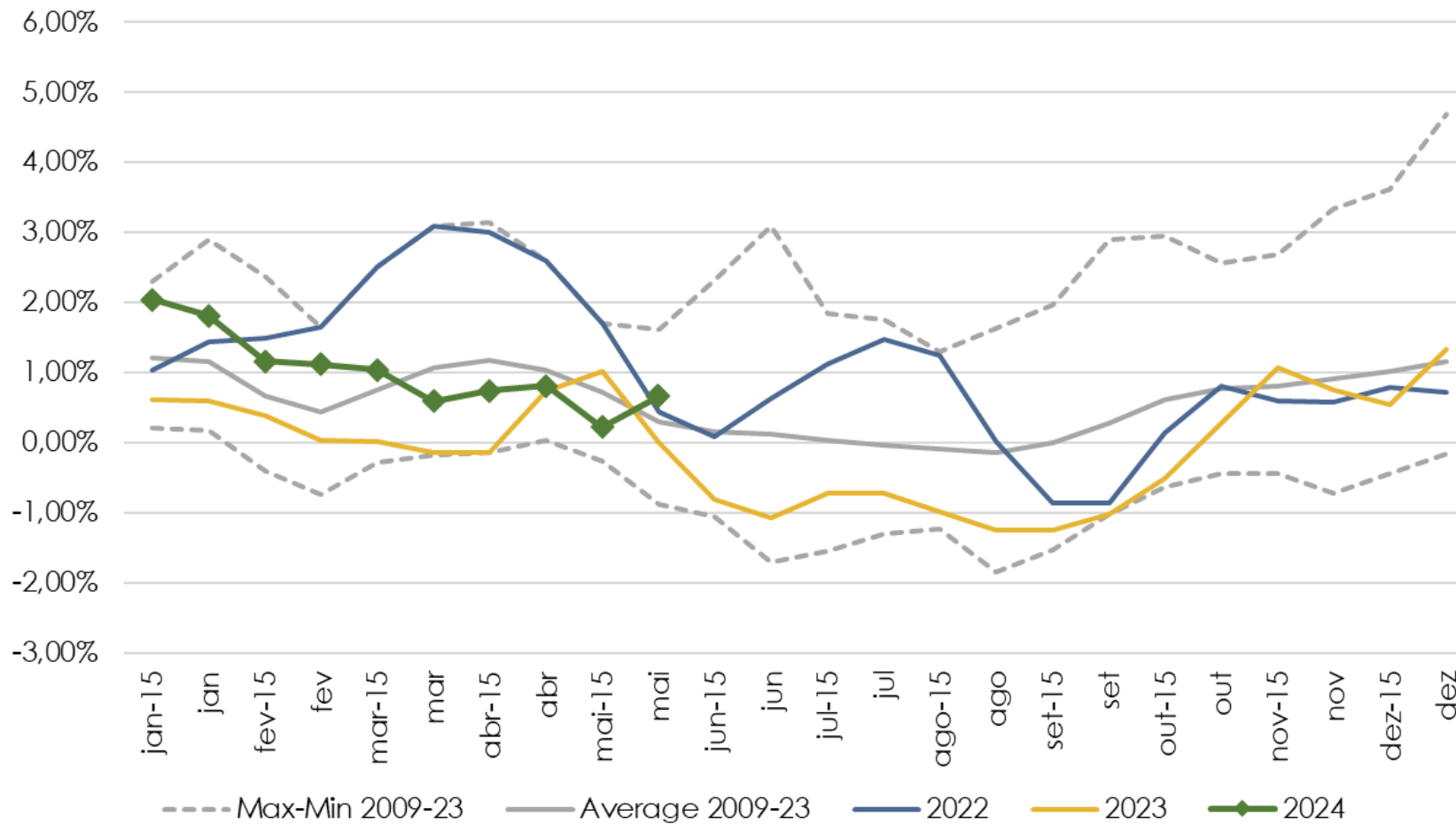
Underlying services (MoM SA)



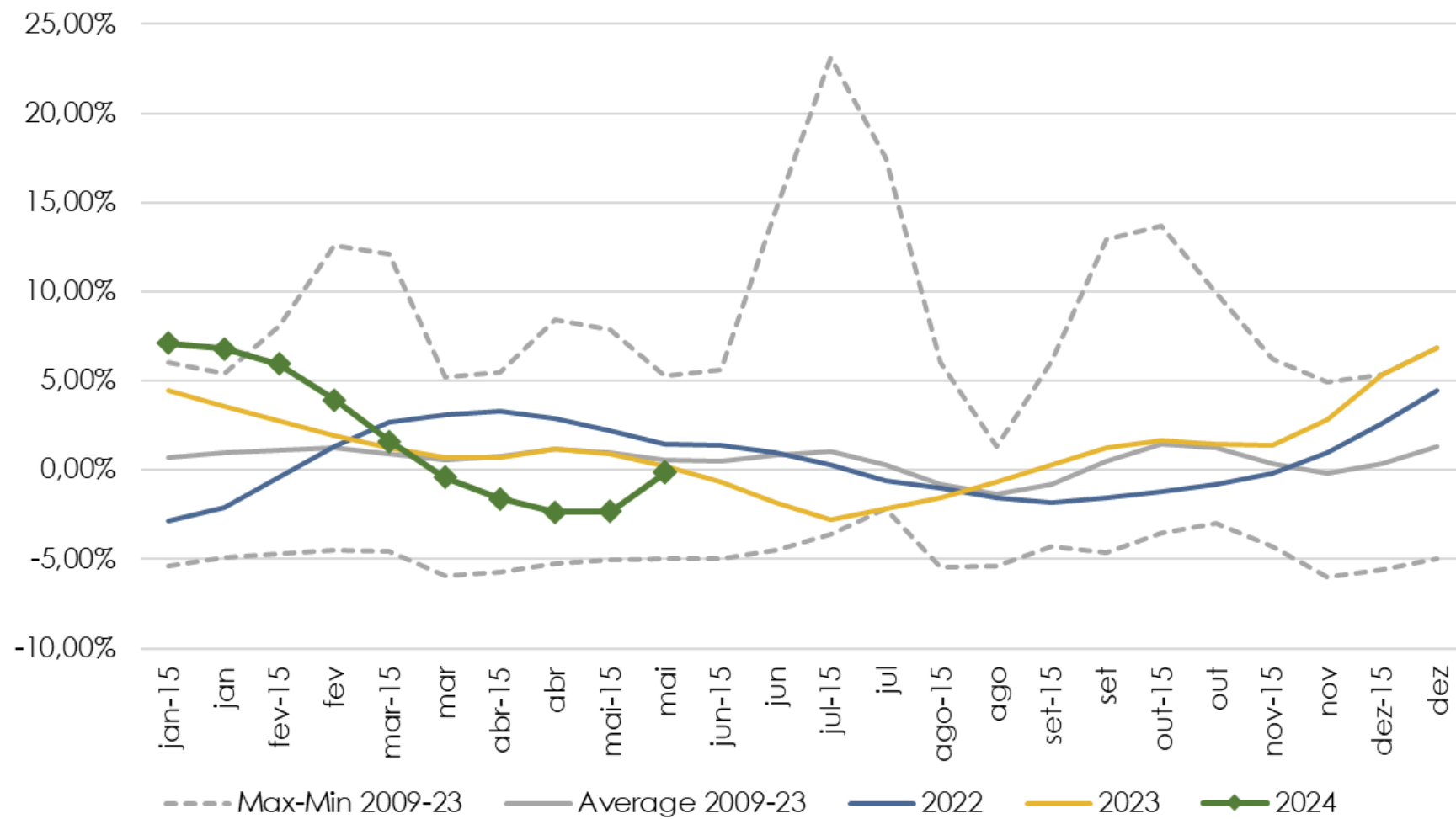
# Underlying Services



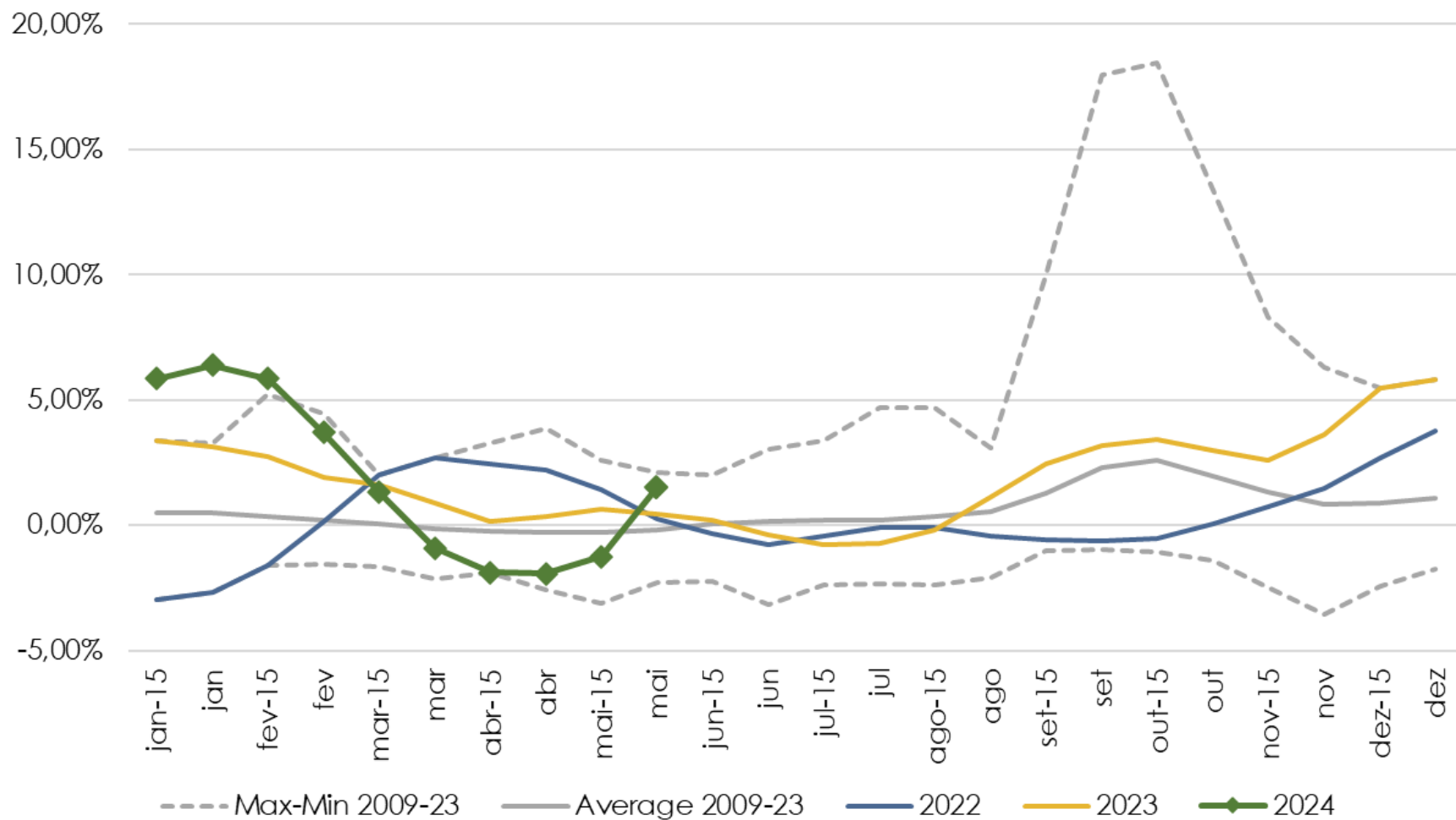
# Food at home



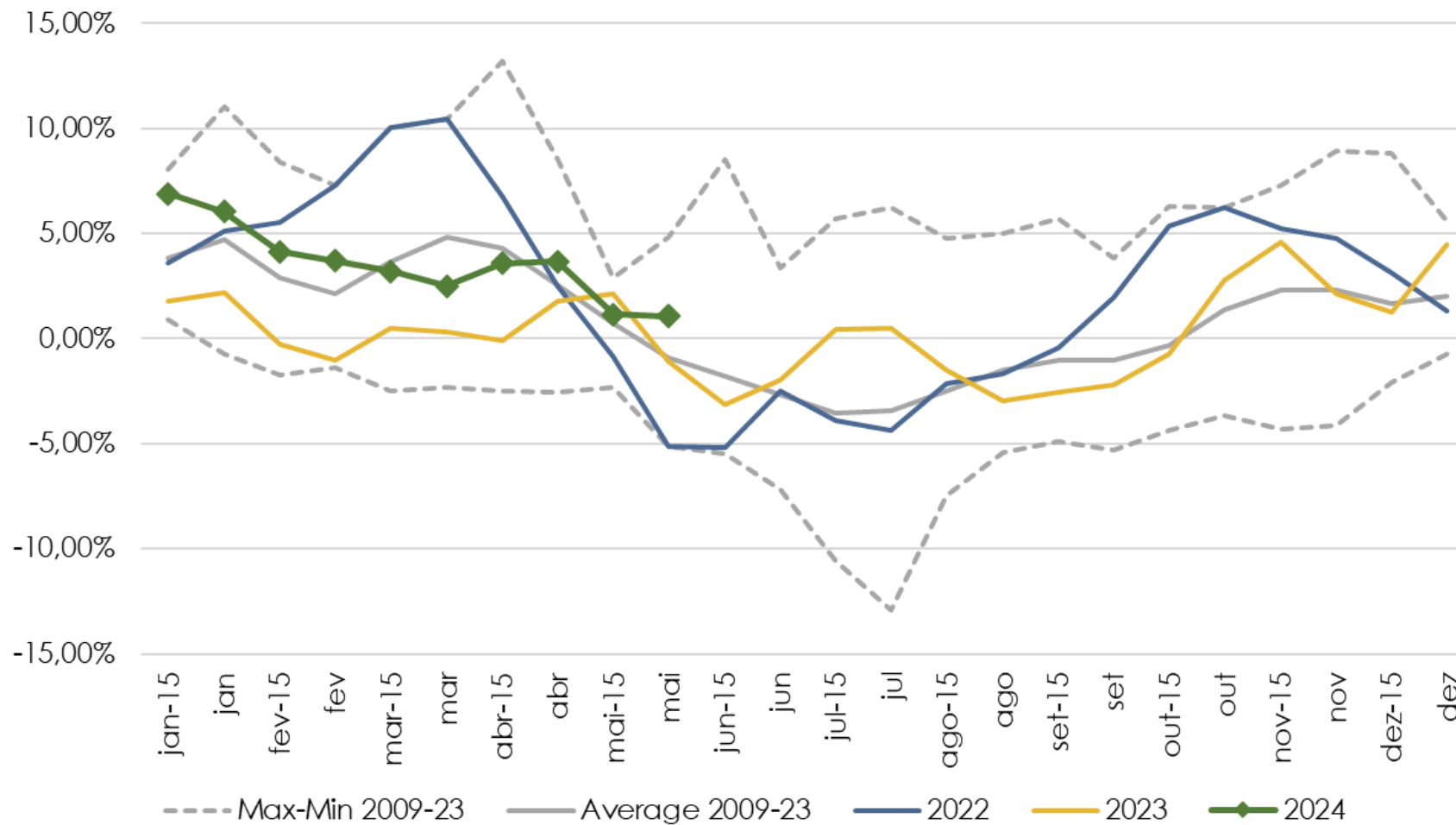
# Cereals



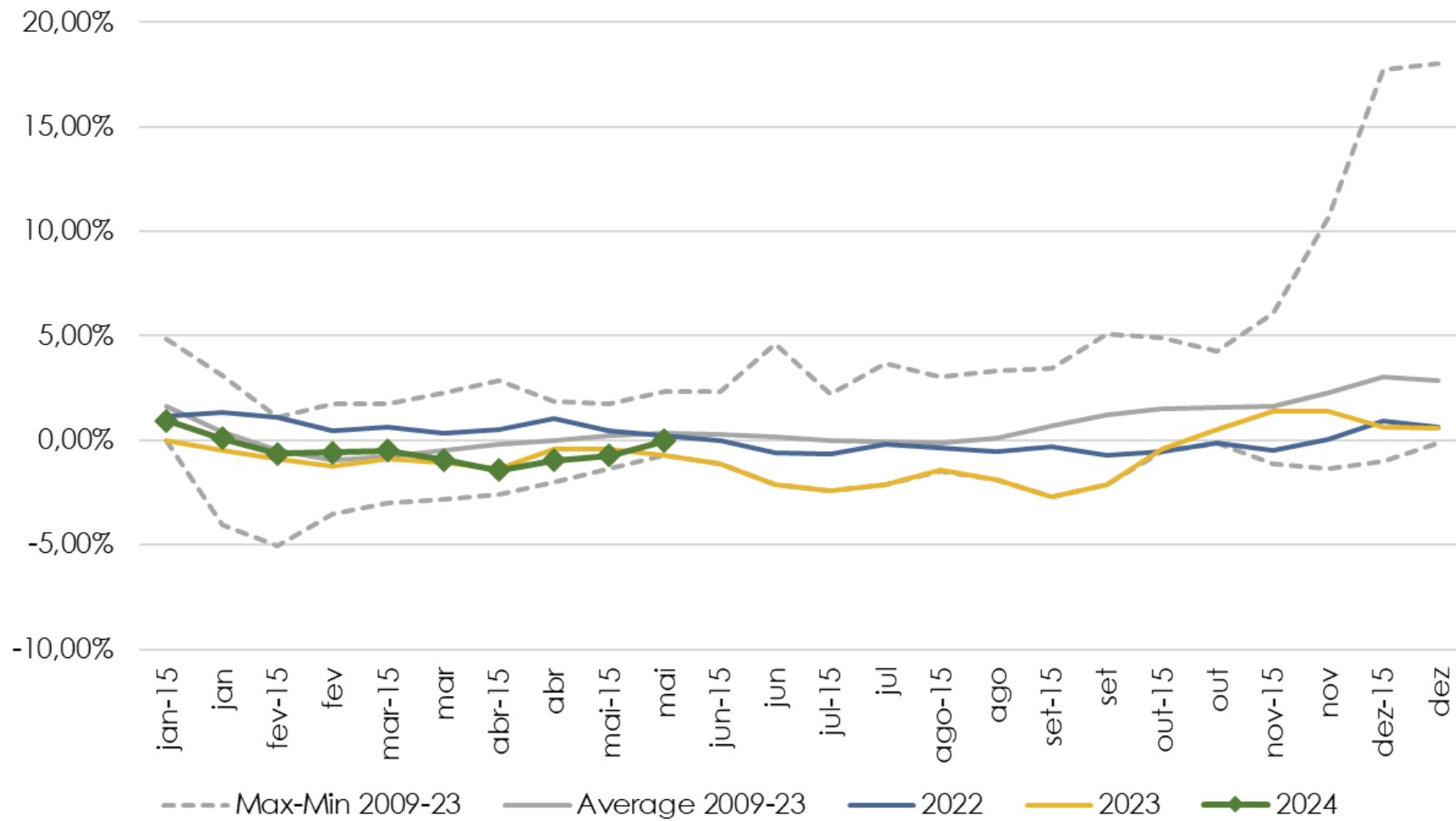
# Rice



# Fresh Products

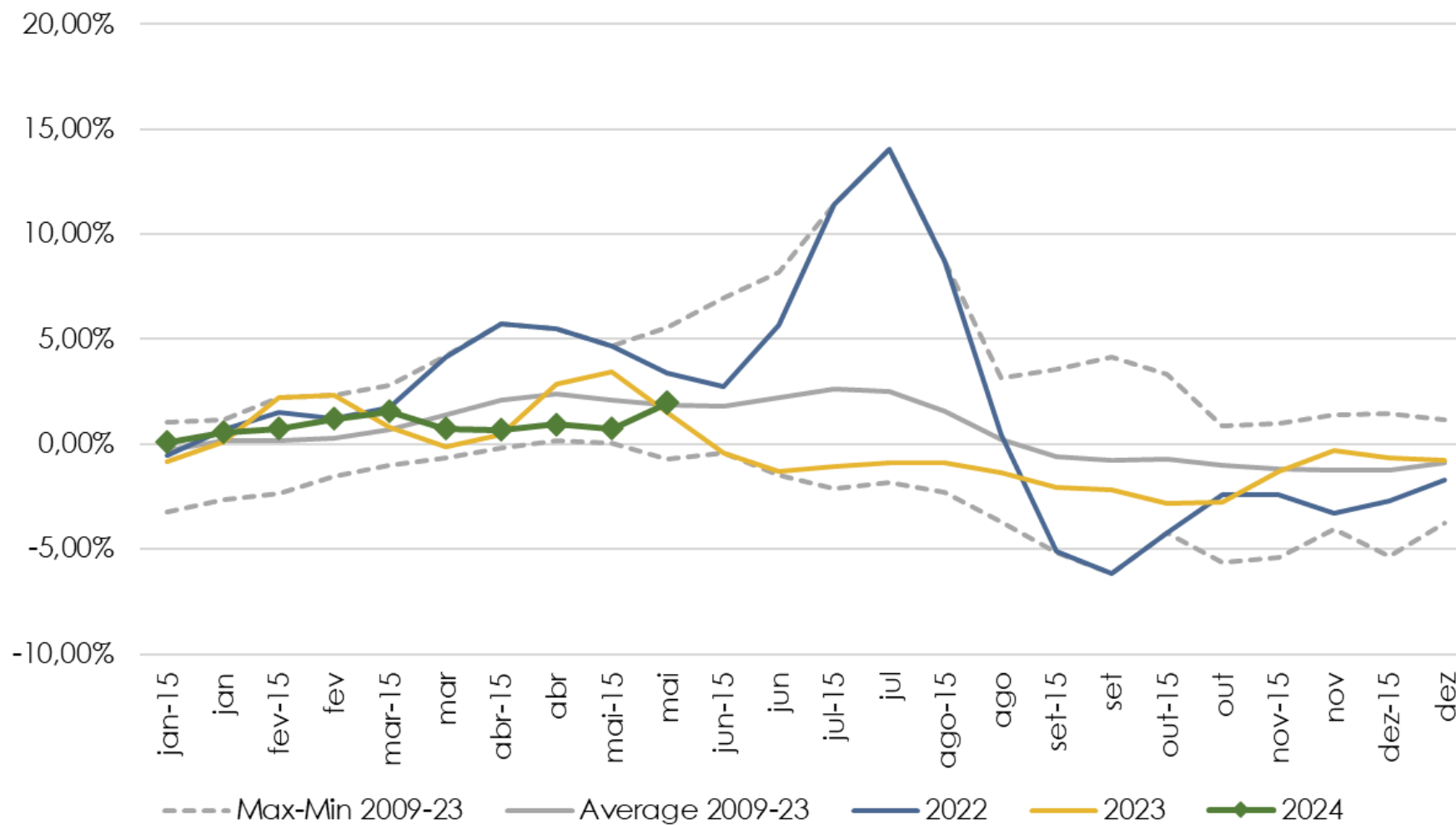


# Meat

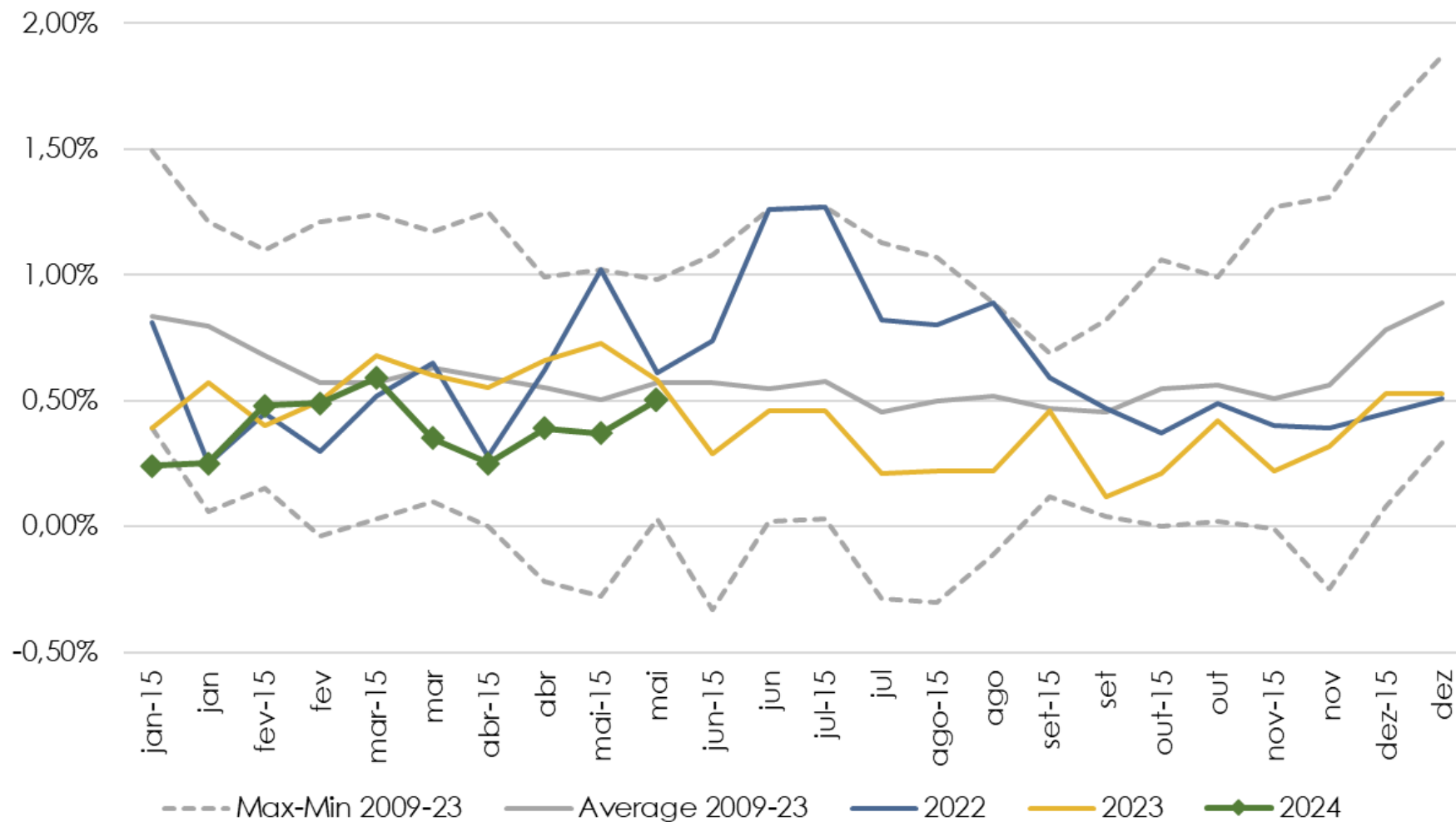




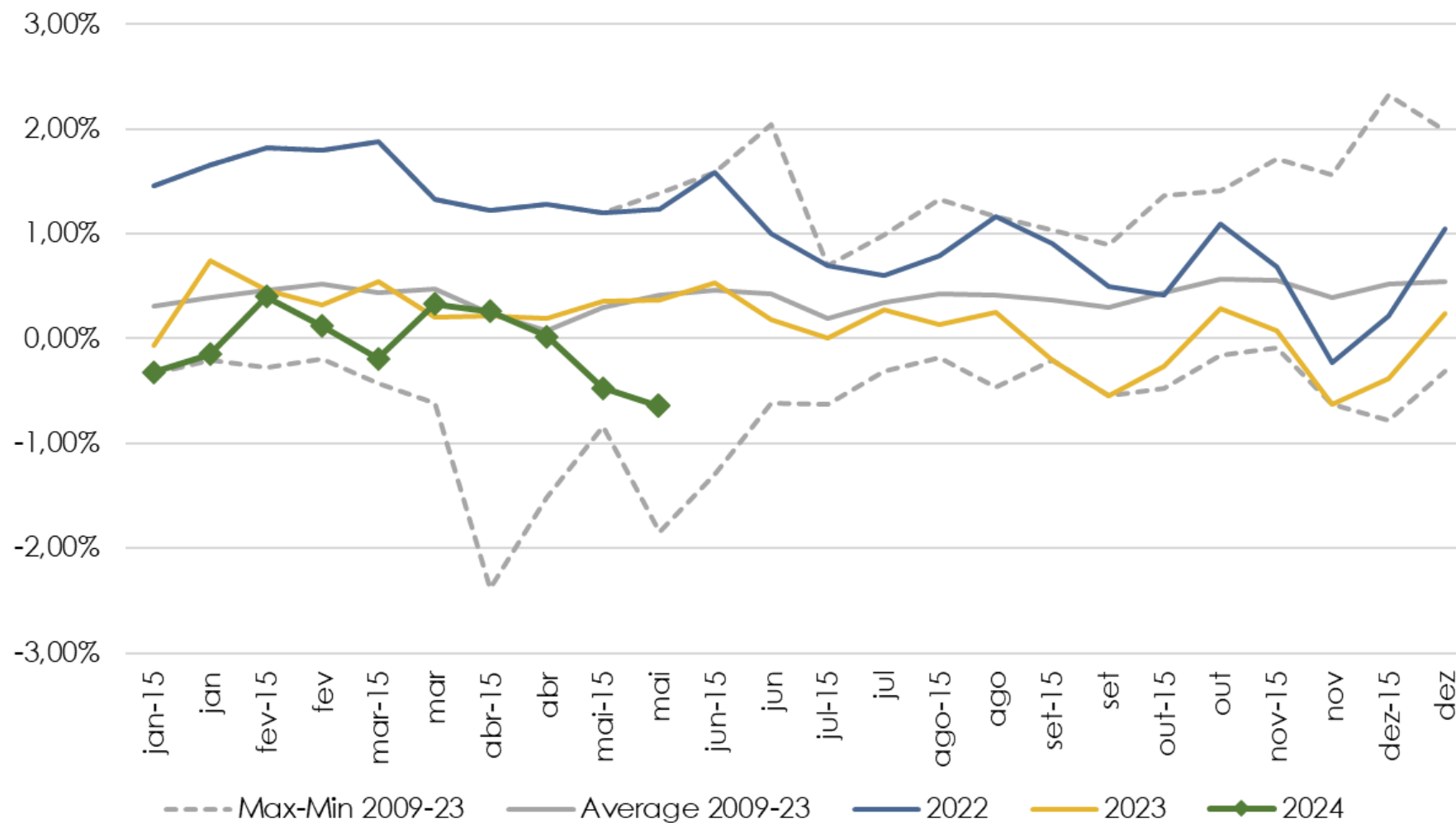
# Milk and dairy products



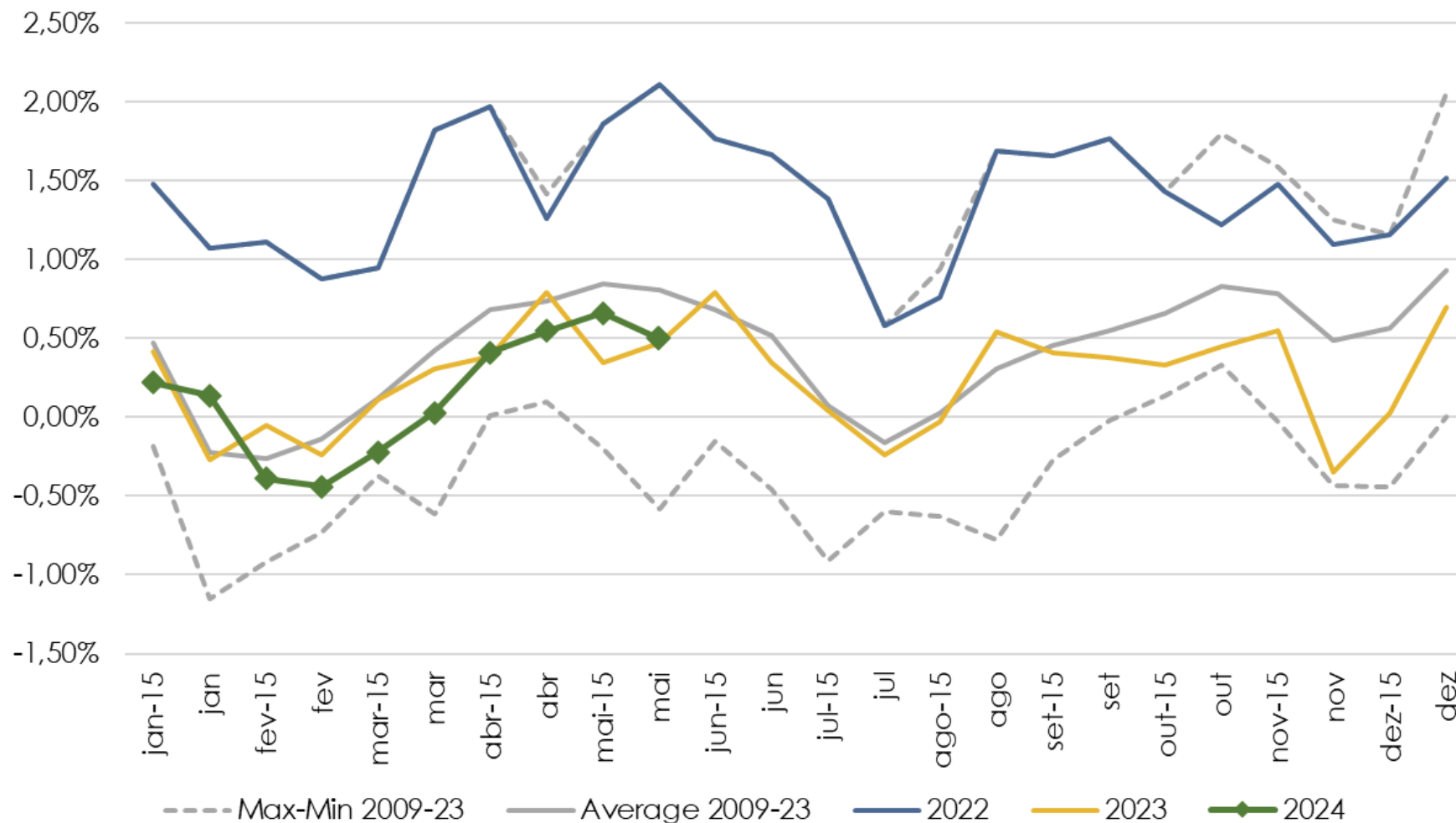
# Food away from home



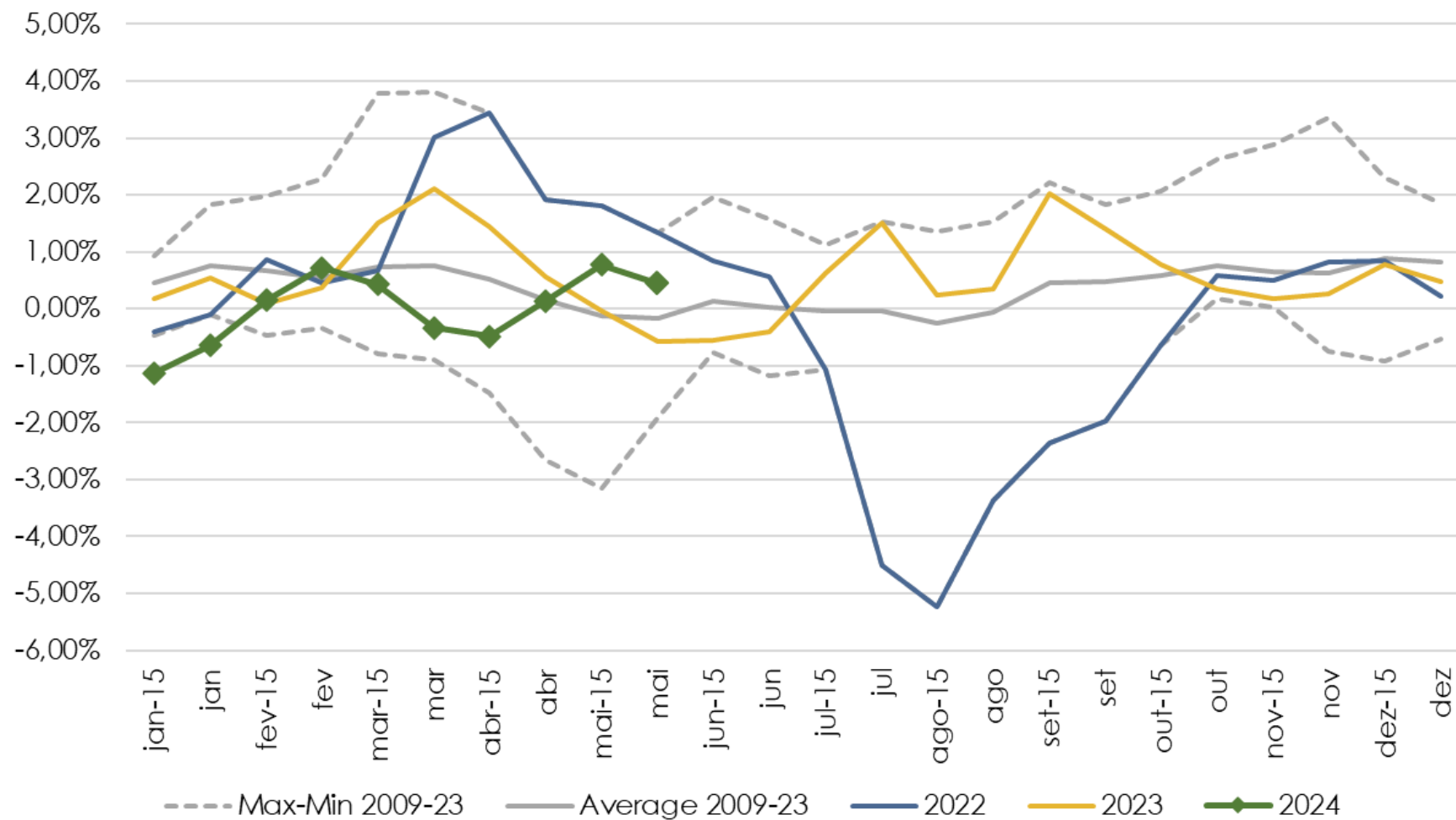
# Household furnishings and supplies



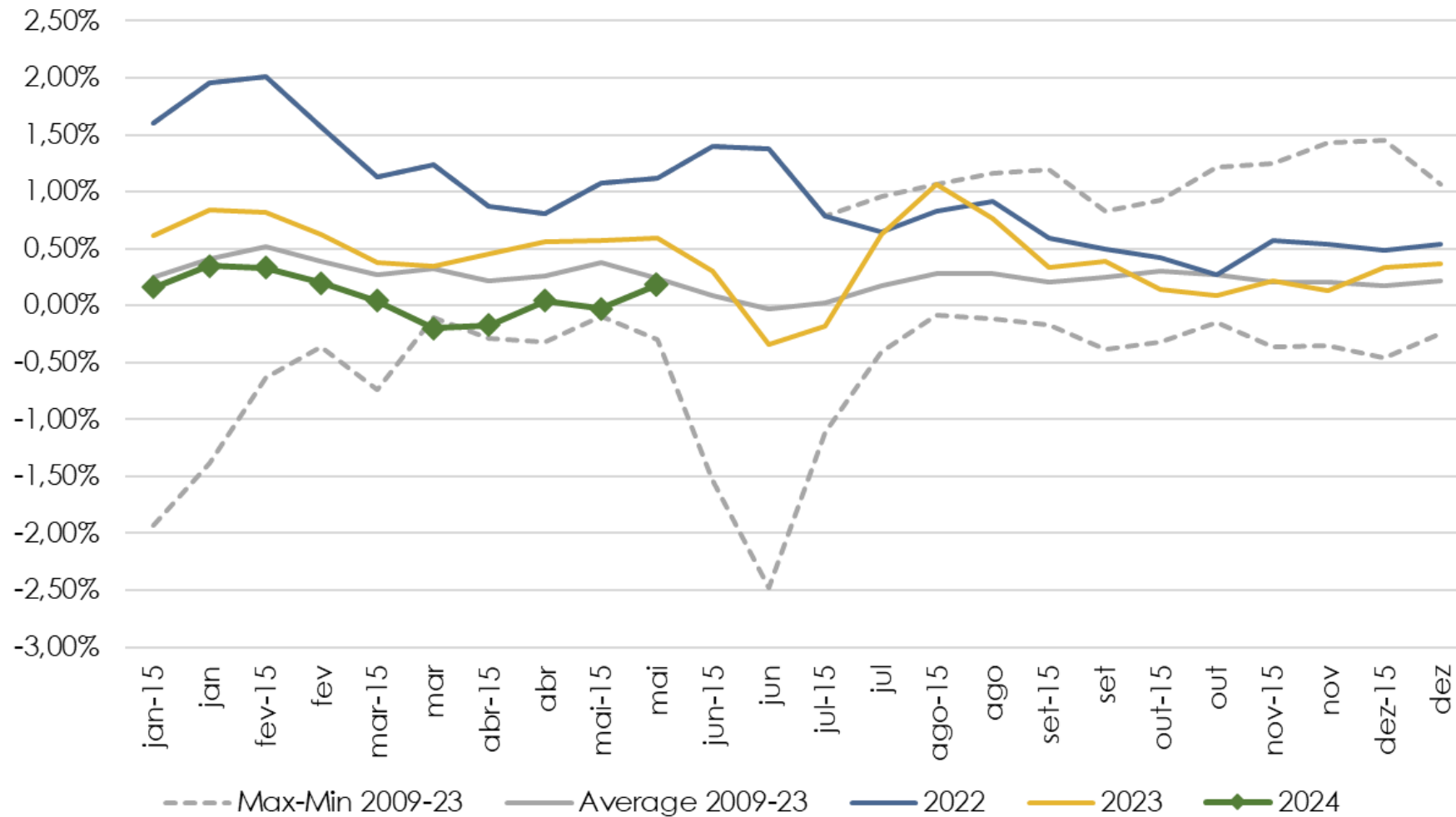
# Apparel



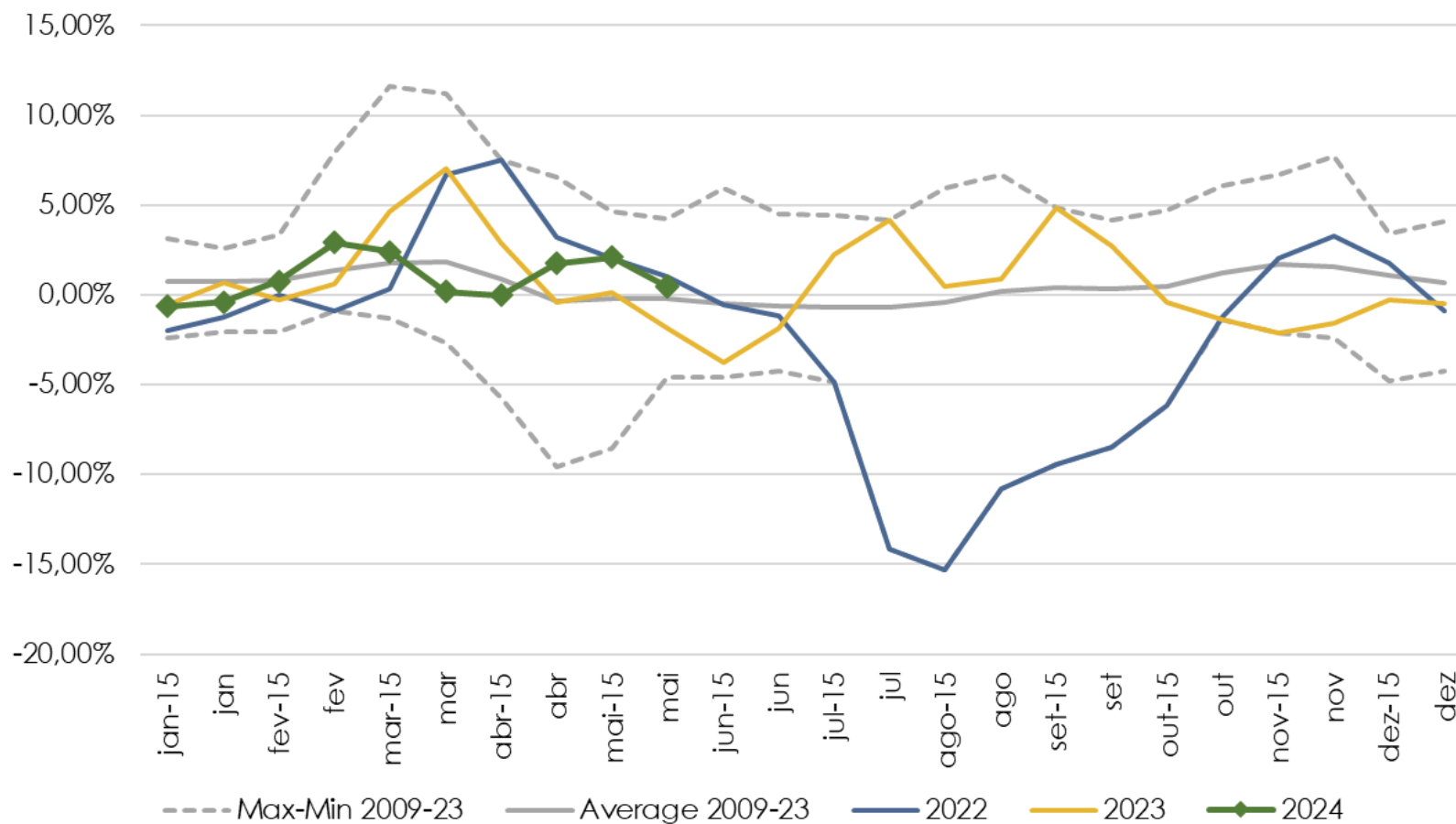
# Transport



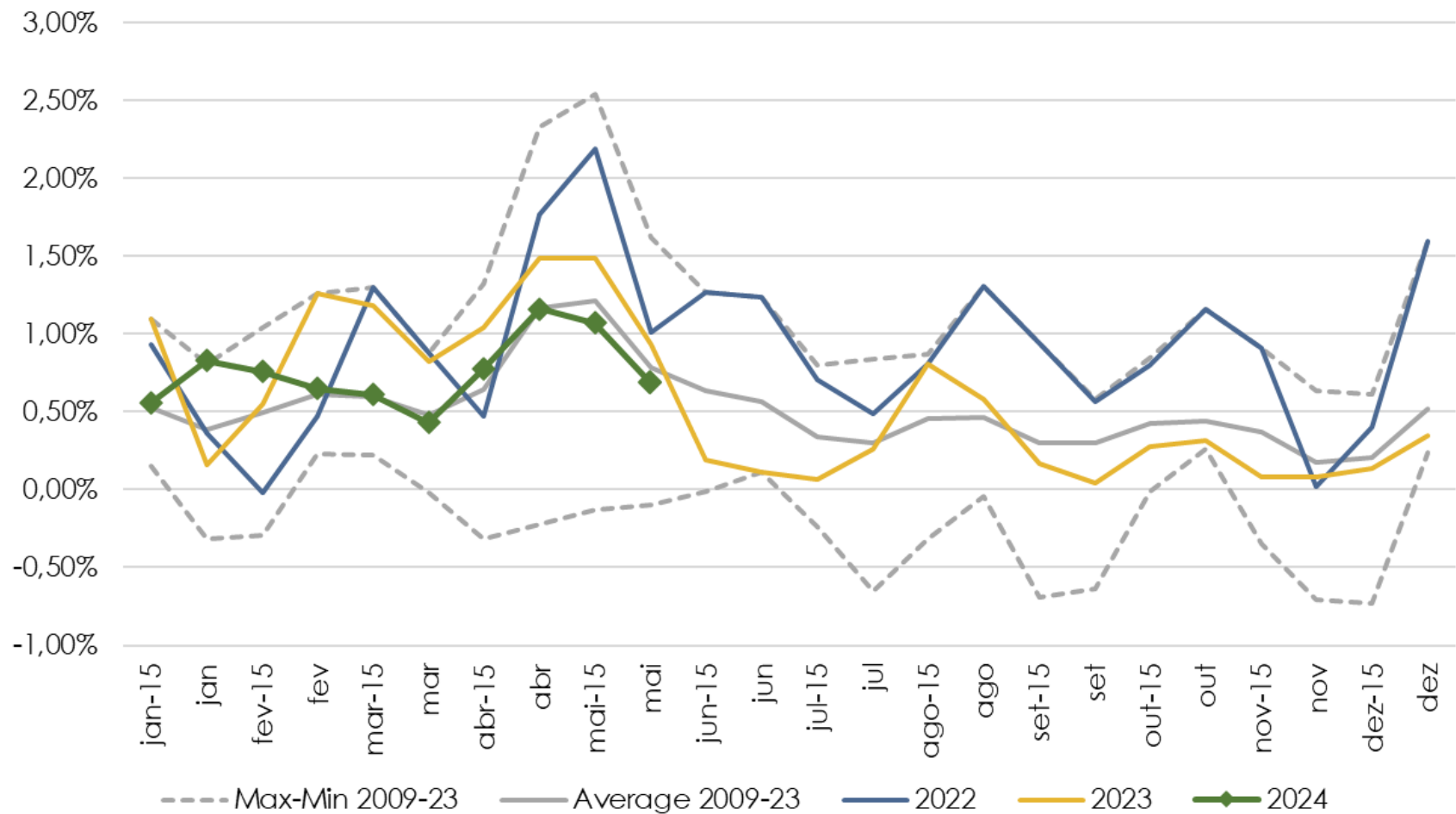
# Private vehicle



# Fuels (vehicles)

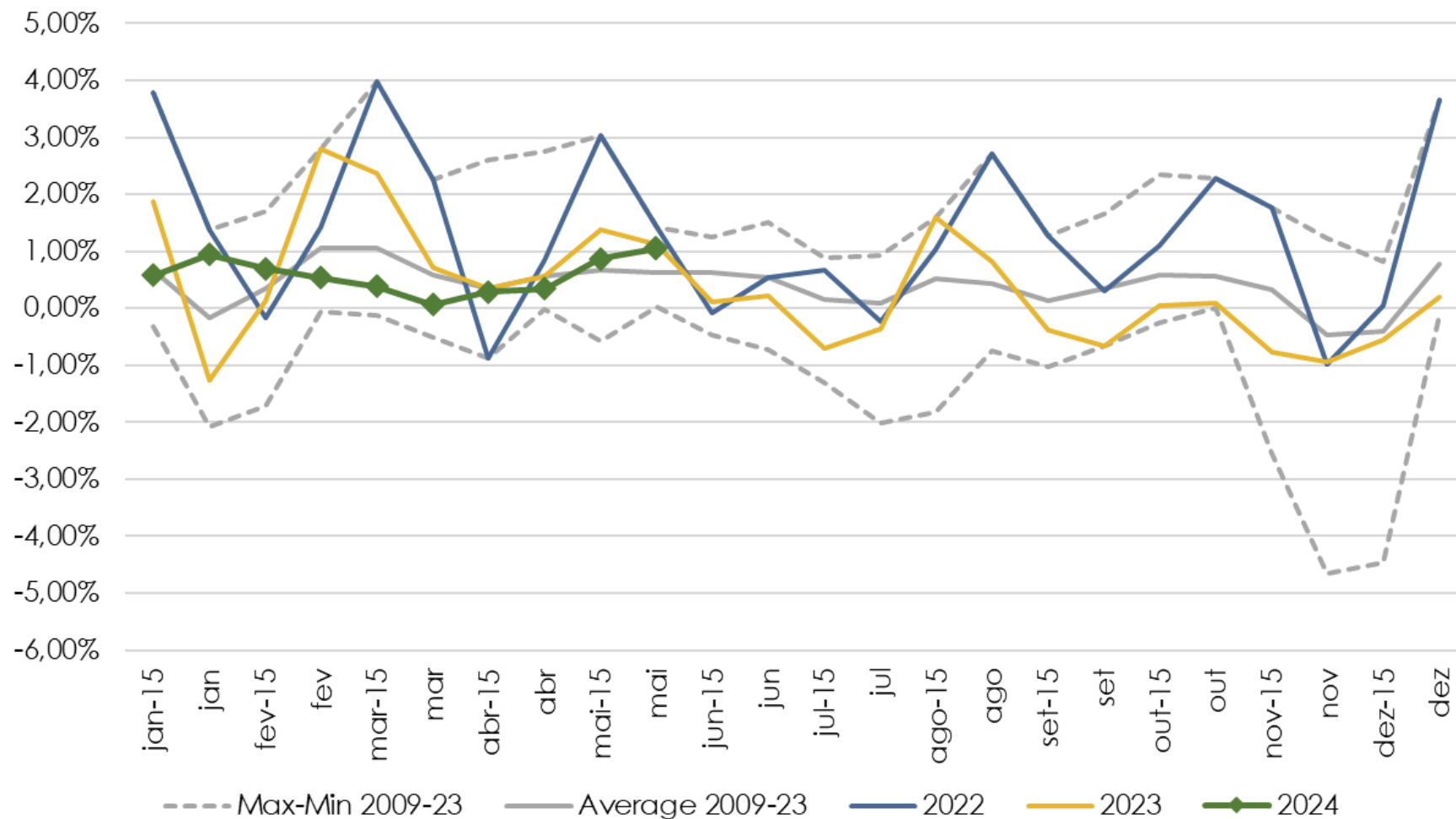


# Healthcare and personal care

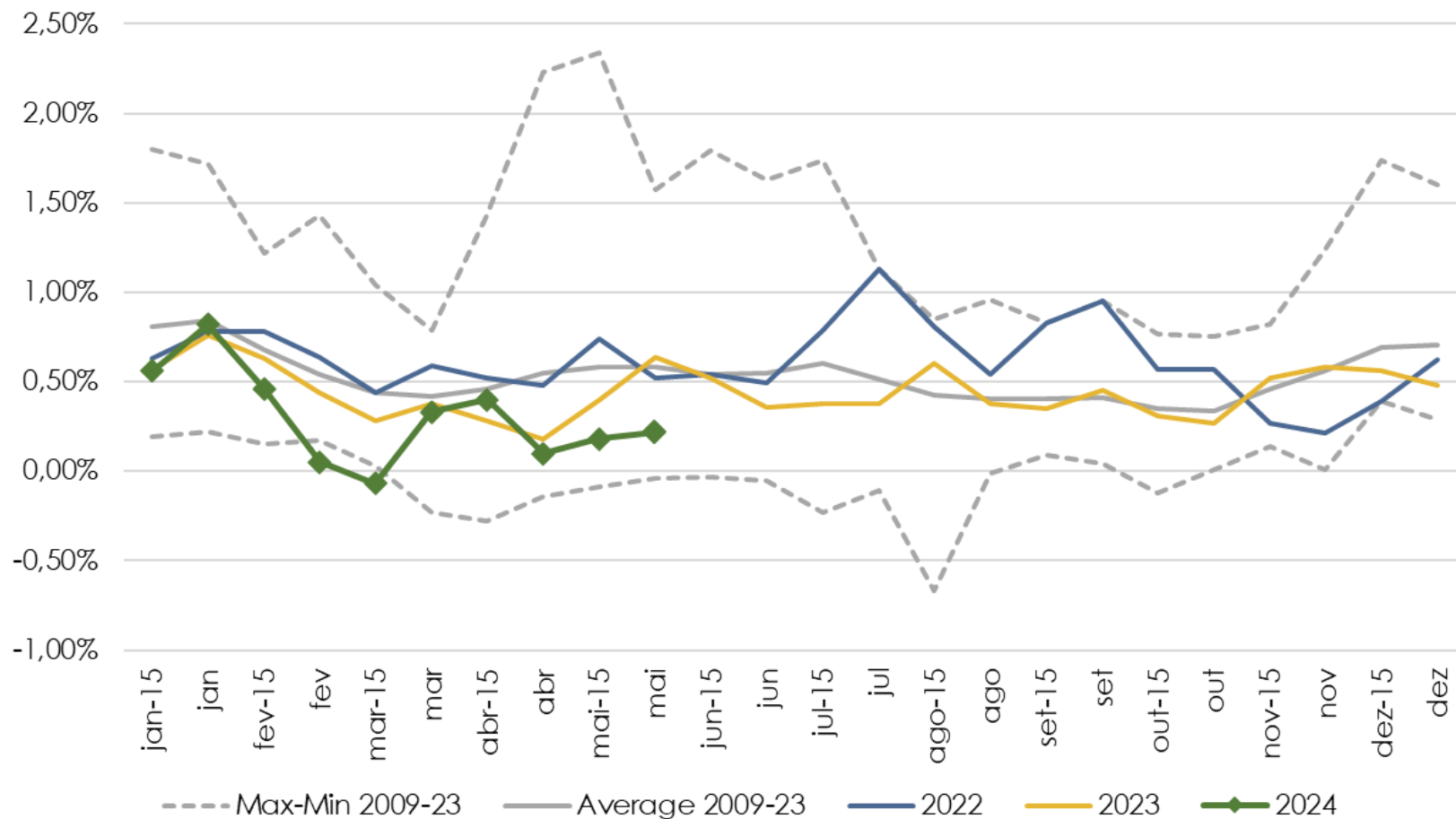




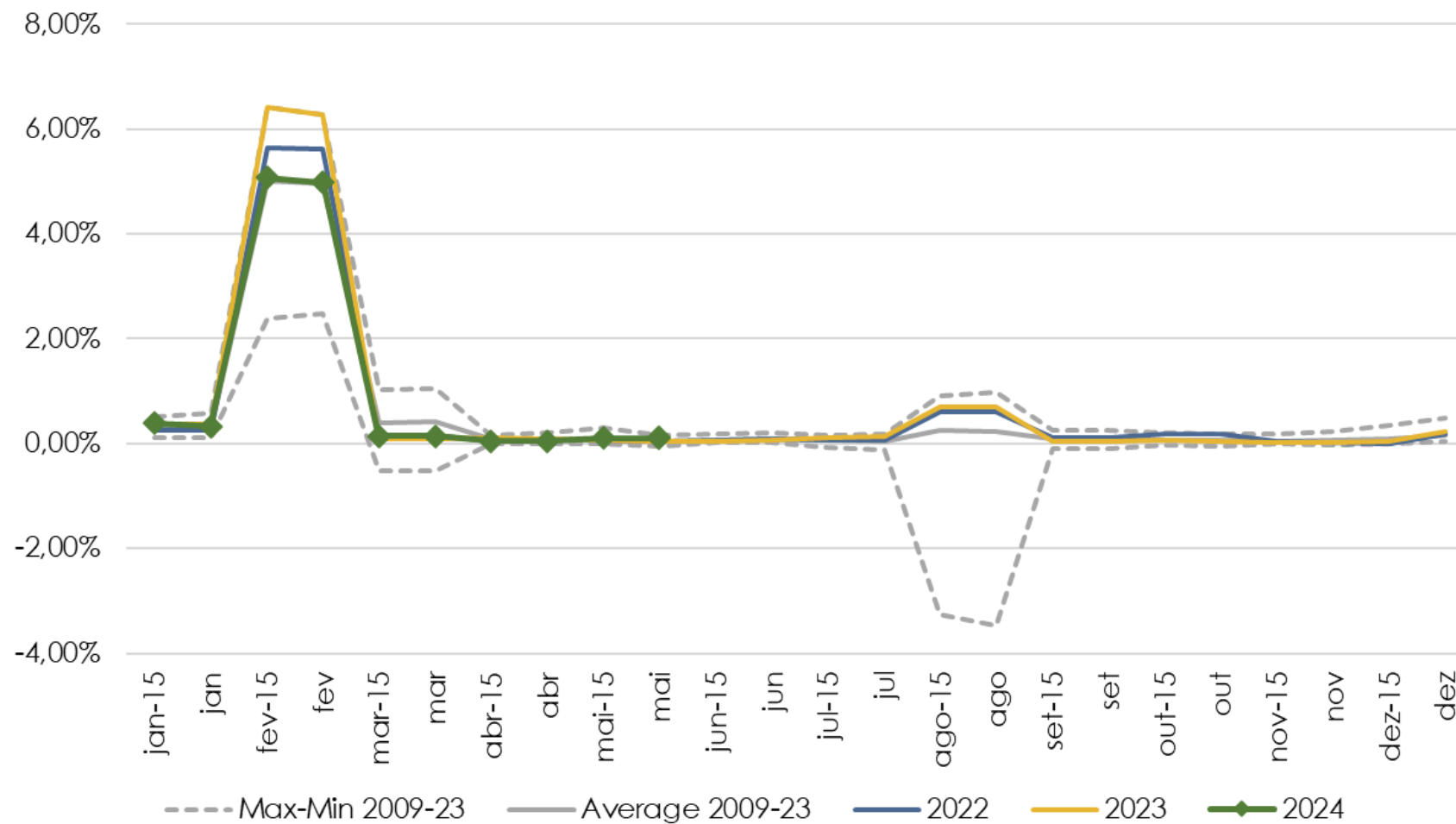
# Personal care



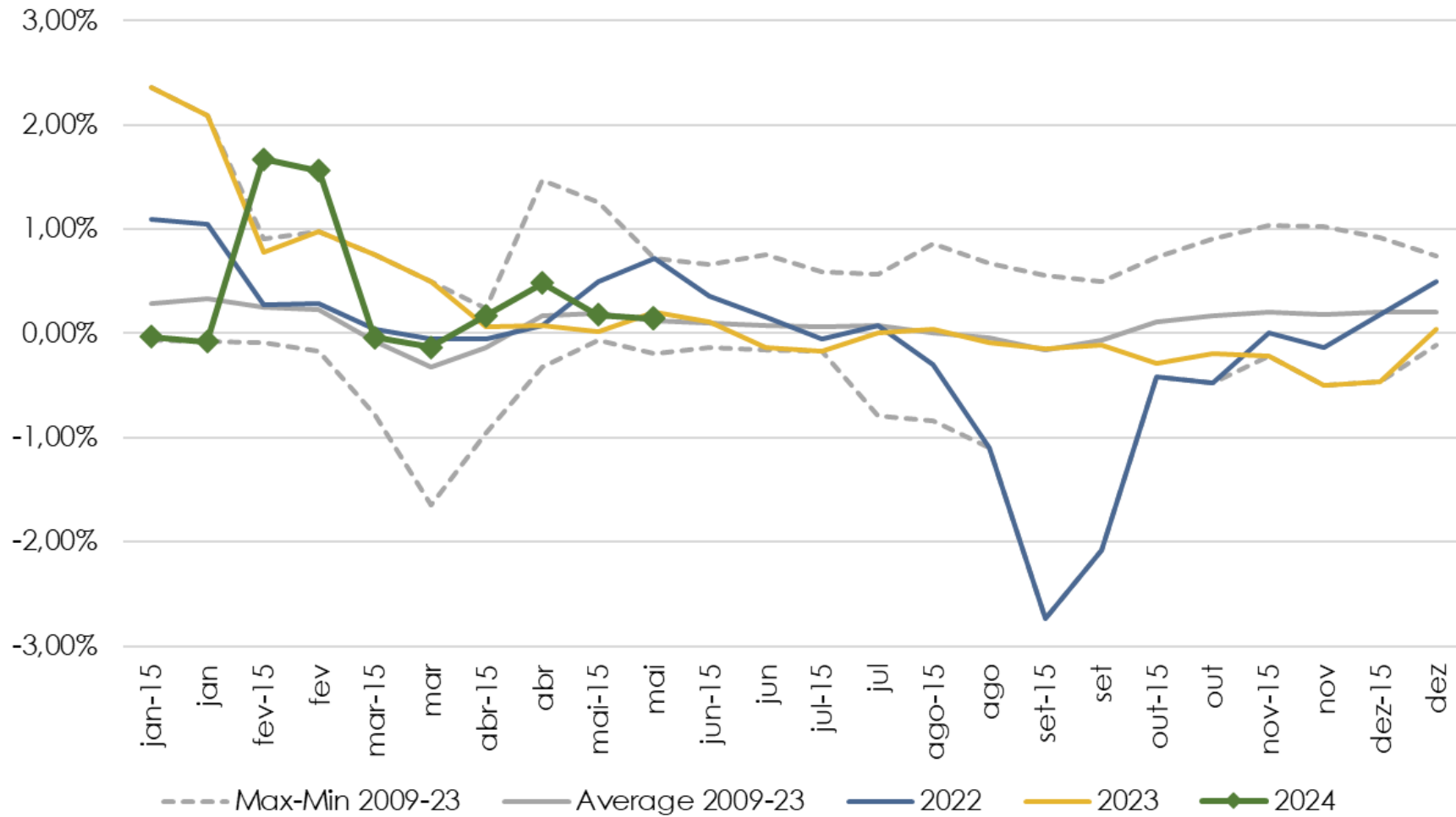
# Personal expenses



# Education



# Communication




 **buyside**brazil

 **buyside**brazil

---

 [contato@buysidebrazil.com](mailto:contato@buysidebrazil.com)

 +55 11 99173 0745

 [www.buysidebrazil.com](http://www.buysidebrazil.com)