

IPCA

June, 2024

	Weight	IPCA-15 May-24	IPCA May-24	IPCA-15 Jun-24	IPCA Jun-24	Forecast	bps
IPCA (CPI)	100%	0,44%	0,46%	0,39%	0,21%	0,28%	-7
Food and beverages	21,5%	0,26%	0,62%	0,98%	0,44%	0,75%	-7
Food at home	15,7%	0,22%	0,66%	1,13%	0,47%	0,87%	-6
Fresh products	2,9%	1,15%	1,04%	1,42%	-0,52%	0,04%	-2
Meat	2,4%	-0,72%	-0,04%	-0,15%	-0,47%	-0,55%	0
Milk and dairy	1,9%	0,75%	1,97%	4,13%	3,83%	4,95%	-2
Food away from home	5,8%	0,37%	0,50%	0,59%	0,37%	0,42%	0
Housing	15,2%	0,25%	0,67%	0,63%	0,25%	0,41%	-2
Residential electricity	4,0%	0,17%	0,94%	0,79%	0,30%	0,60%	-1
Household furnishings and supplies	3,7%	-0,44%	-0,53%	-0,01%	0,19%	-0,24%	2
Apparel	4,7%	0,66%	0,50%	0,30%	0,02%	0,24%	-1
Transportation	20,5%	0,77%	0,44%	-0,23%	-0,19%	-0,19%	0
Airfares	0,6%	6,04%	5,91%	-9,87%	-9,88%	-9,87%	0
Gasoline	5,1%	1,90%	0,45%	-0,13%	0,64%	0,03%	3
Health and personal care	13,5%	1,07%	0,69%	0,57%	0,54%	0,50%	1
Personal hygiene	4,0%	0,87%	1,04%	0,87%	0,77%	0,87%	0
Personal expenses	10,1%	0,18%	0,22%	0,25%	0,29%	0,15%	1
Education	6,0%	0,11%	0,09%	0,05%	0,06%	0,04%	0
Communication	4,8%	0,18%	0,14%	0,17%	-0,08%	0,07%	-1



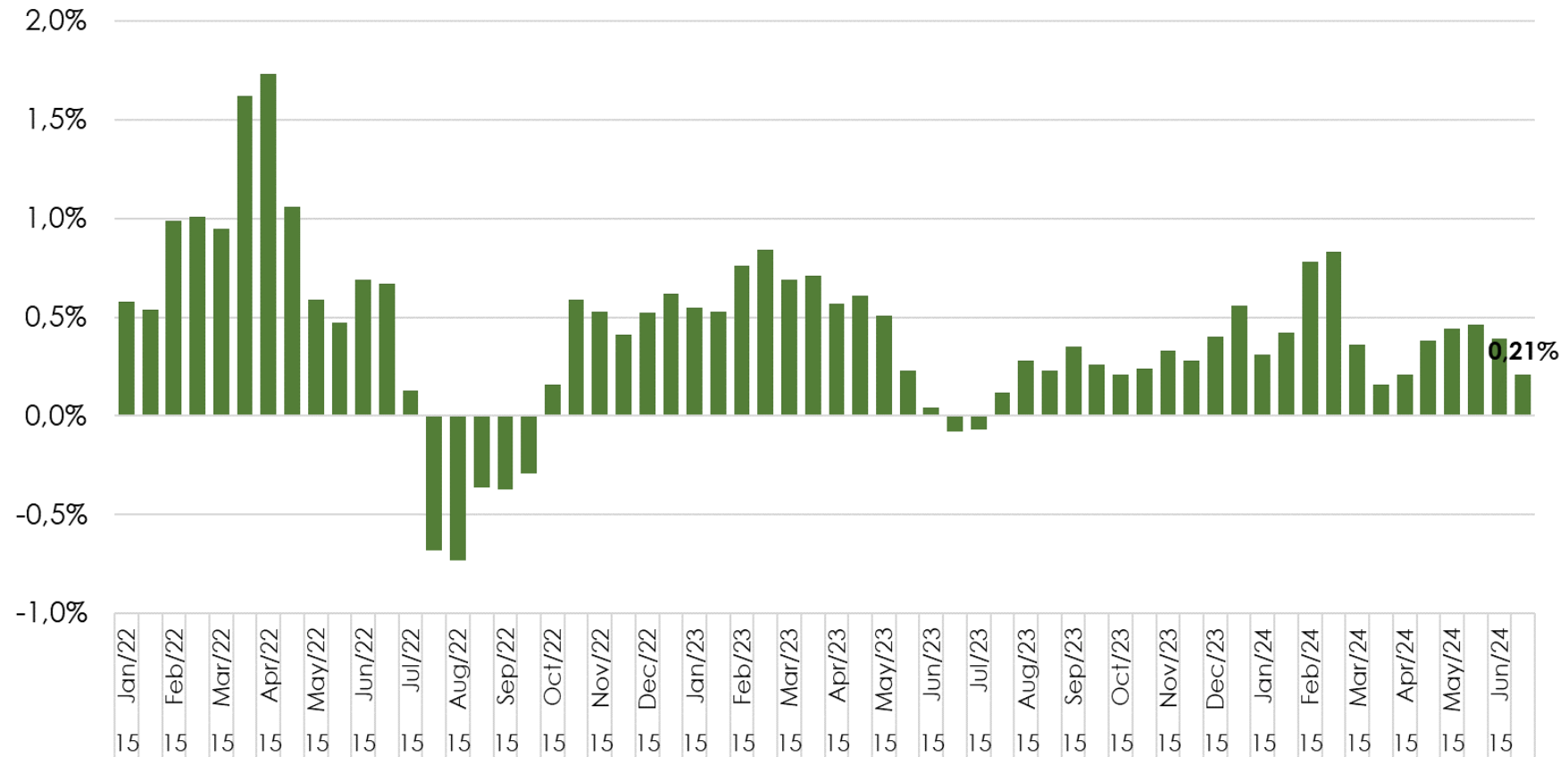
IPCA

	Weight	IPCA-15 May-24	IPCA May-24	IPCA-15 Jun-24	IPCA Jun-24	Forecast	bps
IPCA (CPI)	100%	0,44%	0,46%	0,39%	0,21%	0,28%	-7
Free prices	73,7%	0,30%	0,43%	0,35%	0,16%	0,27%	-8
Administered prices	26,3%	0,85%	0,55%	0,40%	0,33%	0,30%	1
Services	35,8%	0,34%	0,42%	0,10%	0,04%	0,04%	0
Underlying services	21,1%	0,31%	0,41%	0,40%	0,36%	0,32%	1
Industrial goods	23,3%	0,28%	0,29%	0,31%	0,13%	0,21%	-2
Durable	9,7%	-0,22%	0,01%	0,28%	0,00%	0,05%	-1
Semi-durable	6,1%	0,46%	0,31%	0,15%	-0,07%	0,21%	-2
Core average	-	0,31%	0,39%	0,34%	0,23%	0,27%	
EX0	59,0%	0,32%	0,36%	0,19%	0,09%	0,10%	-1
EX3	36,9%	0,27%	0,37%	0,35%	0,27%	0,29%	-1
MS	-	0,32%	0,39%	0,40%	0,28%	0,33%	
DP	-	0,30%	0,36%	0,37%	0,20%	0,27%	
P55	-	0,34%	0,45%	0,37%	0,30%	0,33%	

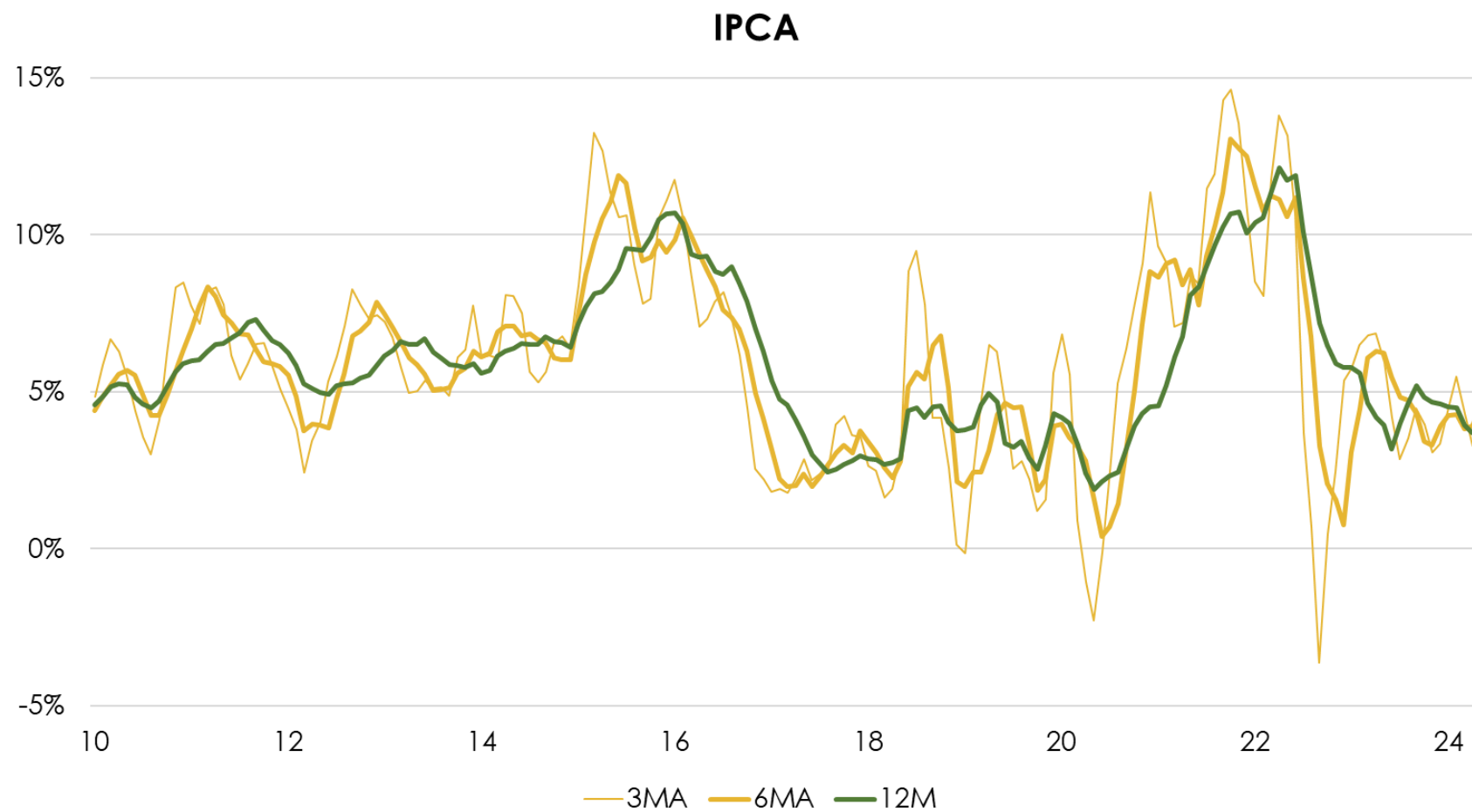


IPCA

IPCA (MoM)

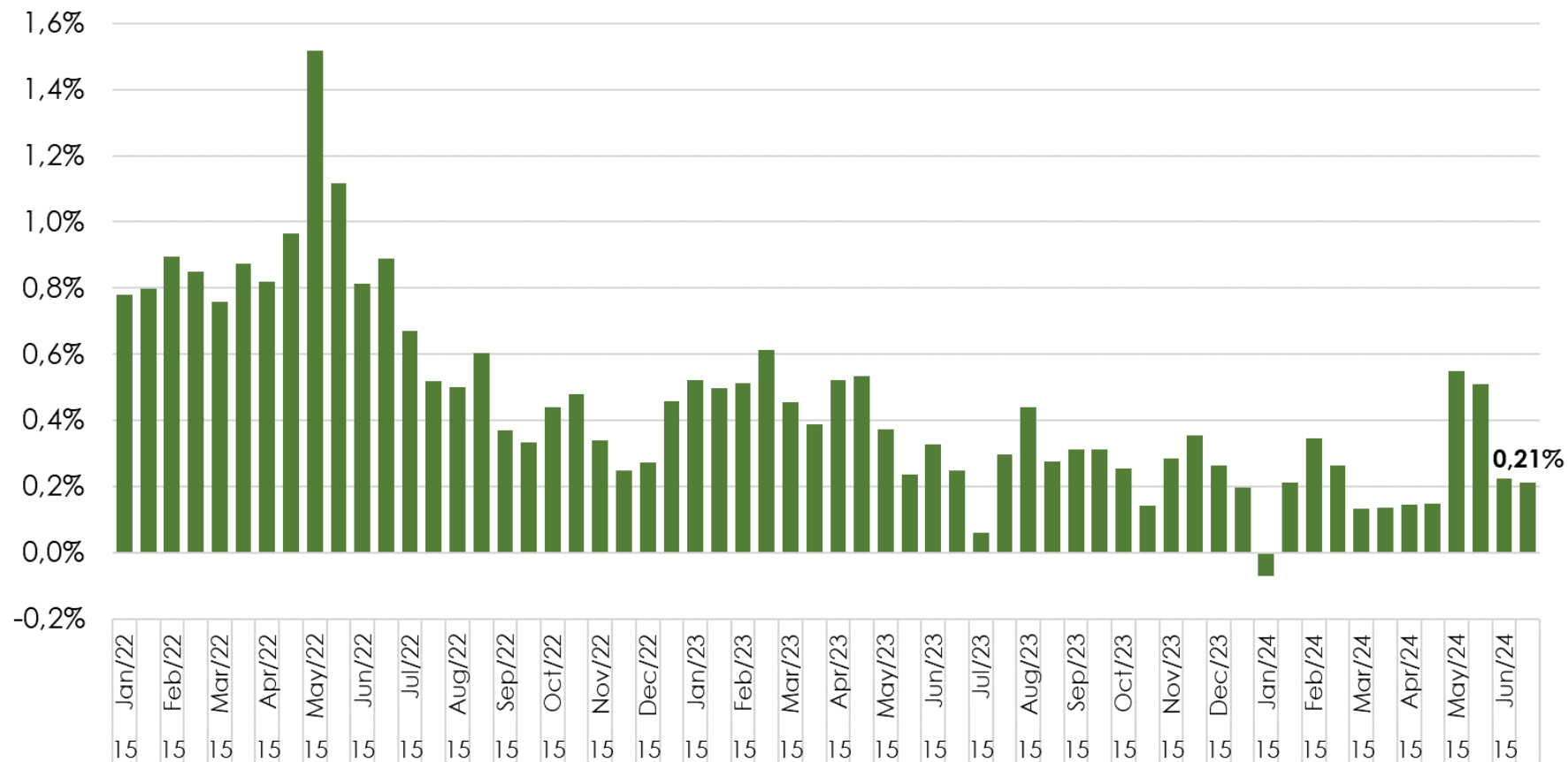


IPCA

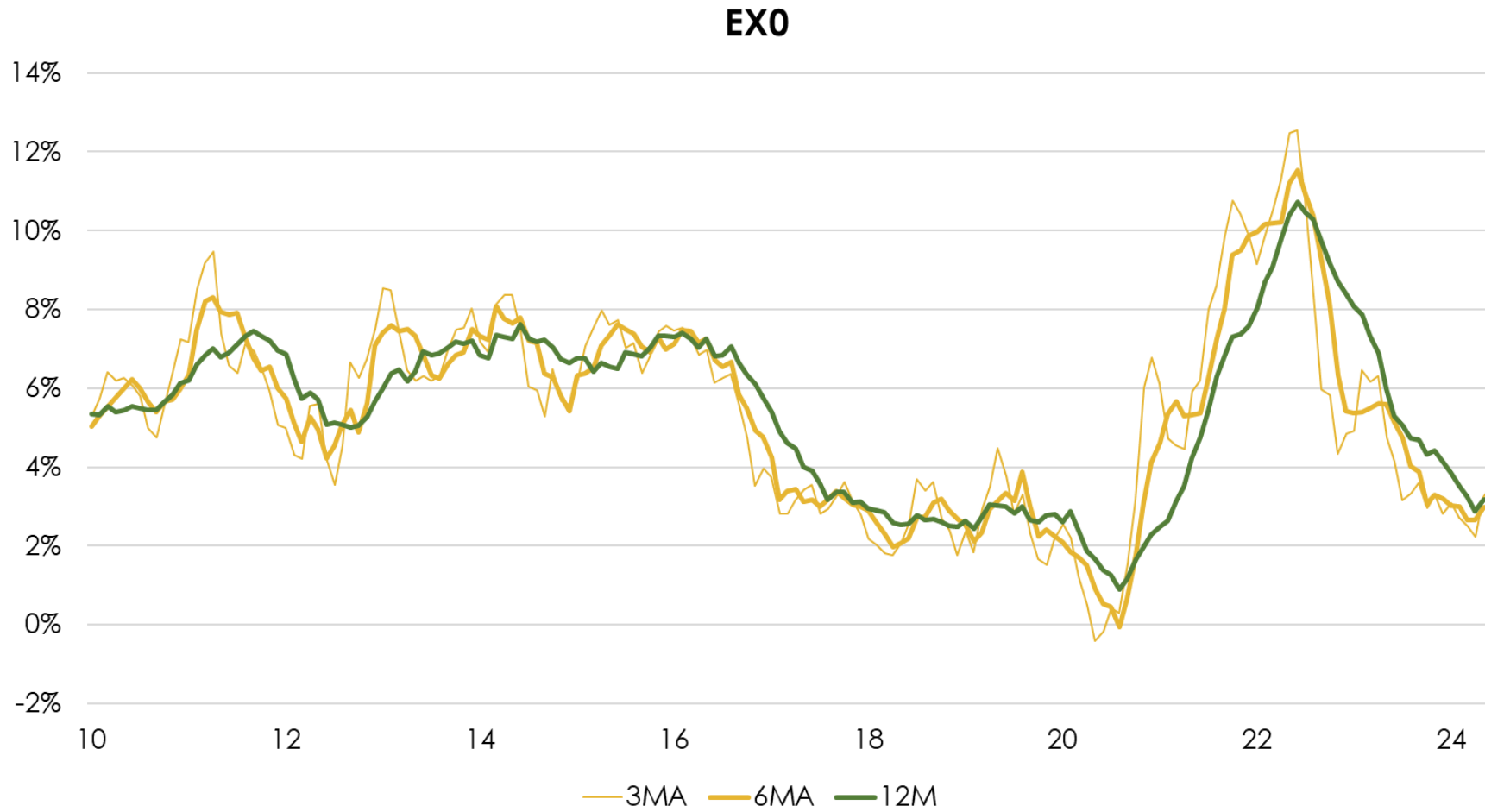


EX0 Core

EX0 (MoM SA)

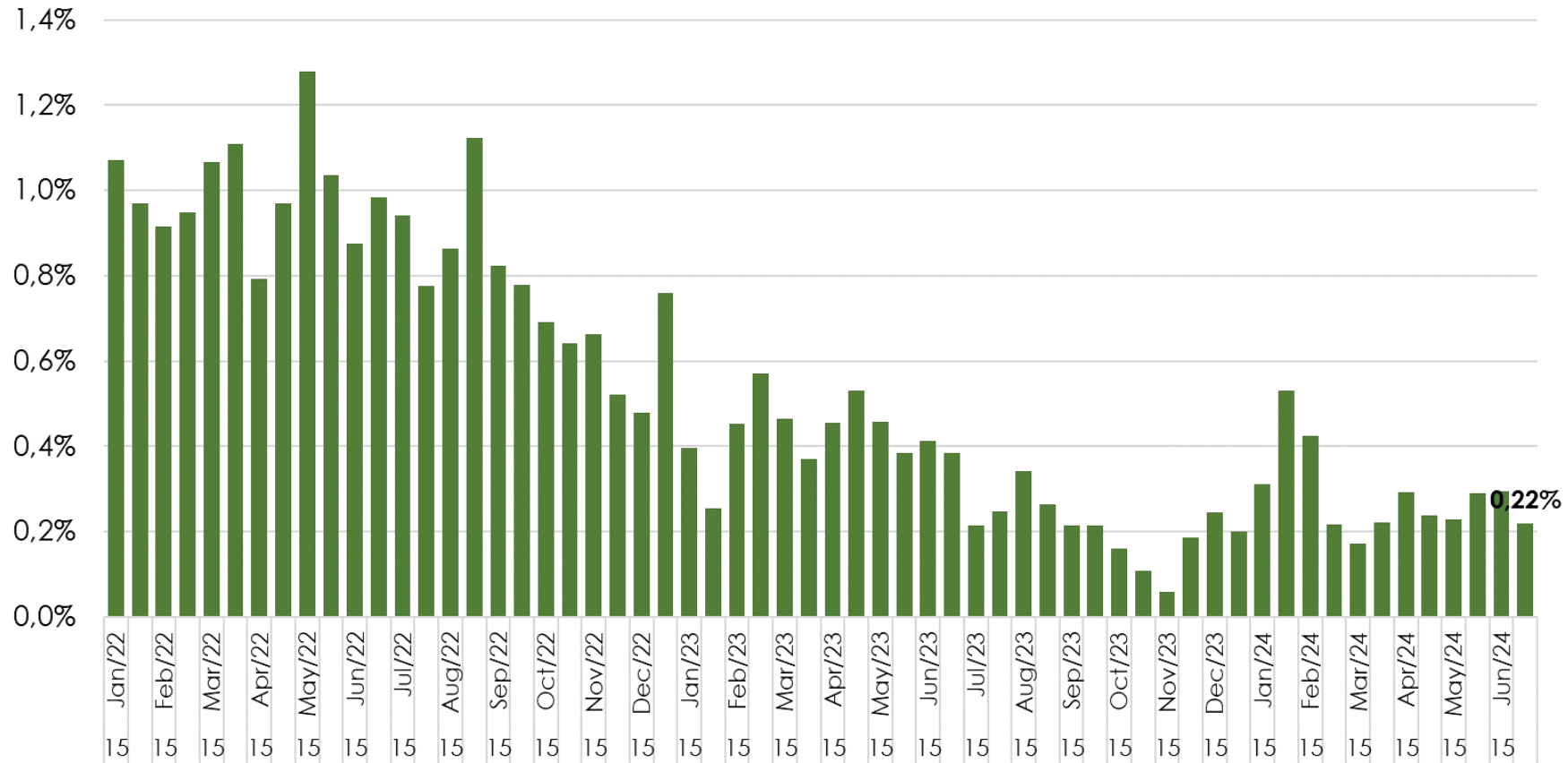


EX0 Core

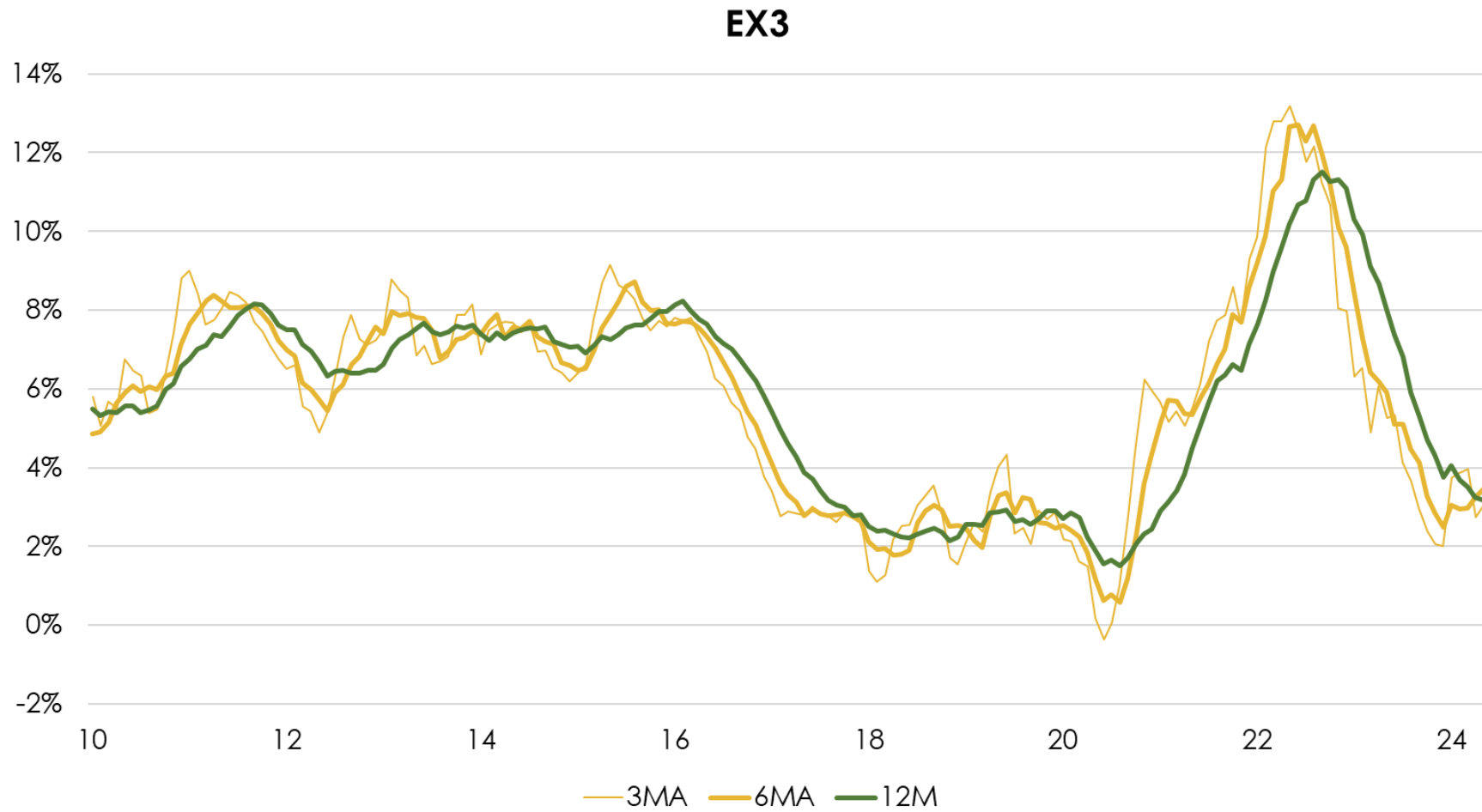


EX3 Core

EX3 (MoM SA)

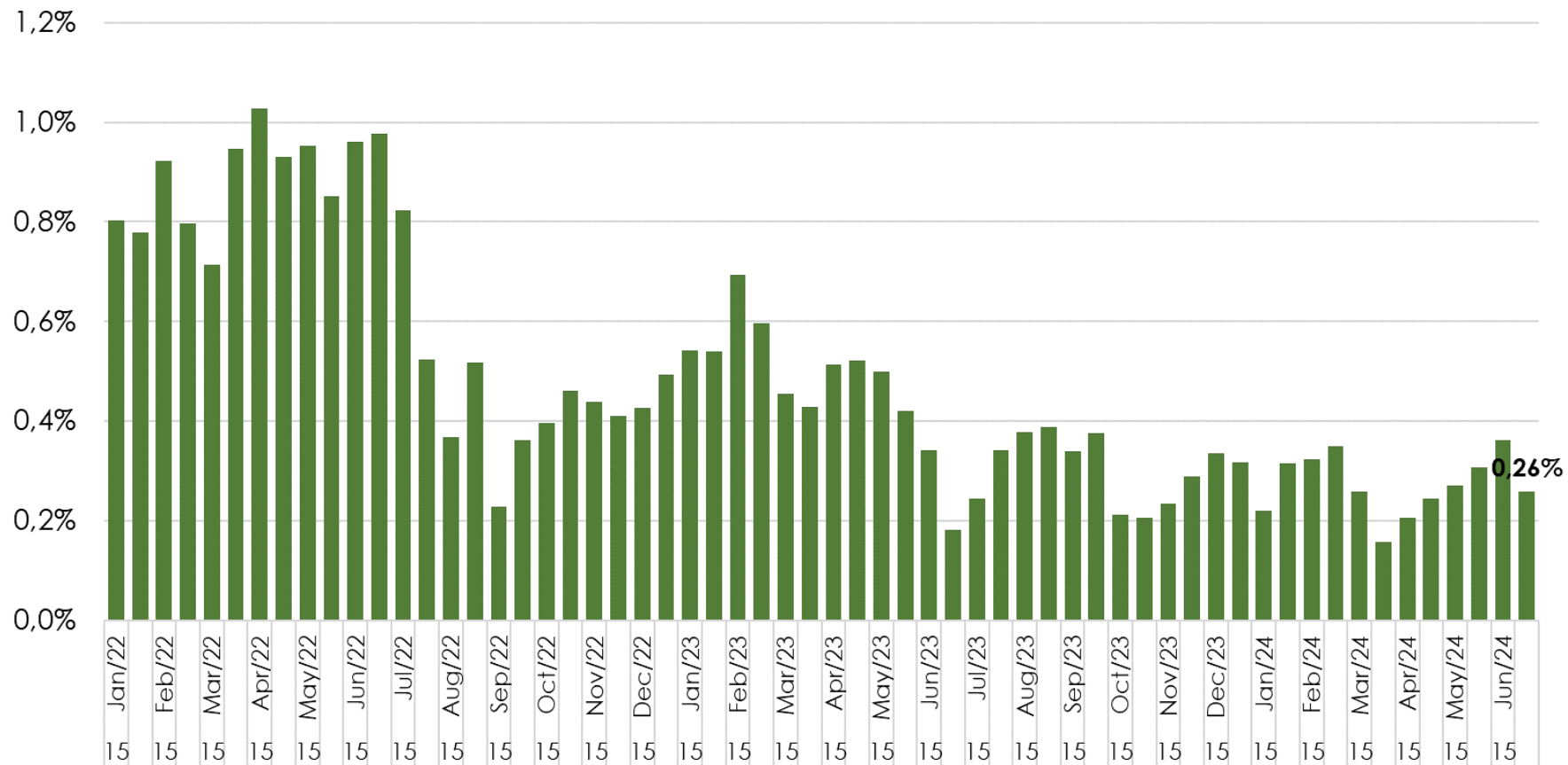


EX3 Core

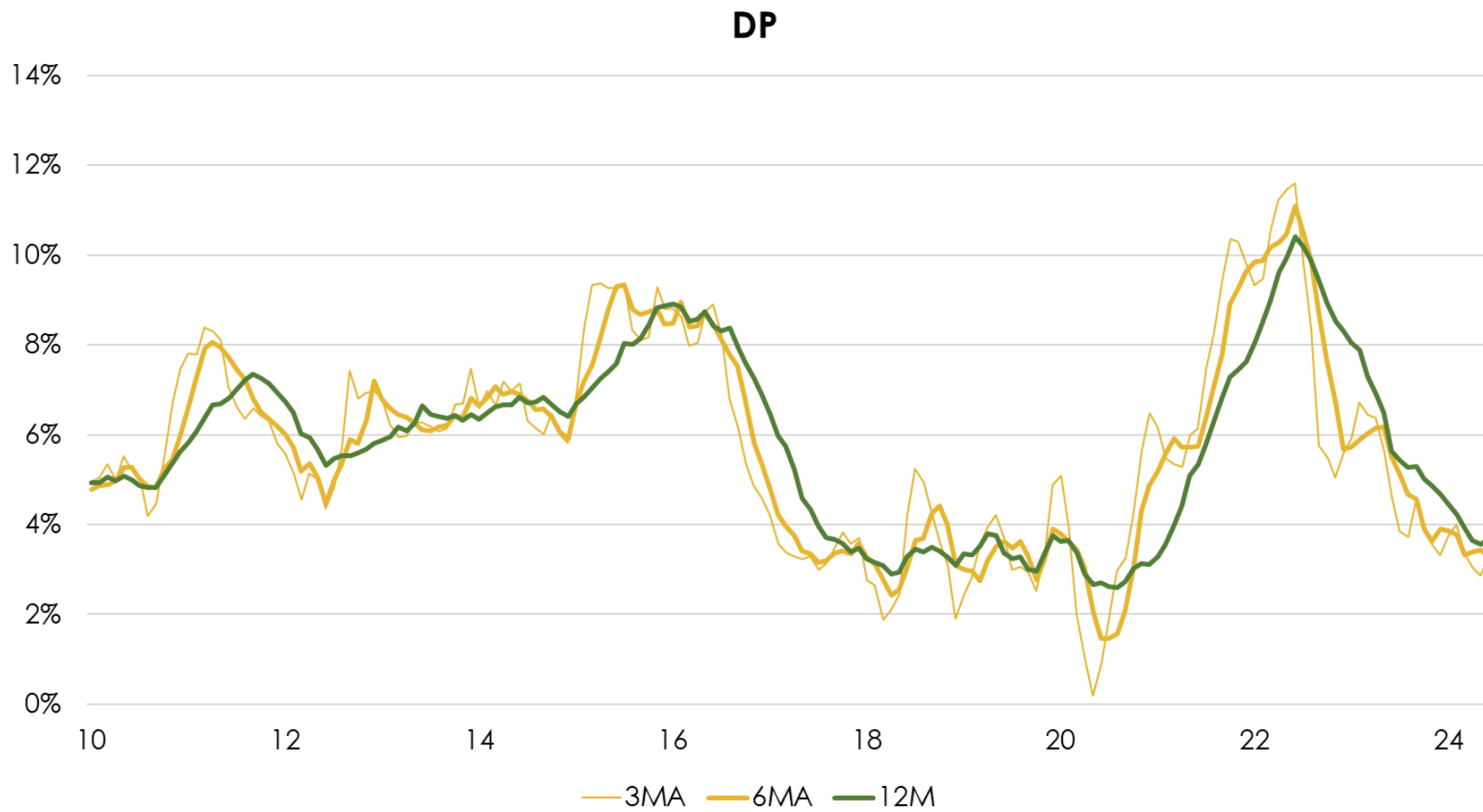


DP Core

DP (MoM SA)

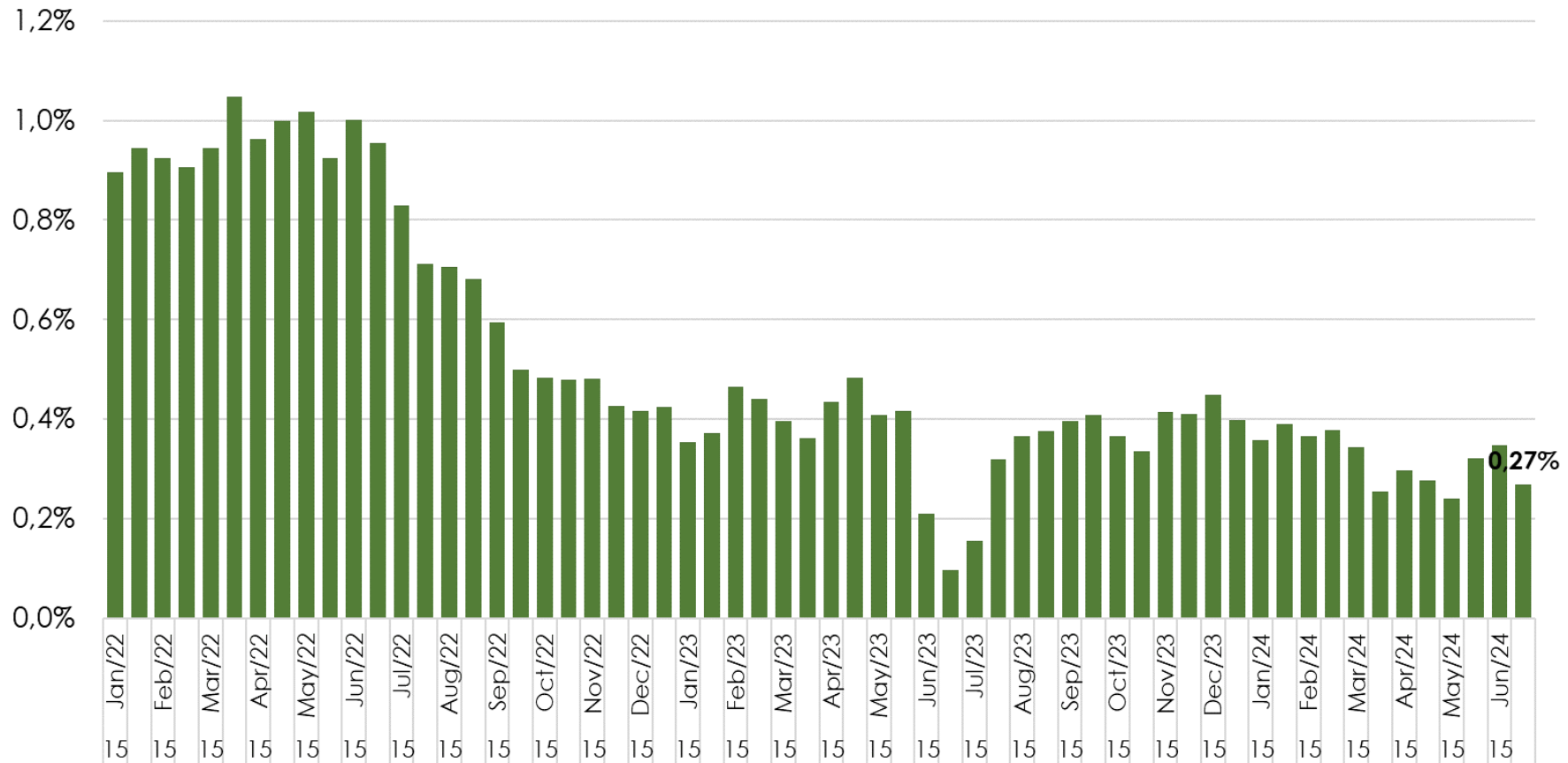


DP Core

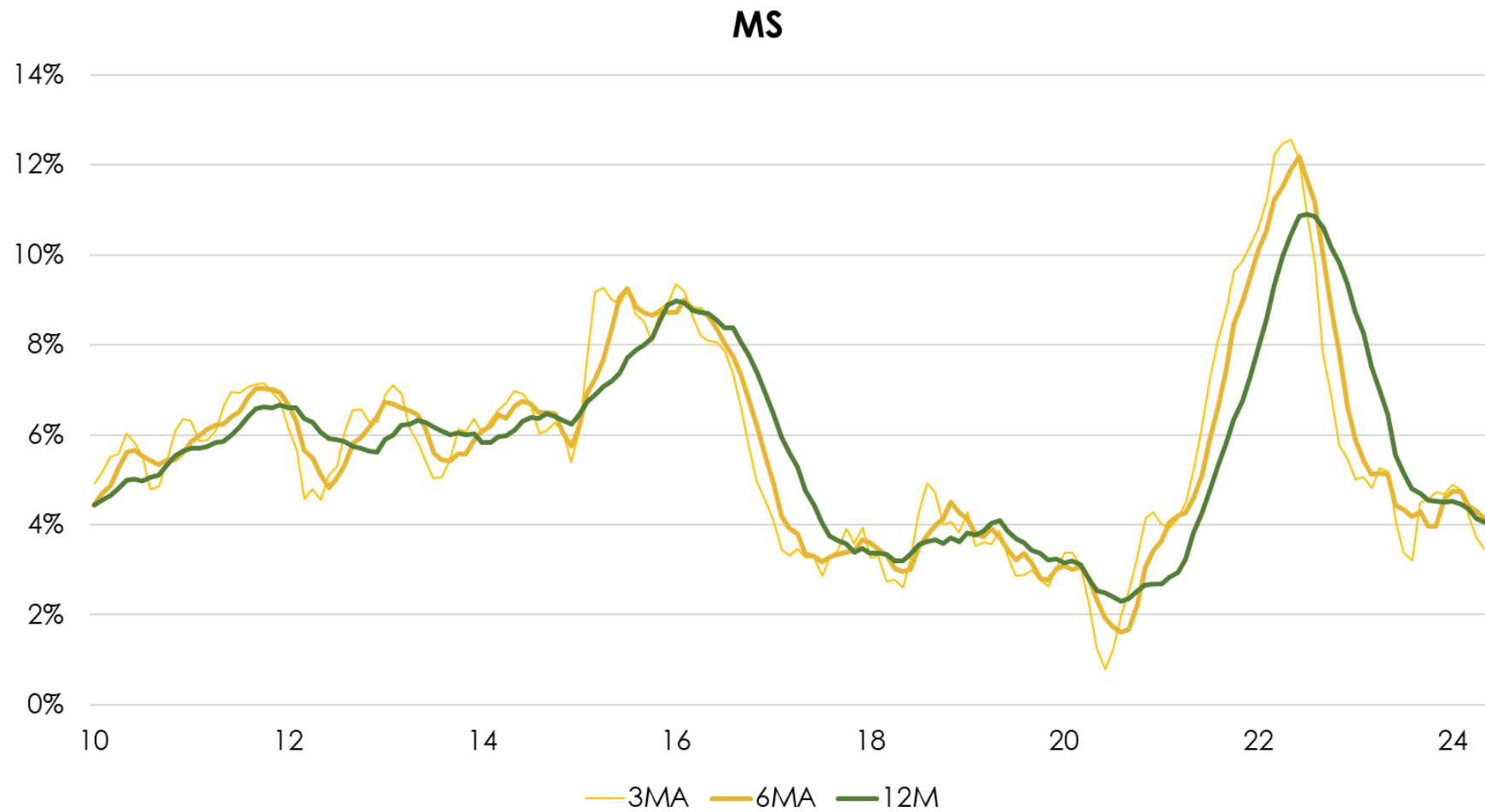


MS Core

MS (MoM SA)

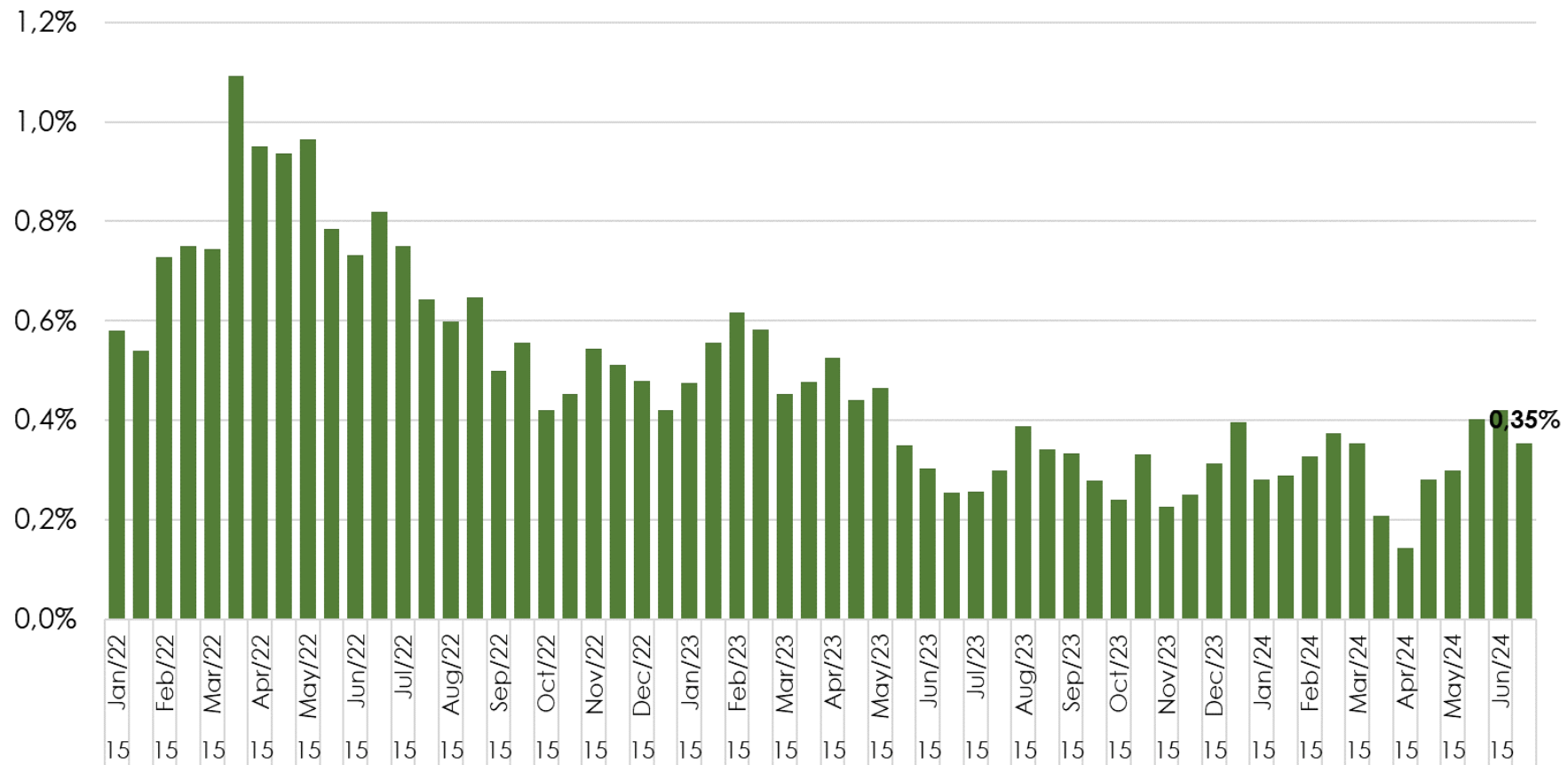


MS Core

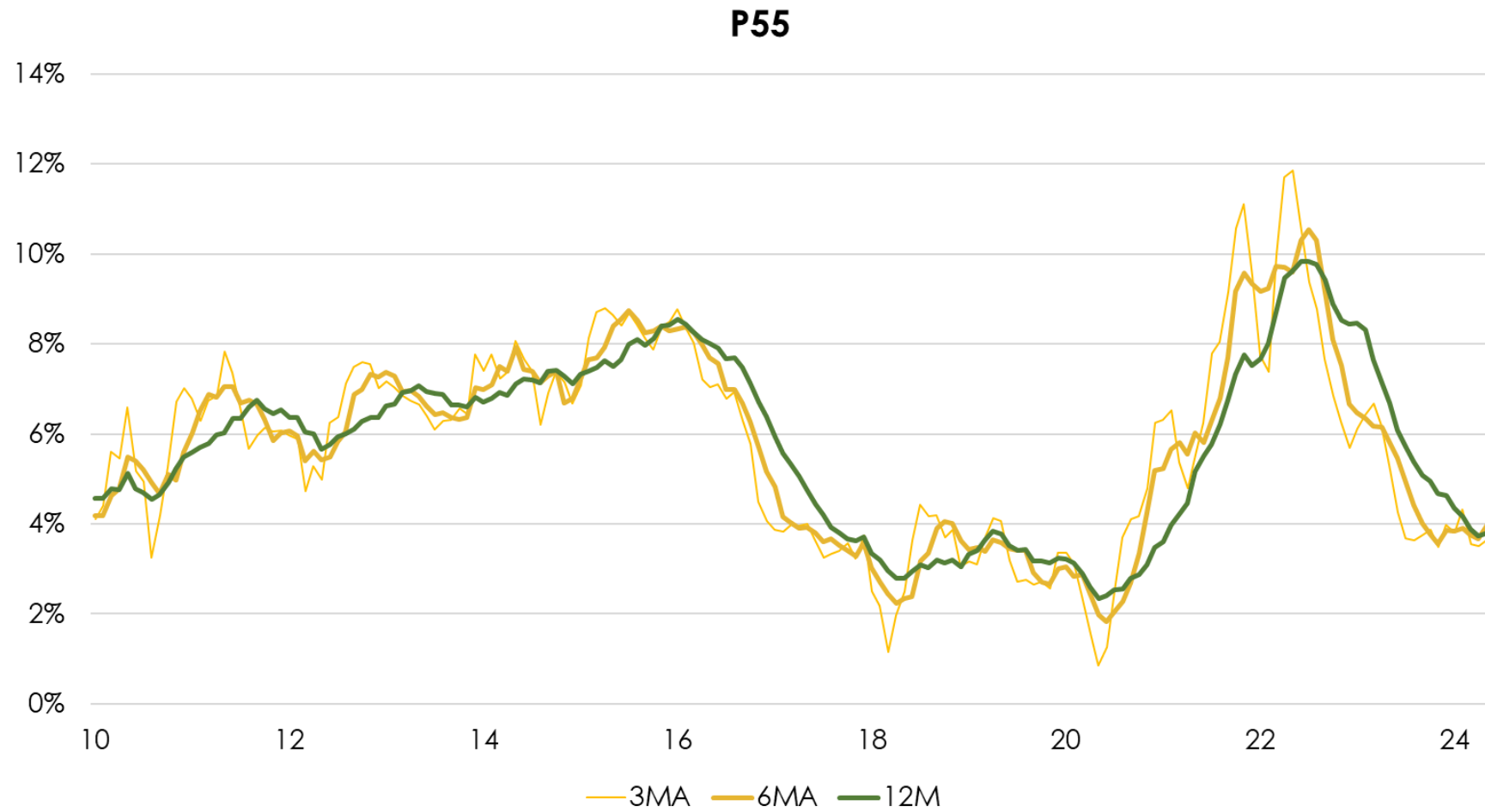


P55 Core

P55 (MoM SA)

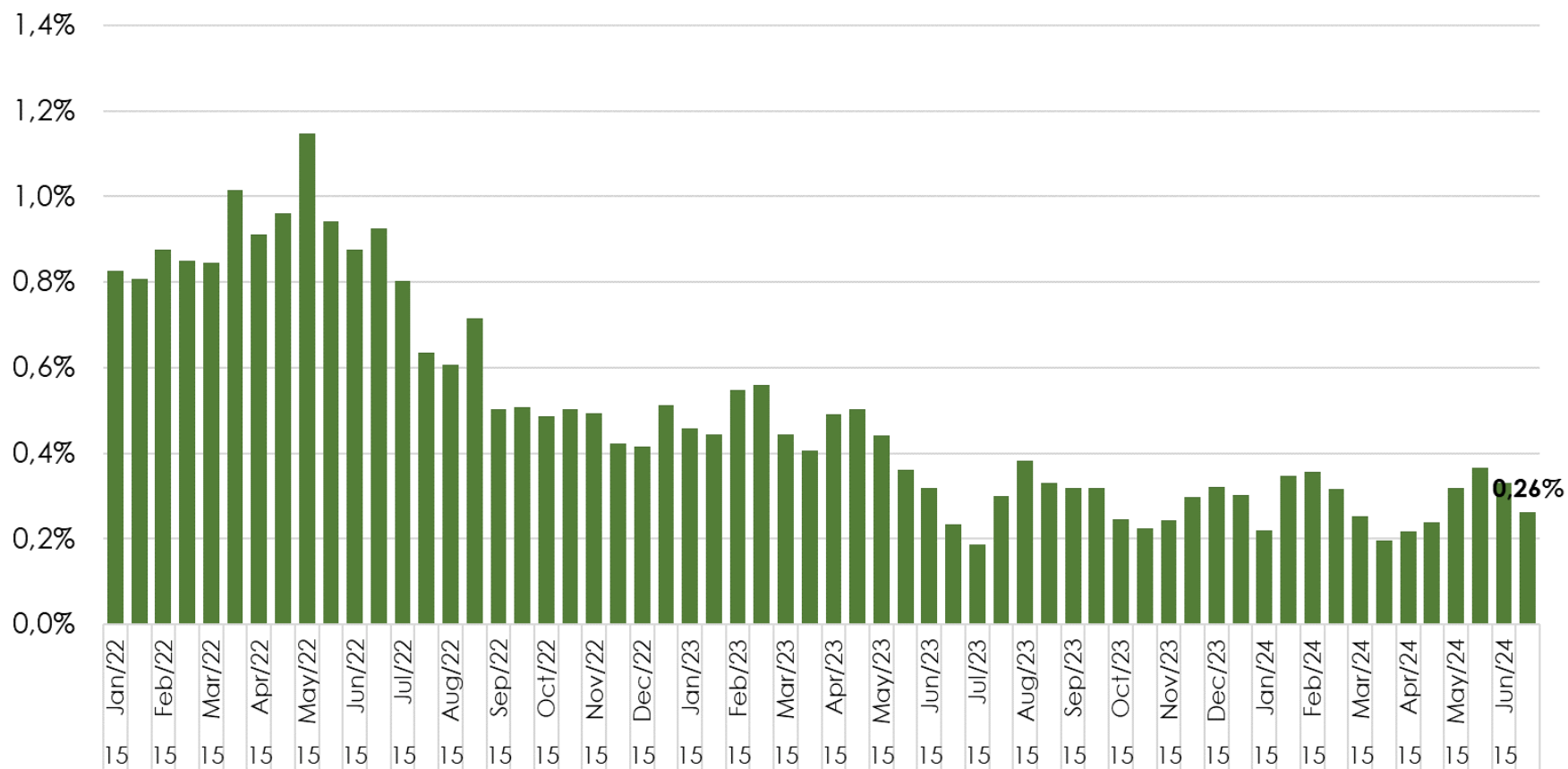


P55 Core

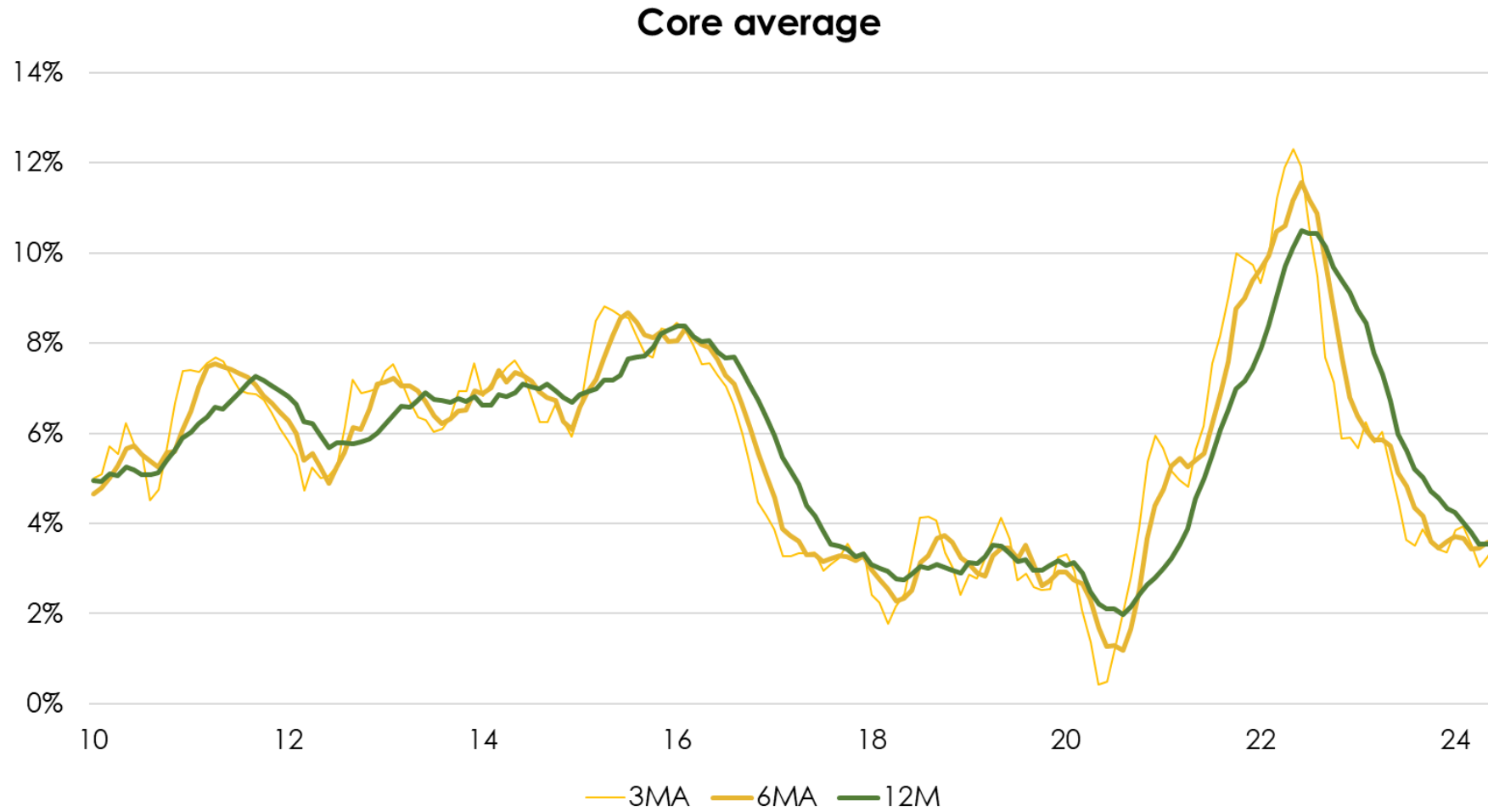


Core average

Core average (MoM SA)

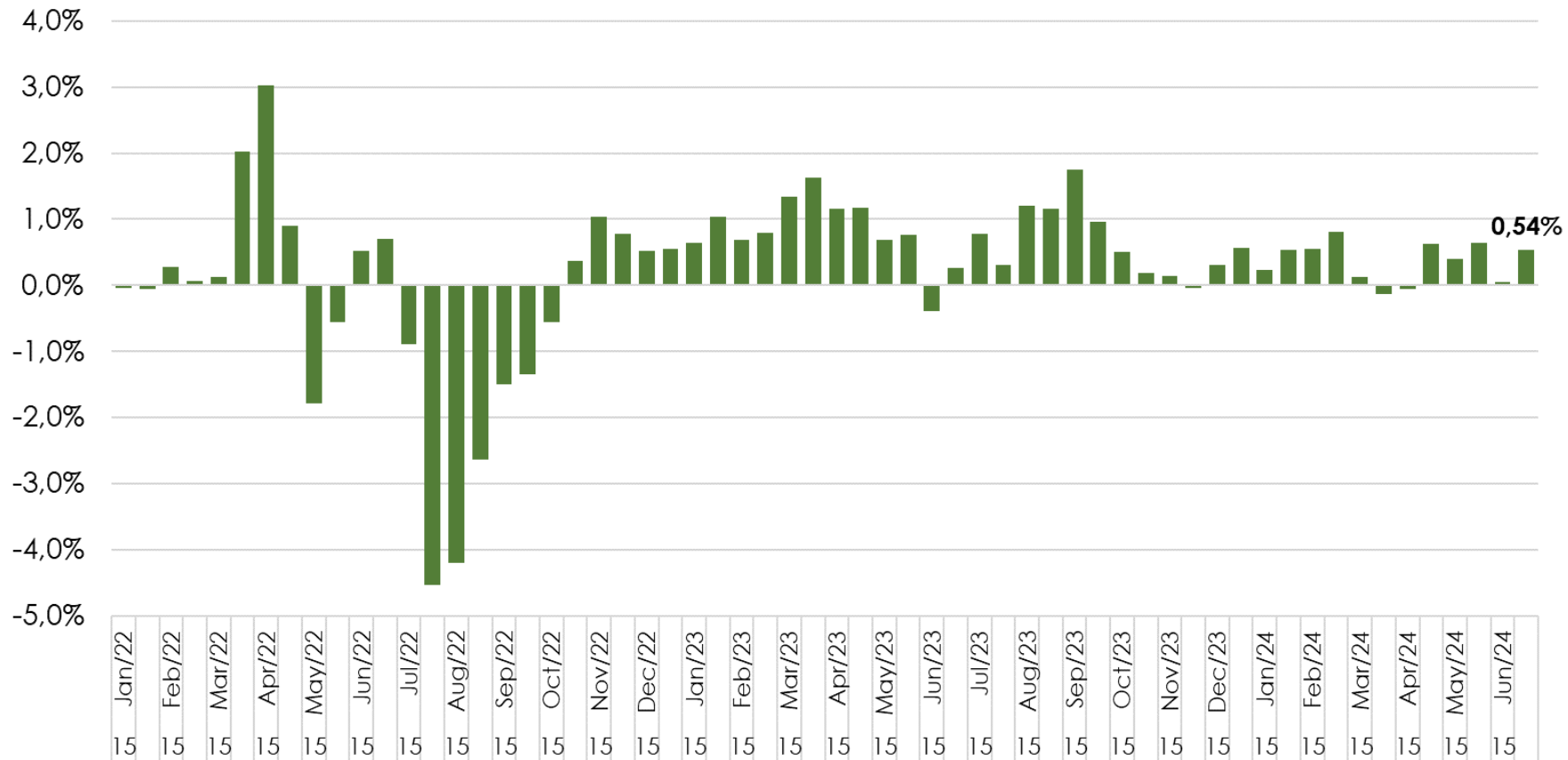


Core average

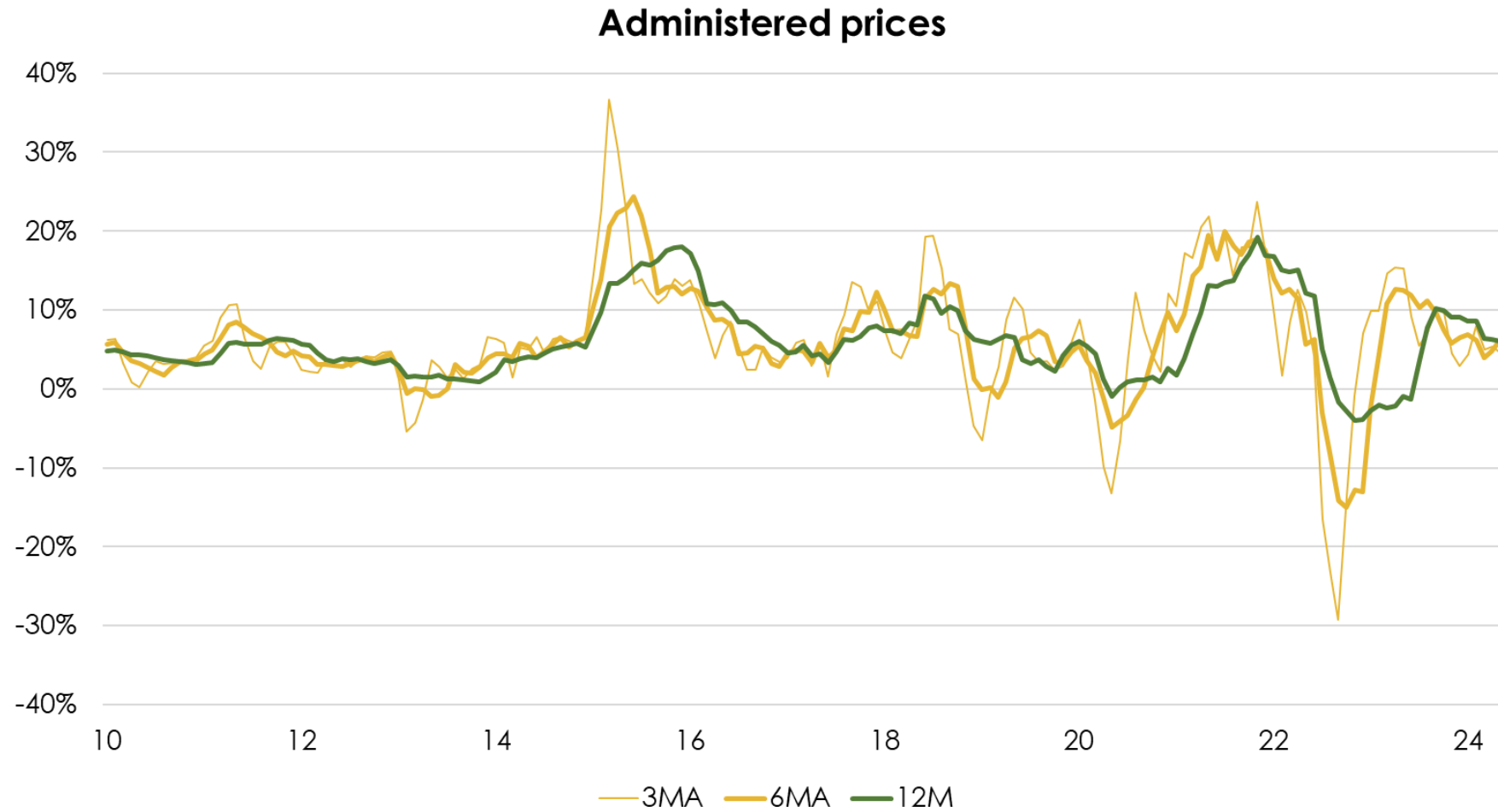


Administered prices

Administered prices (MoM SA)

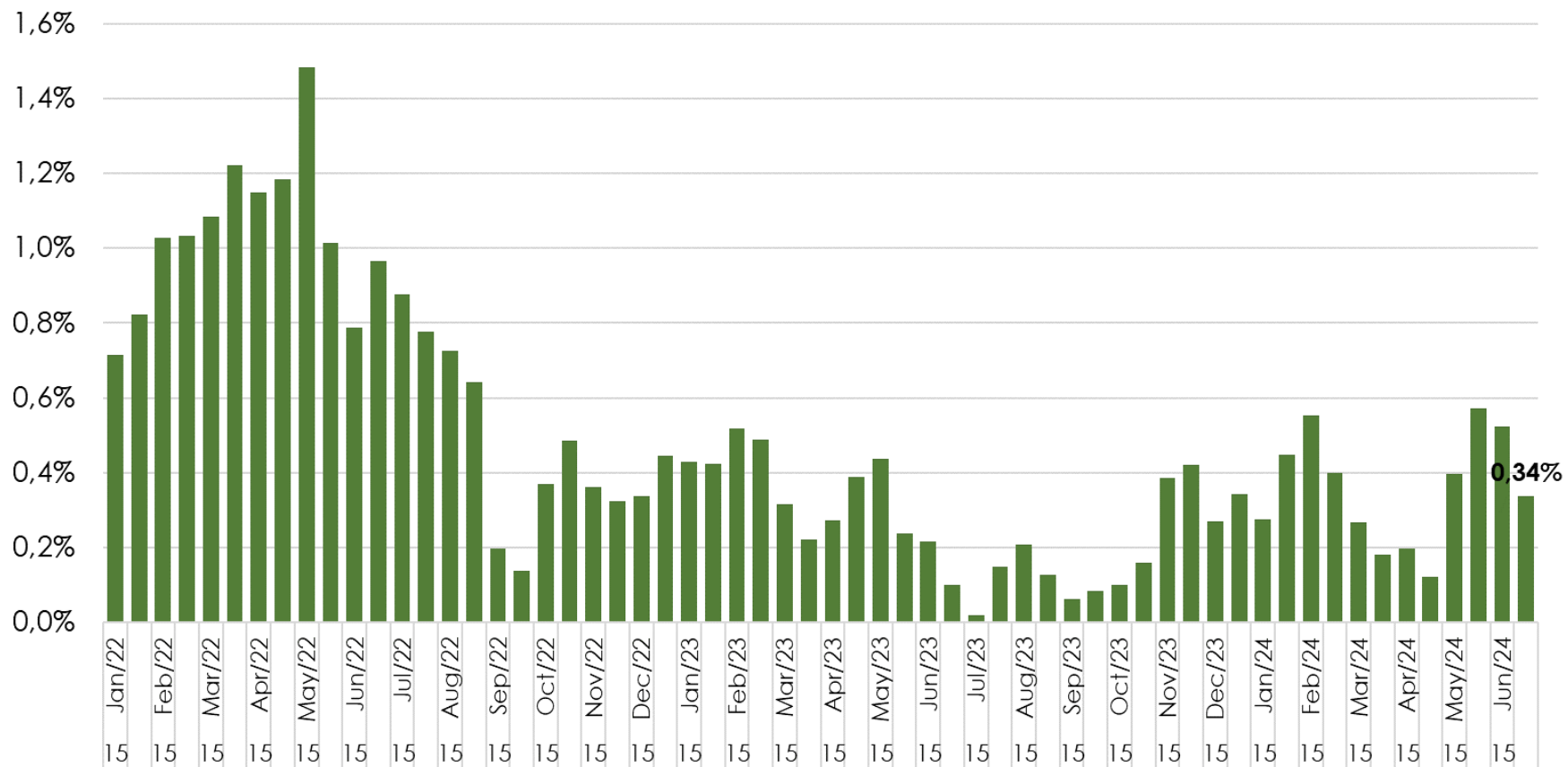


Administered prices



Free prices

Free prices (MoM SA)

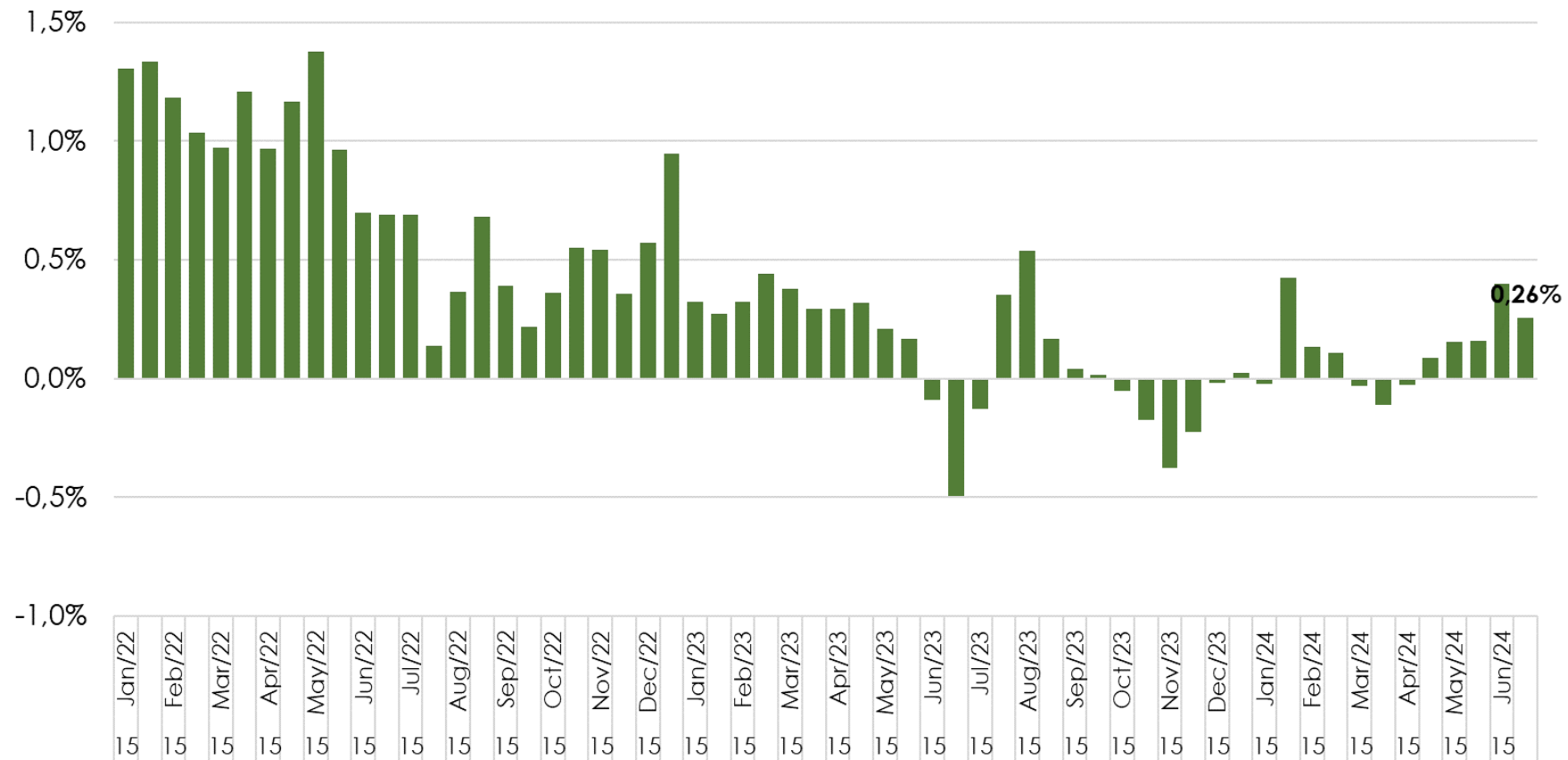


Free prices



Industrial goods

Industrial goods (MoM SA)

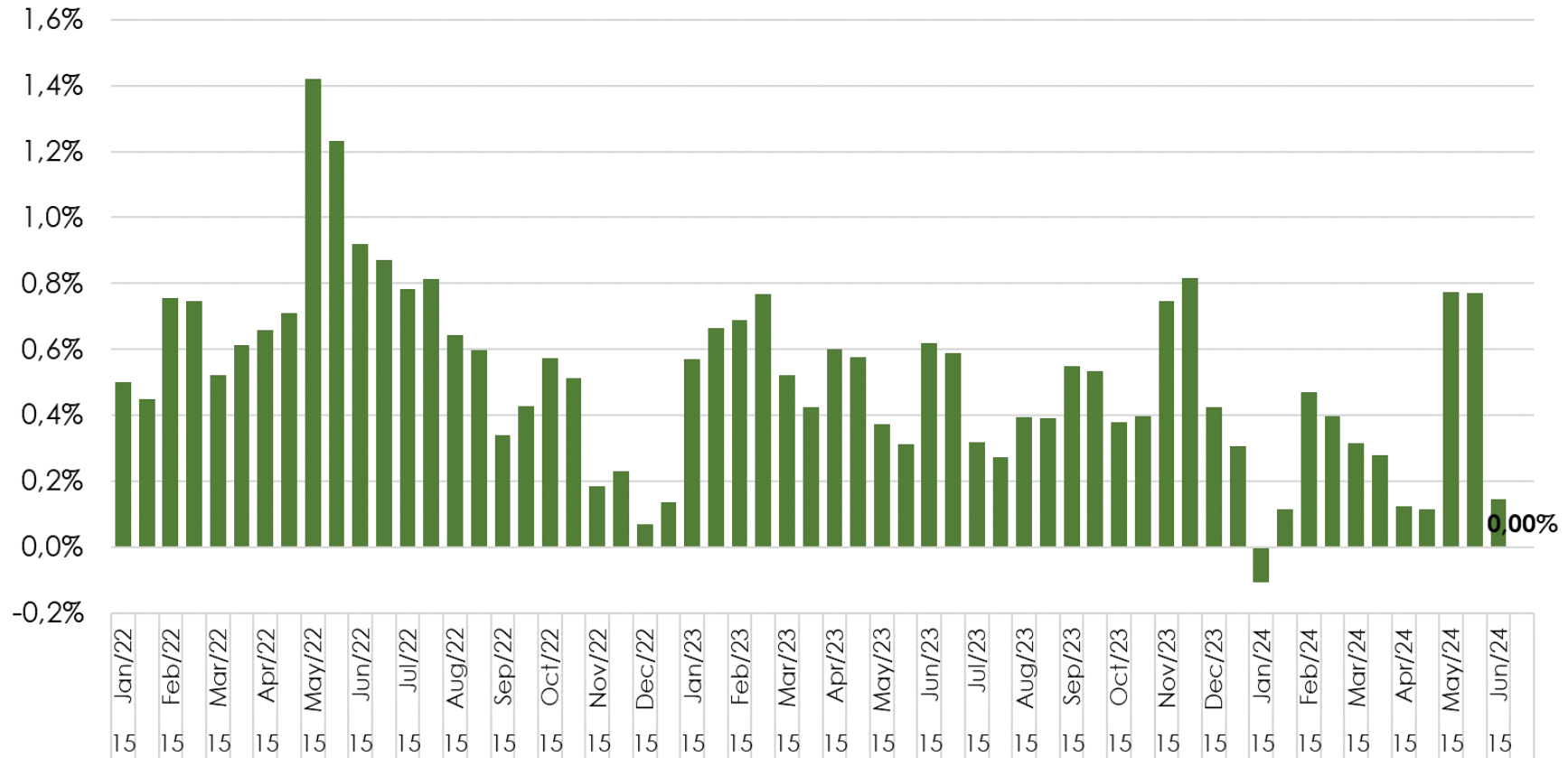


Industrial goods

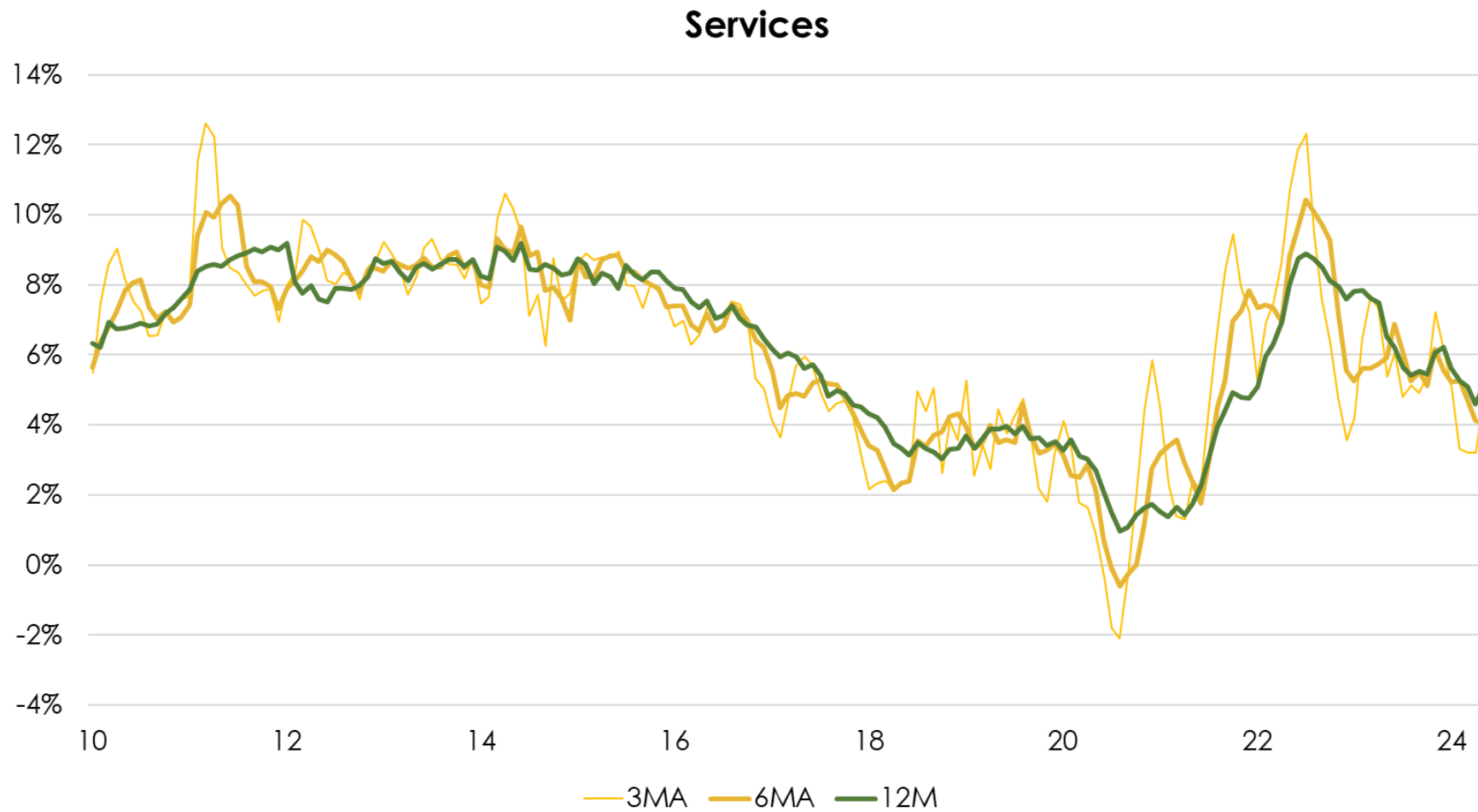


Services

Services (MoM SA)

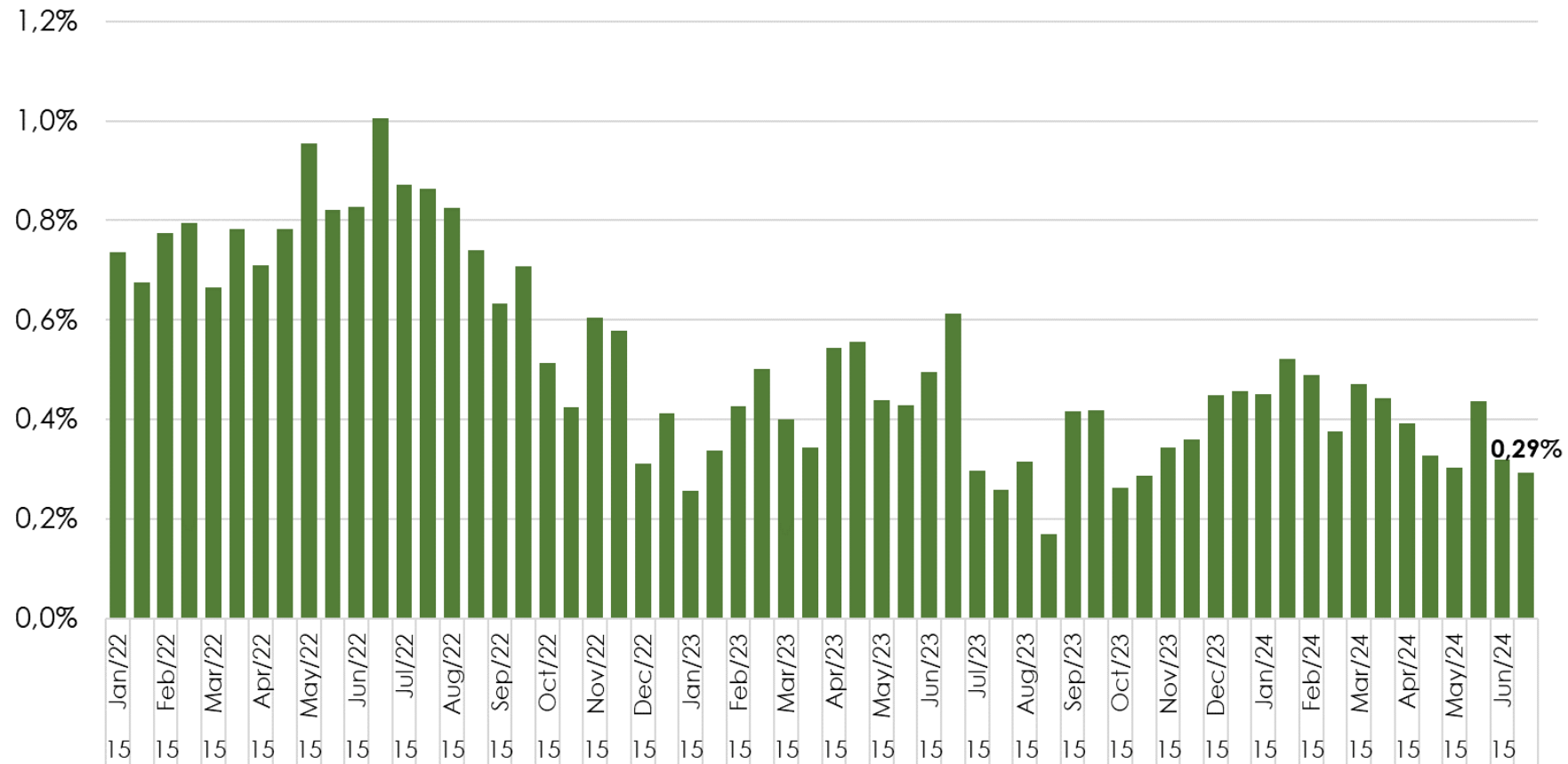


Services

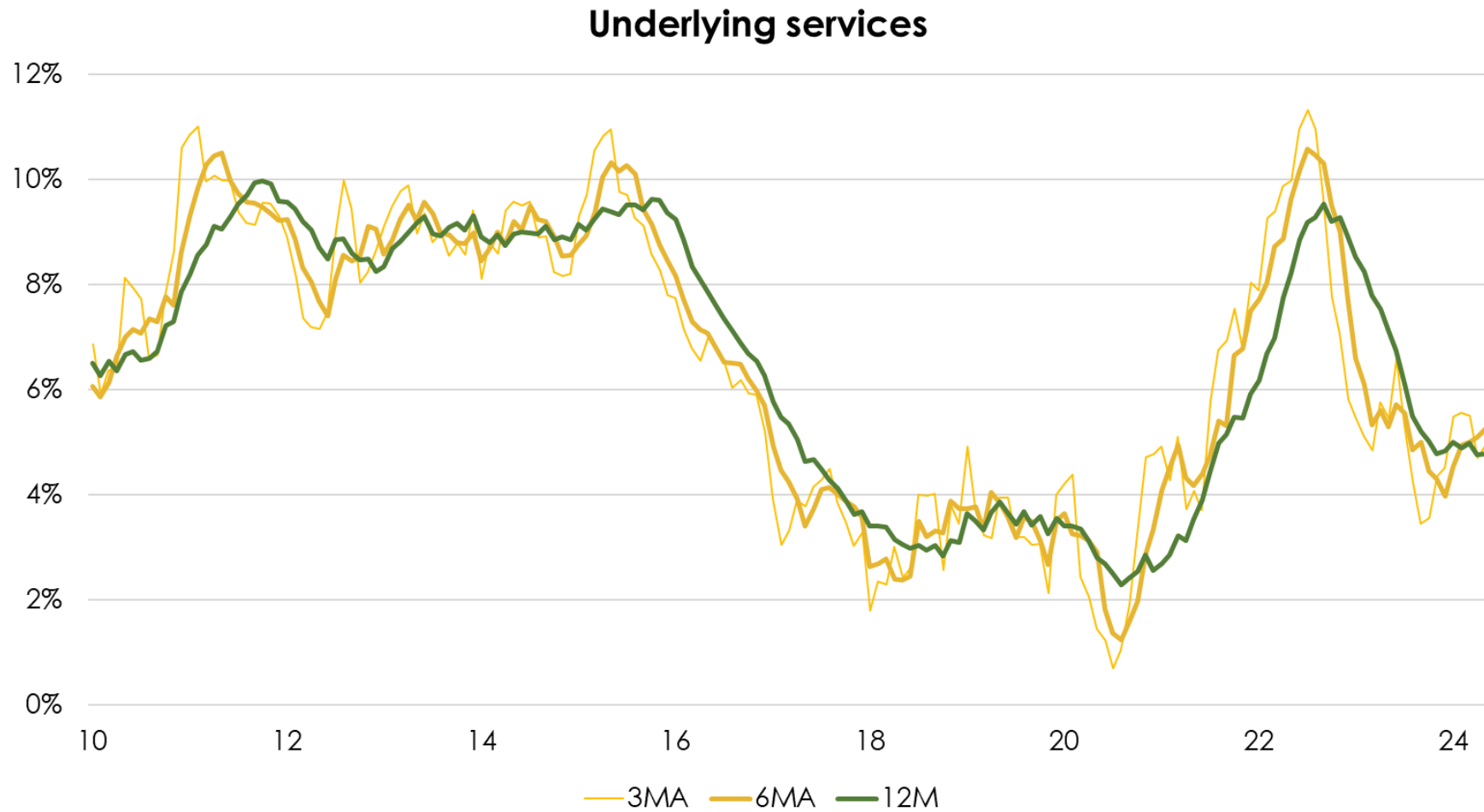


Underlying Services

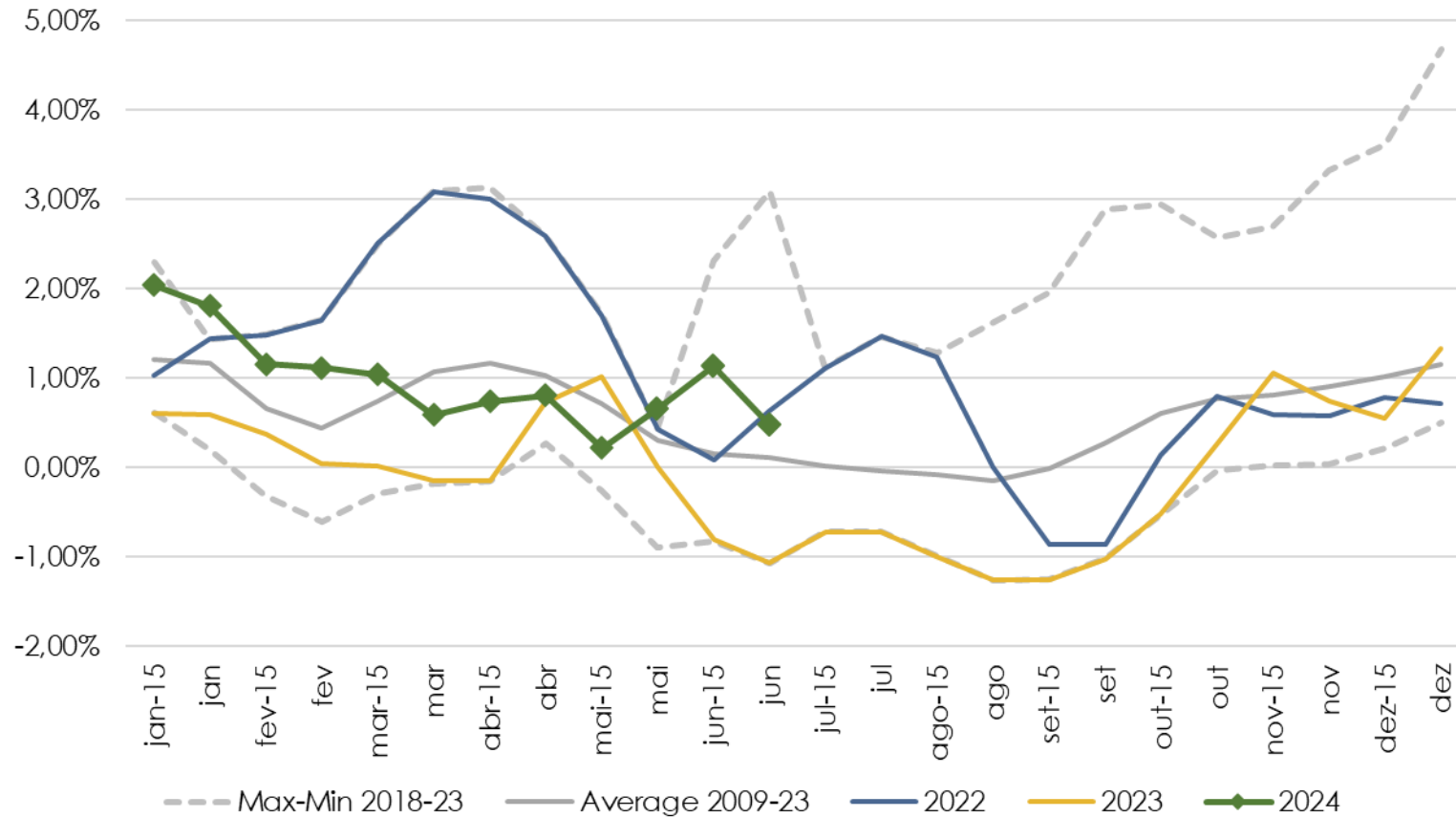
Underlying services (MoM SA)



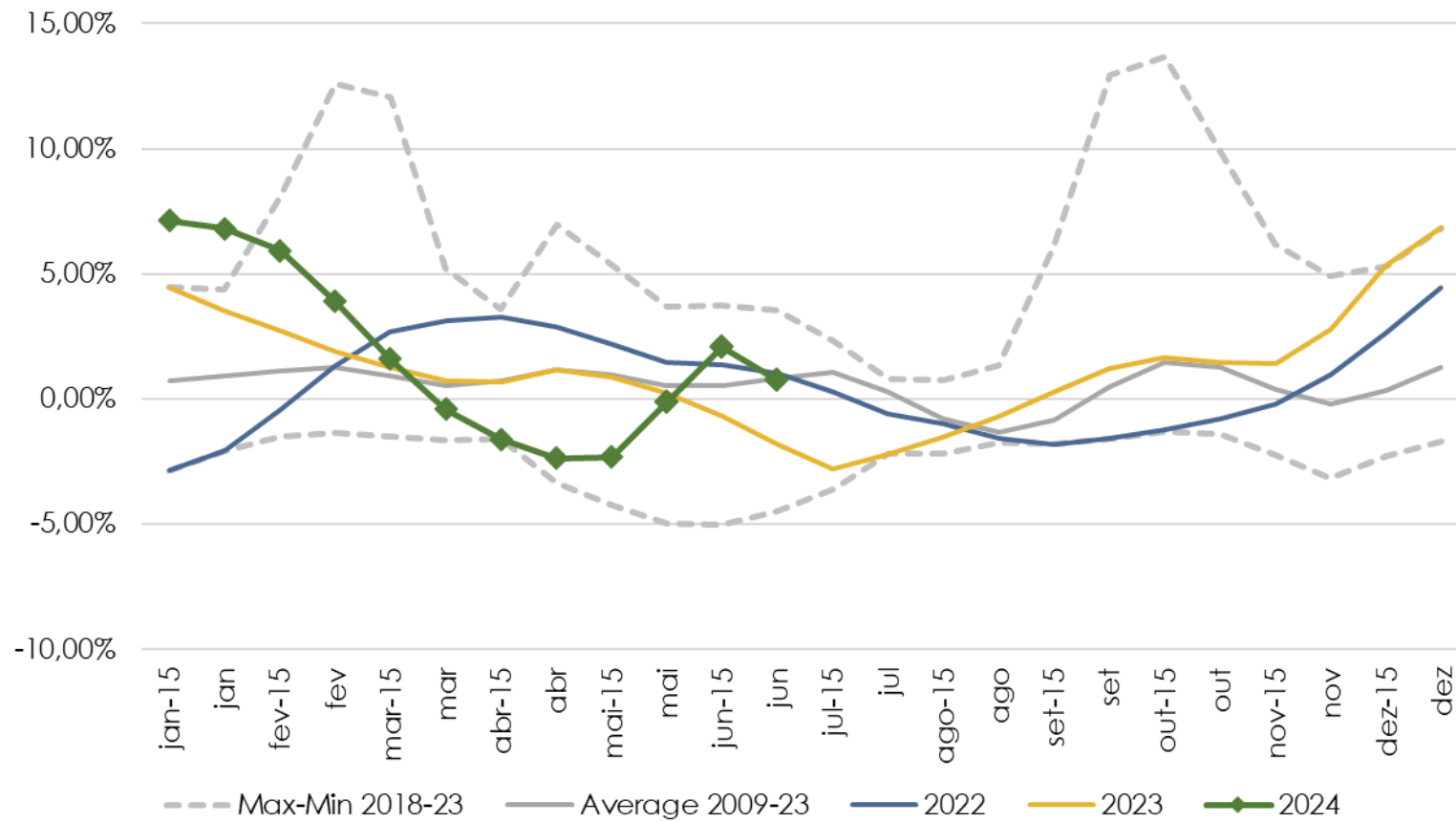
Underlying Services



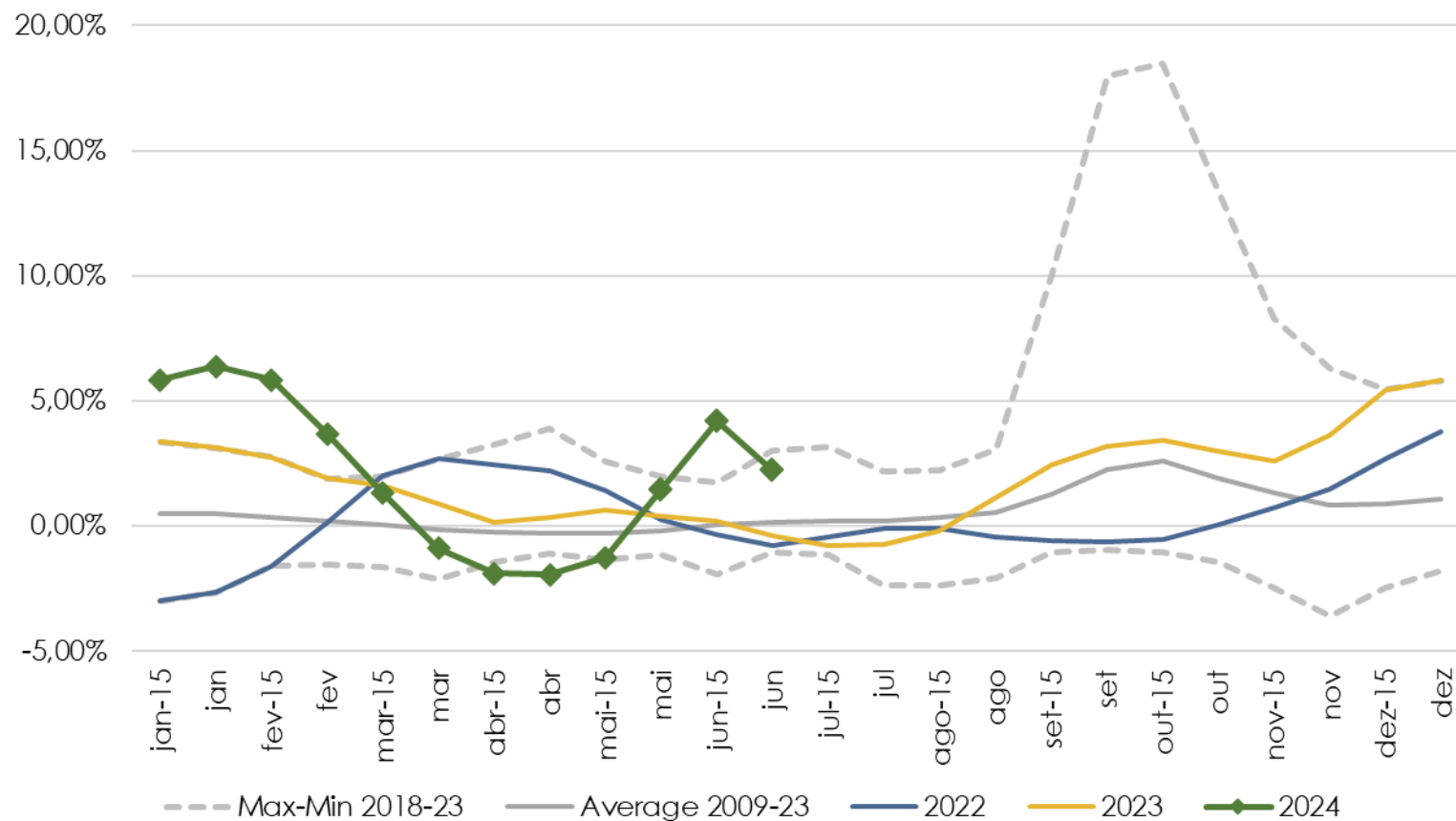
Food at home



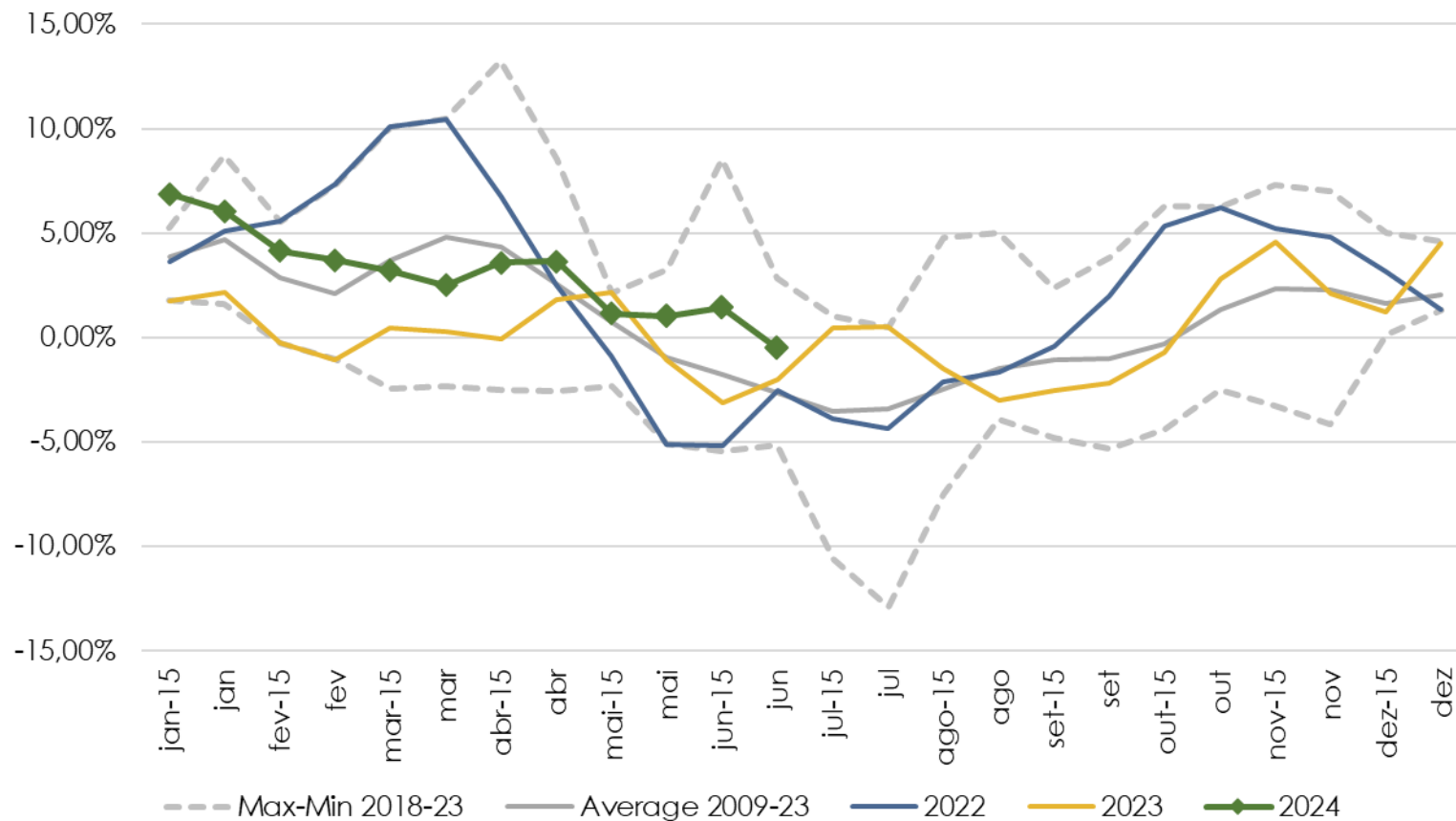
Cereals



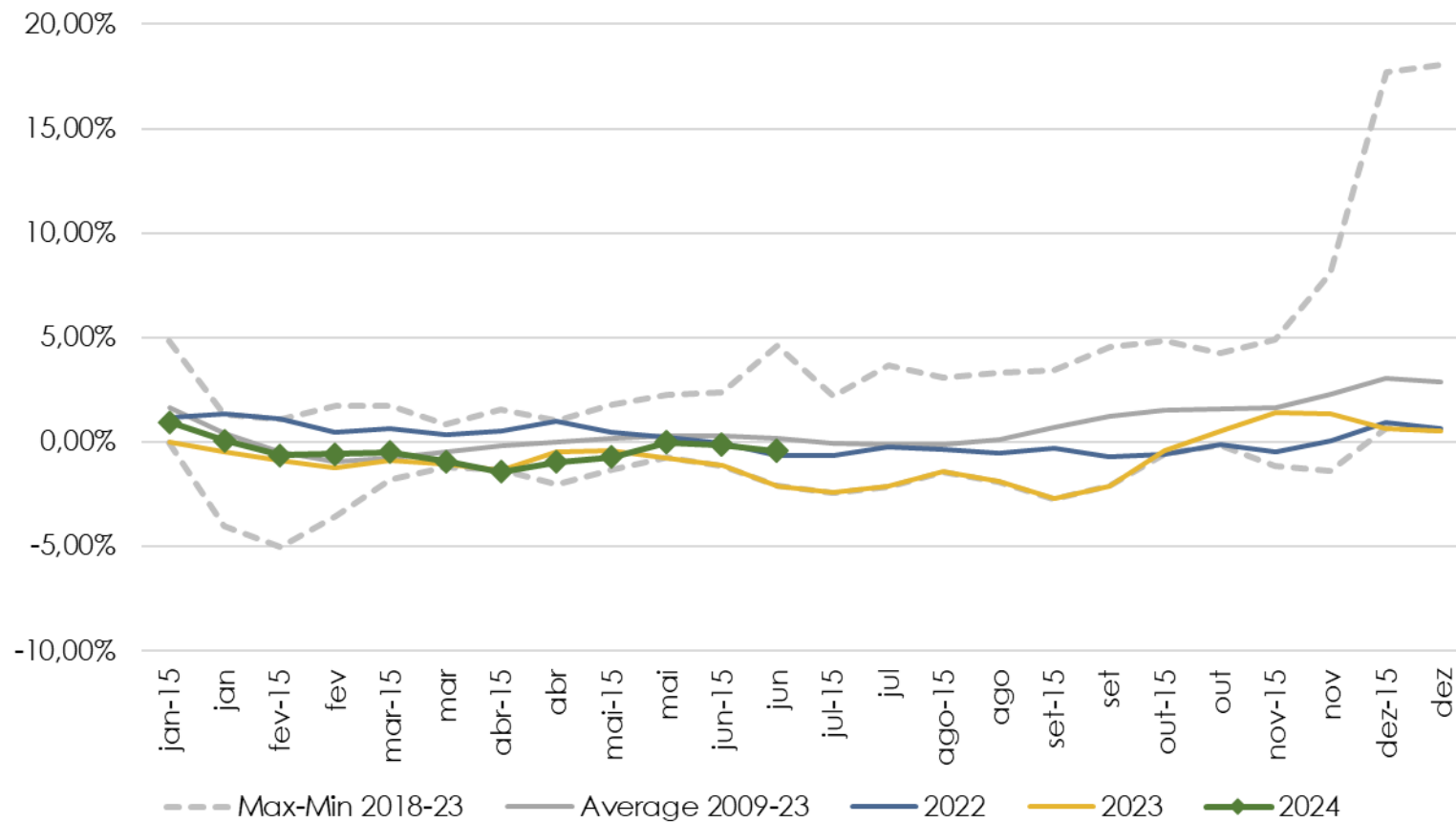
Rice



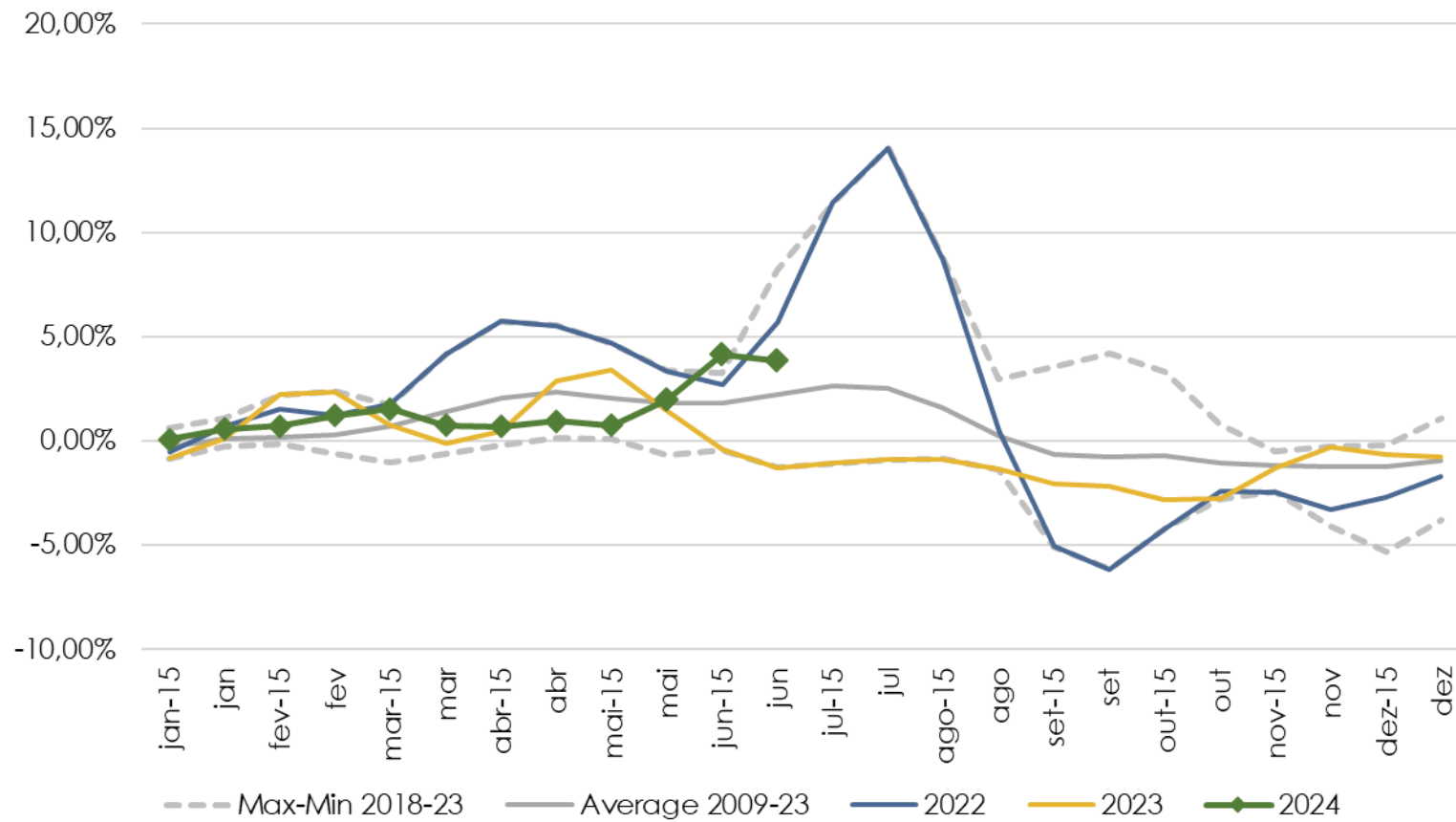
Fresh Products



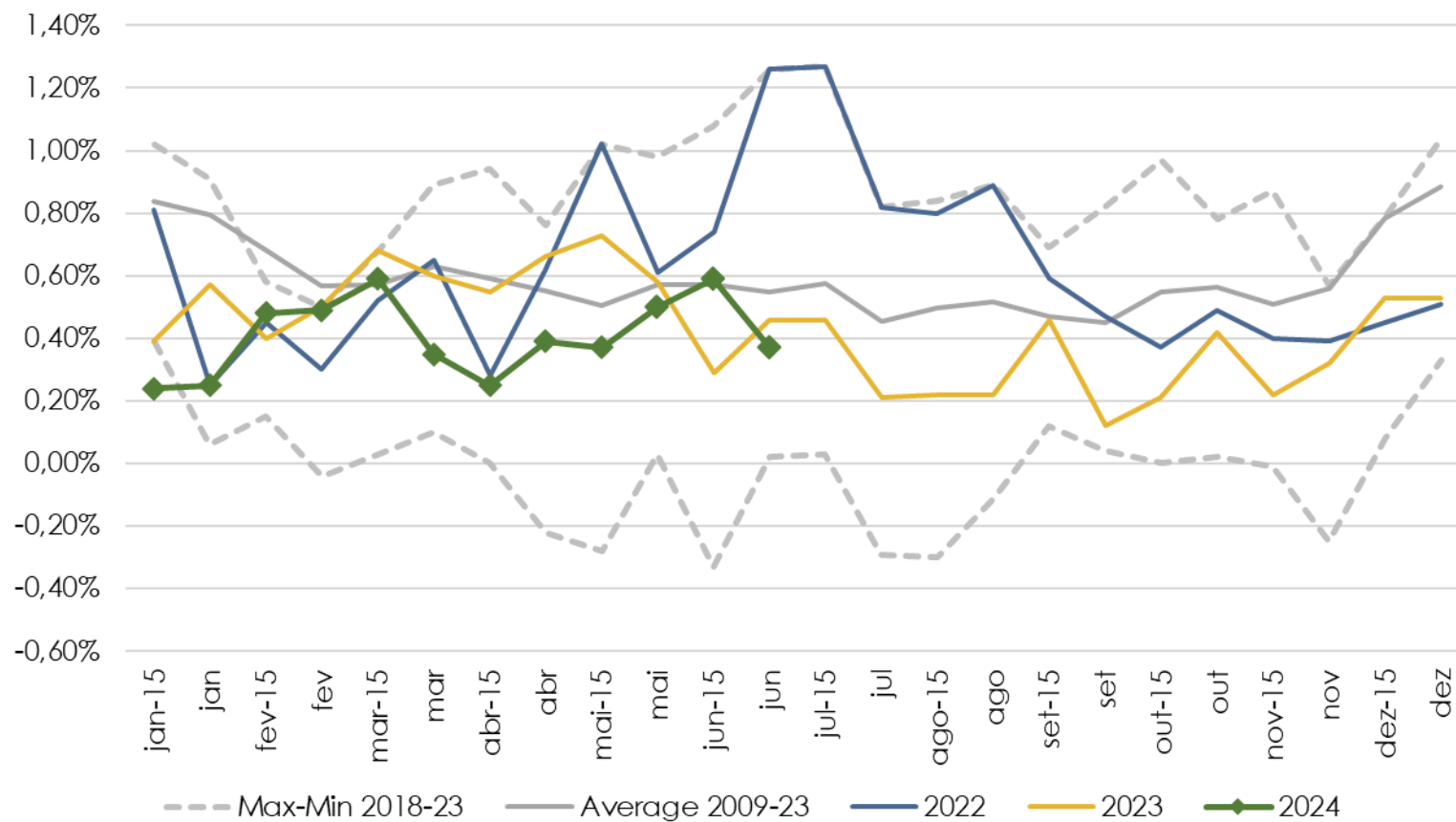
Meat



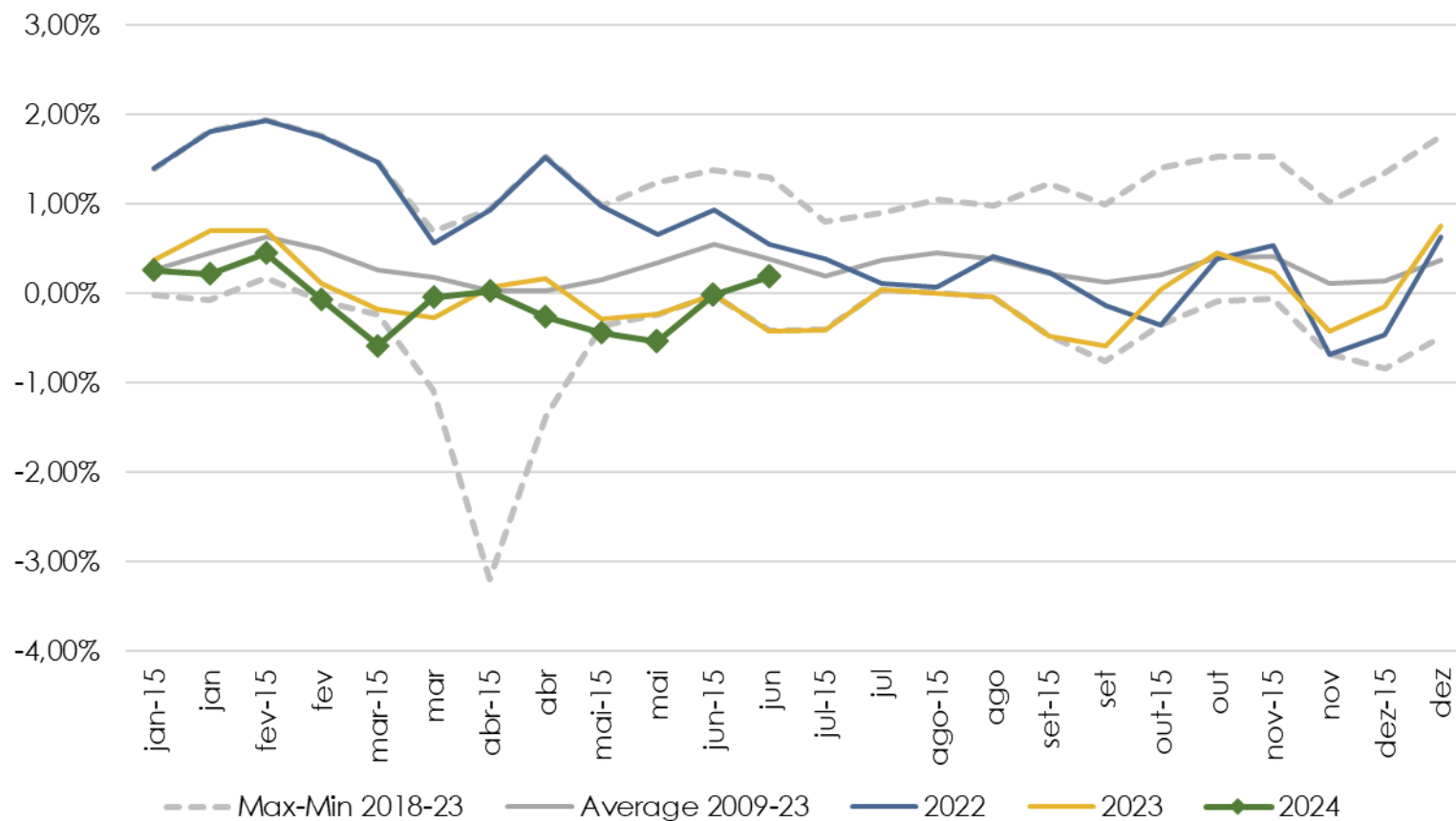
Milk and dairy products



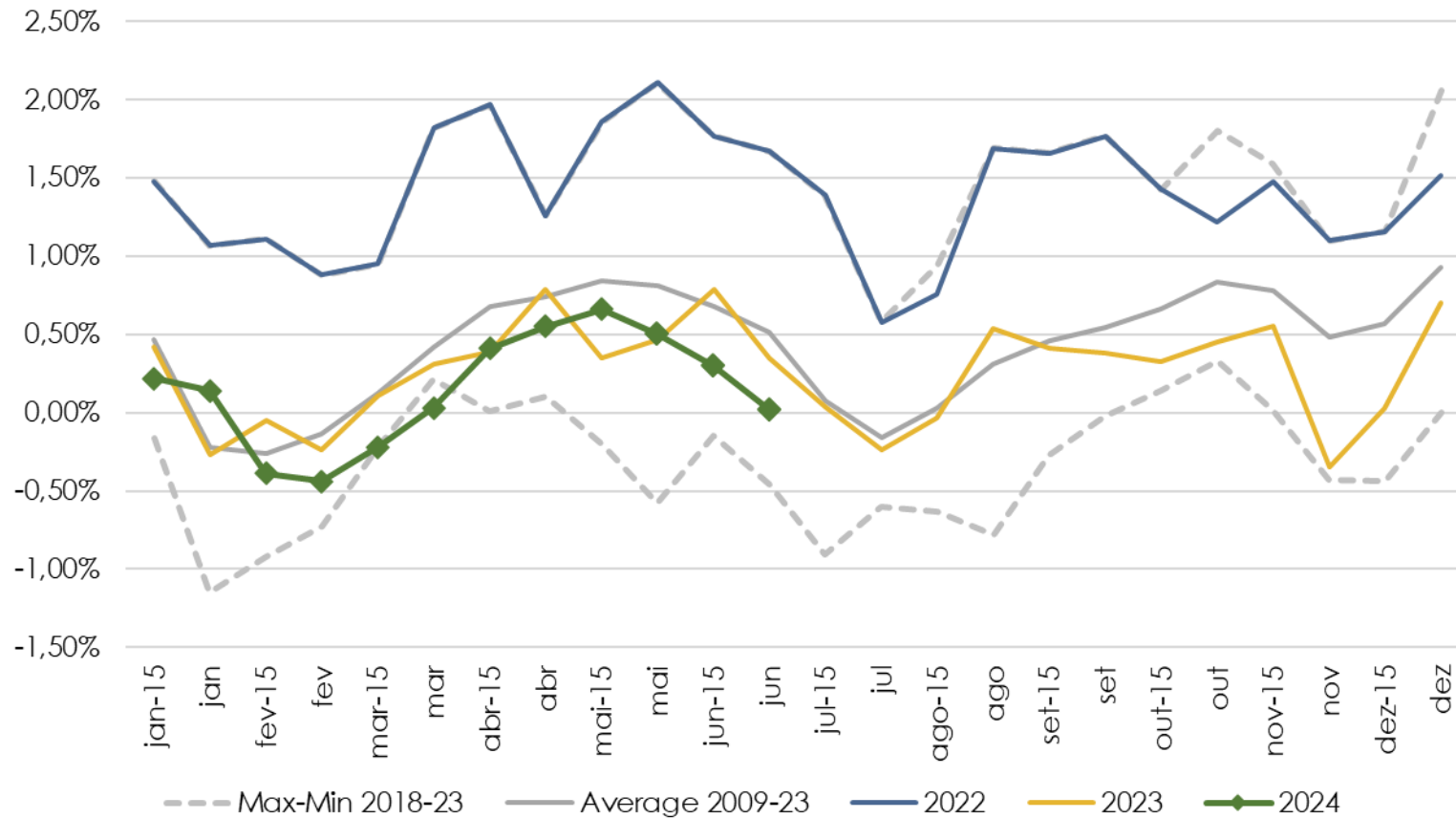
Food away from home



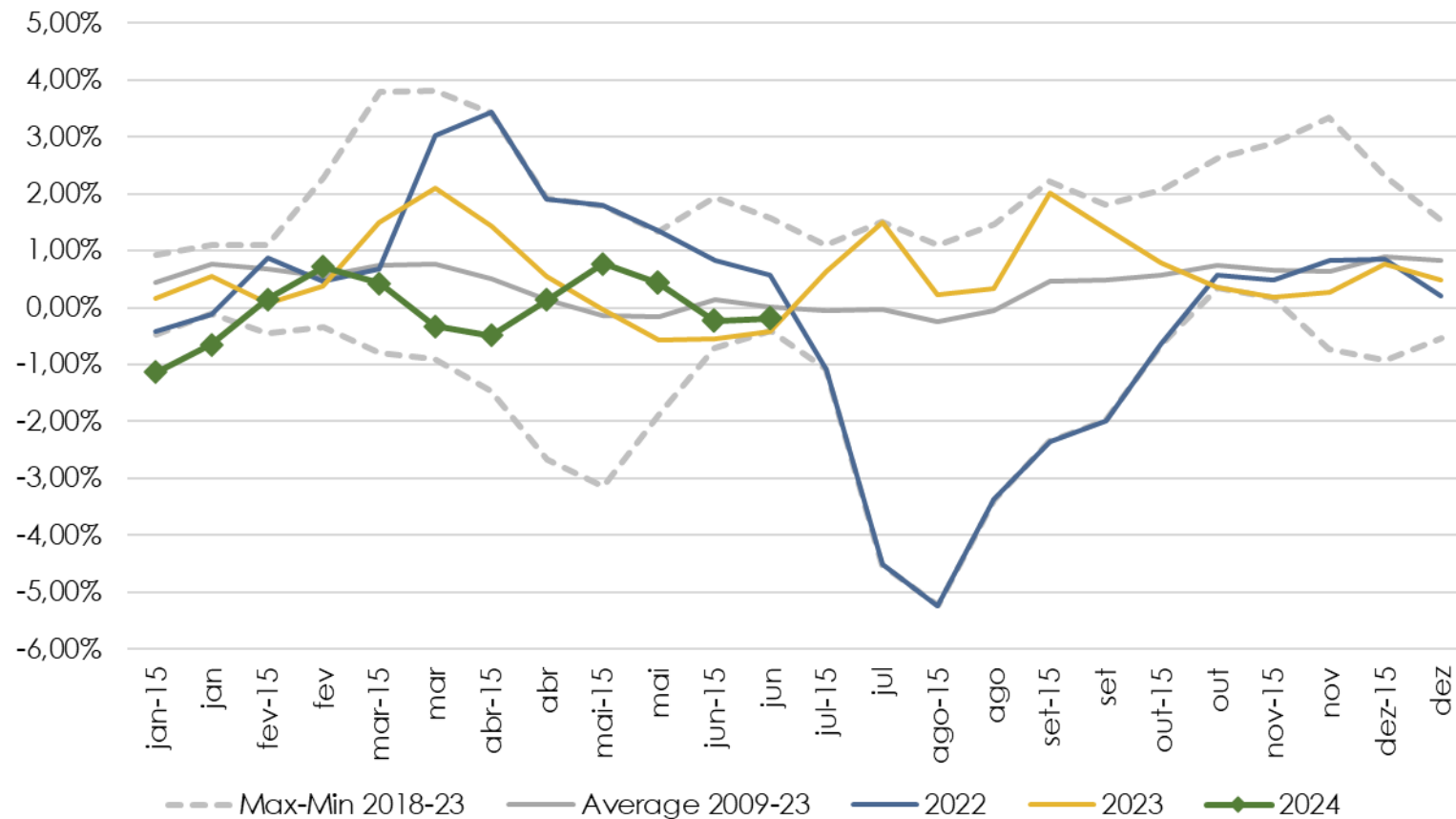
Household furnishings and supplies



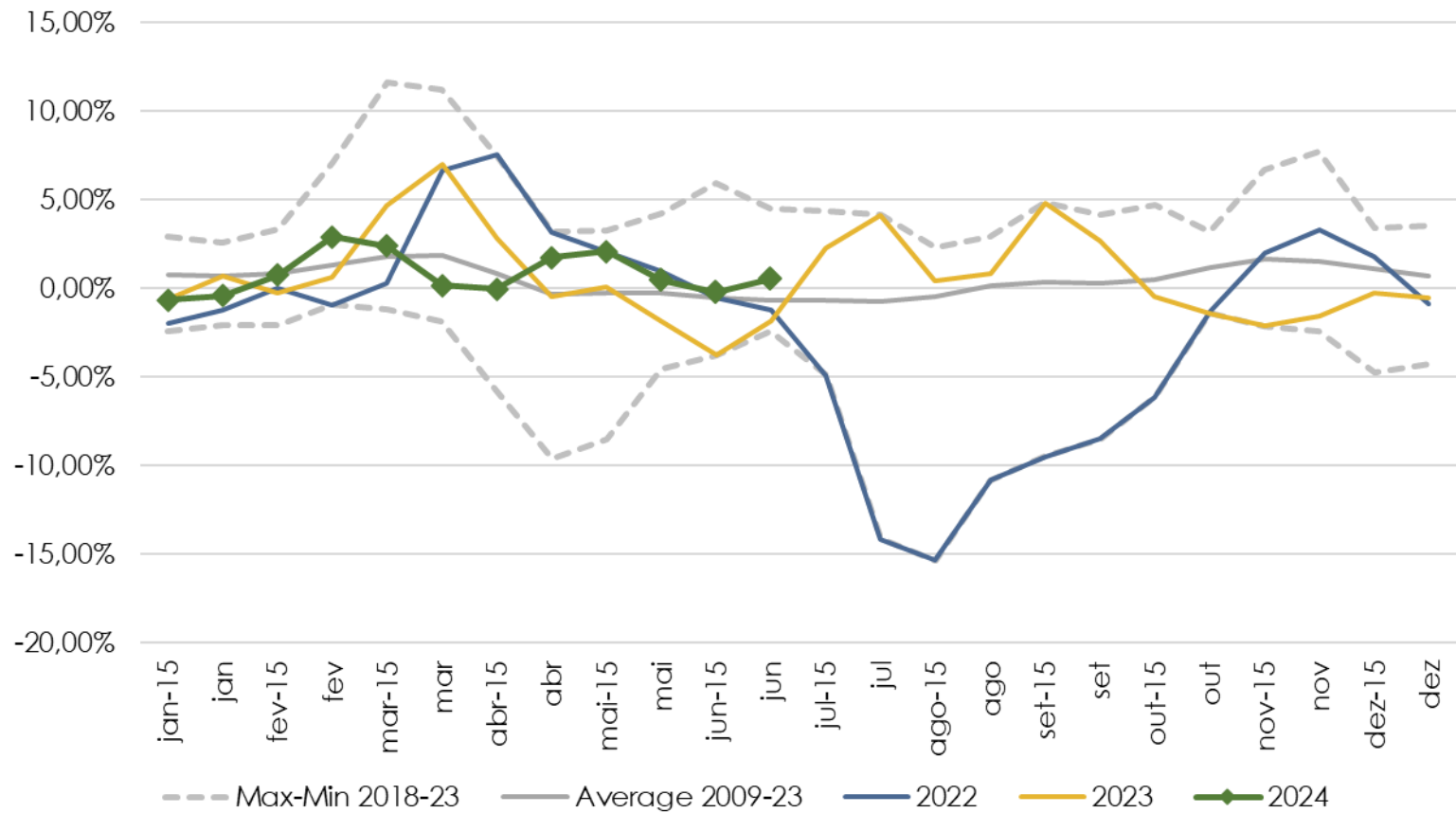
Apparel



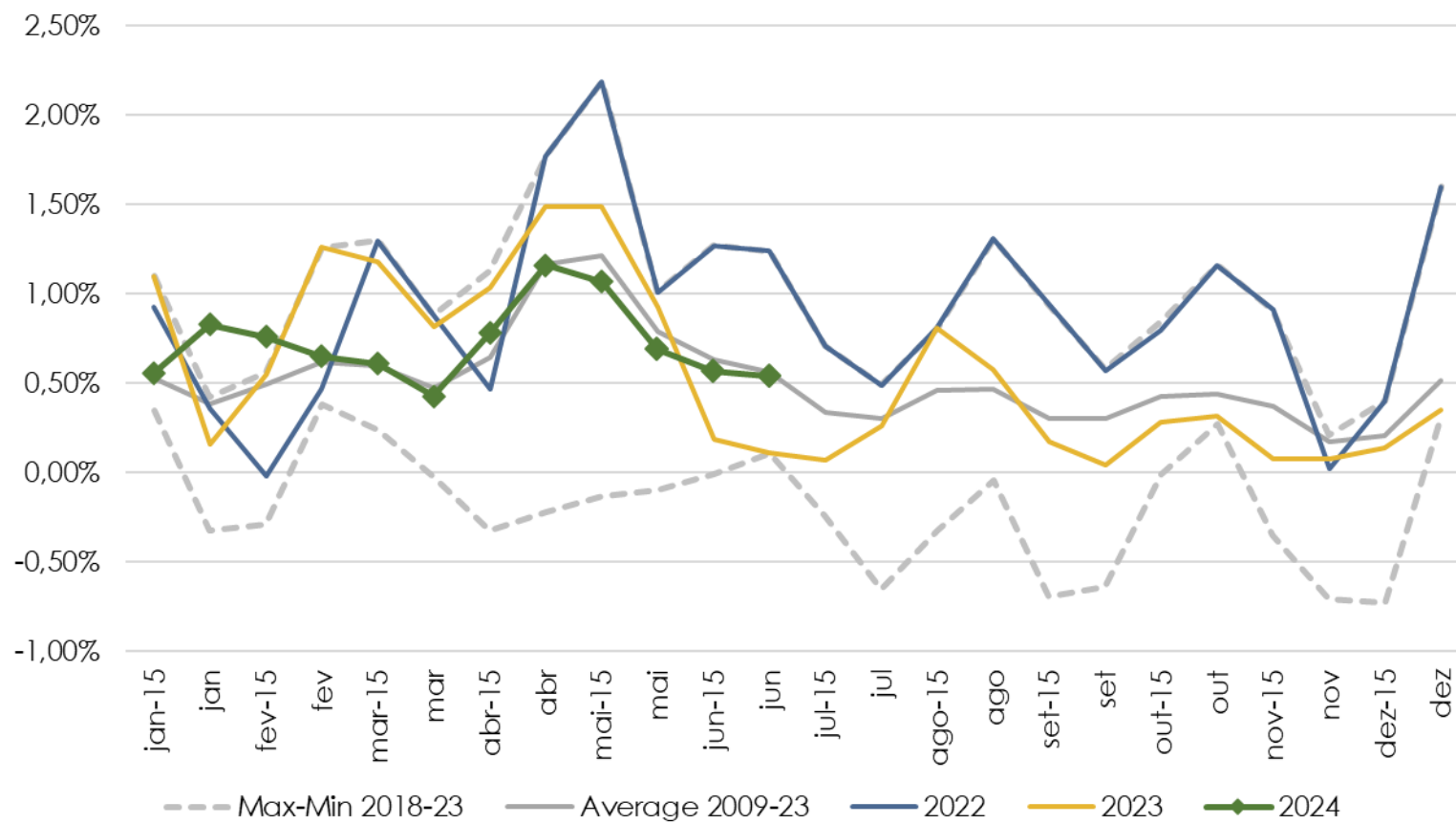
Transport



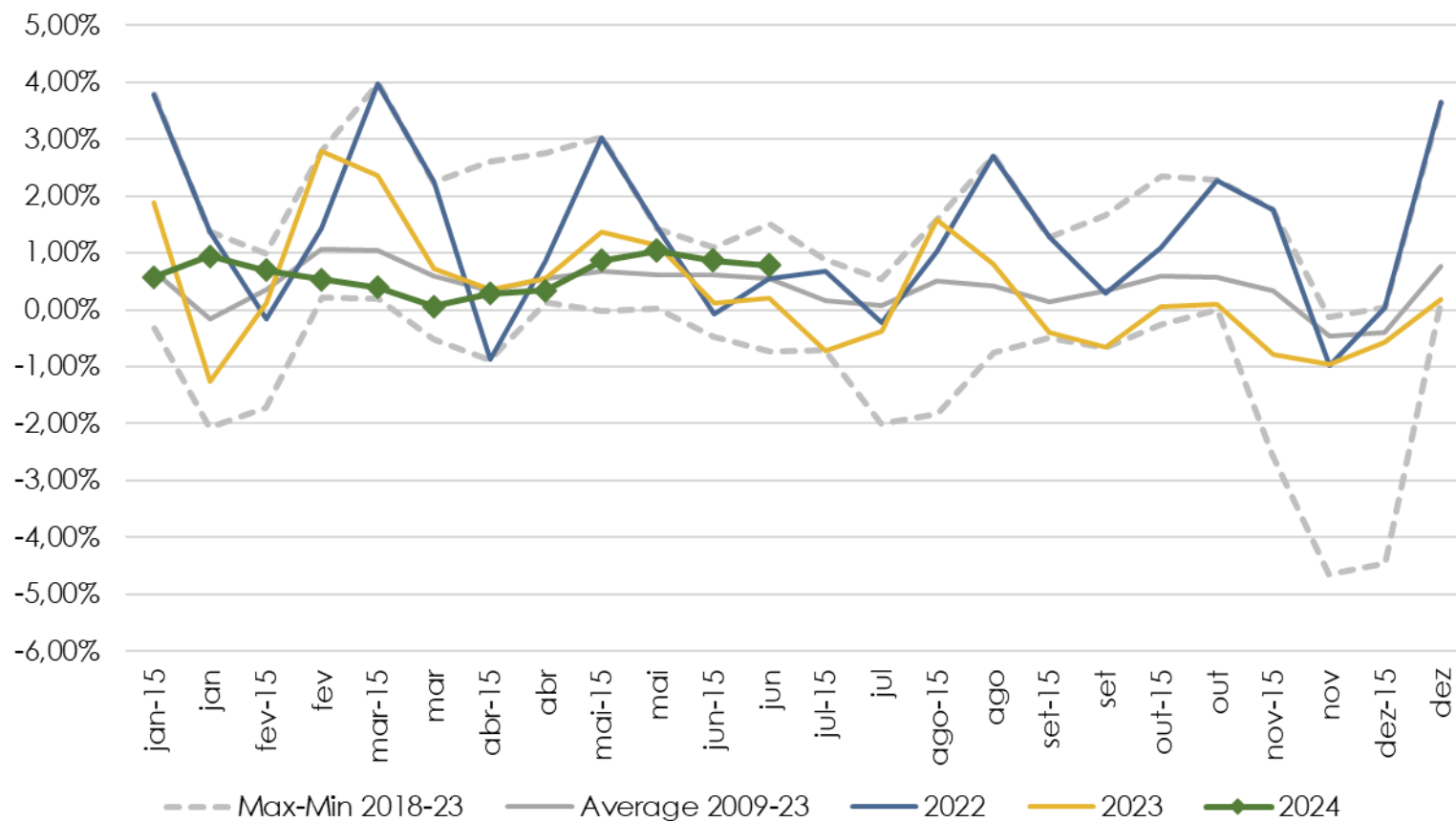
Fuels (vehicles)



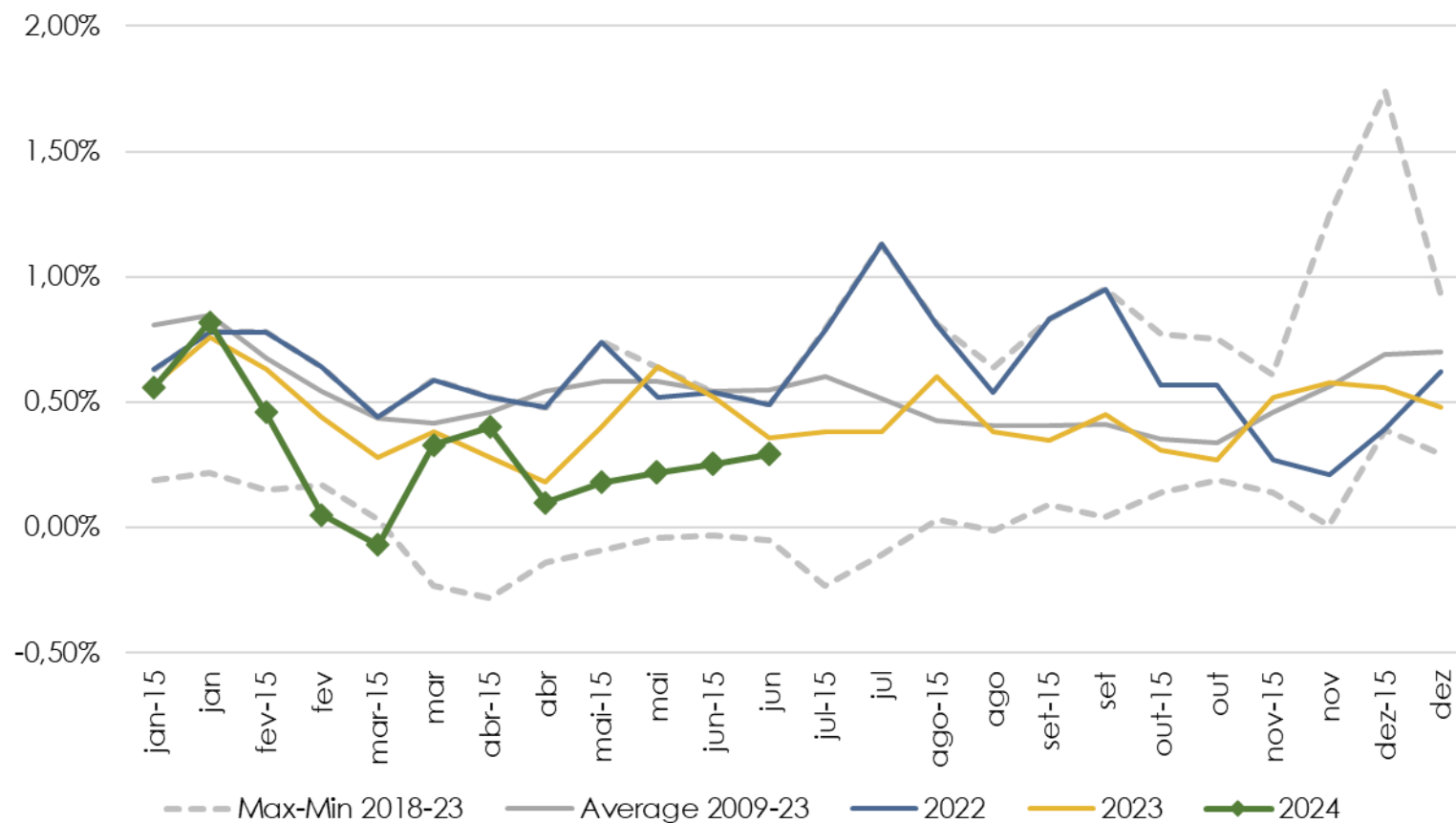
Healthcare and personal care



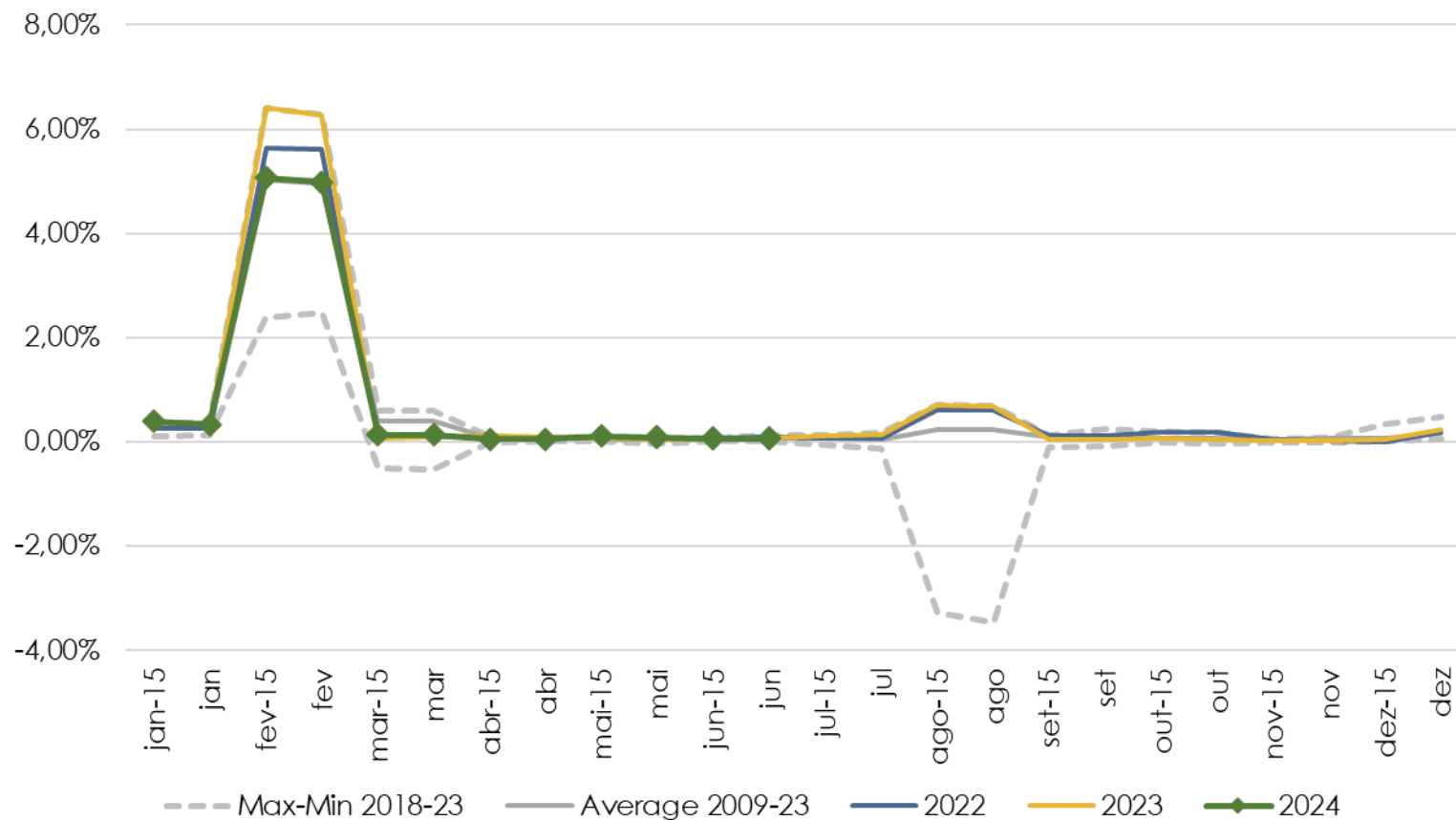
Personal care



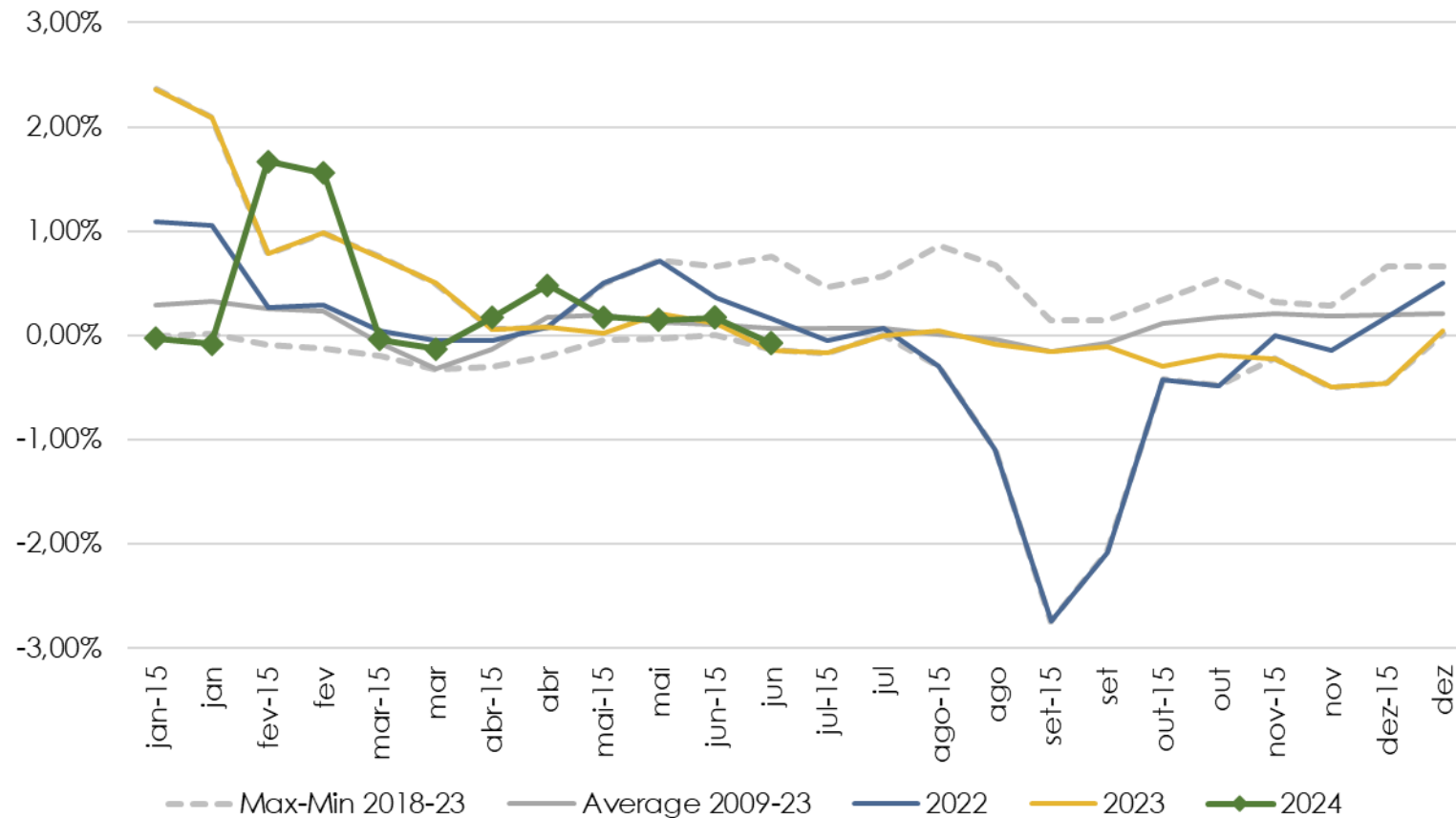
Personal expenses



Education




Communication



 **buysidebrazil**

 **buysidebrazil**

 contato@buysidebrazil.com

 +55 11 99173 0745

 www.buysidebrazil.com